

NLB 1-3-12
DIRECTIONAL

WELL LOCATION

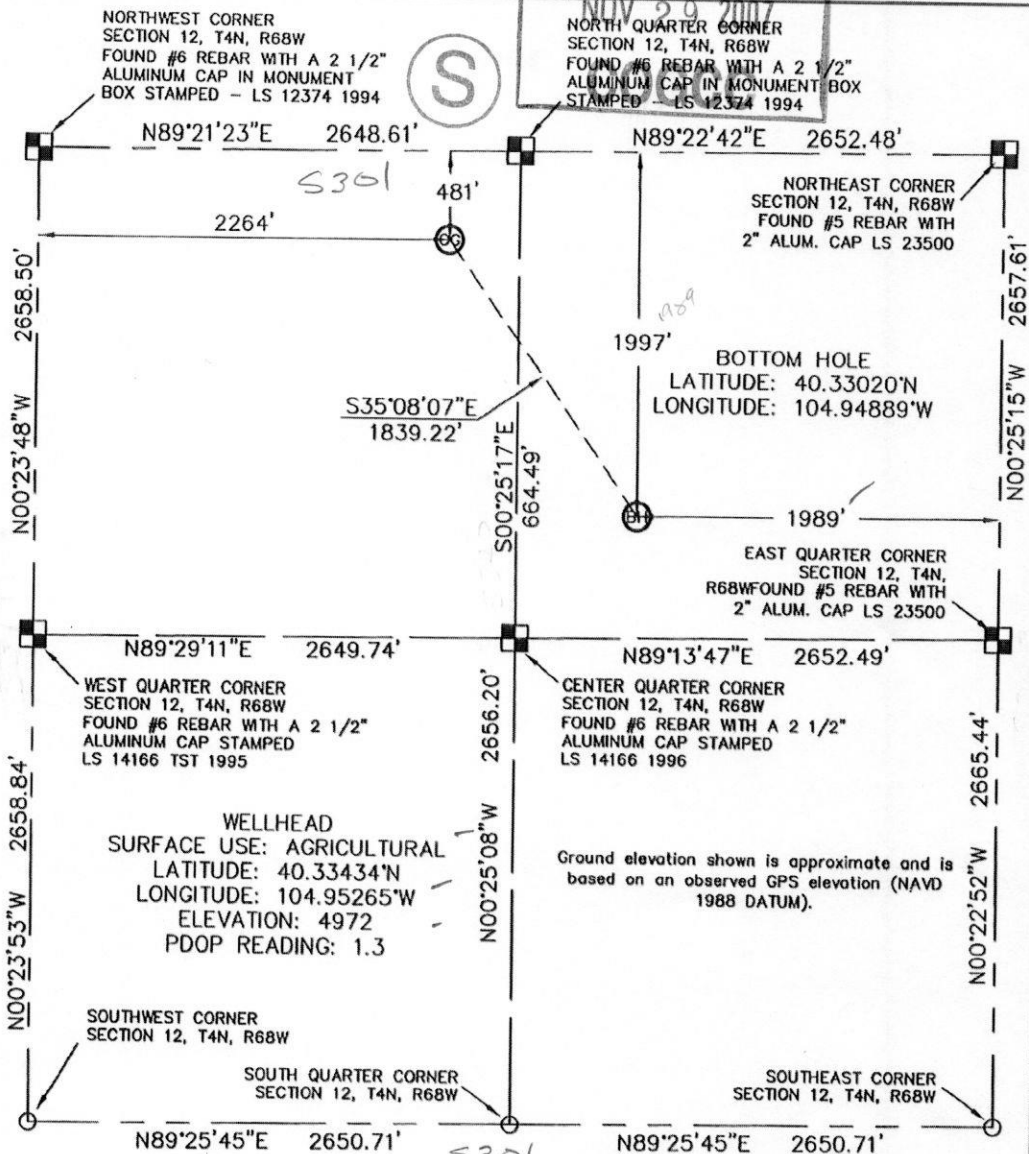
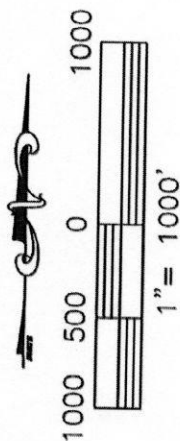
01875677

SEC. 12, T.4.N, R.68W.
WELD COUNTY, COLORADO

See **VISIBLE IMPROVEMENTS**
EXHIBIT for all visible
improvements within 400'
of wellhead.

All distances to section lines are at
right angles to said section lines.

Bearings shown are Grid Bearings of
the Colorado State Plane Coordinate
System, North Zone, North American
Datum 1983/92.



King Surveyors Inc. of Windsor, Colorado has in accordance with a request from Collin M. Richardson for Mineral Resources, Inc. determined the surface location of NLB 1-3-12 to be 481' from the North line and 2264' from the West line, and the Bottom Hole to be 1997' from the North line and 1989' from the East line of Section 12, Township 4 North, Range 68 West of the Sixth Principal Meridian, County of Weld, State of Colorado.

I, hereby certify that this plat is an accurate representation
of a correct survey showing the location of NLB 1-3-12.

Steven A Lund-On behalf of King Surveyors, Inc.
Licensed Land Surveyor No. 34995
State of Colorado

LEGEND

- = SECTION LINE
- = QUARTER SECTION LINE
- = SIXTEENTH SECTION LINE
- = FOUND ALIQUOT MONUMENT
- = CALCULATED POSITION



KING SURVEYORS, INC.

650 Garden Drive | Windsor, Colorado 80550
phone: (970) 686-5011 | fax: (970) 686-5821

www.kingsurveyors.com

PROJECT NO: 2007259

DATE: 07-27-07(11-29-07)

CLIENT: MINERAL RESOURCES, INC.

DWG: 2007259WELL_12-4-68

FIELD OPERATOR: BEN ADSIT

DATE OF WORK: 07-16-07

NLB 1-3-12
DIRECTIONAL

IMPROVEMENTS

NW1/4 SEC. 12, T.4-N, R.68W.
WELD COUNTY, COLORADO

S

SEP 11 07

COGCC

S.H. #60

S.H. #60

EXISTING
CHURCH
700'
NORTHEAST

VAIL S 12-35
103' WEST

NLB 1-3-12

G

OG

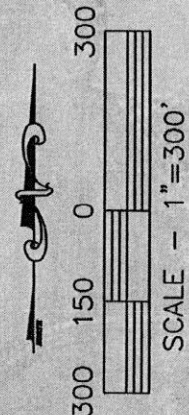
ACCESS ROAD

PROPERTY LINE
349' EAST

CONCRETE DITCH
142' SOUTH

DIRT ROAD
124' SOUTH

400' IMPROVEMENT
RADIUS



KING SURVEYORS, INC.

650 Garden Drive | Windsor, Colorado 80550
phone: (970) 686-5011 | fax: (970) 686-5821

www.kingsurveyors.com

PROJECT NO: 2007259

DATE: 07-27-07

CLIENT: MINERAL RESOURCES, INC.

DWG: 2007259WELL_12-4-68

FIELD OPERATOR: BEN ADSIT

DATE OF WORK: 07-16-07

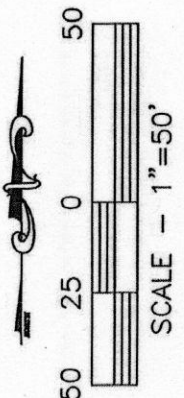
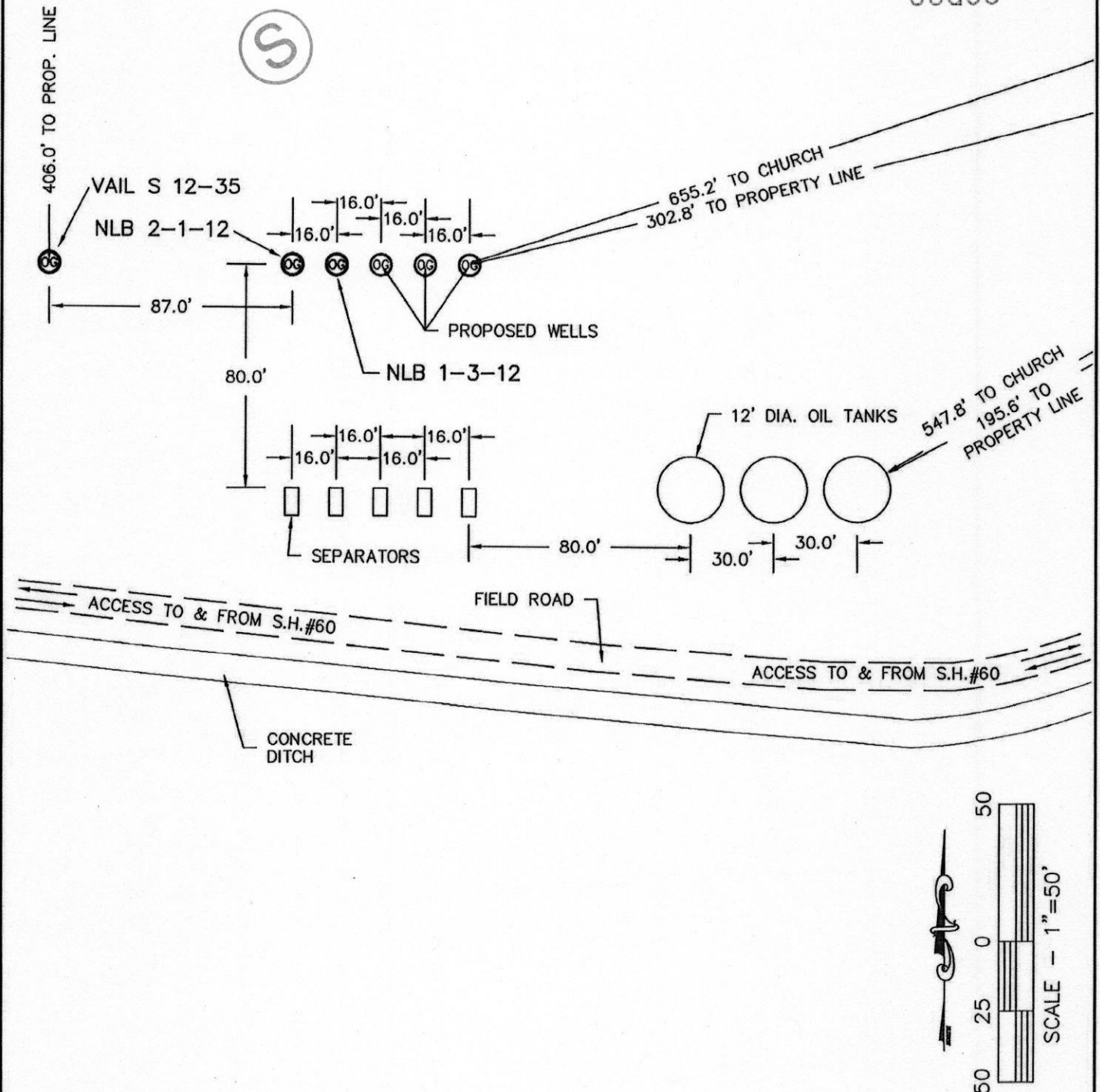
NLB 1-3-12
DIRECTIONAL

PAD SITE

NW1/4 SEC. 12, T.4.N., R.68W.
WELD COUNTY, COLORADO

SEP 11 07

COGCC



KING SURVEYORS, INC.

650 Garden Drive | Windsor, Colorado 80550
phone: (970) 686-5011 | fax: (970) 686-5821

www.kingsurveyors.com

PROJECT NO: 2007259

DATE: 07-27-07

CLIENT: MINERAL RESOURCES, INC.

DWG: 2007259WELL_12-4-68

FIELD OPERATOR: BEN ADSIT

DATE OF WORK: 07-16-07