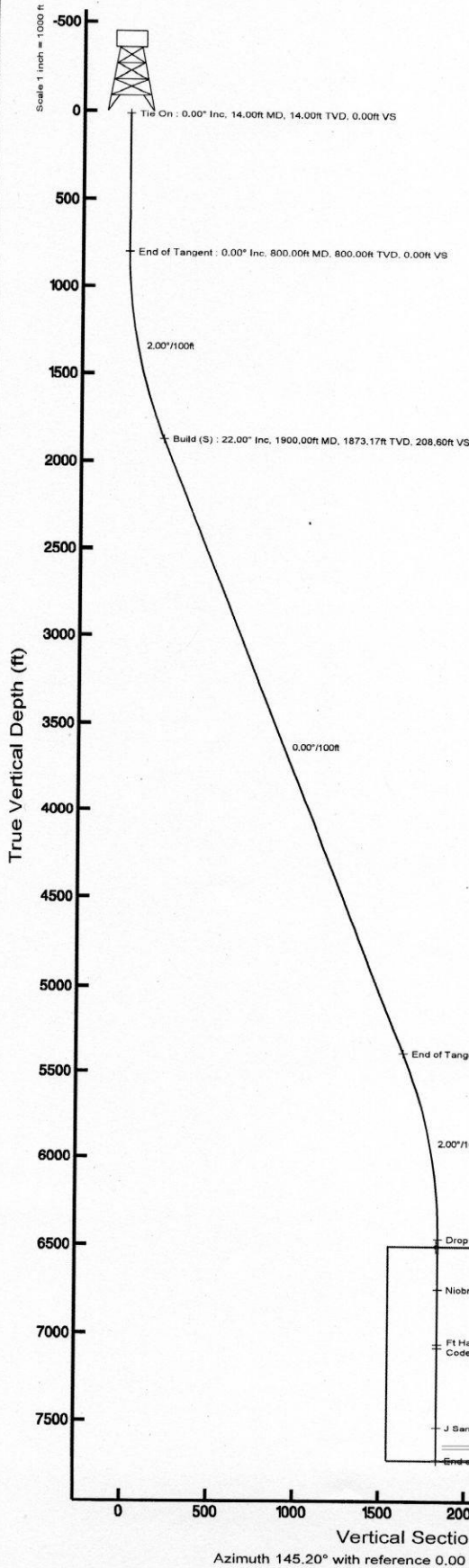
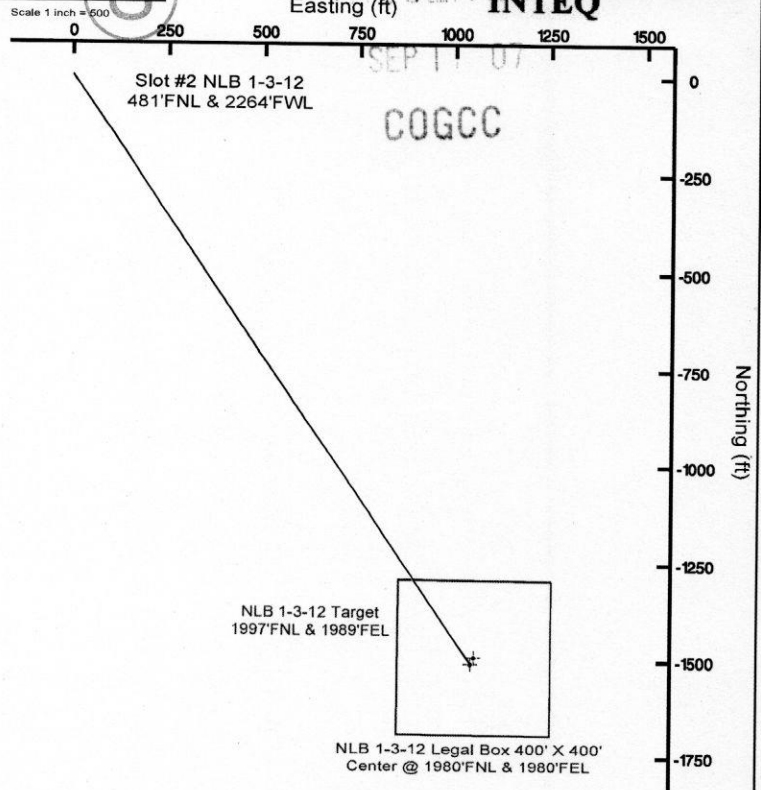


MINERAL RESOURCES, INC.

Location: COLORADO Slot: Slot #2 NLB 1-3-12 481°FNL & 2264°FVL
 Field: WELD COUNTY Well: NLB 1-3-12
 Facility: SEC.12-T4N-R68W Wellbore: NLB 1-3-12 PWB



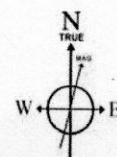
Not reference wellbore in NLB 1-3-12 PWB	
True vertical depths are referenced to Rig on Slot #2 NLB 1-3-12 481°FNL & 2264°FVL (RT)	Grid System: NAD83 / Lambert Colorado State Planes, Northern Zone (2011) US feet
Measured depths are referenced to Rig on Slot #2 NLB 1-3-12 481°FNL & 2264°FVL (RT)	North Reference: True north
Rig on Slot #2 NLB 1-3-12 481°FNL & 2264°FVL (RT) to Mean Sea Level (MSL)	Scale: True distance
Mean Sea Level to Mudline (Facility - SEC.12-T4N-R68W) 0 feet	Depth are in feet
Coordinates are in feet referenced to BMT	Created by: Suzanne Thompson on 09/20/07



Targets								
Name	MD (ft)	TVD (ft)	Local N (ft)	Local E (ft)	Grid East (USF)	Grid North (USF)	Latitude	Longitude
NLB 1-3-12 Legal Box 400' X 400' Center @ 1980°FNL & 1980°FEL	8000.00	-1491.21	1027.32	3153655.78	1363627.17	40° 19' 48.888"N	104° 58' 55.000"W	
NLB 1-3-12 Target 1997°FNL & 1989°FEL	8000.00	-1508.21	1048.32	3153646.69	1363618.11	40° 19' 48.720"N	104° 58' 56.000"W	

Well Profile Data								
Design Comment	MD (ft)	Inc (°)	Az (°)	TVD (ft)	Local N (ft)	Local E (ft)	DLS (°/100ft)	VS (ft)
Tie On	14.00	0.000	145.198	14.00	0.00	0.00	0.00	0.00
End of Tangent	800.00	0.000	145.198	800.00	0.00	0.00	0.00	0.00
Build (S)	1900.00	22.000	145.198	1873.17	-171.29	119.06	2.00	208.60
End of Tangent (S)	5689.45	22.000	145.198	5386.69	-1336.92	929.26	0.00	1626.16
Drop (S)	6789.45	0.000	145.198	6459.86	-1508.21	1048.32	2.00	1836.76
End of Tangent	8063.60	0.000	145.198	7734.00	-1508.21	1048.32	0.00	1836.76

Location Information				
Facility Name		Grid East (USF)	Grid North (USF)	Latitude
SEC.12-T4N-R68W		3152572.583	1365111.654	40° 20' 03.624"N
Slot		Local N (ft)	Local E (ft)	Longitude
Slot #2 NLB 1-3-12 481°FNL & 2264°FVL		0.00	1673	104° 57' 09.756"W
Rig on Slot #2 NLB 1-3-12 481°FNL & 2264°FVL (RT) to Mud line (Facility - SEC.12-T4N-R68W)		3152588.319	1365111.758	40° 20' 03.624"N
Mean Sea Level to Mud line (Facility - SEC.12-T4N-R68W)		4986ft		
Rig on Slot #2 NLB 1-3-12 481°FNL & 2264°FVL (RT) to Mean Sea Level		4986ft		



BGGM (1945.0 to 2009.0) Dip: 67.12° Field: 53520.7 nT
 Magnetic North is 9.49 degrees East of True North (at 07/31/07)

To correct azimuth from Magnetic to True add 9.49 degrees

Planned Wellpath Report

NLB 1-3-12 PWP

Page 1 of 4



RECEIVED

SEP 11 07 INTEQ

REFERENCE WELLPATH IDENTIFICATION			
Operator	MINERAL RESOURCES, INC.	Slot	Slot #2 NLB 1-3-12 481'FNL & 2264'FWL
Area	COLORADO	Well	NLB 1-3-12
Field	WELD COUNTY	Wellbore	NLB 1-3-12 PWB
Facility	SEC.12-T4N-R68W		

REPORT SETUP INFORMATION			
Projection System	NAD83 / Lambert Colorado State Planes, Northern Zone (501), US feet	Software System	WellArchitect™ 1.2
North Reference	True	User	Suzanne Thompson
Scale	0.999958	Report Generated	08/02/07 at 14:39:36
Wellbore last revised	07/31/07	Database/Source file	WA_Denver/NLB_1-3

WELLPATH LOCATION						
	Local coordinates		Grid coordinates		Geographic coordinates	
	North [feet]	East [feet]	Easting [US feet]	Northing [US feet]	Latitude [°]	Longitude [°]
Slot Location	0.00	16.73	3152589.32	1365111.76	40 20 03.624N	104 57 09.540W
Facility Reference Pt			3152572.59	1365111.65	40 20 03.624N	104 57 09.756W
Field Reference Pt			3225988.33	1384979.75	40 23 14.400N	104 41 19.400W

WELLPATH DATUM			
Calculation method	Minimum curvature	Rig on Slot #2 NLB 1-3-12 481'FNL & 2264'FWL (RT) to Facility Vertical Datum	4986.00 feet
Horizontal Reference Pt	Slot	Rig on Slot #2 NLB 1-3-12 481'FNL & 2264'FWL (RT) to Mean Sea Level	4986.00 feet
Vertical Reference Pt	Rig on Slot #2 NLB 1-3-12 481'FNL & 2264'FWL (RT)	Facility Vertical Datum to Mud Line (Facility)	0.00 feet
MD Reference Pt	Rig on Slot #2 NLB 1-3-12 481'FNL & 2264'FWL (RT)	Section Origin	N 0.00, E 0.00
Field Vertical Reference	Mean Sea Level	Section Azimuth	145.20°

Planned Wellpath Report

NLB 1-3-12 PWP

Page 2 of 4

RECEIVED



SEP 11 07 INTEQ

REFERENCE WELLPATH IDENTIFICATION

Operator	MINERAL RESOURCES, INC.	Slot	Slot #2 NLB 1-3-12 481'FNL & 2264'FWL
Area	COLORADO	Well	NLB 1-3-12
Field	WELD COUNTY	Wellbore	NLB 1-3-12 PWB
Facility	SEC.12-T4N-R68W		

WELLPATH DATA (87 stations) † = interpolated/extrapolated station

MD [feet]	Inclination [°]	Azimuth [°]	TVD [feet]	Vert Sect [feet]	North [feet]	East [feet]	DLS [°/100ft]
0.00†	0.000	145.198	0.00	0.00	0.00	0.00	0.00
14.00	0.000	145.198	14.00	0.00	0.00	0.00	0.00
114.00†	0.000	0.000	114.00	0.00	0.00	0.00	0.00
214.00†	0.000	0.000	214.00	0.00	0.00	0.00	0.00
314.00†	0.000	0.000	314.00	0.00	0.00	0.00	0.00
414.00†	0.000	0.000	414.00	0.00	0.00	0.00	0.00
514.00†	0.000	0.000	514.00	0.00	0.00	0.00	0.00
614.00†	0.000	0.000	614.00	0.00	0.00	0.00	0.00
714.00†	0.000	0.000	714.00	0.00	0.00	0.00	0.00
800.00	0.000	145.198	800.00	0.00	0.00	0.00	0.00
814.00†	0.280	145.198	814.00	0.03	-0.03	0.02	2.00
914.00†	2.280	145.198	913.97	2.27	-1.86	1.29	2.00
1014.00†	4.280	145.198	1013.80	7.99	-6.56	4.56	2.00
1114.00†	6.280	145.198	1113.37	17.19	-14.12	9.81	2.00
1214.00†	8.280	145.198	1212.56	29.86	-24.52	17.04	2.00
1314.00†	10.280	145.198	1311.25	45.99	-37.76	26.25	2.00
1414.00†	12.280	145.198	1409.31	65.55	-53.82	37.41	2.00
1514.00†	14.280	145.198	1506.63	88.52	-72.68	50.52	2.00
1614.00†	16.280	145.198	1603.09	114.87	-94.32	65.56	2.00
1714.00†	18.280	145.198	1698.57	144.57	-118.71	82.51	2.00
1814.00†	20.280	145.198	1792.96	177.59	-145.82	101.36	2.00
1900.00	22.000	145.198	1873.17	208.60	-171.29	119.06	2.00
1914.00†	22.000	145.198	1886.15	213.85	-175.60	122.05	0.00
2014.00†	22.000	145.198	1978.87	251.31	-206.36	143.43	0.00
2114.00†	22.000	145.198	2071.59	288.77	-237.12	164.81	0.00
2214.00†	22.000	145.198	2164.30	326.23	-267.88	186.19	0.00
2314.00†	22.000	145.198	2257.02	363.69	-298.64	207.57	0.00
2414.00†	22.000	145.198	2349.74	401.15	-329.40	228.96	0.00
2514.00†	22.000	145.198	2442.46	438.61	-360.16	250.34	0.00
2614.00†	22.000	145.198	2535.18	476.07	-390.92	271.72	0.00
2714.00†	22.000	145.198	2627.90	513.53	-421.68	293.10	0.00
2814.00†	22.000	145.198	2720.61	550.99	-452.44	314.48	0.00
2914.00†	22.000	145.198	2813.33	588.45	-483.20	335.86	0.00
3014.00†	22.000	145.198	2906.05	625.91	-513.96	357.24	0.00
3114.00†	22.000	145.198	2998.77	663.38	-544.72	378.62	0.00
3214.00†	22.000	145.198	3091.49	700.84	-575.48	400.00	0.00
3314.00†	22.000	145.198	3184.21	738.30	-606.23	421.38	0.00
3414.00†	22.000	145.198	3276.93	775.76	-636.99	442.76	0.00
3514.00†	22.000	145.198	3369.64	813.22	-667.75	464.14	0.00
3614.00†	22.000	145.198	3462.36	850.68	-698.51	485.52	0.00

Planned Wellpath Report

NLB 1-3-12 PWP

Page 3 of 4

RECEIVED



SEP 11 INTEQ

REFERENCE WELLPATH IDENTIFICATION

Operator	MINERAL RESOURCES, INC.	Slot	Slot #2 NLB 1-3-12 481'FNL & 2264'FWL
Area	COLORADO	Well	NLB 1-3-12
Field	WELD COUNTY	Wellbore	NLB 1-3-12 PWB
Facility	SEC.12-T4N-R68W		

WELLPATH DATA (87 stations) † = interpolated/extrapolated station

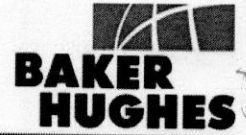
MD [feet]	Inclination [°]	Azimuth [°]	TVD [feet]	Vert Sect [feet]	North [feet]	East [feet]	DLS [%/100ft]
3714.00†	22.000	145.198	3555.08	888.14	-729.27	506.90	0.00
3814.00†	22.000	145.198	3647.80	925.60	-760.03	528.28	0.00
3914.00†	22.000	145.198	3740.52	963.06	-790.79	549.66	0.00
4014.00†	22.000	145.198	3833.24	1000.52	-821.55	571.04	0.00
4114.00†	22.000	145.198	3925.95	1037.98	-852.31	592.42	0.00
4214.00†	22.000	145.198	4018.67	1075.44	-883.07	613.80	0.00
4314.00†	22.000	145.198	4111.39	1112.90	-913.83	635.19	0.00
4414.00†	22.000	145.198	4204.11	1150.36	-944.59	656.57	0.00
4514.00†	22.000	145.198	4296.83	1187.82	-975.35	677.95	0.00
4614.00†	22.000	145.198	4389.55	1225.29	-1006.11	699.33	0.00
4714.00†	22.000	145.198	4482.26	1262.75	-1036.87	720.71	0.00
4814.00†	22.000	145.198	4574.98	1300.21	-1067.63	742.09	0.00
4914.00†	22.000	145.198	4667.70	1337.67	-1098.39	763.47	0.00
5014.00†	22.000	145.198	4760.42	1375.13	-1129.15	784.85	0.00
5114.00†	22.000	145.198	4853.14	1412.59	-1159.91	806.23	0.00
5214.00†	22.000	145.198	4945.86	1450.05	-1190.67	827.61	0.00
5314.00†	22.000	145.198	5038.57	1487.51	-1221.43	848.99	0.00
5414.00†	22.000	145.198	5131.29	1524.97	-1252.19	870.37	0.00
5514.00†	22.000	145.198	5224.01	1562.43	-1282.95	891.75	0.00
5614.00†	22.000	145.198	5316.73	1599.89	-1313.71	913.13	0.00
5689.45	22.000	145.198	5386.69	1628.16	-1336.92	929.26	0.00
5714.00†	21.509	145.198	5409.49	1637.25	-1344.39	934.46	2.00
5814.00†	19.509	145.198	5503.14	1672.29	-1373.16	954.45	2.00
5914.00†	17.509	145.198	5597.97	1704.03	-1399.23	972.57	2.00
6014.00†	15.509	145.198	5693.84	1732.45	-1422.56	988.79	2.00
6114.00†	13.509	145.198	5790.65	1757.50	-1443.13	1003.09	2.00
6214.00†	11.509	145.198	5888.27	1779.16	-1460.91	1015.45	2.00
6314.00†	9.509	145.198	5986.58	1797.40	-1475.89	1025.86	2.00
6414.00†	7.509	145.198	6085.48	1812.19	-1488.04	1034.30	2.00
6514.00†	5.509	145.198	6184.83	1823.53	-1497.35	1040.77	2.00
6614.00†	3.509	145.198	6284.51	1831.39	-1503.80	1045.26	2.00
6714.00†	1.509	145.198	6384.41	1835.77	-1507.40	1047.76	2.00
6789.45	0.000	145.198	6459.86 ¹	1836.76	-1508.21	1048.32	2.00
6814.00†	0.000	0.000	6484.40	1836.76	-1508.21	1048.32	0.00
6914.00†	0.000	0.000	6584.40	1836.76	-1508.21	1048.32	0.00
7014.00†	0.000	0.000	6684.40	1836.76	-1508.21	1048.32	0.00
7114.00†	0.000	0.000	6784.40	1836.76	-1508.21	1048.32	0.00
7214.00†	0.000	0.000	6884.40	1836.76	-1508.21	1048.32	0.00
7314.00†	0.000	0.000	6984.40	1836.76	-1508.21	1048.32	0.00
7414.00†	0.000	0.000	7084.40	1836.76	-1508.21	1048.32	0.00

Planned Wellpath Report

NLB 1-3-12 PWP

Page 4 of 4

RECEIVED



SEP 11 07 INTEQ

REFERENCE WELLPATH IDENTIFICATION

Operator	MINERAL RESOURCES, INC.	Slot	Slot #2 NLB 1-3-12 481'FNL & 2264'FWL
Area	COLORADO	Well	NLB 1-3-12
Field	WELD COUNTY	Wellbore	NLB 1-3-12 PWB
Facility	SEC.12-T4N-R68W		

WELLPATH DATA (87 stations) † = interpolated/extrapolated station

MD [feet]	Inclination [°]	Azimuth [°]	TVD [feet]	Vert Sect [feet]	North [feet]	East [feet]	DLS [°/100ft]
7514.00†	0.000	0.000	7184.40	1836.76	-1508.21	1048.32	0.00
7614.00†	0.000	0.000	7284.40	1836.76	-1508.21	1048.32	0.00
7714.00†	0.000	0.000	7384.40	1836.76	-1508.21	1048.32	0.00
7814.00†	0.000	0.000	7484.40	1836.76	-1508.21	1048.32	0.00
7914.00†	0.000	0.000	7584.40	1836.76	-1508.21	1048.32	0.00
8014.00†	0.000	0.000	7684.40	1836.76	-1508.21	1048.32	0.00
8063.60	0.000	145.198	7734.00	1836.76	-1508.21	1048.32	0.00

TARGETS

Name	MD [feet]	TVD [feet]	North [feet]	East [feet]	Grid East [us survey feet]	Grid North [us survey feet]	Latitude [°]	Longitude [°]	Shape
NLB 1-3-12 Legal Box 400' X 400' Center @ 1980'FNL & 1980'FEL		6500.00	-1491.21	1057.32	3153655.78	1363627.17	40 19 48.888N	104 56 55.888W	square
1) NLB 1-3-12 Target 1997'FNL & 1989'FEL		6500.00	-1508.21	1048.32	3153646.89	1363610.11	40 19 48.720N	104 56 56.004W	point

SURVEY PROGRAM Ref Wellbore: NLB 1-3-12 PWB Ref Wellpath: NLB 1-3-12 PWP

Start MD [feet]	End MD [feet]	Positional Uncertainty Model	Log Name/Comment	Wellbore
14.00	8063.60	MTC (Collar, pre-2000) (Standard)		NLB 1-3-12 PWB

WELLPATH COMMENTS

MD [feet]	Inclination [degrees]	Azimuth [degrees]	TVD [feet]	Comment
7069.60	0.000	145.198	6740.00	Niobrara
7386.60	0.000	145.198	7057.00	Ft Hays
7405.60	0.000	145.198	7076.00	Codell
7863.60	0.000	145.198	7534.00	J Sand