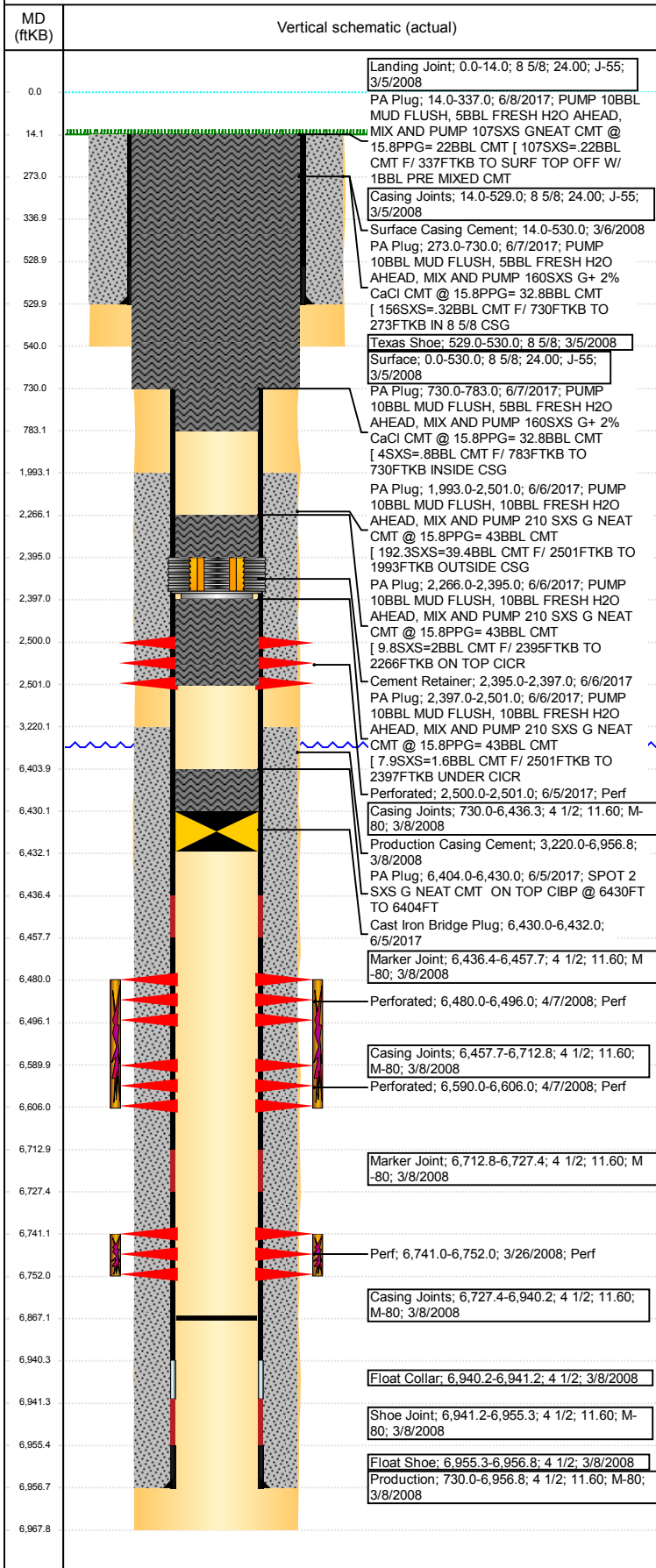


**Well Name: HARVEY USX AC25-12**

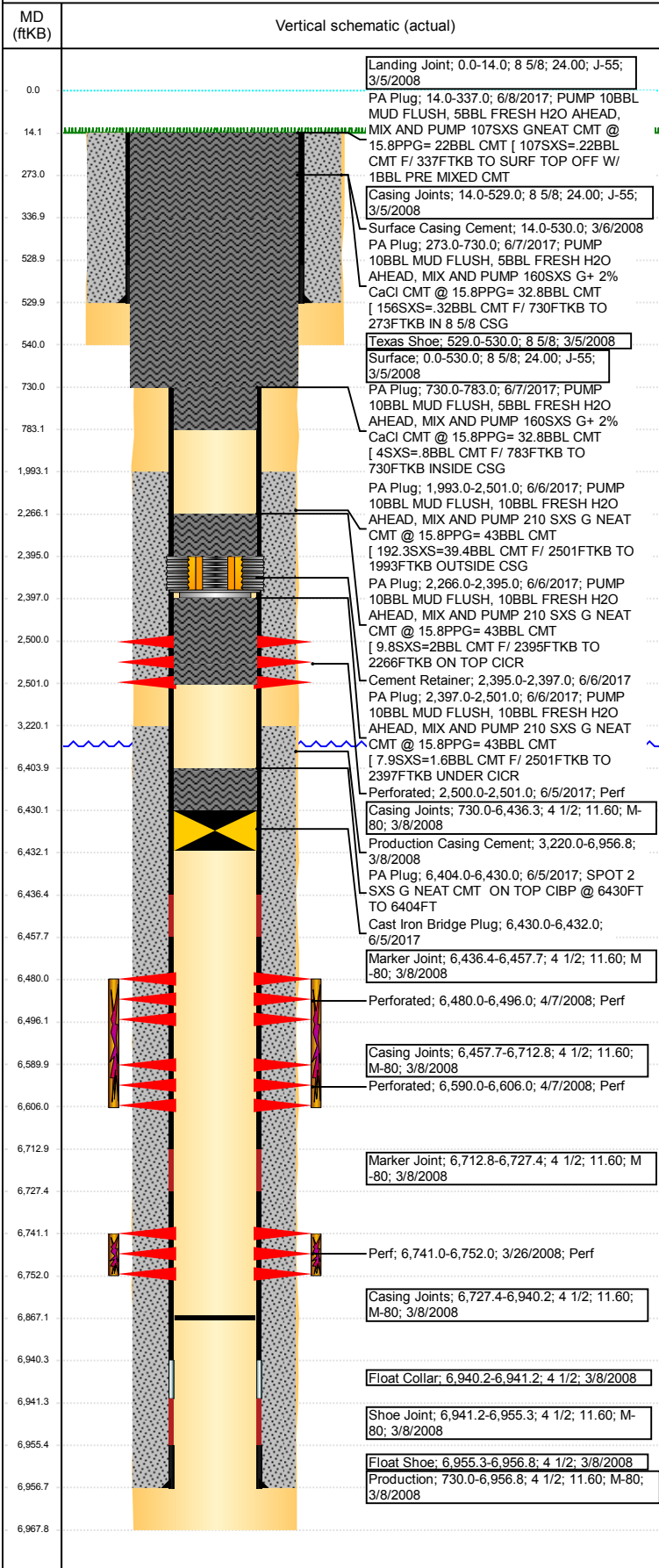
VERTICAL - ORIGINAL HOLE, 6/28/2017 8:40:40 AM



Well Header							
API 05-123-26102	Business Unit DJ BASIN	District 15	Well Config VERTICAL				
Original KB Elevation (ft) 4,752	KB - GL / MSL (ftKB) 14.00	Spud Date 3/5/2008	P & A Date 6/8/2017				
Comment Ground elevation changed per Paul Majors per plat revision 6/8/07.							
Directions To Well HWY 392 & CR 71, NORTH .3 MILES, EAST INTO. ANCHORS SET & PULL TESTED 4/22/2009. 5/4/2009, INSTALLED RE-CONDITION 7/8" RODS, **REQUIRES SPECIFIC ROD WRENCHES.**							
Congressional Location							
Quarter 3 NW	Quarter 4 SW	Section 25	Township 7	Twntshp N/S Dir N	Range 63		
Bottom Hole Location							
North-South Distance (ft)		From N or S Line		East-West Distance (ft)			
				From E or W Line			
Plug Back Total Depths							
Date	Depth (ftKB)	Method	Com				
3/8/2008	6,941.2	CASING TALLY					
4/14/2008	6,901.0	TUBING TALLY	CHASED CIFP TO 6901'				
5/1/2009	6,867.0	TAG	TAGGED USING TBG TALLY.				
Wellbore Sections							
Section Des	Size (in)	Act Top, MD (ftKB)	Act Btm, MD (ftKB)				
SURFACE	12 1/4	14	540				
PRODUCTION	7 7/8	540	6,968				
Zone Statuses							
Zone Name	Status Date	Status	Fluid Type	Job	Prod Method		
CODELL	5/9/2008	PR		DRILLING/CO...			
CODELL	6/5/2017	P&A		ABANDON WE...			
NIOBRARA	5/9/2008	PR		DRILLING/CO...			
NIOBRARA	6/5/2017	P&A		ABANDON WE...			
Casing Strings							
Csg Des	Run Date	OD (in)	Wt/Len (lb/ft)	Grade	Top, MD (ftKB)	MD (ftKB)	
Surface	3/5/2008	8 5/8	24.00	J-55	0.0	530.0	
Production	3/8/2008	4 1/2	11.60	M-80	0.0	6,956.8	
Cement							
Description	Top Depth (ftKB)	Bottom Depth (ftKB)					
Surface Casing Cement	14.0	530.0					
Production Casing Cement	3,220.0	6,956.8					
PA Plug	6,404.0	6,430.0					
PA Plug	2,266.0	2,395.0					
PA Plug	2,397.0	2,501.0					
PA Plug	1,993.0	2,501.0					
PA Plug	730.0	730.0					
PA Plug	273.0	730.0					
PA Plug	14.0	337.0					
Tubing Strings							
Tubing Description	Run Date	String...	ID (in)	Wt (lb/ft)	Grade	Len (ft)	Set De...
Tubing - Production	5/1/2009	2 3/8	2.00	4.70	J-55	6,824.21	
Other In Hole							
Run Date	Des	OD (in)	Top (ftKB)	Btm (ftKB)			
6/5/2017	Cast Iron Bridge Plug	3.99	6,430.0	6,432.0			
6/6/2017	Cement Retainer	3.99	2,395.0	2,397.0			
Logs							
Date	Type	Top, MD (ftKB)	Btm, MD (ftKB)				
3/8/2008	Caliper/Comp. Density/Neutron/GR/SP/ML	2,800.0	6,941.0				
3/8/2008	DIL/GR/SP/Caliper	2,800.0	6,941.0				
3/18/2008	CBL/CCL/GR	3,150.0	6,907.0				
3/21/2008	CBL/CCL/GR	3,000.0	6,908.0				

**Well Name: HARVEY USX AC25-12**

VERTICAL - ORIGINAL HOLE, 6/28/2017 8:40:41 AM



Logs			
Date	Type	Top, MD (ftKB)	Btm, MD (ftKB)
3/25/2008	CBL/CCL/GR	3,000.0	6,908.0
6/1/2017	GYRO	14.0	6,795.0

Perforation Data					
Linked Zone	Bnch/St g	Sum of Entered Shot Total	Top (ftKB)	Btm (ftKB)	Date
NIOBARRA, ORIGINAL HOLE	A	64	6,480.00	6,496.00	4/7/2008
NIOBARRA, ORIGINAL HOLE	B	64	6,590.00	6,606.00	4/7/2008
CODELL, ORIGINAL HOLE		44	6,741.00	6,752.00	3/26/2008
<b>Total (Sum)</b>		<b>178</b>			

Stimulation Intervals		
Start Date	Primary Job Type	
4/7/2008	DRILLING/COMPLETION - ORIGINAL	
Technical Result	Tech Result Details	Tech Result Note
Success	According to Plan	

Comment		
FRAC THE CODELL - NO PROBLEMS TO REPORT		
Start Date	Primary Job Type	
4/7/2008	DRILLING/COMPLETION - ORIGINAL	
Technical Result	Tech Result Details	Tech Result Note
Success	According to Plan	

Comment		
FRAC THE NIOBARRA - NO PROBLEMS TO REPORT		