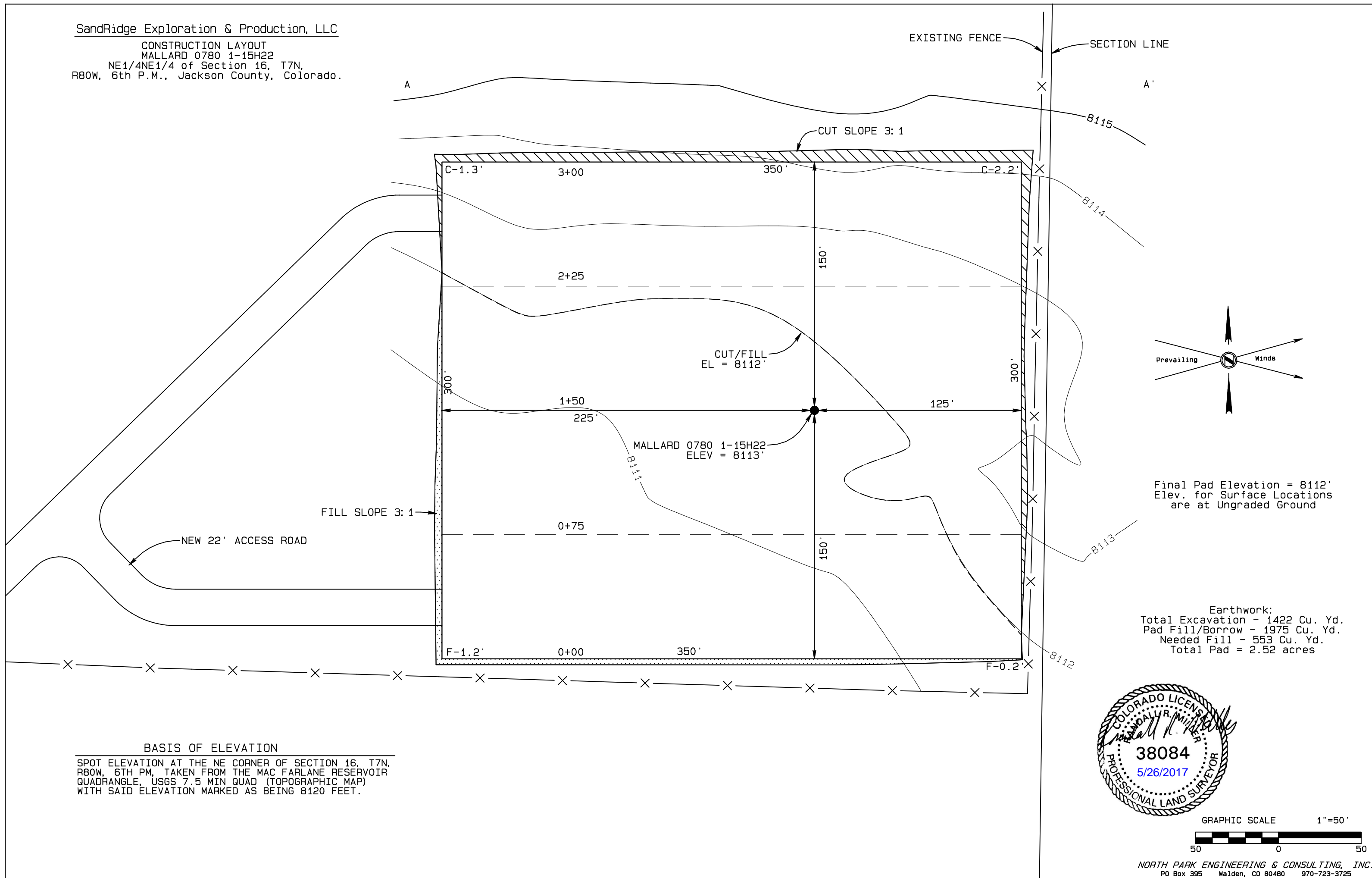


SandRidge Exploration & Production, LLC
CONSTRUCTION LAYOUT
MALLARD 0780 1-15H22
NE1/4NE1/4 of Section 16, T7N,
R80W, 6th P.M., Jackson County, Colorado.



SandRidge Exploration & Production, LLC
CONSTRUCTION LAYOUT CROSS SECTION
MALLARD 0780 1-15H22
NE1/4NE1/4 of Section 16, T7N,
R80W, 6th P.M., Jackson County, Colorado.

A

A'

C-1.3'

C-2.2'

F-0.2'

C-1.0'

F-1.0'

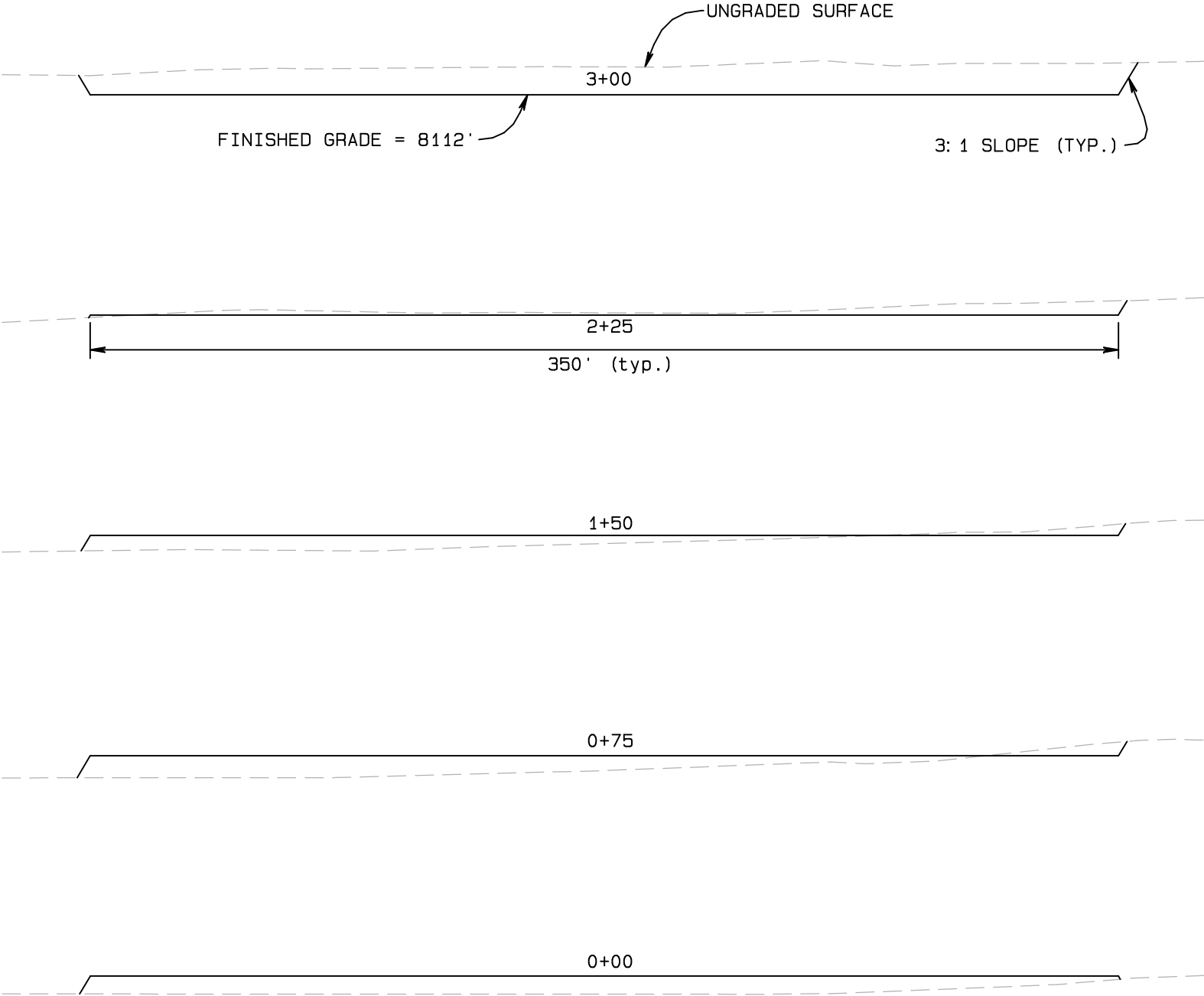
C-0.8'

F-1.5'

F-1.0'

F-1.2'

F-0.2'



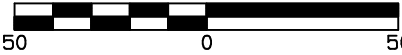
BASIS OF ELEVATION

SPOT ELEVATION AT THE NE CORNER OF SECTION 16, T7N,
R80W, 6TH PM, TAKEN FROM THE MAC FARLANE RESERVOIR
QUADRANGLE, USGS 7.5 MIN QUAD (TOPOGRAPHIC MAP)
WITH SAID ELEVATION MARKED AS BEING 8120 FEET.



Vertical Exageration = 5 Times

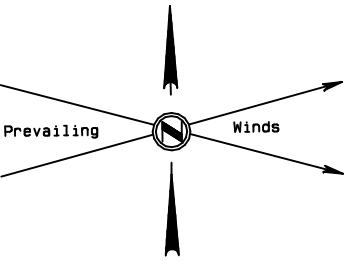
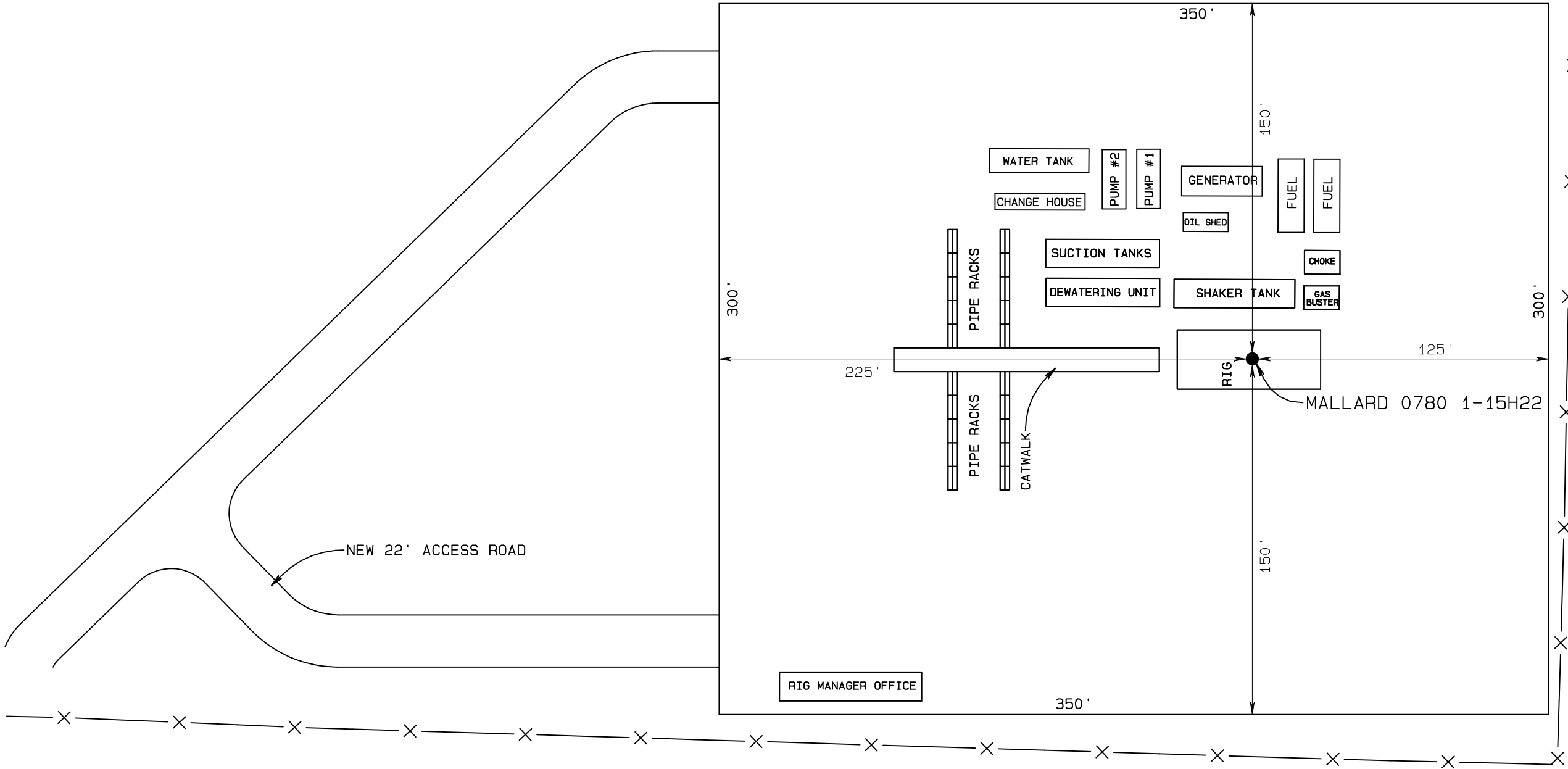
GRAPHIC SCALE 1"=50'



NORTH PARK ENGINEERING & CONSULTING, INC.
PO Box 395 Walden, CO 80480 970-723-3725

SandRidge Exploration & Production, LLC
TYPICAL RIG LAYOUT
MALLARD 0780 1-15H22
NE1/4NE1/4 of Section 16, T7N,
R80W, 6th P.M., Jackson County, Colorado.

EXISTING FENCE
RAY RANCH
SECTION LINE
USFWS



Final Pad Elevation = 8112'

SandRidge Exploration & Production, LLC

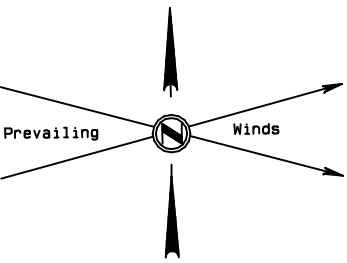
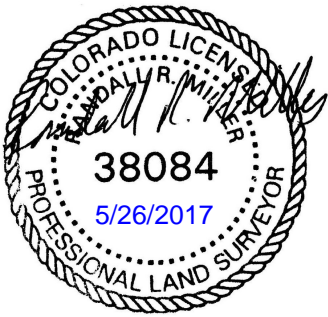
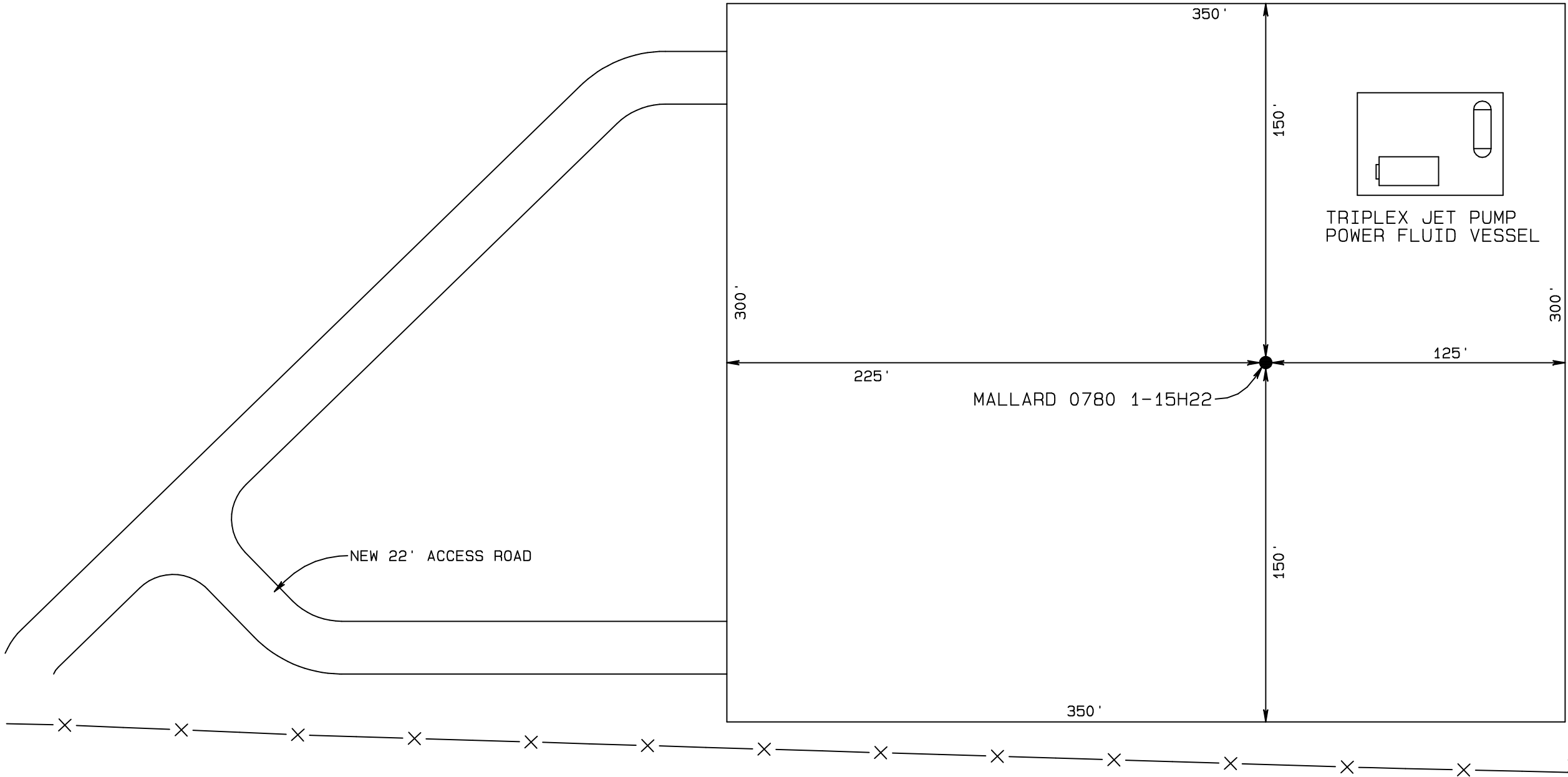
PRODUCTION PAD LAYOUT
MALLARD 0780 1-15H22
NE1/4NE1/4 of Section 16, T7N,
R80W, 6th P.M., Jackson County, Colorado.

EXISTING FENCE

SECTION LINE

RAY RANCH

USFWS



Final Pad Elevation = 8112'