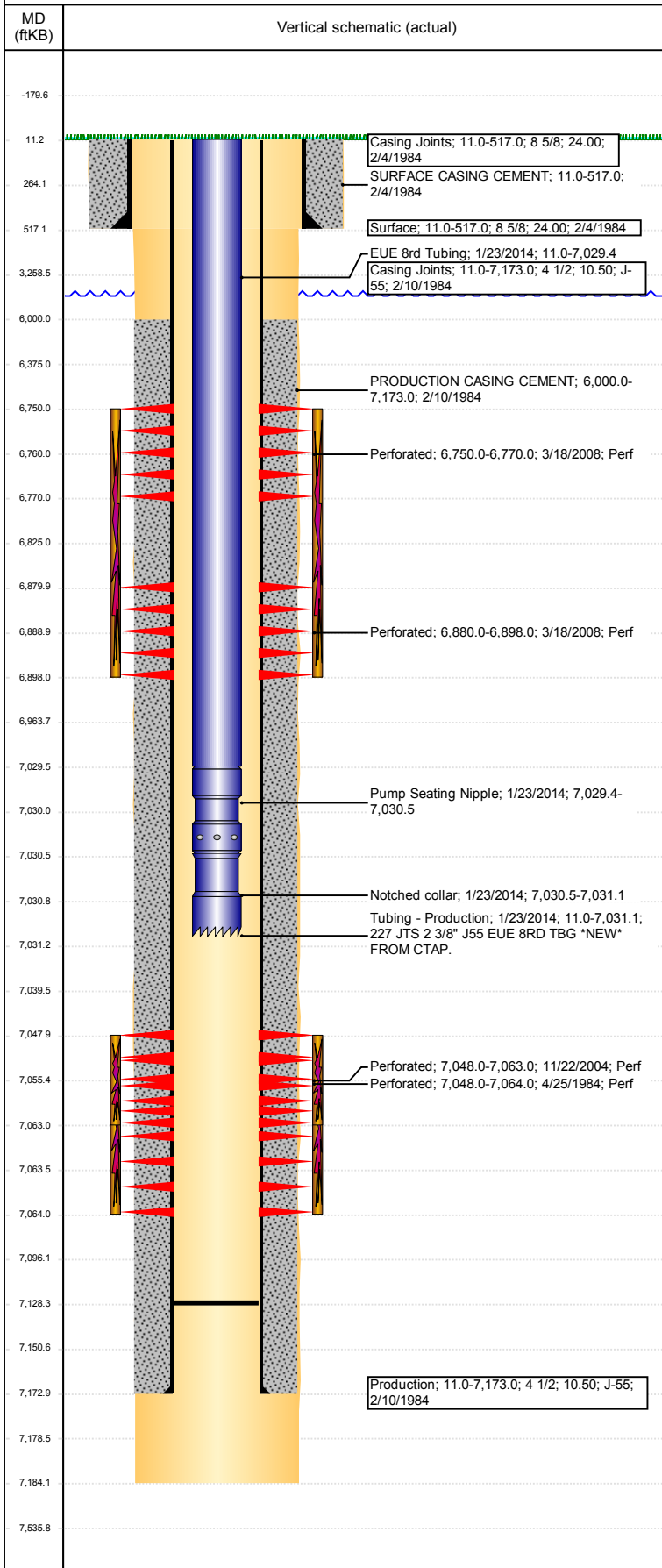


# Wellbore Schematic Input Report

**Well Name: IKENOUYE 01**

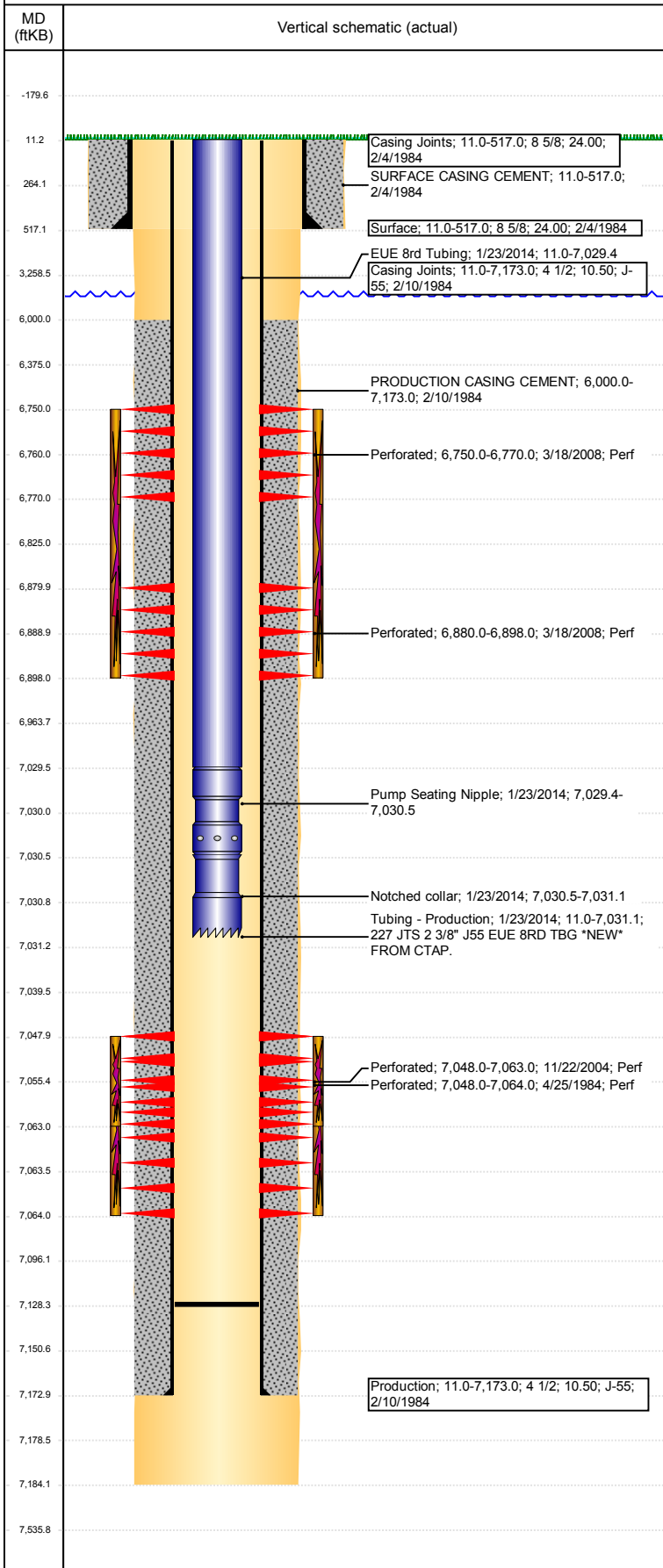
VERTICAL - ORIGINAL HOLE, 6/28/2017 9:16:21 AM



Well Header							
API 05-123-11621	Business Unit DJ BASIN		District 15	Well Config VERTICAL			
Original KB Elevation (ft) 4,656	KB - GL / MSL (ftKB) 11.00		Spud Date 2/3/1984		P & A Date		
Comment GL ON LOGS INCORRECT							
Directions To Well WCR 52 & 41, WEST 2/10, NORTH ACROSS BRIDGE, NE INTO							
Congressional Location							
Quarter 3 SE	Quarter 4 SE	Section 29	Township 5	Twntshp N/S Dir N	Range 65	Range E/W Dir W	
Bottom Hole Location							
North-South Distance (ft)		From N or S Line		East-West Distance (ft)		From E or W Line	
Plug Back Total Depths							
Date	Depth (ftKB)	Method		Com			
2/8/1984	7,173.0	CASING TALLY		TOP OF FC			
2/14/1984	7,124.0	CASED HOLE LOG		CBL DEPTH LOG			
1/22/2014	7,128.1	TAG		TAG W/ 224 JTS. 15.00' OUT ON 224			
Wellbore Sections							
Section Des		Size (in)		Act Top, MD (ftKB)		Act Btm, MD (ftKB)	
SURFACE		12 1/4		11		517	
PRODUCTION		7 7/8		517		7,184	
Zone Statuses							
Zone Name	Status Date	Status	Fluid Type	Job	Prod Method		
CODELL	5/15/1984	PR	Gas	DRILLING/CO...	Flowing		
CODELL	12/17/2004	PR		RE-FRAC, 11/2...			
CODELL	3/14/2008	SI		RECOMPLETI...			
CODELL	3/28/2008	PR		RECOMPLETI...			
CODELL	1/6/2010	PR					
CODELL	3/10/2017	SI					
NIOBRARA	3/28/2008	PR		RECOMPLETI...	Flowing		
NIOBRARA	1/6/2010	PR					
NIOBRARA	3/10/2017	SI					
Casing Strings							
Csg Des	Run Date	OD (in)	Wt/Len (lb/ft)	Grade	Top, MD (ftKB)	MD (ftKB)	
Surface	2/4/1984	8 5/8	24.00		11.0	517.0	
Production	2/10/1984	4 1/2	10.50	J-55	11.0	7,173.0	
Cement							
Description				Top Depth (ftKB)		Bottom Depth (ftKB)	
SURFACE CASING CEMENT				11.0		517.0	
Description				Top Depth (ftKB)		Bottom Depth (ftKB)	
PRODUCTION CASING CEMENT				6,000.0		7,173.0	
Tubing Strings							
Tubing Description	Run Date	String...	ID (in)	Wt (lb/ft)	Grade	Len (ft)	Set De...
Tubing - Production	1/23/2014	2 3/8	2.00	4.70	J-55	7,020.09	
Tubing Components							
Item Des	OD (in)	Wt (lb/ft)	Grade	Jts	Len (ft)	Btm (ftKB)	Btm (TVD) (ftKB)
EUE 8rd Tubing	2 3/8	4.70	J-55	227	7,018.39	7,029.4	
Pump Seating Nipple	2 3/8	1.10		1	1.10	7,030.5	
Notched collar	2 3/8			1	0.60	7,031.1	
Other In Hole							
Run Date	Des			OD (in)	Top (ftKB)	Btm (ftKB)	
Logs							
Date	Type				Top, MD (ftKB)	Btm, MD (ftKB)	
2/8/1984	Gamma Ray				4,220.0	7,182.0	
2/8/1984	Induction				517.0	7,176.0	
2/14/1984	Cement Bond				5,830.0	7,118.0	
Perforation Data							
Linked Zone	Bnch/St g	Sum of Entered Shot Total	Top (ftKB)	Btm (ftKB)	Date		
NIOBRARA, ORIGINAL HOLE	A	80	6,750.00	6,770.00	3/18/2008		

**Well Name: IKENOUYE 01**

VERTICAL - ORIGINAL HOLE, 6/28/2017 9:16:22 AM



Perforation Data					
Linked Zone	Bnch/St g	Sum of Entered Shot Total	Top (ftKB)	Btm (ftKB)	Date
NIOBRARA, ORIGINAL HOLE	B	72	6,880.00	6,898.00	3/18/2008
CODELL, ORIGINAL HOLE		17	7,048.00	7,064.00	4/25/1984
CODELL, ORIGINAL HOLE		60	7,048.00	7,063.00	11/22/2004
Total (Sum)		229			
Stimulation Intervals					
Start Date 4/26/1984		Primary Job Type DRILLING/COMPLETION - ORIGINAL			
Technical Result		Tech Result Details		Tech Result Note	
Comment					
Start Date 12/6/2004		Primary Job Type RE-FRAC			
Technical Result		Tech Result Details		Tech Result Note	
Comment					
Start Date 3/26/2008		Primary Job Type RECOMPLETION			
Technical Result Success		Tech Result Details According to Plan		Tech Result Note	
Comment SD WITH ACID AT TOP PERF = 2698 PSI. ANNULAR INCREASING WITH PROBABLE COLLAR LEAK. CONTINUE WITH SLICKWATER PAD. SURFACE CASING = 120 PSI. SLICKWATER PAD. PRE-ISIP (@ 243 BBL) = 3002 PSI, 5-MIN = 2595 PSI. INCREASED FR TO 1.5 GPT. STARTED 0.25 PPG SAND SLUG AT THE 420 BBL MARK FOR 100 BBLs (1050 LBS) TO HELP WITH COLLAR LEAK. ISIP = 3204 PSI, 5-MIN = 3060 PSI. TURN ON IN 42 MINUTES ON A 20/64 CHOKE WITH 2600 PSI.					