



CRESTONE PEAK
RESOURCES

Neighbors 24-12

API: 05-123-21791

Plugging and Abandonment Procedure

06/27/2017

Engineer: Matt Cook
Workover Coordinator: Mark Balderston
Production Manager: Emily Miller
VP Operations: John Schmidt

Attachments:

Attachment 1 – Current Wellbore Diagram
Attachment 2 – Proposed Wellbore Diagram

Objective:

Set CIBP above J Sand perms. Set CIBP above Perfs and dump cement to cover Codell & Niobrara. Pump internal cement plug across Sussex/Shannon. Circulate cement from 1600’ to surface for Upper Pierre & Fox Hills coverage & fill casing to surface.

Safety & Environmental

- Before work begins a pre-job safety meeting MUST be held. Discuss all aspects of the procedure with any involved personnel and address any safety concerns before the job begins.
- If a service company shows up during operations for a job, a safety meeting MUST be held with all service company personnel prior to the start of their portion of the work. Wellsite supervisor must notify contractors as to known hazards of which the contractors may be unaware and must ensure that all workers are aware of their responsibilities and duties under the EH&S guidelines.
- Ensure all automation equipment has been removed before MIRU.
- All safety meetings will be recorded on the Crestone Peak Daily Completions Report in Wellview.
- Ensure any necessary One-calls are in place.
- Before beginning operations, wellsite supervisor must ensure adequate containment and liners are in place under all tanks and vessels.
- Ensure all water that is used is recorded in the Daily Completions Report in Wellview

Regulatory

- Notify community relations to inform them of the start of the workover.
 - Bridget Ford, Community Relations Advisor – (710) 876-3155
- All verbal notifications and approval from government regulatory agencies will be recorded on the Crestone Daily Completions Report. The name of the individual contacted and the subject matter of approval or notification will be recorded.

Additional Info

- | | |
|--|---|
| • Reason for work? | Sensitive area P&A. |
| • Casing to be pulled? | NO |
| • Fish in hole? | NO |
| • Does wellbore have un-cemented casing leaks? | NO – plan to have cement coverage across squeeze holes. |

P&A Procedure

1. Ensure all notifications, regulatory, safety & environmental requirements listed on Page 2 have been met and recorded in the Crestone Peak Daily Completions Report in Wellview.
2. Submit electronic Form 42 to COGCC 48 hours prior to performing Form 17 Bradenhead Test.
3. Confirm with Aaron McDonald the Form 17 Bradenhead test and sampling for gas, water, and oil per COGCC regulations have been completed.
4. Submit electronic Form 42 to COGCC 48 hours prior to rig MIRU.
5. RU Slick line, pull plunger and bumper spring.
6. MIRU pulling unit and use Brine to kill well.
7. ND wellhead, NU BOP.
8. Un-land, RIH and Tag with tubing. POOH with tubing.
9. RIH with bit & scraper and tag PBTD.
10. RIH with tubing and set CIBP #1 @ 7900' (64' above J-Sand Top Perf).
11. PU tubing and dump 15 sxs (~3 bbls, 200') cement on top of plug.

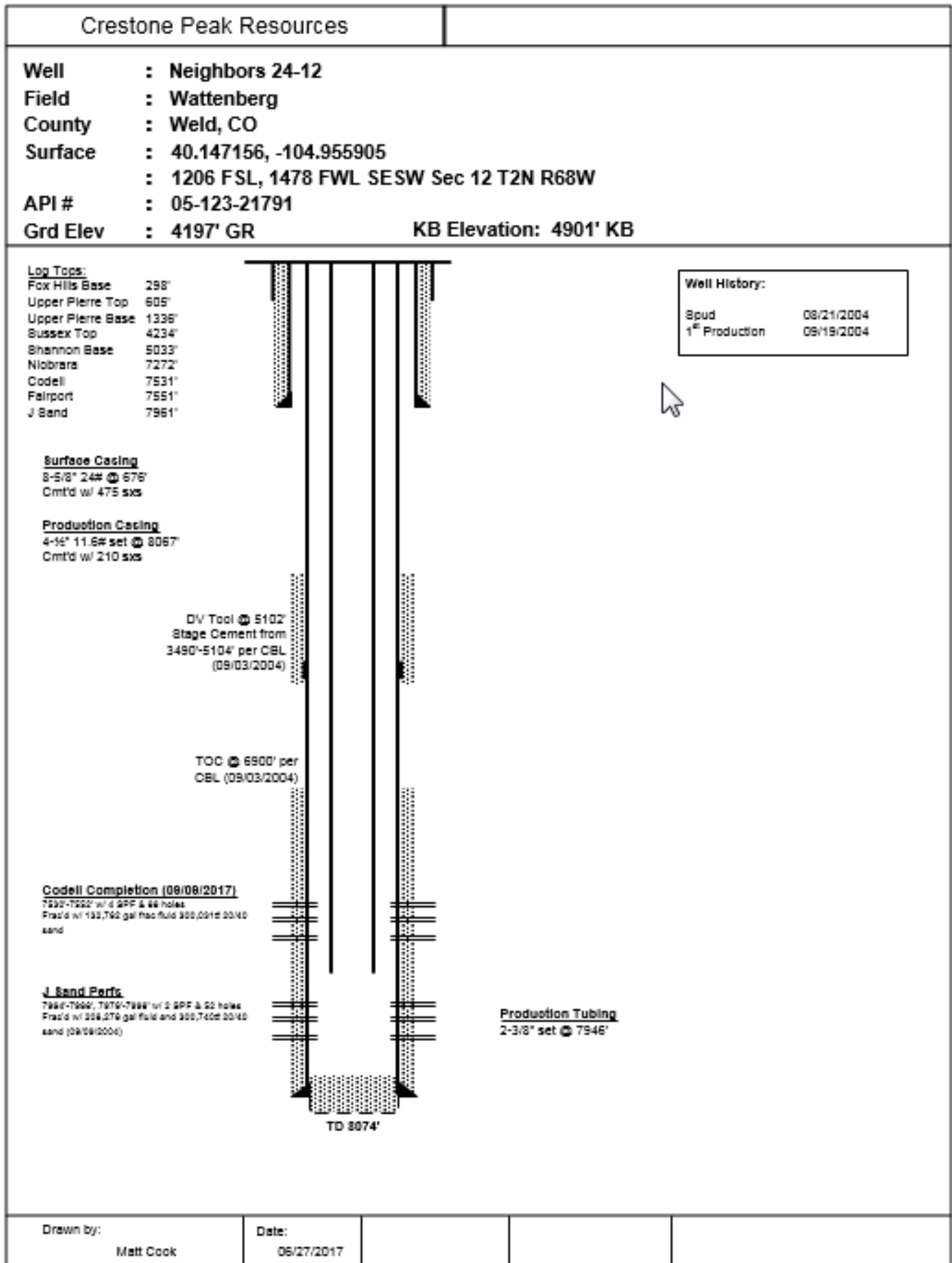
NOTE: Stand back tubing. Do not spend the time laying the tubing back while POOH to avoid cement setting around tubing.

12. RIH with tubing and set CIBP #2 @ 7450' (80' above Codell Top Perf).
13. PU tubing and dump 34 sxs (~7 bbls, 450') cement on top of plug.
14. PU tubing and reverse circulate to clean, POOH with tubing.
15. RIH with tubing and set CIBP #3 @ 5300'.
16. PU tubing and dump 96 sxs (~21 bbls, 1300') cement on top of plug.
17. PU tubing and reverse circulate to clean, POOH with tubing.
18. RIH with wireline and set CIBP #4 @ 1610'.
19. RIH with wireline and shoot squeeze holes @ 1600'.
20. RIH with wireline and set CICR #1 @ 1590'. POOH.
21. RIH with tubing and stinger, sting into CICR and establish circulation spotting 339 sxs (~72 bbls, 1600') cement through perforations until cement returns are seen at surface.
22. Stink out of CICR, circulate clean, and POOH.
23. RIH with wireline to run conventional CBL from 1590' to surface. Send CBL to production engineer (matthew.cook@crestonepr.com) to confirm no changes need to be made to the procedure.
24. RIH with tubing and spot 118 sxs (~25 bbls, 1590') cement on CICR to surface.

25. POOH with tubing, top off displaced cement volume.
26. WOC 4 hours, topping off both casing if necessary.
27. ND BOP, RDMO pulling unit.
28. Notify Environmental Department for surface review and inspection.
29. Cut off casing 4' below ground level & Weld on metal plate with dry hole marker.
30. Notify Integrity Department to properly abandon flowlines as per Rule 1103. File electronic Form 42 once abandonment is complete.
31. Restore surface location.
32. Ensure all cement tickets are emailed to the Denver office for subsequent reporting. Emails shall be sent to Production Engineer, Workover Coordinator, and Production Technician.

End Procedure

Attachment #1 – Current Wellbore Diagram



Attachment #2 – Proposed Wellbore Diagram

