

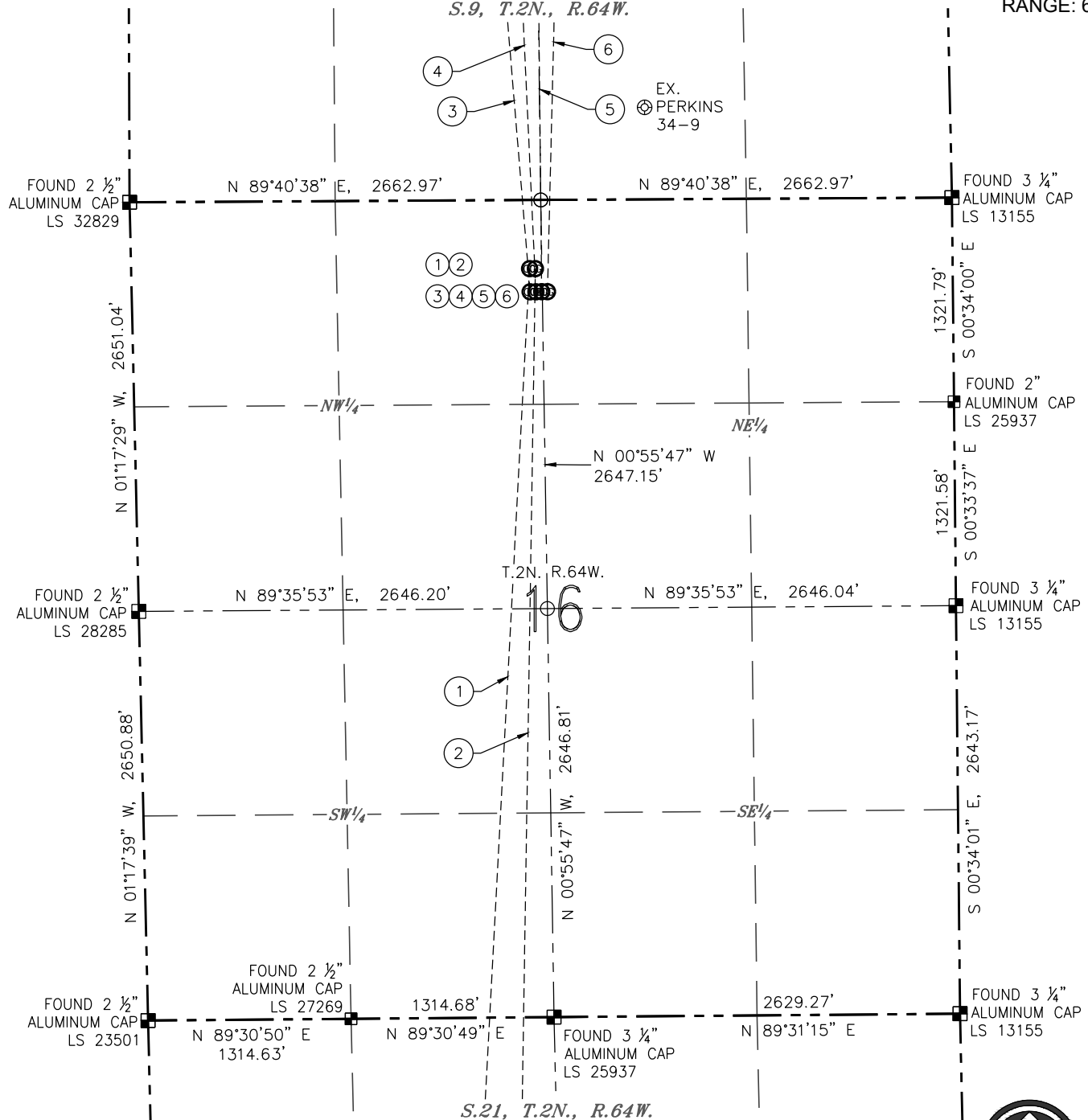
MULTI-WELL PLAN

Y16-28 PAD

(SHEET 1 OF 5)

S.9, T.2N., R.64W.

SECTION: 16
TOWNSHIP: 2N
RANGE: 64W



NOTES:

1. HORIZONTAL DATUM IS NAD 83.
2. VERTICAL DATUM IS NAVD 88.








0 1000'

SCALE: 1" = 1000'

- BOTTOM HOLE DATA -							- BORE PATH -
NO.	WELL NAME	FOOTAGES		LATITUDE	LONGITUDE	S-T-R	BEARING, DISTANCE
1	HULLABALOO STATE Y21-763	100' FSL	1810' FWL	N 40.11699°	W 104.55908°	21-2-64	S 03°03'08" W, 10058.60'
2	HULLABALOO STATE Y21-756	100' FSL	2225' FWL	N 40.11699°	W 104.55760°	21-2-64	S 00°54'06" W, 10041.80'
3	RUBICON STATE Y16-763	465' FNL	1750' FWL	N 40.17332°	W 104.55953°	4-2-64	N 04°45'15" W, 10662.37'
4	RUBICON STATE Y16-757	465' FNL	2175' FWL	N 40.17333°	W 104.55801°	4-2-64	N 02°40'19" W, 10643.70'
5	RUBICON STATE Y16-751	465' FNL	2600' FWL	N 40.17334°	W 104.55649°	4-2-64	N 00°35'08" W, 10639.10'
6	RUBICON STATE Y16-744	465' FNL	2255' FEL	N 40.17334°	W 104.55504°	4-2-64	N 01°24'00" E, 10647.78'

LEGEND

-  PROPOSED WELL
 EXISTING WELL
 BOTTOM HOLE
 FOUND MONUMENT
 CALCULATED POSITION

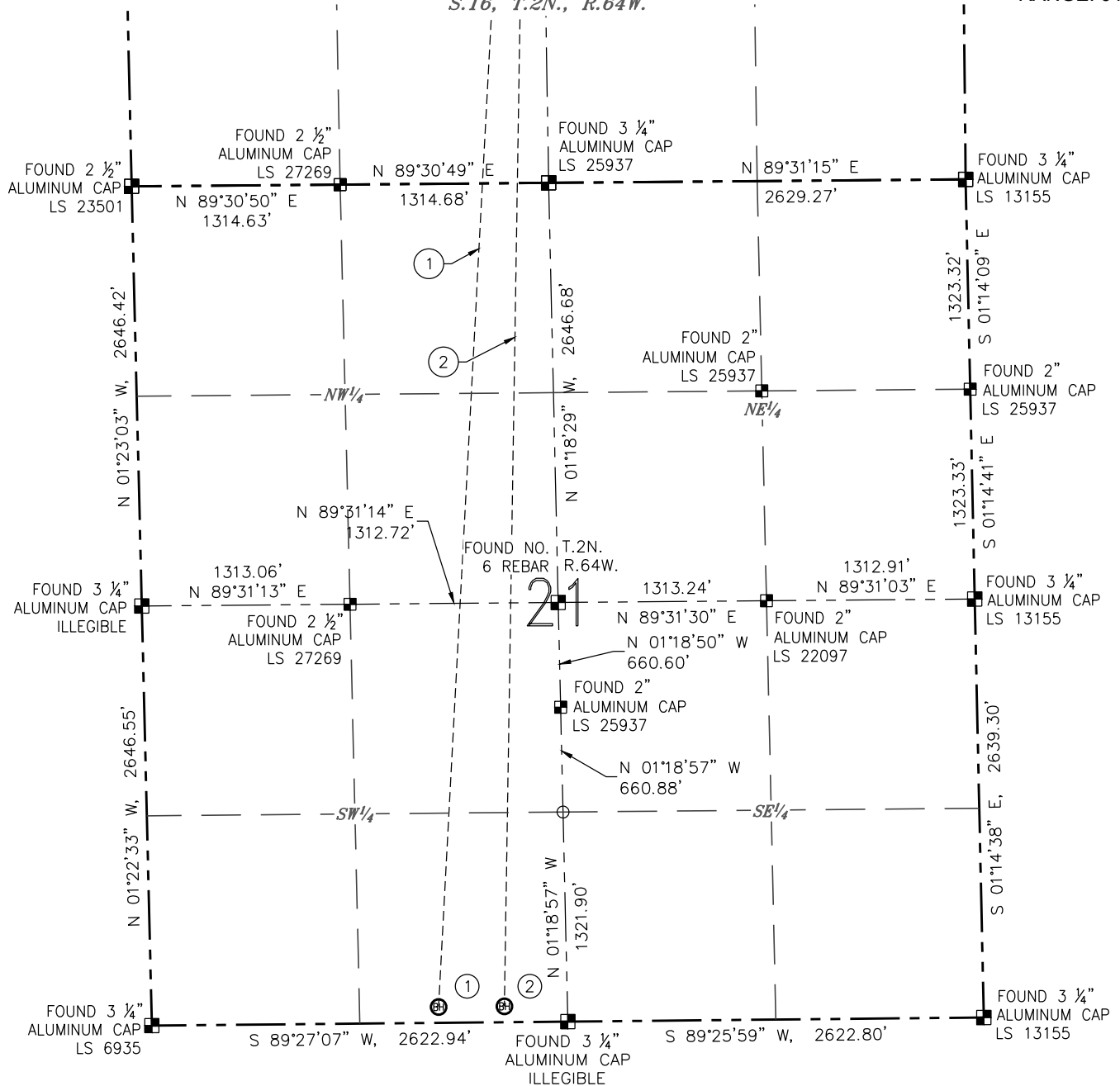
DATE: 03/16/2017
JOB #: NE16301

MULTI-WELL PLAN

Y16-28 PAD
(SHEET 2 OF 5)

S.16, T.2N., R.64W.

SECTION: 16
TOWNSHIP: 2N
RANGE: 64W



NOTES:

1. HORIZONTAL DATUM IS NAD 83.
2. VERTICAL DATUM IS NAVD 88.



0 1000'
SCALE: 1" = 1000'

LEGEND

- ⊗ PROPOSED WELL
- ⊙ EXISTING WELL
- ⊕ BOTTOM HOLE
- FOUND MONUMENT
- CALCULATED POSITION

DATE: 03/16/2017
JOB #: NE16301

- BOTTOM HOLE DATA -

NO.	WELL NAME	FOOTAGES	LATITUDE	LONGITUDE	S-T-R	BEARING, DISTANCE
1	HULLABALOO STATE Y21-763	100' FSL 1810' FWL	N 40.11699°	W 104.55908°	21-2-64	S 03°03'08" W, 10058.60'
2	HULLABALOO STATE Y21-756	100' FSL 2225' FWL	N 40.11699°	W 104.55760°	21-2-64	S 00°54'06" W, 10041.80'
3	RUBICON STATE Y16-763	465' FNL 1750' FWL	N 40.17332°	W 104.55953°	4-2-64	N 04°45'15" W, 10662.37'
4	RUBICON STATE Y16-757	465' FNL 2175' FWL	N 40.17333°	W 104.55801°	4-2-64	N 02°40'19" W, 10643.70'
5	RUBICON STATE Y16-751	465' FNL 2600' FWL	N 40.17334°	W 104.55649°	4-2-64	N 00°35'08" W, 10639.10'
6	RUBICON STATE Y16-744	465' FNL 2255' FEL	N 40.17334°	W 104.55504°	4-2-64	N 01°24'00" E, 10647.78'

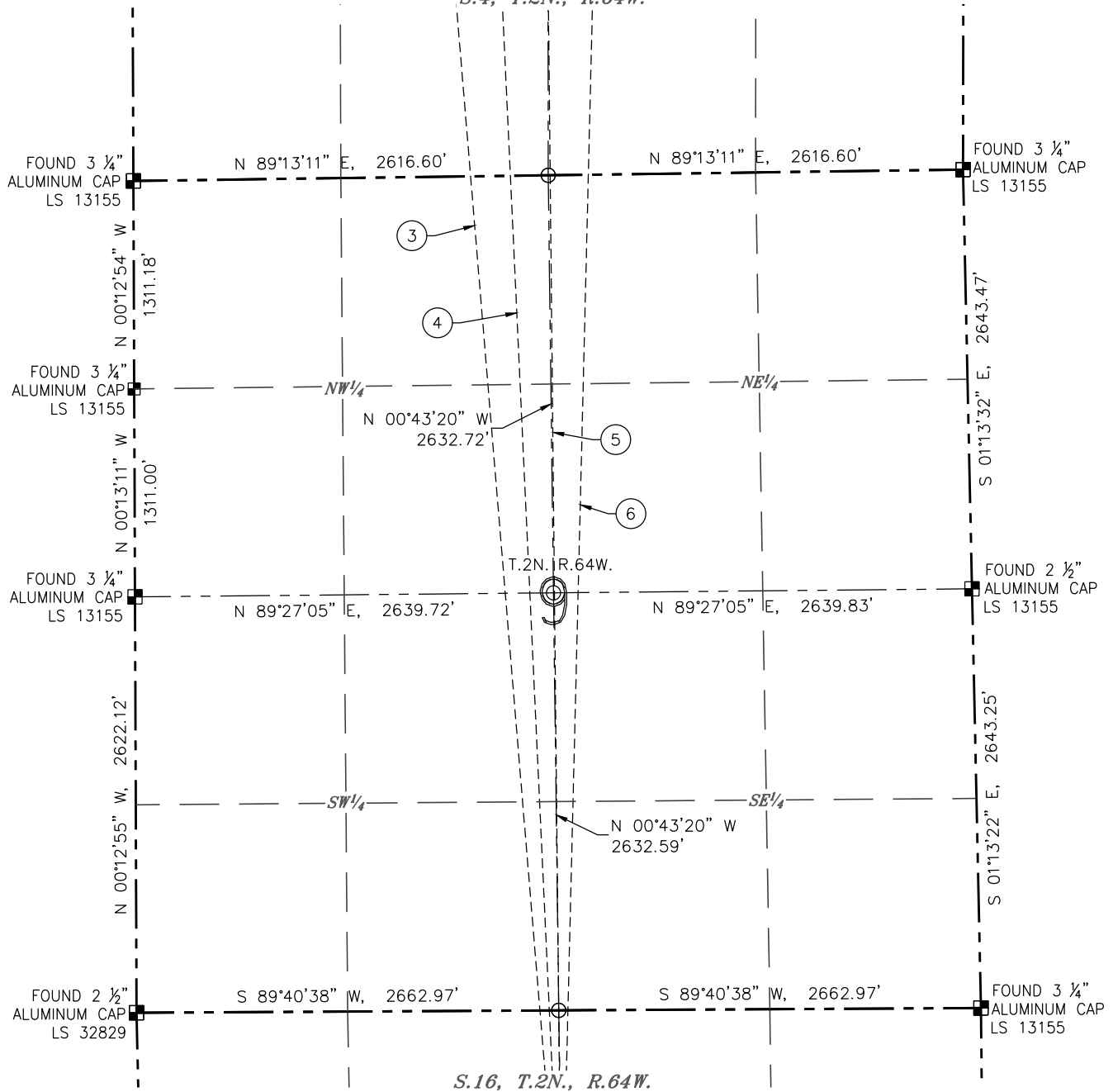
- BORE PATH -

MULTI-WELL PLAN

Y16-28 PAD

(SHEET 3 OF 5)

S.4, T.2N., R.64W.

SECTION: 16
TOWNSHIP: 2N
RANGE: 64W

NOTES:

1. HORIZONTAL DATUM IS NAD 83.
2. VERTICAL DATUM IS NAVD 88.



0 1000'

SCALE: 1" = 1000'

LEGEND

- ⊗ PROPOSED WELL
- ⊙ EXISTING WELL
- ⊗ BOTTOM HOLE
- ⊗ FOUND MONUMENT
- CALCULATED POSITION

DATE: 03/16/2017
JOB #: NE16301

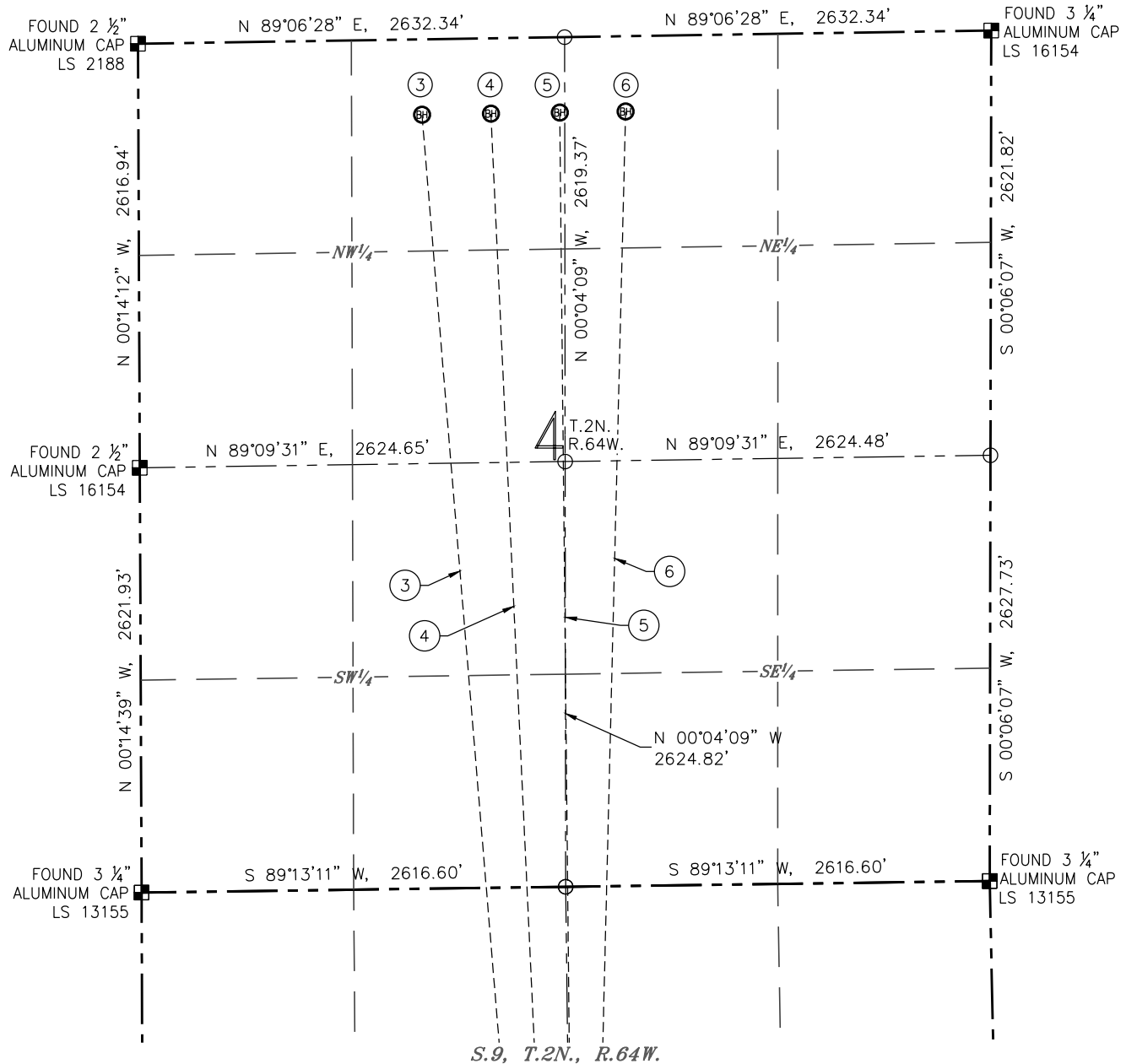
- BOTTOM HOLE DATA -

- BOTTOM HOLE DATA -				- BORE PATH -		
NO.	WELL NAME	FOOTAGES	LATITUDE	LONGITUDE	S-T-R	BEARING, DISTANCE
1	HULLABALOO STATE Y21-763	100' FSL 1810' FWL	N 40.11699°	W 104.55908°	21-2-64	S 03°03'08" W, 10058.60'
2	HULLABALOO STATE Y21-756	100' FSL 2225' FWL	N 40.11699°	W 104.55760°	21-2-64	S 00°54'06" W, 10041.80'
3	RUBICON STATE Y16-763	465' FNL 1750' FWL	N 40.17332°	W 104.55953°	4-2-64	N 04°45'15" W, 10662.37'
4	RUBICON STATE Y16-757	465' FNL 2175' FWL	N 40.17333°	W 104.55801°	4-2-64	N 02°40'19" W, 10643.70'
5	RUBICON STATE Y16-751	465' FNL 2600' FWL	N 40.17334°	W 104.55649°	4-2-64	N 00°35'08" W, 10639.10'
6	RUBICON STATE Y16-744	465' FNL 2255' FEL	N 40.17334°	W 104.55504°	4-2-64	N 01°24'00" E, 10647.78'

MULTI-WELL PLAN

Y16-28 PAD
(SHEET 4 OF 5)

SECTION: 16
TOWNSHIP: 2N
RANGE: 64W



NOTES:

1. HORIZONTAL DATUM IS NAD 83.
2. VERTICAL DATUM IS NAVD 88.

- BOTTOM HOLE DATA -					- BORE PATH -	
NO.	WELL NAME	FOOTAGES	LATITUDE	LONGITUDE	S-T-R	BEARING, DISTANCE
1	HULLABALOO STATE Y21-763	100' FSL 1810' FWL	N 40.11699°	W 104.55908°	21-2-64	S 03°03'08" W, 10058.60'
2	HULLABALOO STATE Y21-756	100' FSL 2225' FWL	N 40.11699°	W 104.55760°	21-2-64	S 00°54'06" W, 10041.80'
3	RUBICON STATE Y16-763	465' FNL 1750' FWL	N 40.17332°	W 104.55953°	4-2-64	N 04°45'15" W, 10662.37'
4	RUBICON STATE Y16-757	465' FNL 2175' FWL	N 40.17333°	W 104.55801°	4-2-64	N 02°40'19" W, 10643.70'
5	RUBICON STATE Y16-751	465' FNL 2600' FWL	N 40.17334°	W 104.55649°	4-2-64	N 00°35'08" W, 10639.10'
6	RUBICON STATE Y16-744	465' FNL 2255' FEL	N 40.17334°	W 104.55504°	4-2-64	N 01°24'00" E, 10647.78'



0 1000'

SCALE: 1" = 1000'

LEGEND

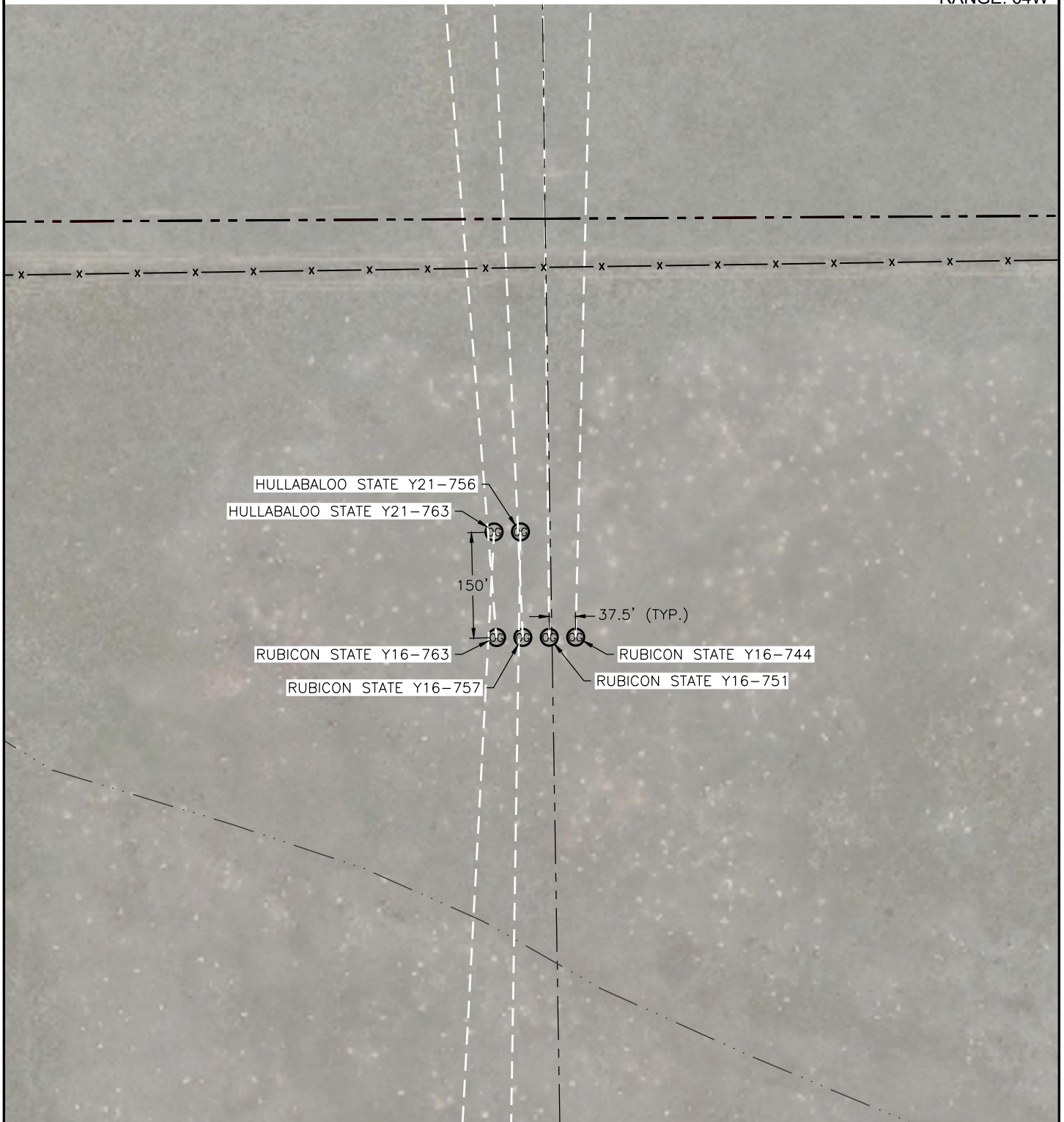
- ⊗ PROPOSED WELL
- ⊙ EXISTING WELL
- ⊕ BOTTOM HOLE
- FOUND MONUMENT
- CALCULATED POSITION

DATE: 03/16/2017
JOB #: NE16301

MULTI-WELL PLAN

Y16-28 PAD
(SHEET 5 OF 5)

SECTION: 16
TOWNSHIP: 2N
RANGE: 64W



SCALE: 1" = 200'

LEGEND

36 PROPOSED WELL

DATE: 03/16/2017
JOB #: NE16301