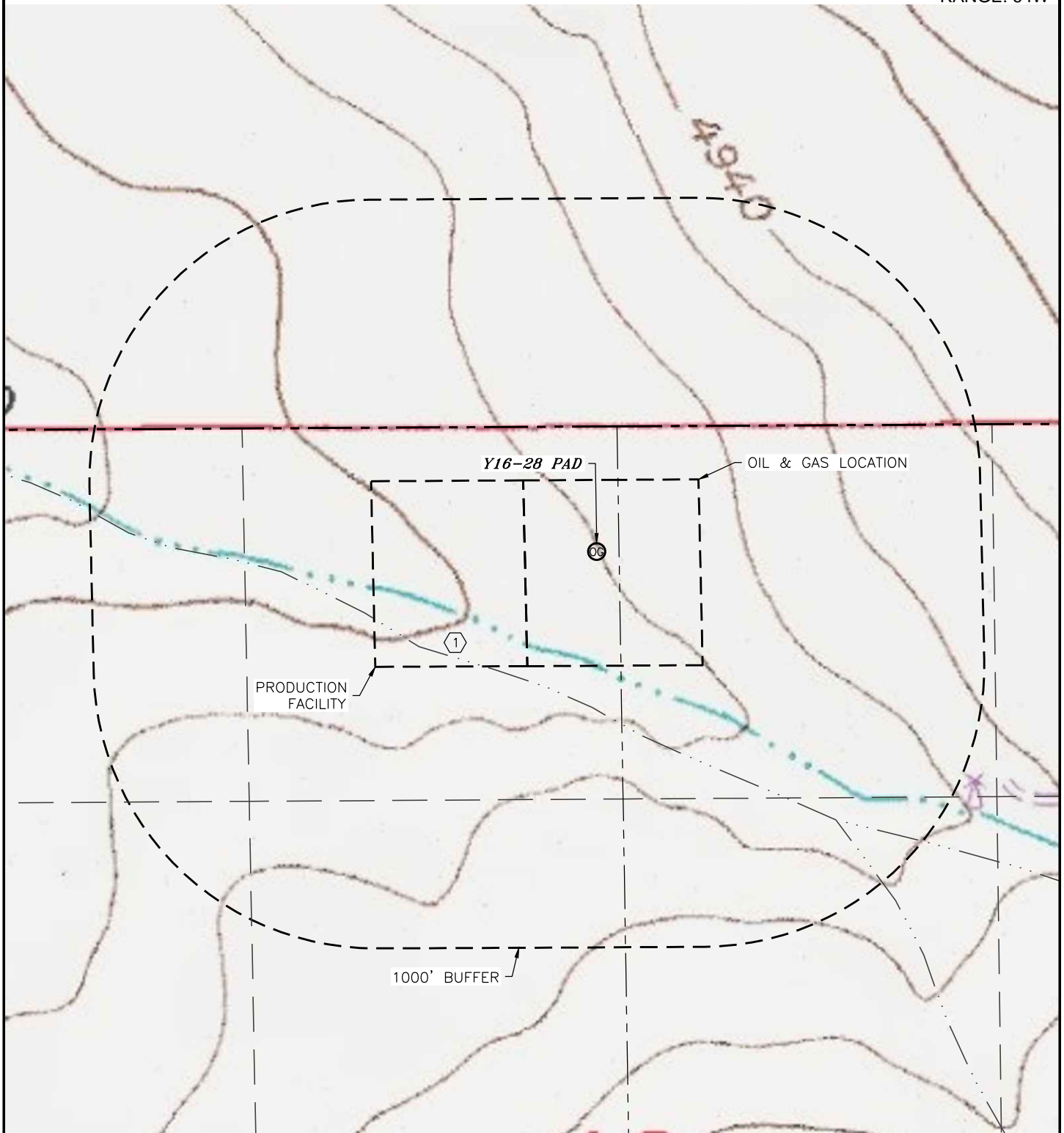


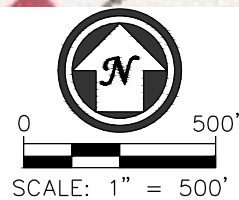
HYDROLOGY MAP

Y16-28 PAD

SECTION: 16
TOWNSHIP: 2N
RANGE: 64W

DISTANCES MEASURED FROM THE EDGE OF THE OIL & GAS LOCATION UNLESS NOTED OTHERWISE:

① DRY SWALE (INSIDE PRODUCTION FACILITY) 0'



LEGEND

OG PROPOSED WELL

DATE: 03/16/2017
JOB #: NE16301