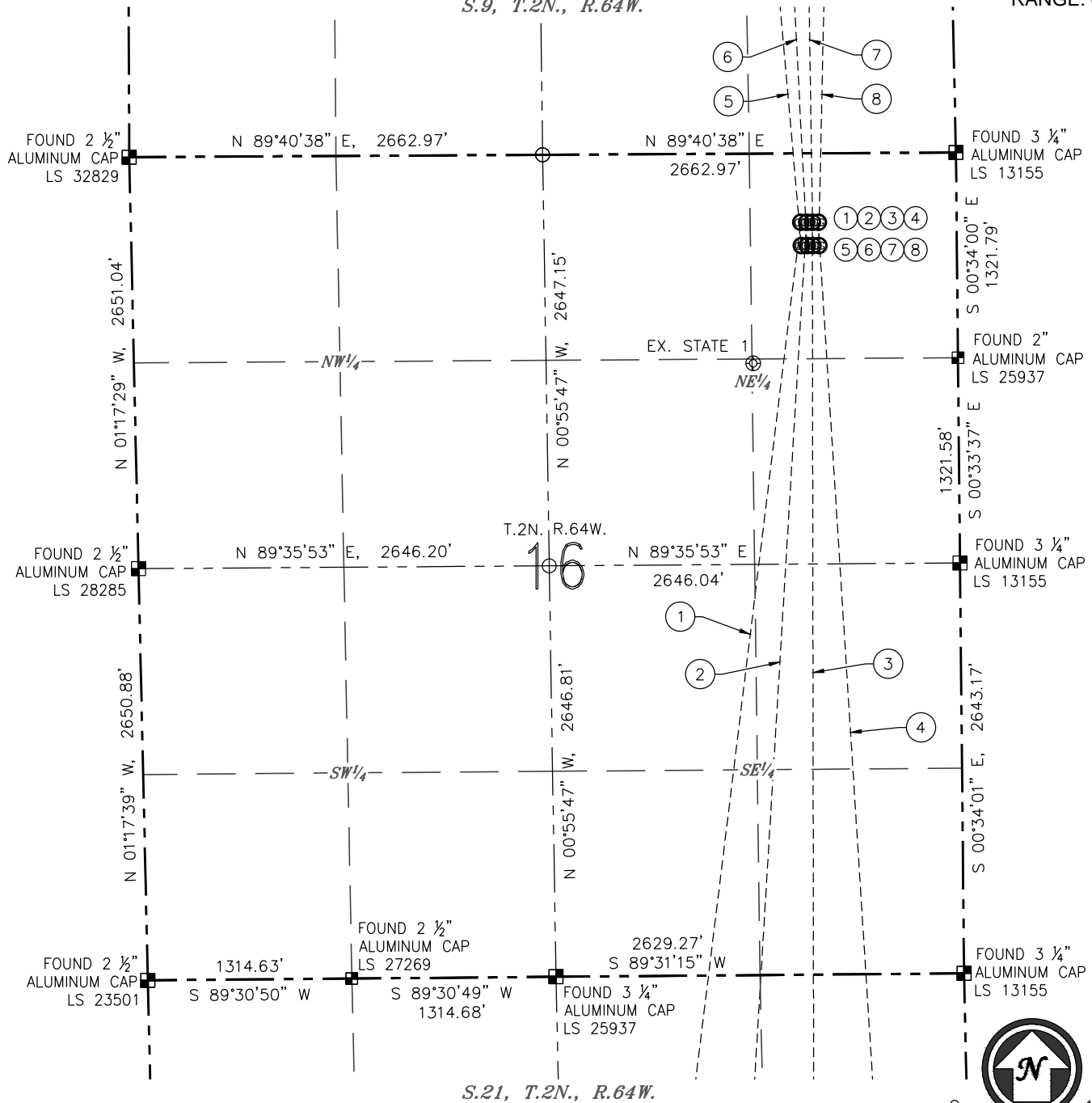


## MULTI-WELL PLAN

Y16-27 PAD

(SHEET 1 OF 5)

S.9, T.2N., R.64W.

SECTION: 16  
TOWNSHIP: 2N  
RANGE: 64W

## - BOTTOM HOLE DATA -

| - BOTTOM HOLE DATA - |                          |                    |             |              |         | - BORE PATH -            |  |
|----------------------|--------------------------|--------------------|-------------|--------------|---------|--------------------------|--|
| NO.                  | WELL NAME                | FOOTAGES           | LATITUDE    | LONGITUDE    | S-T-R   | BEARING, DISTANCE        |  |
| 1                    | HULLABALOO STATE Y21-746 | 100' FSL 2395' FEL | N 40.11698° | W 104.55536° | 21-2-64 | S 06°58'59" W, 10119.13' |  |
| 2                    | HULLABALOO STATE Y21-736 | 100' FSL 1735' FEL | N 40.11698° | W 104.55300° | 21-2-64 | S 03°27'52" W, 10056.15' |  |
| 3                    | HULLABALOO STATE Y21-726 | 100' FSL 1075' FEL | N 40.11698° | W 104.55064° | 21-2-64 | S 00°05'06" E, 10031.44' |  |
| 4                    | HULLABALOO STATE Y21-716 | 100' FSL 415' FEL  | N 40.11698° | W 104.54828° | 21-2-64 | S 03°38'16" E, 10045.37' |  |
| 5                    | RUBICON STATE Y16-738    | 465' FNL 1830' FEL | N 40.17335° | W 104.55352° | 4-2-64  | N 05°02'06" W, 10683.35' |  |
| 6                    | RUBICON STATE Y16-731    | 465' FNL 1405' FEL | N 40.17335° | W 104.55200° | 4-2-64  | N 02°57'26" W, 10662.70' |  |
| 7                    | RUBICON STATE Y16-725    | 465' FNL 980' FEL  | N 40.17336° | W 104.55047° | 4-2-64  | N 00°52'27" E, 10656.14' |  |
| 8                    | RUBICON STATE Y16-718    | 465' FNL 550' FEL  | N 40.17336° | W 104.54894° | 4-2-64  | N 01°14'08" E, 10663.89' |  |

## NOTES:

1. HORIZONTAL DATUM IS NAD 83.
2. VERTICAL DATUM IS NAVD 88.

## LEGEND

- ⊙ PROPOSED WELL
- ⊙ EXISTING WELL
- ⊙ BOTTOM HOLE
- ⊙ FOUND MONUMENT
- CALCULATED POSITION

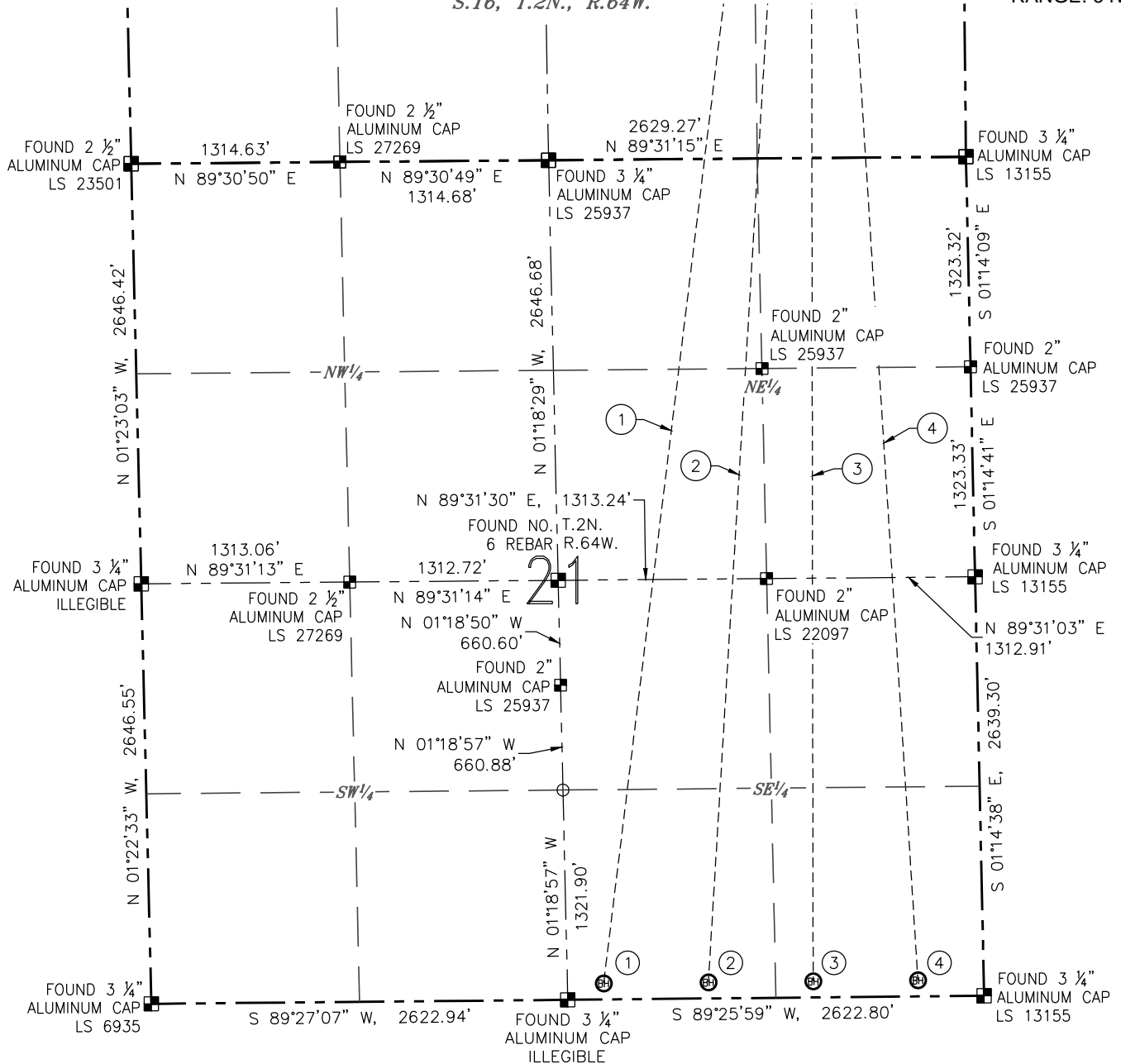
DATE: 03/09/2017  
JOB #: NE16301

## MULTI-WELL PLAN

Y16-27 PAD

(SHEET 2 OF 5)

S.16, T.2N., R.64W.

SECTION: 16  
TOWNSHIP: 2N  
RANGE: 64W

## NOTES:

1. HORIZONTAL DATUM IS NAD 83.
2. VERTICAL DATUM IS NAVD 88.



0 1000'

SCALE: 1" = 1000'

## LEGEND

- ⊗ PROPOSED WELL
- ⊙ EXISTING WELL
- ⊕ BOTTOM HOLE
- ⊗ FOUND MONUMENT
- CALCULATED POSITION

DATE: 03/09/2017  
JOB #: NE16301

## - BOTTOM HOLE DATA -

| NO. | WELL NAME                | FOOTAGES           | LATITUDE    | LONGITUDE    | S-T-R   | BEARING, DISTANCE        |
|-----|--------------------------|--------------------|-------------|--------------|---------|--------------------------|
| 1   | HULLABALOO STATE Y21-746 | 100' FSL 2395' FEL | N 40.11698° | W 104.55536° | 21-2-64 | S 06°58'59" W, 10119.13' |
| 2   | HULLABALOO STATE Y21-736 | 100' FSL 1735' FEL | N 40.11698° | W 104.55300° | 21-2-64 | S 03°27'52" W, 10056.15' |
| 3   | HULLABALOO STATE Y21-726 | 100' FSL 1075' FEL | N 40.11698° | W 104.55064° | 21-2-64 | S 00°05'06" E, 10031.44' |
| 4   | HULLABALOO STATE Y21-716 | 100' FSL 415' FEL  | N 40.11698° | W 104.54828° | 21-2-64 | S 03°38'16" E, 10045.37' |
| 5   | RUBICON STATE Y16-738    | 465' FNL 1830' FEL | N 40.17335° | W 104.55352° | 4-2-64  | N 05°02'06" W, 10683.35' |
| 6   | RUBICON STATE Y16-731    | 465' FNL 1405' FEL | N 40.17335° | W 104.55200° | 4-2-64  | N 02°57'26" W, 10662.70' |
| 7   | RUBICON STATE Y16-725    | 465' FNL 980' FEL  | N 40.17336° | W 104.55047° | 4-2-64  | N 00°52'27" E, 10656.14' |
| 8   | RUBICON STATE Y16-718    | 465' FNL 550' FEL  | N 40.17336° | W 104.54894° | 4-2-64  | N 01°14'08" E, 10663.89' |

## MULTI-WELL PLAN

Y16-27 PAD

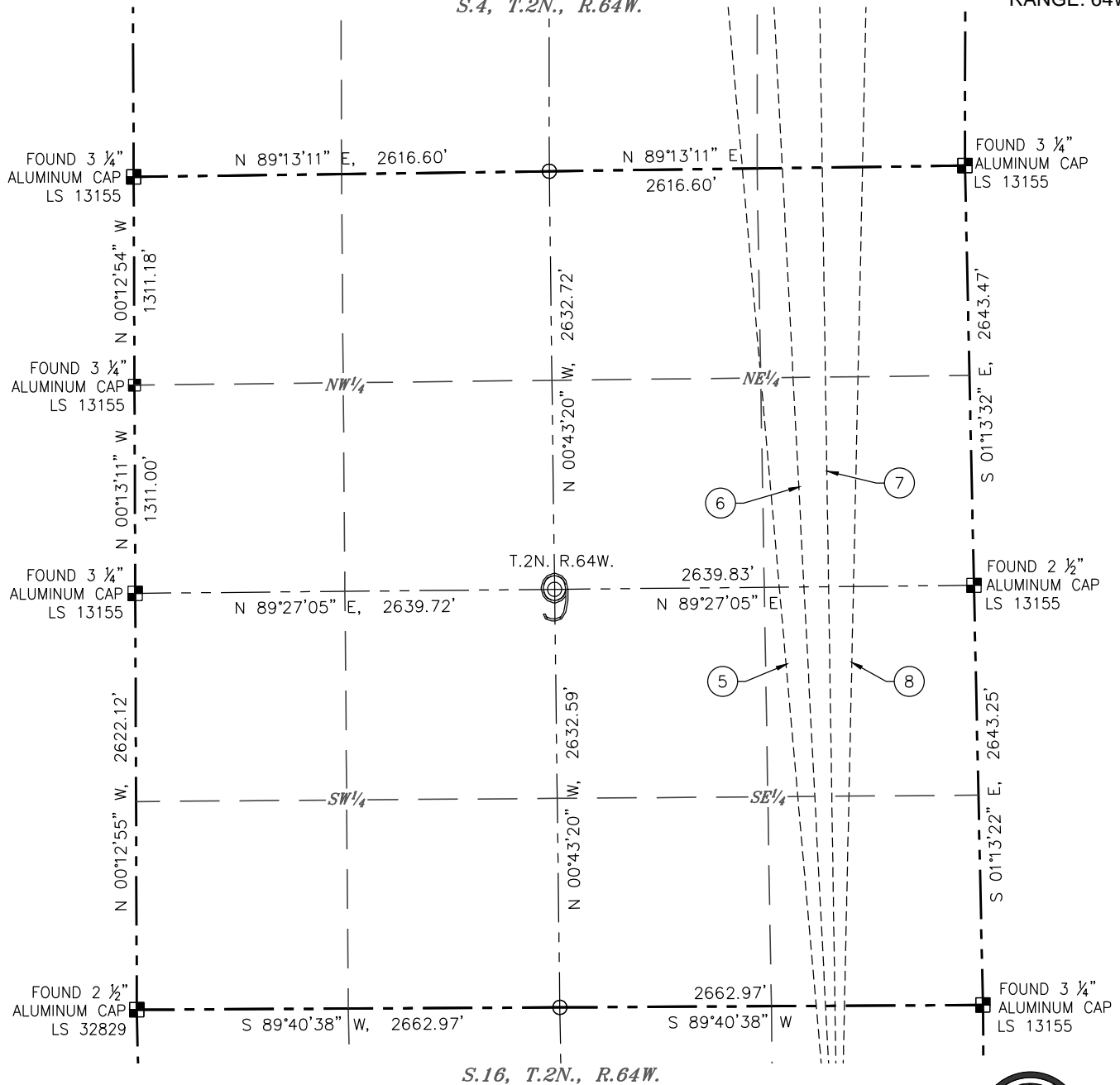
(SHEET 3 OF 5)

*S.4, T.2N., R.64W.*

SECTION: 16

TOWNSHIP: 2N

RANGE: 64W



NOTES:

1. HORIZONTAL DATUM IS NAD 83.
2. VERTICAL DATUM IS NAVD 88.



0 1000'

SCALE: 1" = 1000'






— BOTTOM HOLE DATA —

| - BOTTOM HOLE DATA - |                          |          |           |             |              |         | - BORE PATH -            |
|----------------------|--------------------------|----------|-----------|-------------|--------------|---------|--------------------------|
| NO.                  | WELL NAME                | FOOTAGES |           | LATITUDE    | LONGITUDE    | S-T-R   | BEARING, DISTANCE        |
| 1                    | HULLABALOO STATE Y21-746 | 100' FSL | 2395' FEL | N 40.11698° | W 104.55536° | 21-2-64 | S 06°58'59" W, 10119.13' |
| 2                    | HULLABALOO STATE Y21-736 | 100' FSL | 1735' FEL | N 40.11698° | W 104.55300° | 21-2-64 | S 03°27'52" W, 10056.15' |
| 3                    | HULLABALOO STATE Y21-726 | 100' FSL | 1075' FEL | N 40.11698° | W 104.55064° | 21-2-64 | S 00°05'06" E, 10031.44' |
| 4                    | HULLABALOO STATE Y21-716 | 100' FSL | 415' FEL  | N 40.11698° | W 104.54828° | 21-2-64 | S 03°38'16" E, 10045.37' |
| 5                    | RUBICON STATE Y16-738    | 465' FNL | 1830' FEL | N 40.17335° | W 104.55352° | 4-2-64  | N 05°02'06" W, 10683.35' |
| 6                    | RUBICON STATE Y16-731    | 465' FNL | 1405' FEL | N 40.17335° | W 104.55200° | 4-2-64  | N 02°57'26" W, 10662.70' |
| 7                    | RUBICON STATE Y16-725    | 465' FNL | 980' FEL  | N 40.17336° | W 104.55047° | 4-2-64  | N 00°52'27" E, 10656.14' |
| 8                    | RUBICON STATE Y16-718    | 465' FNL | 550' FEL  | N 40.17336° | W 104.54894° | 4-2-64  | N 01°14'08" E, 10663.89' |

– BORE PATH –

| BEARING, DISTANCE |          |
|-------------------|----------|
| S 06°58'59" W,    | 10119.13 |
| S 03°27'52" W,    | 10056.15 |
| S 00°05'06" E,    | 10031.44 |
| S 03°38'16" E,    | 10045.37 |
| N 05°02'06" W,    | 10683.35 |
| N 02°57'26" W,    | 10662.70 |
| N 00°52'27" E,    | 10656.14 |
| N 01°14'08" E,    | 10663.89 |

LEGEND

-  PROPOSED WELL  
 EXISTING WELL  
 BOTTOM HOLE  
 FOUND MONUMENT  
 CALCULATED POSITION

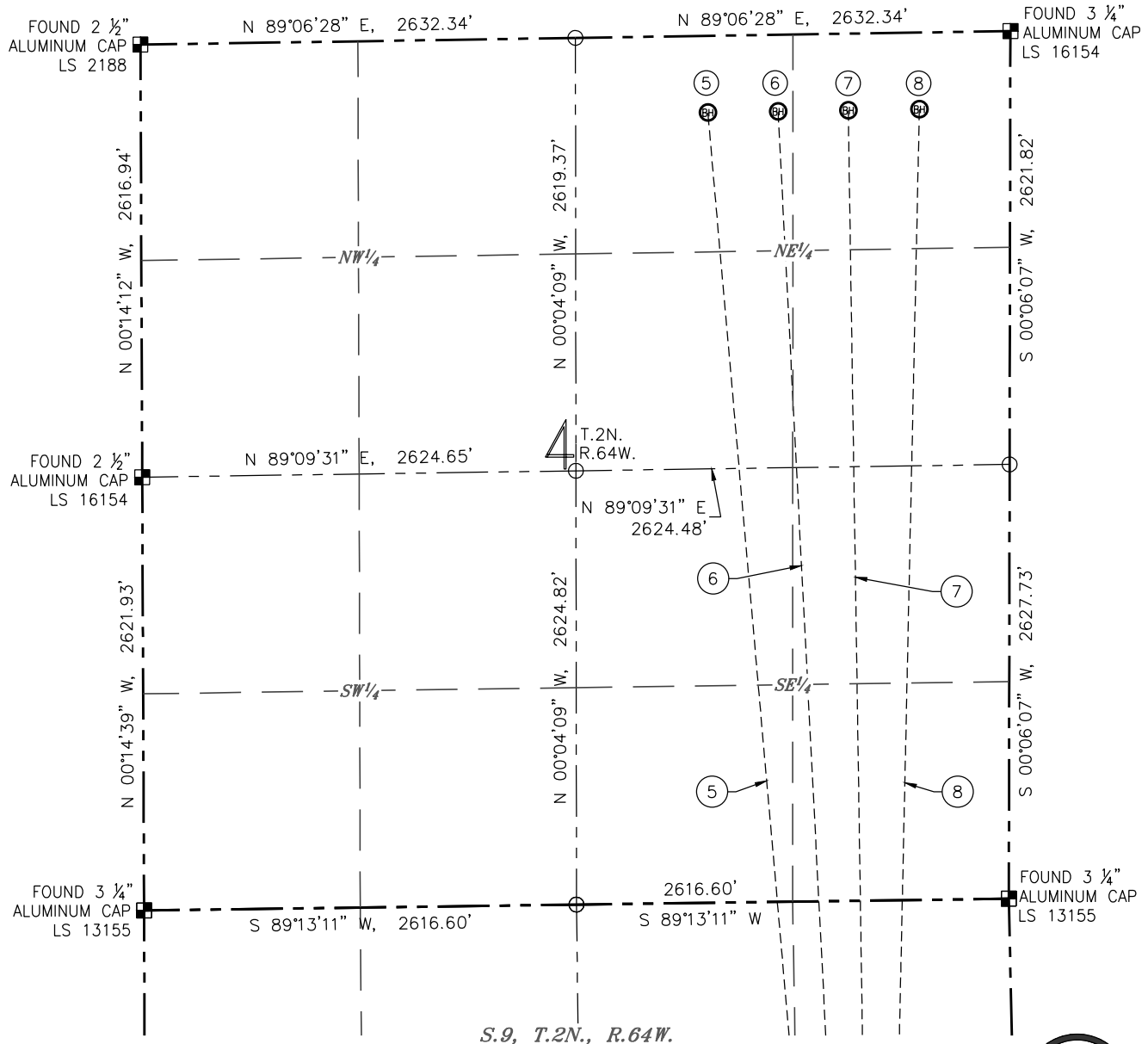
DATE: 03/09/2017

JOB #: NE16301

## MULTI-WELL PLAN

**Y16-27 PAD**  
(SHEET 4 OF 5)

SECTION: 16  
TOWNSHIP: 2N  
RANGE: 64W



## NOTES:

1. HORIZONTAL DATUM IS NAD 83.
2. VERTICAL DATUM IS NAVD 88.



0 1000'

SCALE: 1" = 1000'

## LEGEND

- ⊗ PROPOSED WELL
- ⊙ EXISTING WELL
- ⊕ BOTTOM HOLE
- FOUND MONUMENT
- CALCULATED POSITION

DATE: 03/09/2017  
JOB #: NE16301

## - BOTTOM HOLE DATA -

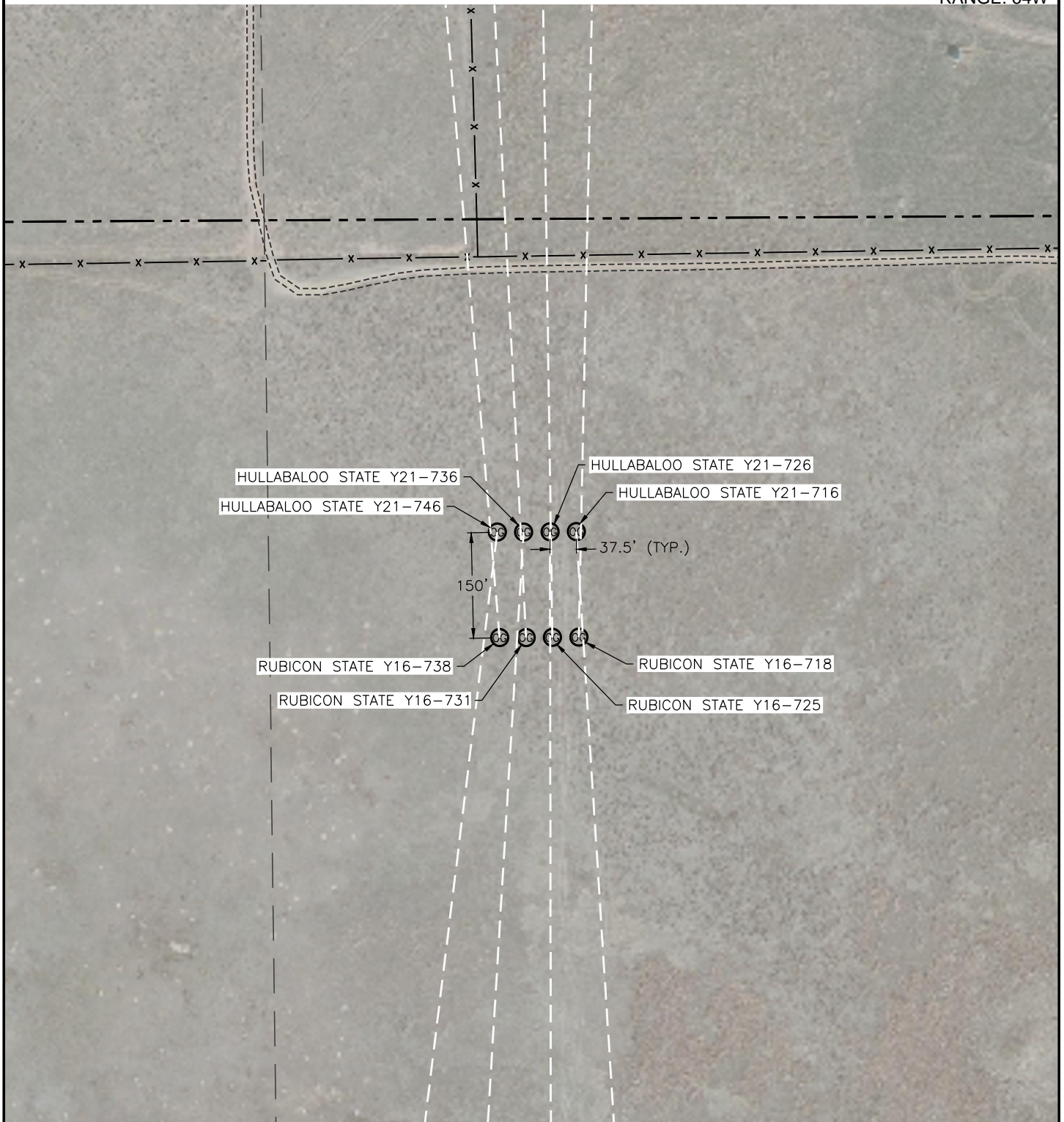
| NO. | WELL NAME                | FOOTAGES           | LATITUDE    | LONGITUDE    | S-T-R   | BEARING, DISTANCE        |
|-----|--------------------------|--------------------|-------------|--------------|---------|--------------------------|
| 1   | HULLABALOO STATE Y21-746 | 100' FSL 2395' FEL | N 40.11698° | W 104.55536° | 21-2-64 | S 06°58'59" W, 10119.13' |
| 2   | HULLABALOO STATE Y21-736 | 100' FSL 1735' FEL | N 40.11698° | W 104.55300° | 21-2-64 | S 03°27'52" W, 10056.15' |
| 3   | HULLABALOO STATE Y21-726 | 100' FSL 1075' FEL | N 40.11698° | W 104.55064° | 21-2-64 | S 00°05'06" E, 10031.44' |
| 4   | HULLABALOO STATE Y21-716 | 100' FSL 415' FEL  | N 40.11698° | W 104.54828° | 21-2-64 | S 03°38'16" E, 10045.37' |
| 5   | RUBICON STATE Y16-738    | 465' FNL 1830' FEL | N 40.17335° | W 104.55352° | 4-2-64  | N 05°02'06" W, 10683.35' |
| 6   | RUBICON STATE Y16-731    | 465' FNL 1405' FEL | N 40.17335° | W 104.55200° | 4-2-64  | N 02°57'26" W, 10662.70' |
| 7   | RUBICON STATE Y16-725    | 465' FNL 980' FEL  | N 40.17336° | W 104.55047° | 4-2-64  | N 00°52'27" E, 10656.14' |
| 8   | RUBICON STATE Y16-718    | 465' FNL 550' FEL  | N 40.17336° | W 104.54894° | 4-2-64  | N 01°14'08" E, 10663.89' |

## - BORE PATH -

# MULTI-WELL PLAN

**Y16-27 PAD**  
(SHEET 5 OF 5)

SECTION: 16  
TOWNSHIP: 2N  
RANGE: 64W



SCALE: 1" = 200'

## LEGEND

69 PROPOSED WELL

DATE: 03/09/2017  
JOB #: NE16301