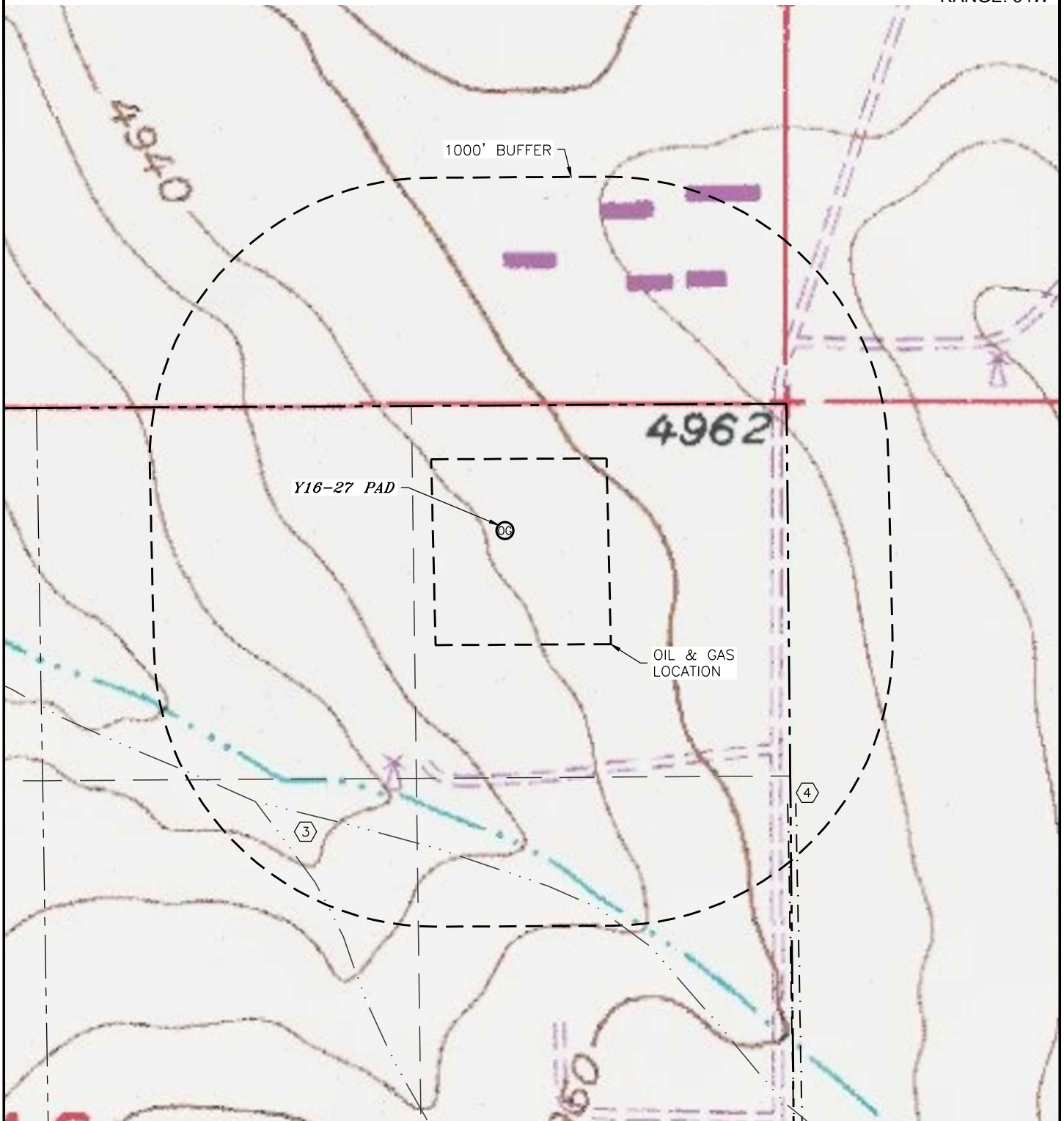


HYDROLOGY MAP

Y16-27 PAD

SECTION: 16
TOWNSHIP: 2N
RANGE: 64W

DISTANCES MEASURED FROM THE EDGE OF THE OIL
& GAS LOCATION UNLESS NOTED OTHERWISE:

- ③ DRY SWALE 696' SW & 855' SW
④ DITCH 845' SE & 867' SE



0 500'
SCALE: 1" = 500'

LEGEND

③ PROPOSED WELL

DATE: 02/03/2017
JOB #: NE16301