

WELL LOCATION CERTIFICATE

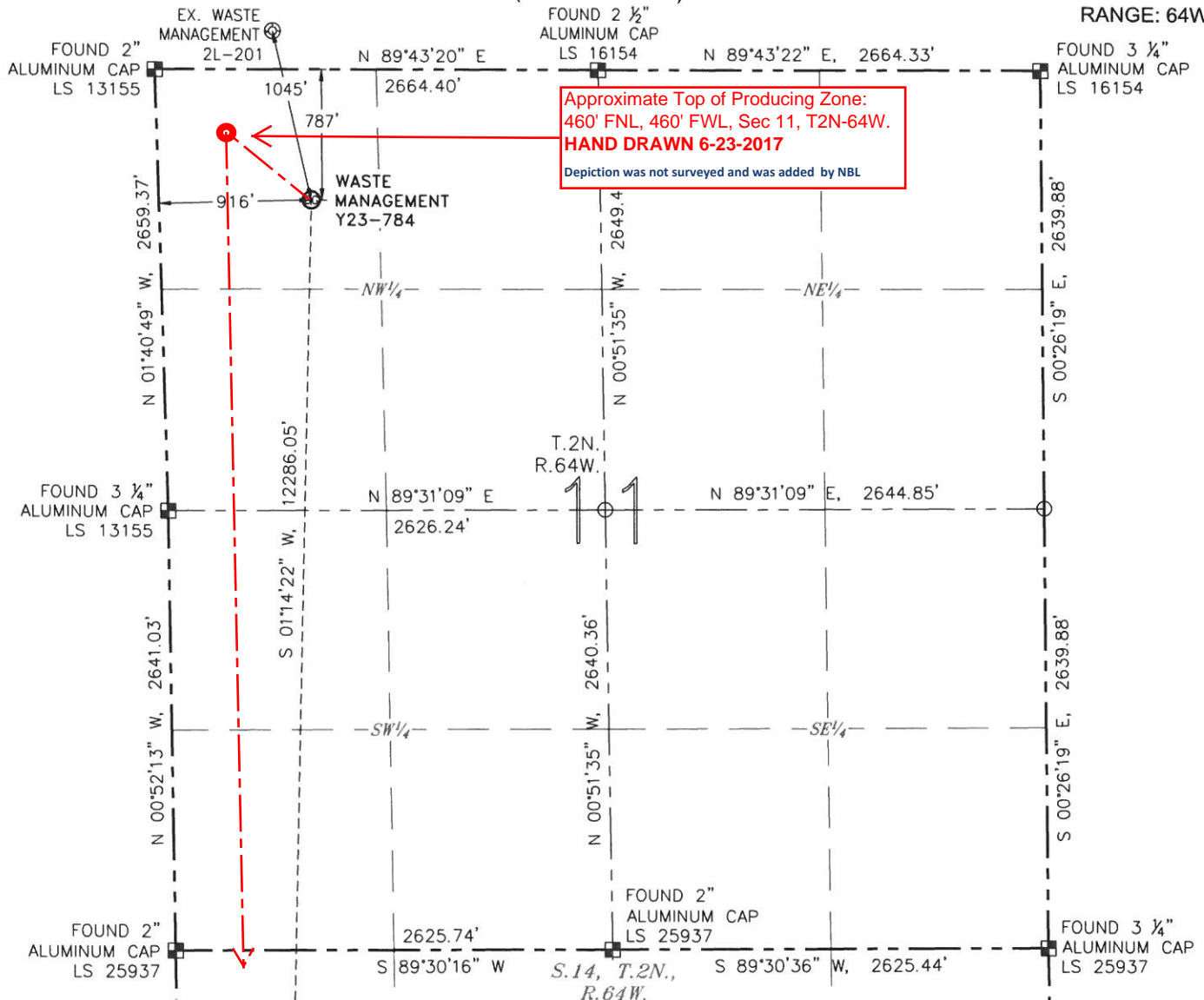
WASTE MANAGEMENT Y23-784

(SHEET 1 OF 3)

SECTION: 11

TOWNSHIP: 2N

RANGE: 64W



NOTES:

- BEARINGS ARE GRID BEARINGS OF THE COLORADO STATE PLANE COORDINATE SYSTEM, NORTH ZONE, NAD 83. THE LINEAL DIMENSIONS SHOWN HEREON ARE BASED UPON THE "U.S. SURVEY FOOT".
- GROUND ELEVATIONS ARE BASED UPON NGS OPUS SOLUTION NAVD 88 DATUM COMPUTED USING GEOID09.
- IMPROVEMENTS: SEE LOCATION DRAWING FOR ALL VISIBLE IMPROVEMENTS WITHIN 500' OF THE DISTURBED AREA.
- SURFACE USE: RANGELAND.
- INSTRUMENT OPERATOR: ANDY MAGGIORE.
- THE NEAREST EXISTING WELL: WASTE MANAGEMENT 2L-201, 1045' NW.

IN ACCORDANCE WITH A REQUEST FROM TYLER BEAVERS WITH NOBLE ENERGY INC., R&R ENGINEERS-SURVEYORS, INC. HAS DETERMINED THE SURFACE HOLE LOCATION OF THE WASTE MANAGEMENT Y23-784 WELL TO BE 787' FROM THE NORTH LINE AND 916' FROM THE WEST LINE AS MEASURED AT RIGHT ANGLES FROM THE SECTION LINES OF SECTION 11, TOWNSHIP 2 NORTH, RANGE 64 WEST, AND THE BOTTOM HOLE LOCATION TO BE 2490' FROM THE NORTH LINE AND 460' FROM THE WEST LINE AS MEASURED AT RIGHT ANGLES FROM THE SECTION LINES OF SECTION 23, TOWNSHIP 2 NORTH, RANGE 64 WEST OF THE 6TH PRINCIPAL MERIDIAN, WELD COUNTY, COLORADO.

I HEREBY CERTIFY THAT THIS WELL LOCATION CERTIFICATE WAS PREPARED BY ME, OR UNDER MY DIRECT SUPERVISION, THAT THE FIELD WORK WAS COMPLETED ON 10/27/2016, FOR AND ON BEHALF OF NOBLE ENERGY INC., THAT IT IS NOT A LAND SURVEY PLAT OR AN IMPROVEMENT SURVEY PLAT, AND THAT IT IS NOT TO BE RELIED UPON FOR ESTABLISHMENT OF FENCES, BUILDINGS, OR OTHER FUTURE IMPROVEMENT LINES.

SURFACE HOLE LOCATION

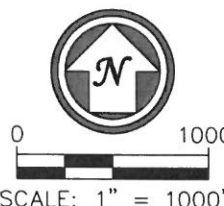
LATITUDE: N 40.15805°
LONGITUDE: W 104.52495°
PDOP: 2.1
ELEVATION: 4952'
¼-¼: NW¼NW¼

BOTTOM HOLE LOCATION

LATITUDE: N 40.12435°
LONGITUDE: W 104.52638°

LEGEND

- ⊗ PROPOSED WELL
- ⊙ EXISTING WELL
- ⊙ BOTTOM HOLE
- ⊙ FOUND MONUMENT
- CALCULATED POSITION



MEASURED FROM THE	BUILDING	BUILDING UNIT	HIGH OCCUPANCY BUILDING UNIT	DESIGNATED OUTSIDE ACTIVITY AREA	PUBLIC ROAD	ABOVEGROUND UTILITY	RAILROAD	PROPERTY LINE
PROPOSED WELLHEAD	4908' S	4904' SW	5280'+	5280'+	4356' E (CR 59)	490' N	5280'+	787' N

STACY LYNN BALZER, PLS 38495

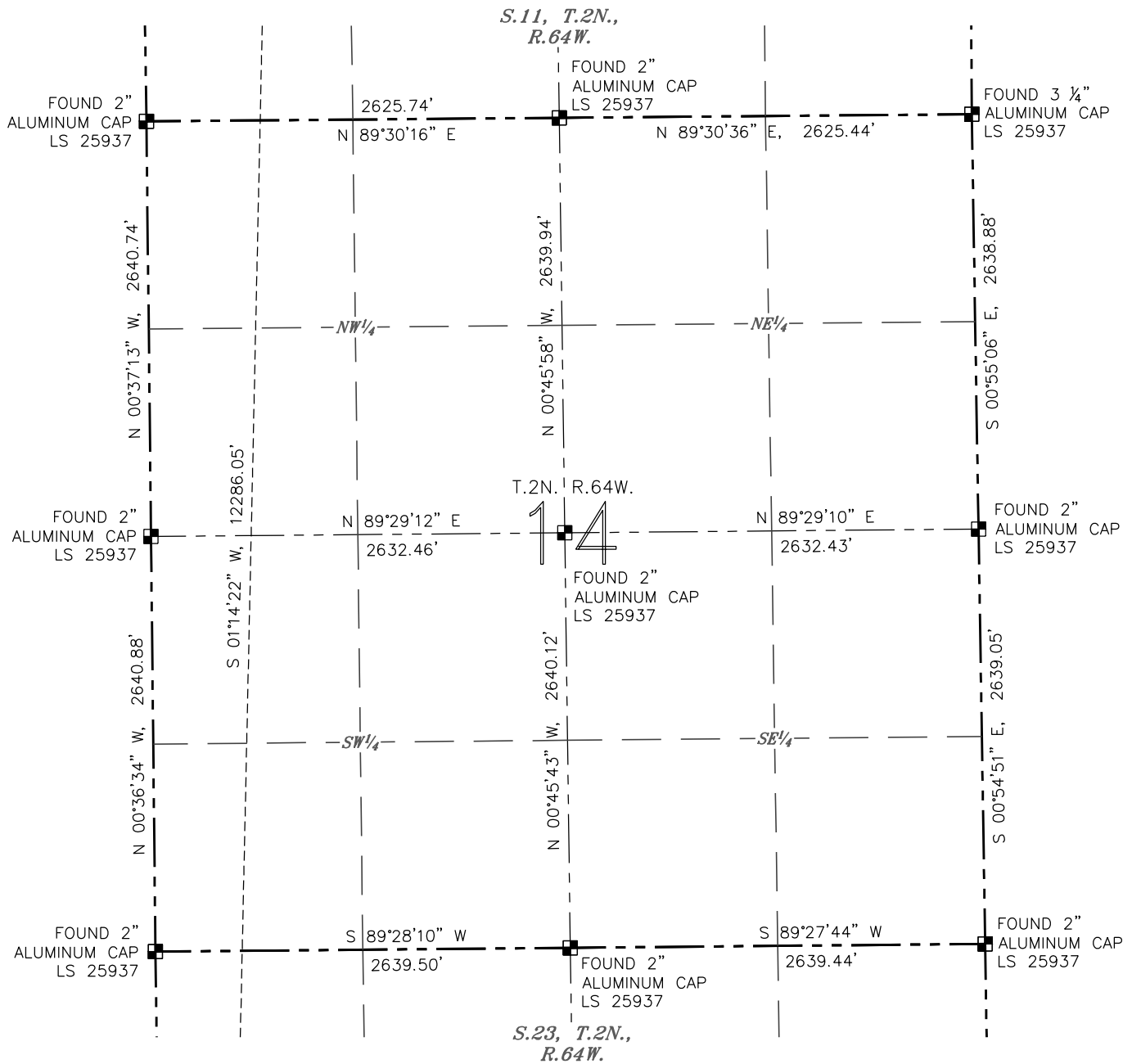
FOR AND ON BEHALF OF R&R ENGINEERS-SURVEYORS, INC.

DATE: 05/10/2017
JOB #: NE16304






WELL LOCATION CERTIFICATE

WASTE MANAGEMENT Y23-784
(SHEET 2 OF 3)

SECTION: 11
TOWNSHIP: 2N
RANGE: 64W



LEGEND

-  PROPOSED WELL
 EXISTING WELL
 BOTTOM HOLE
 FOUND MONUMENT
 CALCULATED POSITION



0 1000'

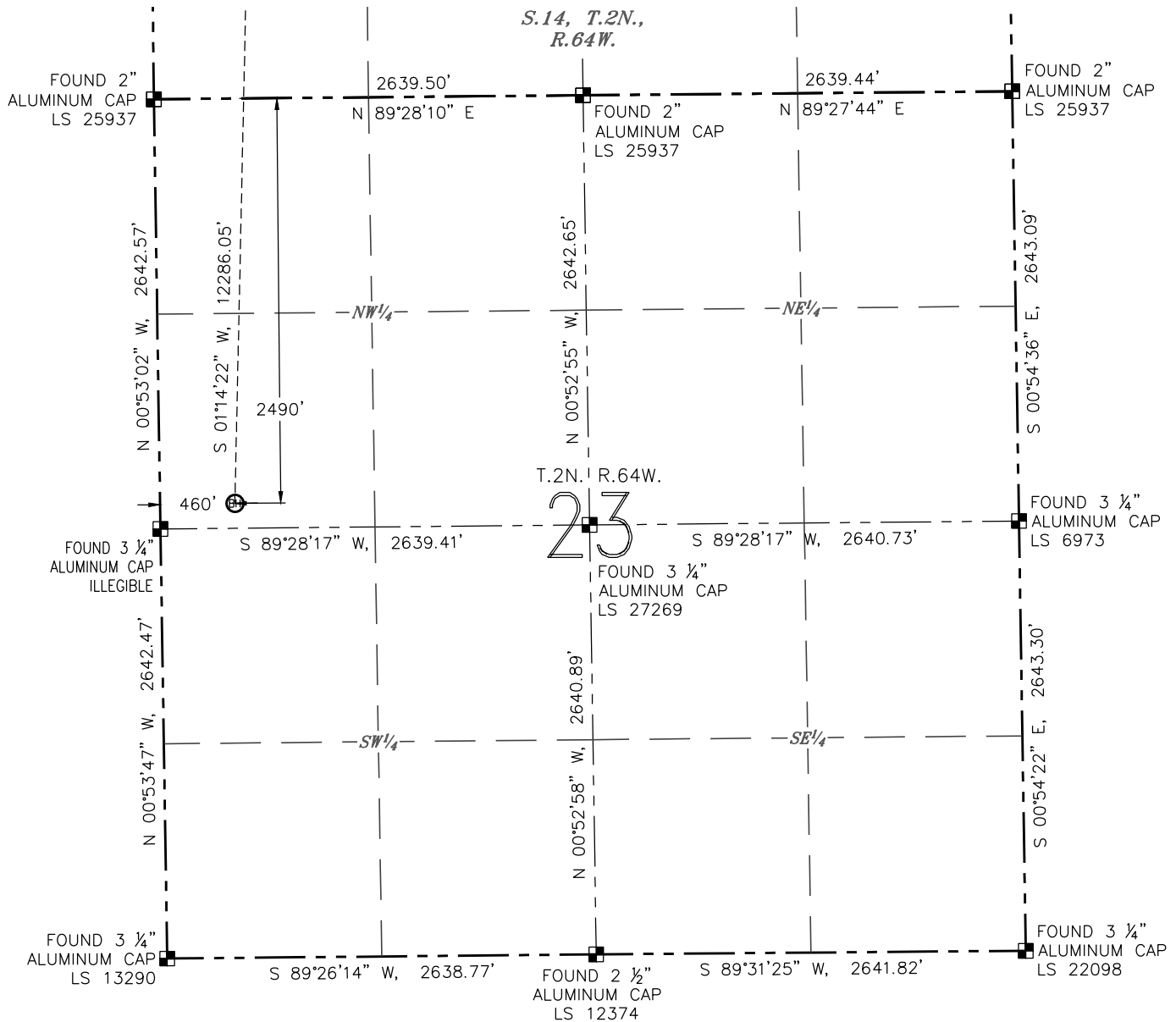
SCALE: 1" = 1000'

DATE: 05/09/2017
JOB #: NE16304

WELL LOCATION CERTIFICATE

WASTE MANAGEMENT Y23-784

(SHEET 3 OF 3)

SECTION: 11
TOWNSHIP: 2N
RANGE: 64W

LEGEND

- ⊗ PROPOSED WELL
- ⊙ EXISTING WELL
- ⊕ BOTTOM HOLE
- FOUND MONUMENT
- CALCULATED POSITION



0 1000'

SCALE: 1" = 1000'