

PHOENIX SURVEYS INC

COMPENSATED DENSITY GAMMA RAY

DATE: 10/18/92 TIME ON LOCATION: 16:30  
TIME LOG START: 17:34 TIME LOG END: 18: 8  
TOP RECORDED INTERVAL: 5800.0  
BOTTOM RECORDED INTERVAL: 6829.0  
TOOL: GAMMA CHL. /BIC DENSITY

CASING DEPTH: 333.0  
CASING DIAMETER: 8.625  
CASING THICKNESS: .250  
CASING TYPE: 24

FLUID TYPE: CEM-CEL  
FLUID DEPTH: .0  
FLUID DENSITY: 9.4 LB/GAL  
FLUID VISCOSITY: 47 SEC/CT.  
FLUID SR. INTY: 100 PPH  
FLUID PH: 7.5  
FLUID LOSS: 8.8 CC/Hr  
HOURS SINCE LAST CIRCULATION: 5.5

COMPANY: GERRITY OIL & GAS CORPORATION  
WELL: SPIKE STATE CC 6-13  
FIELD: WATTENBERG  
COUNTY: WELD  
STATE: COLORADO  
LOCATION: SU SU  
SEC-6, TUP-4N, RGE-53W

TD DRILLER: 6826  
TD LOGGER: 6825  
DEPTH DATUM - PERM: CL  
DEPTH DATUM - DRILLER: X3  
DEPTH DATUM - LOGGER: X3  
ELEVATIONS  
CL: 4604  
DF: 4612  
KB: 4613  
BIT SIZE: 7.875

RI = 3.280 OHM/A @ 72 DEG F SOURCE: FLOWLINE  
RIF = 2.500 OHM/A @ 72 DEG F SOURCE: MEASURED  
RIG = 4.100 OHM/A @ 72 DEG F SOURCE: CALC.  
RI B BOREHOLE TEMPERATURE = 1.270 OHM/A  
BOREHOLE TEMPERATURE @ TD = 197 DEG F  
NONINH. TEMP. GRADIENT = 1.8 DEG/100FT  
LOGGING UNIT NUMBER: 4041  
LOGGING UNIT OPERATOR: JULL  
LOGGING UNIT LOCATION: BRIGHTON, CO  
WITNESSED BY: MR. F. SMITH

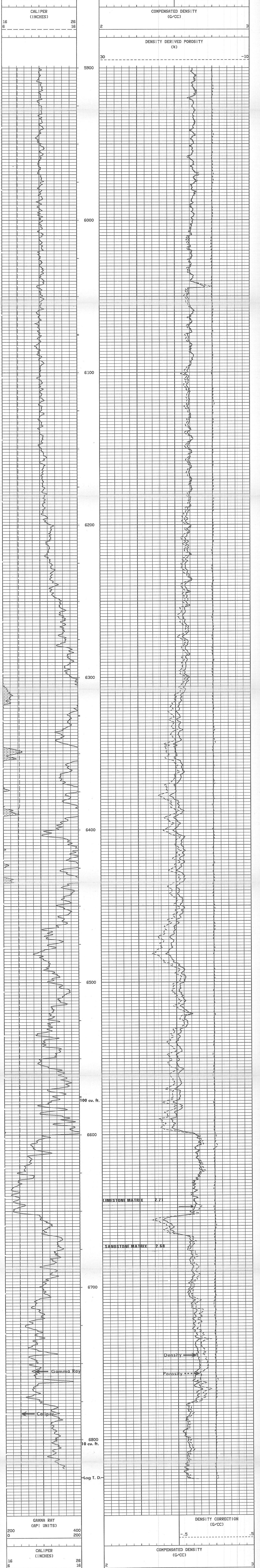
REMARKS :  
VOLUME IS TOTAL HOLE VOLUME.

NO OTHER SERVICES WERE RUN.  
THANKS FOR USING PHOENIX SURVEYS!!

NAME	SER.NO	OFFSET	RUN DIR	NAME	SER.NO	OFFSET	RUN DIR
*GR	00133	2.00	1 ↑	CLPR-D	00032	9.10	1 ↑
DENS	00058	9.70	1 ↑	CORR-D	00058	9.70	1 ↑
POR D	00058	9.70	1 ↑	SSDEN	00058	-----	1 ↑
UFFORS	00058	-----	1 ↑				

ALL INTERPRETATIONS ARE OPINIONS BASED ON INFERENCES FROM ELECTRICAL OR OTHER MEASUREMENTS AND WE CANNOT, AND DO NOT GUARANTEE THE ACCURACY OR CORRECTNESS OF ANY INTERPRETATIONS, AND WE SHALL NOT, EXCEPT IN THE CASE OF GROSS OR WILLFUL NEGLIGENCE ON OUR PART, BE LIABLE OR RESPONSIBLE FOR ANY LOSS, COSTS, DAMAGES OR EXPENSES INCURRED OR SUSTAINED OR RESULTING FROM ANY INTERPRETATION MADE BY ANY OF OUR OFFICERS, AGENTS OR EMPLOYEES.

LOG SECTION



REPEAT SECTION

