

Flowline and Final Reclamation Inspection

June 22, 2017

Operator: KERR MCGEE OIL & GAS ONSHORE LP - # 47120

API: 05-123-17385

Weld County, CO

SWNW Section 13 T3N R68W

Chris Binschus
Reclamation Specialist, COGCC



COLORADO
Oil & Gas Conservation
Commission

Department of Natural Resources

Inspection Photos
Location Name: LDS #T 13-5
API: 05-123-17385



Photo 1. Photo taken from the approximate well location, facing North. Disturbance areas appear to be reflective of reference crop areas.

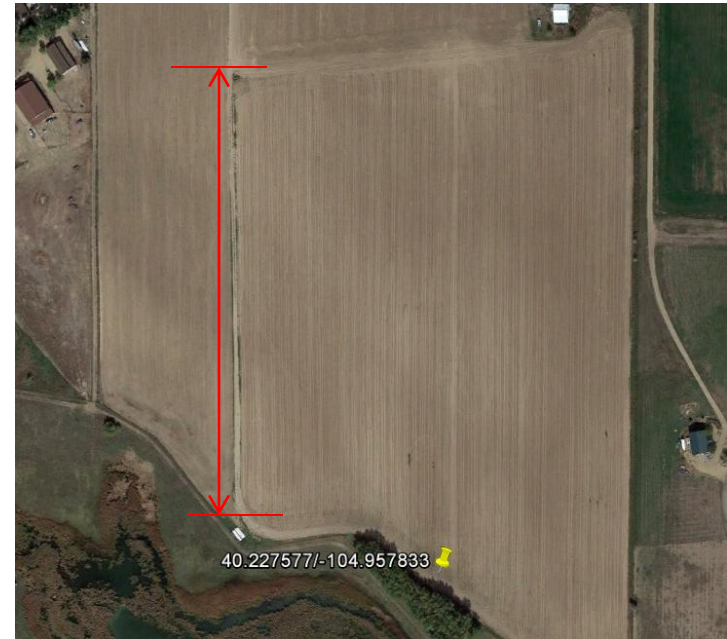


Photo 2. Google Earth aerial imagery from 10/9/2015, illustrating the section of access road that has not been reclaimed. Coordinates on the map are the approximate well location.