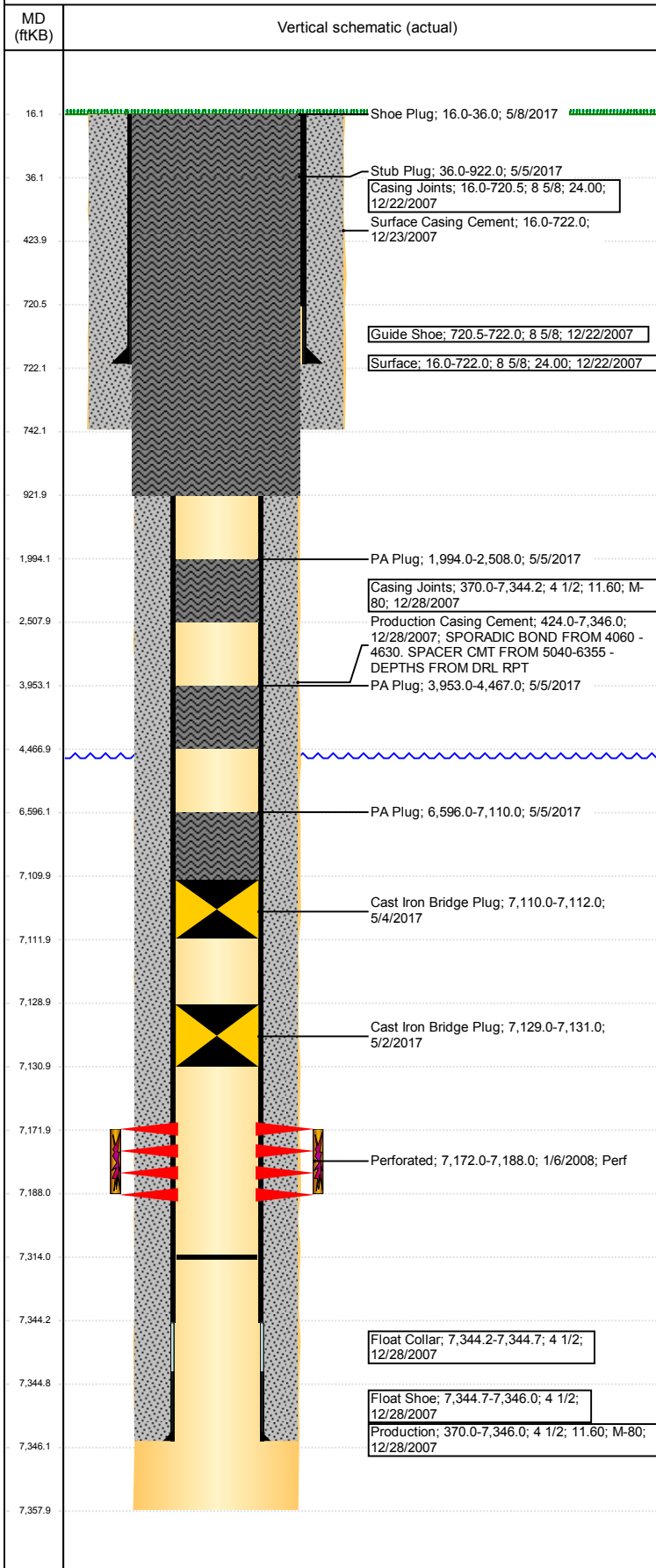


**Well Name: STROMBERGER 13-35**

VERTICAL - ORIGINAL HOLE, 6/20/2017 1:39:24 PM



## Well Header

API 05-123-26235	Business Unit DJ BASIN	District 15	Well Config VERTICAL
Original KB Elevation (ft) 4,825	KB - GL / MSL (ftKB) 16.00	Spud Date 12/22/2007	P & A Date 5/8/2017
Comment			

## Directions To Well

HWY 392 AND CR 25, W 5/10, N INTO BATT, W 1/10, N INTO

## Congressional Location

Quarter 3 SW	Quarter 4 SW	Section 13	Township 6	TwNShp N/S Dir N	Range 67	Range E/W Dir W
-----------------	-----------------	---------------	---------------	---------------------	-------------	--------------------

## Bottom Hole Location

North-South Distance (ft)	From N or S Line	East-West Distance (ft)	From E or W Line
---------------------------	------------------	-------------------------	------------------

## Plug Back Total Depths

Date	Depth (ftKB)	Method	Com
12/28/2007	7,331.0	TAG	FLOAT SHOE
1/7/2008	7,320.0	CASED HOLE LOG	DEPTH LOGGER FROM CBL
2/14/2008	7,331.0	TAG	C/O AND LAND TBG
5/15/2014	7,314.0	TAG	RIH W/ 5 TAG JTS TBG AND DID NOT TAG

## Wellbore Sections

Section Des	Size (in)	Act Top, MD (ftKB)	Act Btm, MD (ftKB)
SURFACE	12 1/4	16	742
PRODUCTION	7 7/8	742	7,358

## Zone Statuses

Zone Name	Status Date	Status	Fluid Type	Job	Prod Method
CODELL	1/29/2008	PR		DRILLING/CO...	
CODELL	5/4/2017	P&A		PLUG AND AB...	

## Casing Strings

Csg Des	Run Date	OD (in)	Wt/Len (lb/ft)	Grade	Top, MD (ftKB)	MD (ftKB)
Surface	12/22/2007	8 5/8	24.00		16.0	722.0
Production	12/28/2007	4 1/2	11.60	M-80	16.0	7,346.0

## Cement

Description	Top Depth (ftKB)	Bottom Depth (ftKB)
Surface Casing Cement	16.0	722.0
Production Casing Cement	424.0	7,346.0
PA Plug	6,596.0	7,110.0
PA Plug	3,953.0	4,467.0
PA Plug	1,994.0	2,508.0
Stub Plug	36.0	922.0
Shoe Plug	16.0	36.0

## Tubing Strings

Tubing Description	Run Date	String...	ID (in)	Wt (lb/ft)	Grade	Len (ft)	Set De...
Tubing - Production	12/17/2014	2 3/8	2.00	4.70	J-55	7,029.13	

## Other In Hole

Run Date	Des	OD (in)	Top (ftKB)	Btm (ftKB)
5/2/2017	Cast Iron Bridge Plug	3.99	7,129.0	7,131.0
5/4/2017	Cast Iron Bridge Plug	3.99	7,110.0	7,112.0

## Logs

Date	Type	Top, MD (ftKB)	Btm, MD (ftKB)
12/27/2007	COMPENSATED DENSITY	3,500.0	7,333.0
12/27/2007	INDUCTION	713.0	7,353.0
1/7/2008	CBL/CCL/GR	300.0	7,318.0
12/2/2013	GYRO	0.0	7,100.0

## Perforation Data

Linked Zone	Bnch/St g	Sum of Entered Shot Total	Top (ftKB)	Btm (ftKB)	Date
CODELL, ORIGINAL HOLE		64	7,172.00	7,188.00	1/6/2008
<b>Total (Sum)</b>		<b>64</b>			

**Well Name: STROMBERGER 13-35**

VERTICAL - ORIGINAL HOLE, 6/20/2017 1:39:24 PM

## Stimulation Intervals

Start Date 1/11/2008	Primary Job Type DRILLING/COMPLETION - ORIGINAL	
Technical Result	Tech Result Details	Tech Result Note
Comment		

