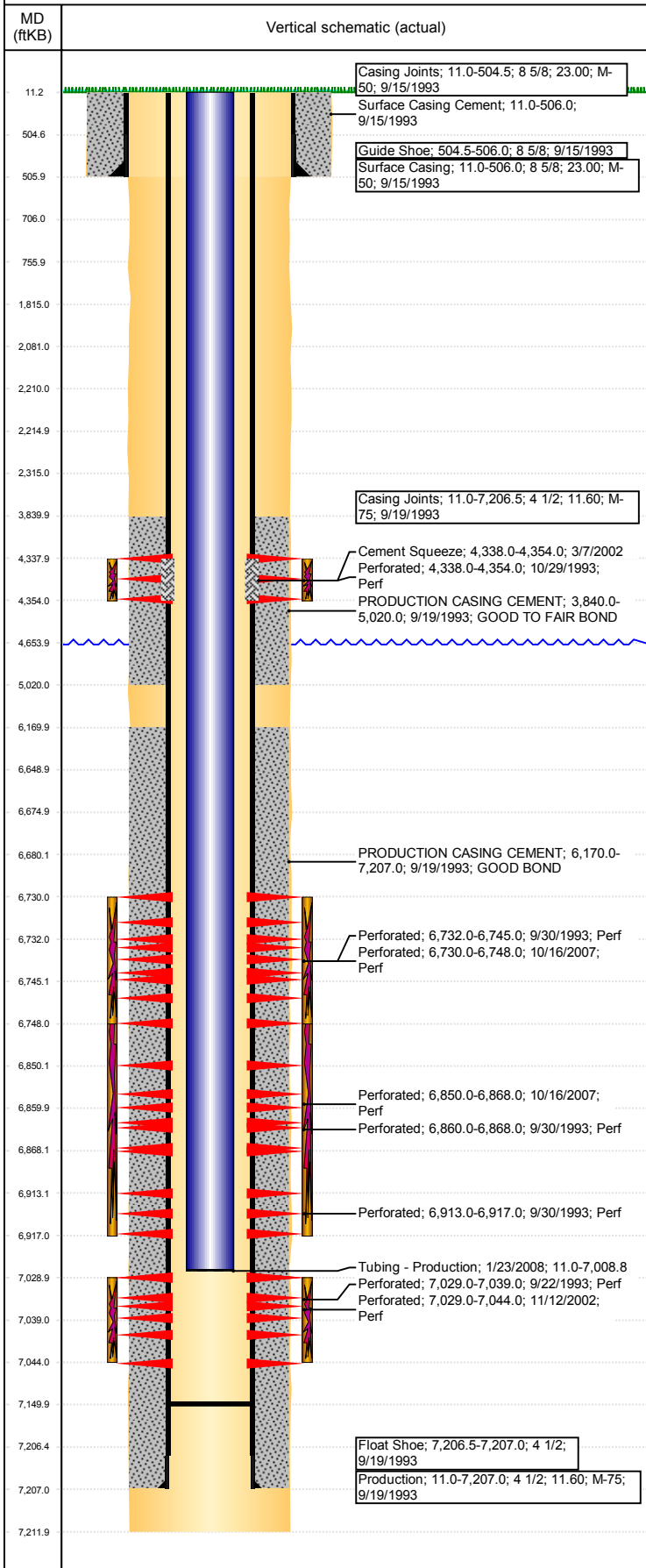


Well Name: ALLES 33-08

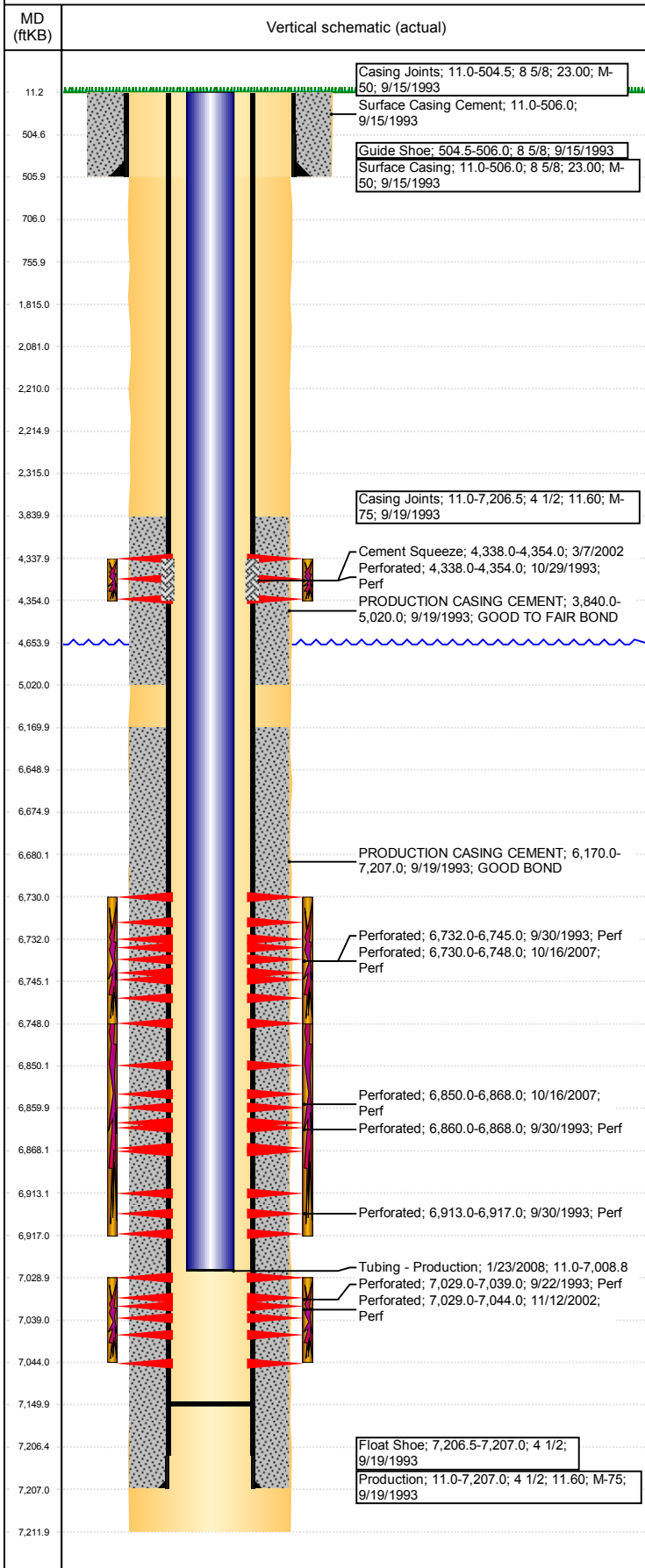
VERTICAL - ORIGINAL HOLE, 6/26/2017 2:36:07 PM



Well Header						
API 05-123-17366	Business Unit DJ BASIN		District 15	Well Config VERTICAL		
Original KB Elevation (ft) 4,666	KB - GL / MSL (ftKB) 11.00		Spud Date 9/14/1993		P & A Date	
Comment						
Directions To Well						
Current PBTD (mKB) ORIGINAL HOLE - 7,150.0						
Surface Location (Congressional)						
Quarter 3	Quarter 4	Section	Township	Twnshp N/S Dir	Range	Range E/W Dir
SE	NE	33	5	N	65	W
Bottom Hole Location						
North-South Distance (ft)		From N or S Line		East-West Distance (ft)		From E or W Line
Plug Back Total Depths						
Date	Depth (ftKB)	Method		Com		
9/22/1993	7,150.0	CASED HOLE LOG		CBL DEPTH LOGGER		
1/22/2008	7,150.0	TAG		MOST RECENT C/O		
Wellbore Sections						
Section Des		Size (in)		Act Top, MD (ftKB)		Act Btm, MD (ftKB)
SURFACE		12 1/4		11		506
PRODUCTION		7 7/8		506		7,212
Zone Statuses						
Zone Name	Status Date	Status	Fluid Type	Job		Prod Method
CODELL	10/21/1993	PR		DRILLING/COMPLETION - ORIGINAL, 9/14/1993...		
CODELL	11/23/2002	PR		RE-FRAC, 3/5/2002 00:00		
NIOBRARA	10/21/1993	PR		DRILLING/COMPLETION - ORIGINAL, 9/14/1993...		
NIOBRARA	1/26/2008	PR		RE-FRAC, 10/11/2007 00:00		
SUSSEX	11/6/1993	PR		RECOMPLETION, 11/3/1993 00:00		
SUSSEX	3/7/2002	AB		RE-FRAC, 3/5/2002 00:00		
Casing Strings						
Csg Des	Run Date	OD (in)	Wt/Len (lb/ft)	Grade	Top, MD (ftKB)	MD (ftKB)
Surface Casing	9/15/1993	8 5/8	23.00	M-50	11.0	506.0
Production	9/19/1993	4 1/2	11.60	M-75	11.0	7,207.0
Cement						
Des				Top (ftKB)		Btm (ftKB)
Surface Casing Cement				11.0		506.0
PRODUCTION CASING CEMENT				3,840.0		5,020.0
PRODUCTION CASING CEMENT				6,170.0		7,207.0
Cement Squeeze				4,338.0		4,354.0
Tubing Components						
Item Des		OD (in)	Wt (lb/ft)	Grade	Jts	Len (ft)
Perforation Data						
Linked Zone	Bnch/Stg	Sum of Entered Shot Total	Top (ftKB)	Btm (ftKB)	Date	
SUSSEX, ORIGINAL HOLE		33	4,338.00	4,354.00	10/29/1993	
NIOBRARA, ORIGINAL HOLE	A	72	6,730.00	6,748.00	10/16/2007	
NIOBRARA, ORIGINAL HOLE	A	8	6,732.00	6,745.00	9/30/1993	
NIOBRARA, ORIGINAL HOLE	B	72	6,850.00	6,868.00	10/16/2007	
NIOBRARA, ORIGINAL HOLE	B	10	6,860.00	6,868.00	9/30/1993	
NIOBRARA, ORIGINAL HOLE	C	6	6,913.00	6,917.00	9/30/1993	
CODELL, ORIGINAL HOLE		20	7,029.00	7,039.00	9/22/1993	
CODELL, ORIGINAL HOLE		60	7,029.00	7,044.00	11/12/2002	
Total (Sum)		281				
Other In Hole						
Run Date	Des			OD (in)	Top (ftKB)	Btm (ftKB)
1/22/2008	Cast Iron Bridge Plug			4	6,675.0	6,680.0
6/12/2017	CICR			4	2,210.0	2,215.0
Logs						
Date	Type			Top, MD (ftKB)	Btm, MD (ftKB)	
9/19/1993	COMPENSATED DENSITY			4,230.0	7,212.0	
9/19/1993	INDUCTION			507.0	7,210.0	

Well Name: ALLES 33-08

VERTICAL - ORIGINAL HOLE, 6/26/2017 2:36:08 PM



Logs			
Date	Type	Top, MD (ftKB)	Btm, MD (ftKB)
9/22/1993	CBL/CCL/GR	3,700.0	7,145.0
Stimulation Intervals			
Bnch/Stg	Start Date	Primary Job Type	
	9/28/1993	DRILLING/COMPLETION - ORIGINAL	
Comment			
CODELL NEW DRILL			
Volume Slurry Total (gal)			
0.00			
Treat Pressure Avg (psi)	Treat Pressure Max (psi)	Slurry Rate Avg (bbl/min)	Slurry Rate Max (bbl/min)
4,700.0	5,400.0	15.0	15.0
Bnch/Stg	Start Date	Primary Job Type	
	10/8/1993	DRILLING/COMPLETION - ORIGINAL	
Comment			
NIOBRARA NEW DRILL			
Volume Slurry Total (gal)			
0.00			
Treat Pressure Avg (psi)	Treat Pressure Max (psi)	Slurry Rate Avg (bbl/min)	Slurry Rate Max (bbl/min)
4,800.0	5,350.0	15.0	
Bnch/Stg	Start Date	Primary Job Type	
	11/3/1993	RECOMPLETION	
Comment			
SUSSEX RECOMPLETE			
Volume Slurry Total (gal)			
0.00			
Treat Pressure Avg (psi)	Treat Pressure Max (psi)	Slurry Rate Avg (bbl/min)	Slurry Rate Max (bbl/min)
2,600.0	3,500.0	25.0	26.0
Bnch/Stg	Start Date	Primary Job Type	
	11/18/2002	RE-FRAC	
Comment			
CODELL REFRAC			
Volume Slurry Total (gal)			
0.00			
Treat Pressure Avg (psi)	Treat Pressure Max (psi)	Slurry Rate Avg (bbl/min)	Slurry Rate Max (bbl/min)
4,730.0	5,332.0	14.4	14.9
Bnch/Stg	Start Date	Primary Job Type	
	11/6/2007	RE-FRAC	
Comment			
NIOBRARA REFRAC			
Volume Slurry Total (gal)			
0.00			
Treat Pressure Avg (psi)	Treat Pressure Max (psi)	Slurry Rate Avg (bbl/min)	Slurry Rate Max (bbl/min)
6,795.0	7,800.0	23.9	33.5