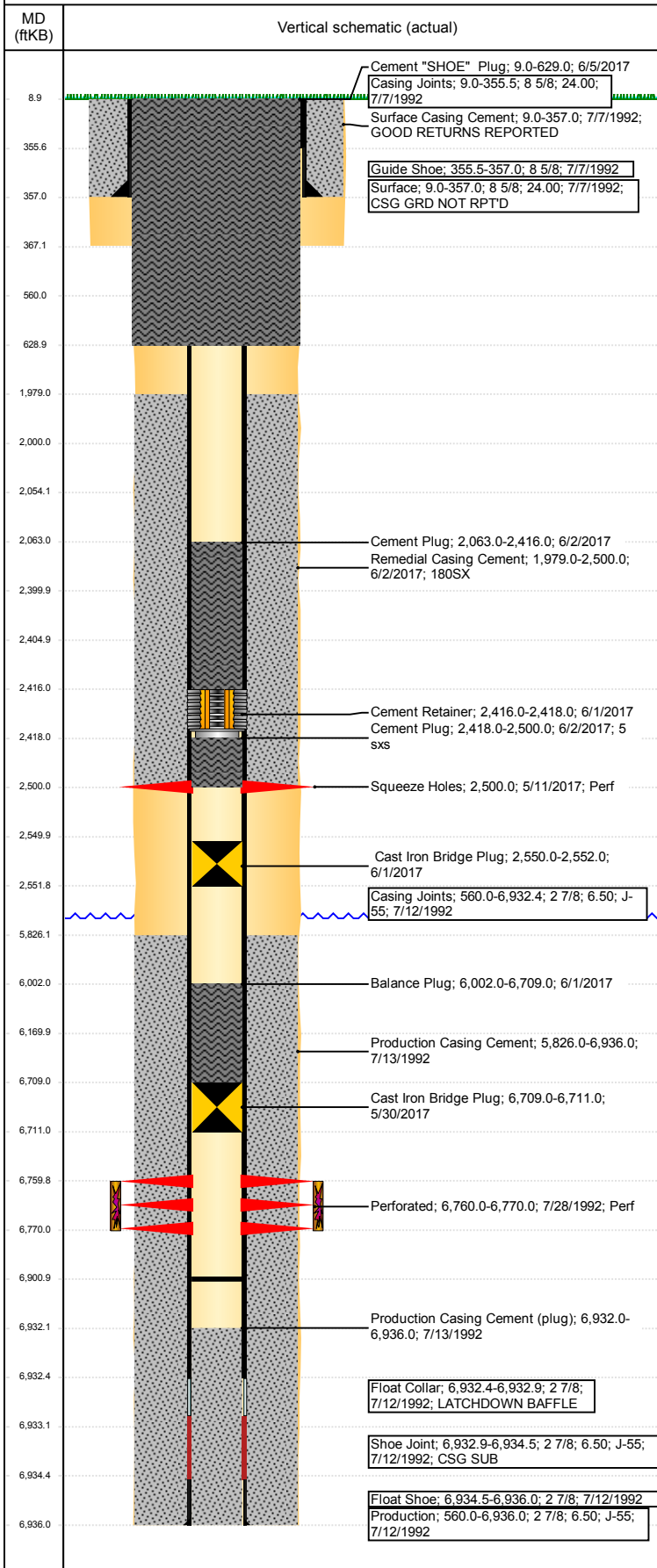


# Wellbore Schematic Input Report

**Well Name: SPIKE STATE GWS C24-06**

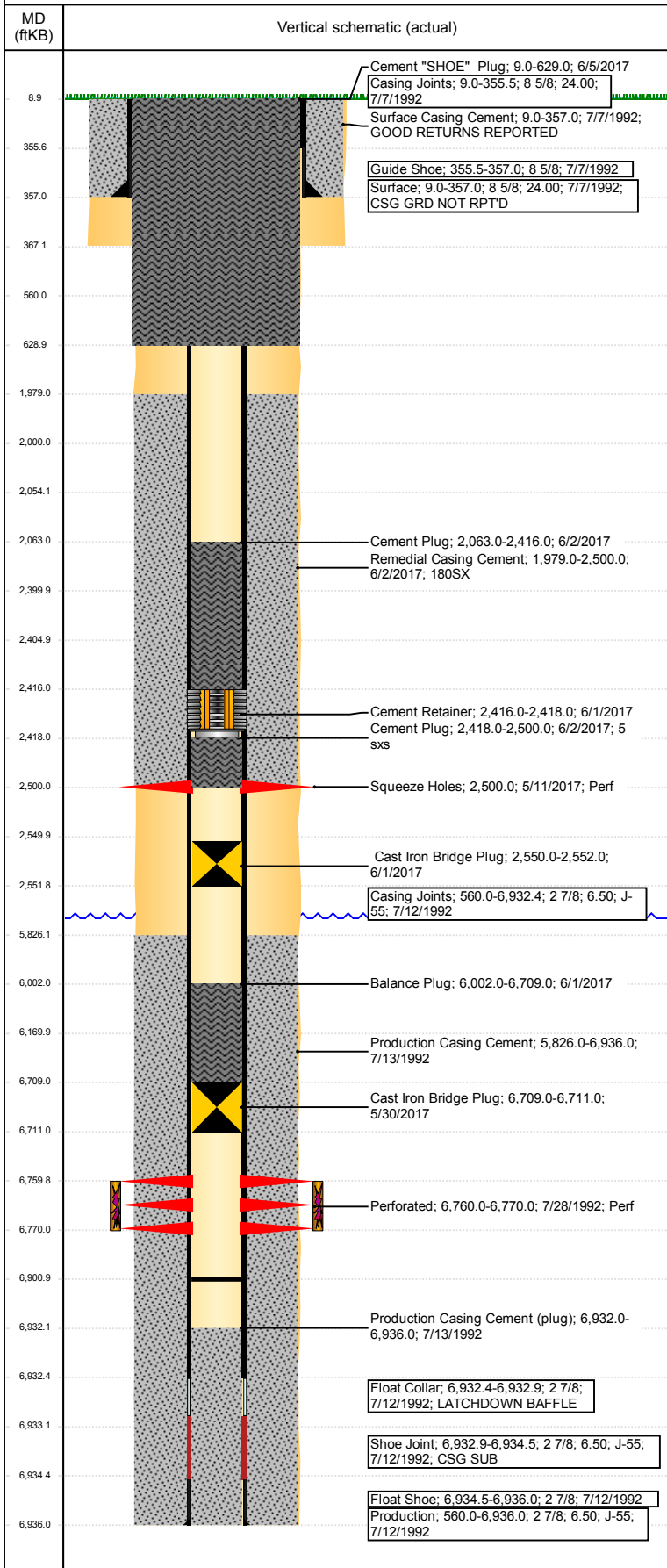
VERTICAL - ORIGINAL HOLE, 6/26/2017 12:23:22 PM



Well Header						
API 05-123-15791	Business Unit DJ BASIN		District 15	Well Config VERTICAL		
Original KB Elevation (ft) 4,690	KB - GL / MSL (ftKB) 9.00		Spud Date 7/7/1992		P & A Date 6/5/2017	
Comment						
Directions To Well WCR 46 & WCR 61, SOUTH 1.1 MILES, WEST THAN SOUTH 1 MILE TO WINDMILL, NORTHWEST 0.4 MILES INTO						
Congressional Location						
Quarter 3 SE	Quarter 4 NW	Section 24	Township 4	Twntshp N/S Dir N	Range 64	Range E/W Dir W
Bottom Hole Location						
North-South Distance (ft)		From N or S Line		East-West Distance (ft)		From E or W Line
Plug Back Total Depths						
Date	Depth (ftKB)	Method		Com		
7/12/1992	6,932.0	CASING TALLY		TOP OF SUB W/LATCHDOWN BAFFLE		
7/16/1992	6,883.0	CASED HOLE LOG		DEPTH LOGGER ON CBL		
4/18/2011	6,901.0	TUBING TALLY				
Wellbore Sections						
Section Des		Size (in)		Act Top, MD (ftKB)		Act Btm, MD (ftKB)
SURFACE		12 1/4		9		367
PRODUCTION		7 7/8		367		6,936
Zone Statuses						
Zone Name	Status Date	Status	Fluid Type	Job	Prod Method	
CODELL	8/17/1992	PR		DRILLING/CO...		
CODELL	5/30/2017	P&A		PLUG AND AB...		
Casing Strings						
Csg Des	Run Date	OD (in)	Wt/Len (lb/ft)	Grade	Top, MD (ftKB)	MD (ftKB)
Surface	7/7/1992	8 5/8	24.00		9.0	357.0
Production	7/12/1992	2 7/8	6.50	J-55	9.0	6,936.0
Cement						
Description Surface Casing Cement			Top Depth (ftKB) 9.0		Bottom Depth (ftKB) 357.0	
Description Production Casing Cement			Top Depth (ftKB) 5,826.0		Bottom Depth (ftKB) 6,936.0	
Description Balance Plug			Top Depth (ftKB) 6,002.0		Bottom Depth (ftKB) 6,709.0	
Description Remedial Casing Cement			Top Depth (ftKB) 1,979.0		Bottom Depth (ftKB) 2,500.0	
Description Cement Plug			Top Depth (ftKB) 2,418.0		Bottom Depth (ftKB) 2,500.0	
Description Cement Plug			Top Depth (ftKB) 2,063.0		Bottom Depth (ftKB) 2,416.0	
Description Cement "SHOE" Plug			Top Depth (ftKB) 9.0		Bottom Depth (ftKB) 629.0	
Tubing Strings						
Tubing Description Tubing - Production	Run Date 4/19/2011	String... 1 1/2	ID (in)	Wt (lb/ft) 2.75	Grade J-55	Len (ft) 6,727.94
Set De...						
Other In Hole						
Run Date	Des			OD (in)	Top (ftKB)	Btm (ftKB)
5/11/2017	*COPY* Cement Retainer			2.441	2,400.0	2,405.0
5/30/2017	Cast Iron Bridge Plug			2.441	6,709.0	6,711.0
6/1/2017	Cement Retainer			2.441	2,416.0	2,418.0
6/1/2017	Cast Iron Bridge Plug			2.441	2,550.0	2,552.0
Logs						
Date	Type			Top, MD (ftKB)	Btm, MD (ftKB)	
7/12/1992	COMPENSATED DENSITY			6,100.0	6,949.0	
7/16/1992	CBL/CCL/GR			5,720.0	6,878.0	
4/15/2011	GYRO			10.0	6,700.0	
Perforation Data						
Linked Zone	Bnch/St g	Sum of Entered Shot Total	Top (ftKB)	Btm (ftKB)	Date	
		4	2,500.00	2,500.00	5/11/2017	
CODELL, ORIGINAL HOLE		40	6,760.00	6,770.00	7/28/1992	

**Well Name: SPIKE STATE GWS C24-06**

VERTICAL - ORIGINAL HOLE, 6/26/2017 12:23:25 PM



Perforation Data					
Linked Zone	Brnch/St g	Sum of Entered Shot Total	Top (ftKB)	Btm (ftKB)	Date
Total (Sum)		44			
Stimulation Intervals					
Start Date 7/28/1992		Primary Job Type DRILLING/COMPLETION - ORIGINAL			
Technical Result		Tech Result Details		Tech Result Note	
Comment					