

LEGEND:

- 90° SYMBOL
- PROPOSED WELLHEAD.
- LANDING POINT.
- BOTTOM OF COMPLETED INTERVAL.
- TARGET BOTTOM HOLE TD.
- SECTION CORNERS LOCATED. (NAD 83)

T5N, R61W, 6th P.M.

BILL BARRETT CORPORATION

KUNSEMILLER 5-61-20 19 NW21 PAD #5-61-20-0801B2B  
NW 1/4 NW 1/4, SECTION 21, T5N, R61W, 6th P.M.  
WELD COUNTY, COLORADO

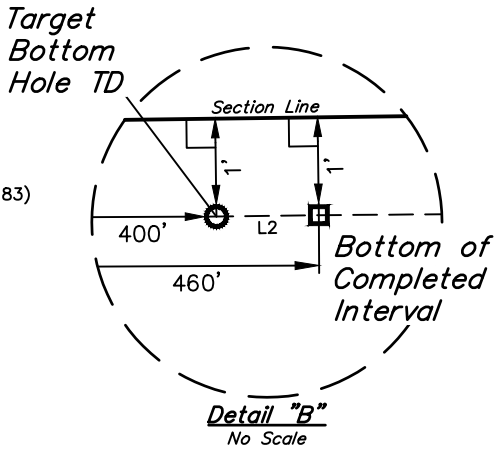
BASIS OF BEARINGS

BASIS OF BEARINGS IS A G.P.S. OBSERVATION

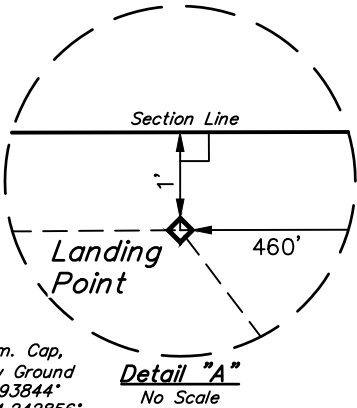
BASIS OF ELEVATION

SPOT ELEVATION LOCATED AT THE NORTHEAST CORNER OF SECTION 24, T5N, R62W, 6th. P.M. TAKEN FROM THE POINT OF ROCKS, QUADRANGLE, COLORADO, WELD COUNTY, 7.5 MINUTE QUAD (TOPOGRAPHIC MAP) PUBLISHED BY THE UNITED STATES DEPARTMENT OF THE INTERIOR, GEOLOGICAL SURVEY. SAID ELEVATION IS MARKED AS BEING 4530 FEET.

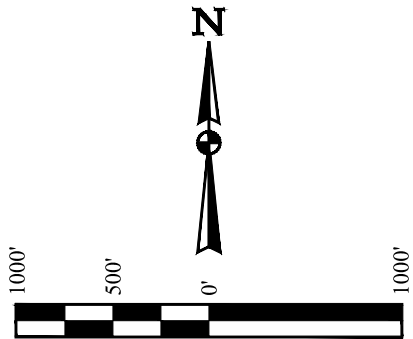
2006 Alum. Cap,  
Intersection  
of 4 Fences  
Lat: 40.393656°  
Long: 104.261780°



2004 Alum. Cap,  
0.3' Below Ground  
Lat: 40.393844°  
Long: 104.242856°

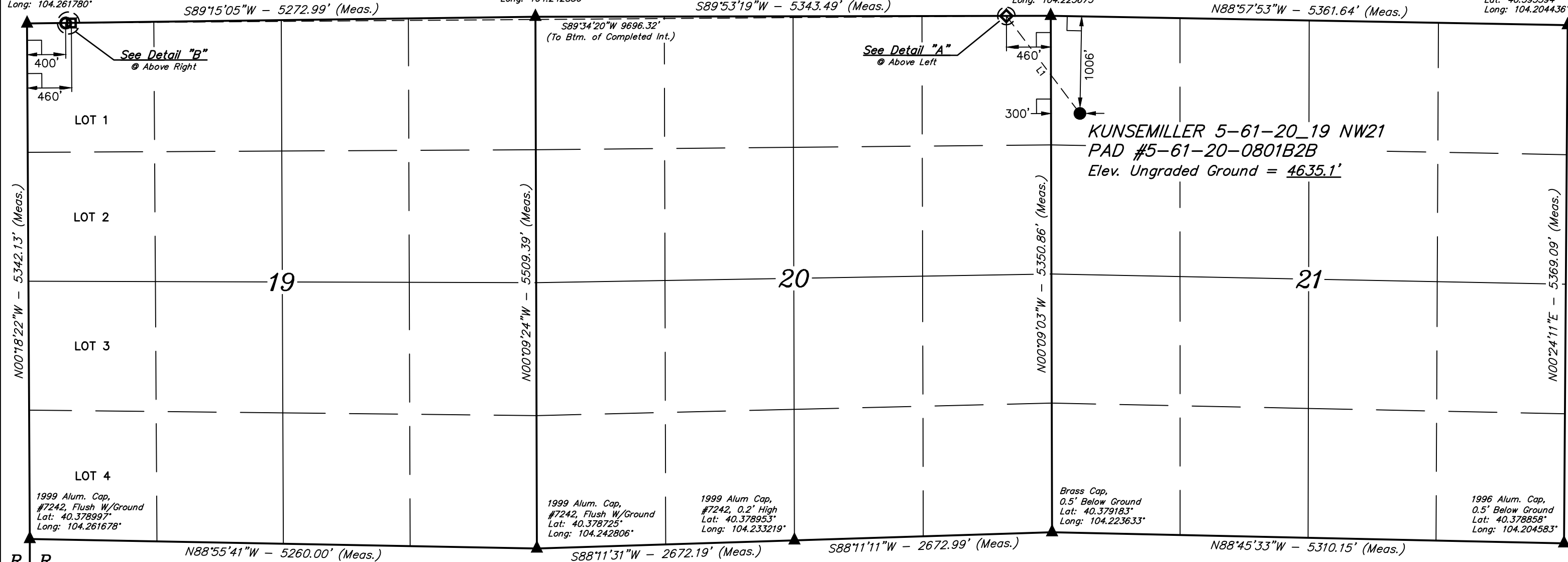


LINE TABLE		
LINE	DIRECTION	LENGTH
L1	N37°03'41"W	1265.47'
L2	S89°15'05"W	60.00'



Brass Cap,  
0.5' Below Ground  
Lat: 40.393867°  
Long: 104.223675°

1996 Alum Cap,  
0.5' Below Ground,  
Rebar  
Lat: 40.393594°  
Long: 104.204436°



R  
62  
W

R  
61  
W

PDOP = 1.3

NAD 83 (SURFACE LOCATION)	NAD 83 (LANDING POINT)	NAD 83 (BTM. OF COMPLETED INT.)	NAD 83 (TARGET BOTTOM HOLE TD)
LATITUDE = 40°23'27.93" (40.391092)	LATITUDE = 40°23'37.91" (40.393864)	LATITUDE = 40°23'37.21" (40.393669)	LATITUDE = 40°23'37.20" (40.393667)
LONGITUDE = 104°13'21.33" (104.222592)	LONGITUDE = 104°13'31.18" (104.225328)	LONGITUDE = 104°15'36.46" (104.260128)	LONGITUDE = 104°15'37.24" (104.260344)
NAD 27 (SURFACE LOCATION)	NAD 27 (LANDING POINT)	NAD 27 (BTM. OF COMPLETED INT.)	NAD 27 (TARGET BOTTOM HOLE TD)
LATITUDE = 40°23'27.99" (40.391108)	LATITUDE = 40°23'37.97" (40.393881)	LATITUDE = 40°23'37.28" (40.393689)	LATITUDE = 40°23'37.27" (40.393686)
LONGITUDE = 104°13'19.51" (104.222086)	LONGITUDE = 104°13'29.36" (104.224822)	LONGITUDE = 104°15'34.64" (104.259622)	LONGITUDE = 104°15'35.42" (104.259839)
STATE PLANE NAD 83 (CO. NORTH)	STATE PLANE NAD 83 (CO. NORTH)	STATE PLANE NAD 83 (CO. NORTH)	STATE PLANE NAD 83 (CO. NORTH)
N: 1387877.56 E: 3355806.08	N: 1388876.38 E: 3355029.59	N: 1388668.68 E: 3345338.02	N: 1388667.06 E: 3345278.05
STATE PLANE NAD 27 (CO. NORTH)	STATE PLANE NAD 27 (CO. NORTH)	STATE PLANE NAD 27 (CO. NORTH)	STATE PLANE NAD 27 (CO. NORTH)
N: 387879.18 E: 2355956.30	N: 388877.98 E: 2355179.78	N: 388670.32 E: 2345488.00	N: 388668.70 E: 2345428.04

CERTIFICATE

THIS IS TO CERTIFY THAT THE ABOVE PLAT WAS PREPARED FROM FIELD NOTES OF ACTUAL SURVEYS MADE BY ME OR UNDER MY SUPERVISION, AND THAT THE SAME ARE TRUE AND CORRECT TO THE BEST OF MY KNOWLEDGE AND BELIEF.



REV: 1 06-16-17 C.C. (LP & BHL CHANGE)



UELS, LLC  
Corporate Office \* 85 South 200 East  
Vernal, UT 84078 \* (435) 789-1017

SURVEYED BY	CHAD MEIERS, C.M.	10-27-15	SCALE
DRAWN BY	C.C.	11-05-15	1" = 1000'

WELL LOCATION PLAT