

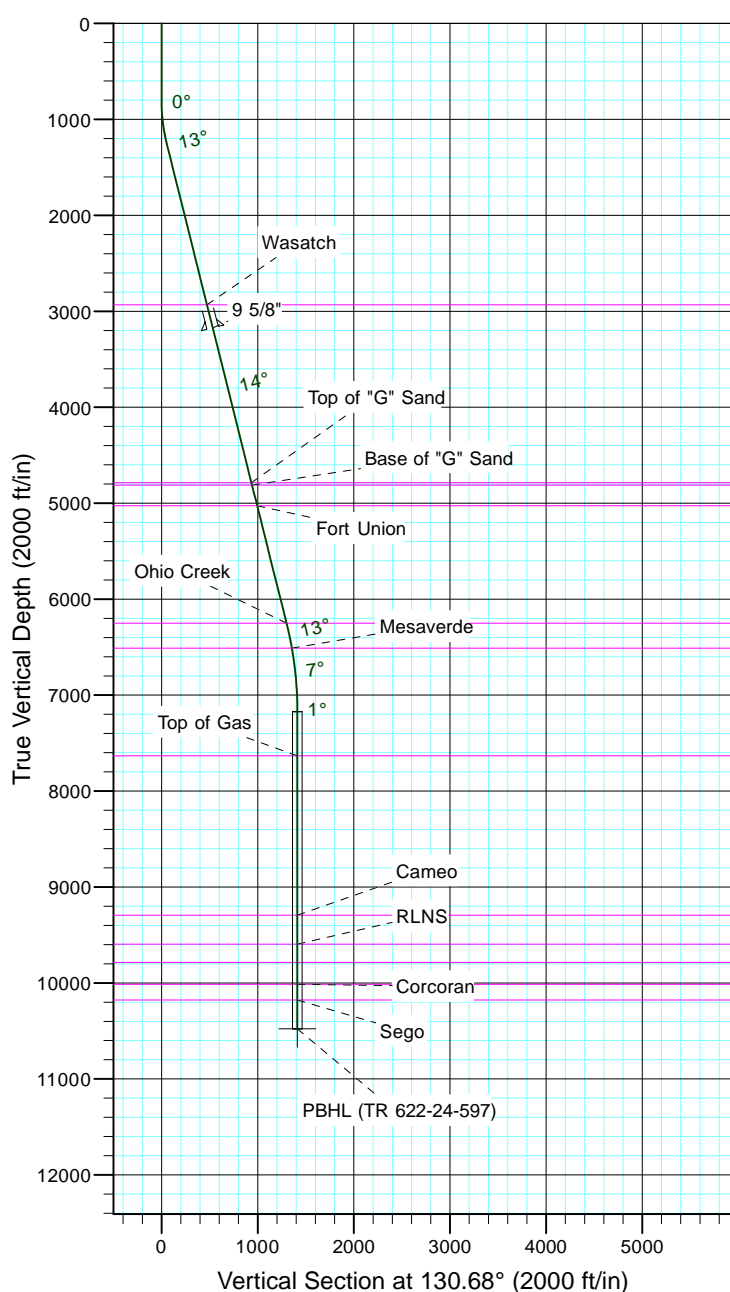
TEP Rocky Mountain LLC

Project: Garfield County, CO NAD83
 Site: TR 1-24-597 Pad
 Well: TR 622-24-597
 Wellbore: OH
 Design: Plan #1



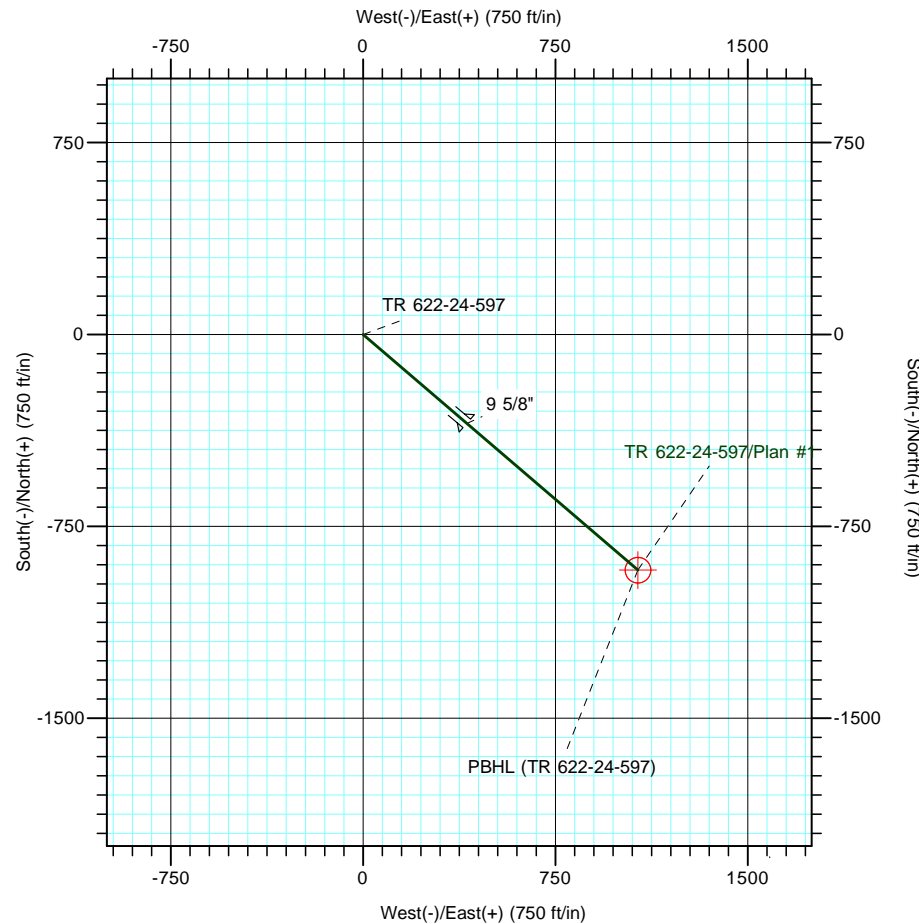
Azimuths to True North
 Magnetic North: 11.57°

Magnetic Field
 Strength: 53050.6snT
 Dip Angle: 66.03°
 Date: 12/31/2004
 Model: IGRF2000



CASING DETAILS			
TVD	MD	Name	Size
3174.8	3238.0	9 5/8"	9.625

FORMATION TOP DETAILS		
TVDPath	MDPath	Formation
2932.0	2987.8	Wasatch
4787.0	4899.6	Top of "G" Sand
4813.0	4926.3	Base of "G" Sand
5027.0	5146.9	Fort Union
6251.0	6408.4	Ohio Creek
6511.0	6674.2	Mesaverde
7632.0	7798.6	Top of Gas
9295.0	9461.6	Cameo
9596.0	9762.6	RLNS
9786.0	9952.6	Cozzette
10015.0	10181.6	Corcoran
10178.0	10344.6	Sego



DESIGN TARGET DETAILS							
Name	TVD	+N/-S	+E/-W	Northing	Easting	Latitude	Longitude
PBHL (TR 622-24-597)	10478.0	-921.4	1072.1	1654281.10	2231588.60	39° 35' 53.222 N	108° 13' 38.313 W

SECTION DETAILS										
Sec	MD	Inc	Azi	TVD	+N/-S	+E/-W	Dleg	TFace	VSect	Target
1	0.0	0.00	0.00	0.0	0.0	0.0	0.00	0.00	0.0	
2	800.0	0.00	0.00	800.0	0.0	0.0	0.00	0.00	0.0	
3	1266.7	14.00	130.68	1262.1	-37.0	43.0	3.00	130.68	56.7	
4	6406.2	14.00	130.68	6248.9	-847.4	986.0	0.00	0.00	1300.1	
5	7339.6	0.00	0.00	7173.0	-921.4	1072.1	1.50	180.00	1413.6	
6	10644.6	0.00	0.00	10478.0	-921.4	1072.1	0.00	0.00	1413.6	PBHL (TR 622-24-597)