

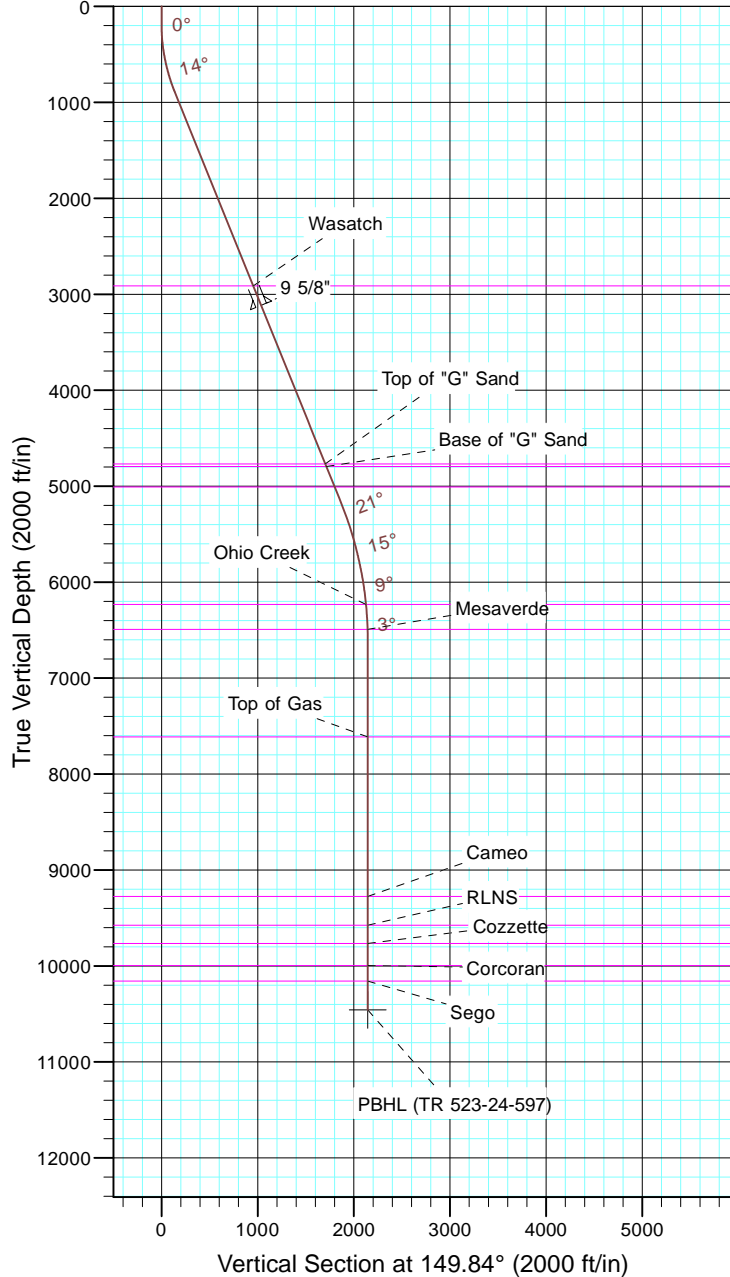
TEP Rocky Mountain LLC

Project: Garfield County, CO NAD83
 Site: TR 1-24-597 Pad
 Well: TR 523-24-597
 Wellbore: OH
 Design: Plan #1



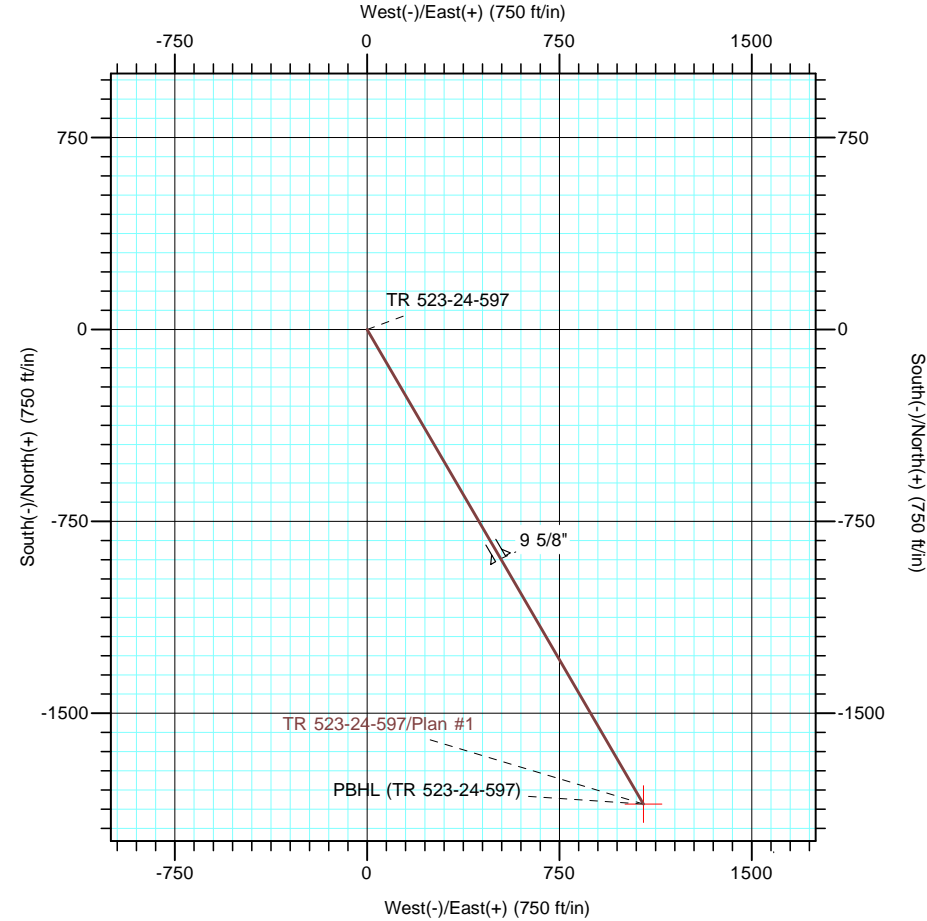
Azimuths to True North
 Magnetic North: 11.57°

Magnetic Field
 Strength: 53050.6snT
 Dip Angle: 66.03°
 Date: 12/31/2004
 Model: IGRF2000



CASING DETAILS			
TVD	MD	Name	Size
3117.6	3310.0	9 5/8"	9.625

FORMATION TOP DETAILS			
TVDPath	MDPath	Formation	
2913.0	3089.4	Wasatch	
4768.0	5090.0	Top of "G" Sand	
4794.0	5118.1	Base of "G" Sand	
5008.0	5348.9	Fort Union	
6232.0	6621.0	Ohio Creek	
6492.0	6881.5	Mesaverde	
7613.0	8002.6	Top of Gas	
9276.0	9665.6	Cameo	
9577.0	9966.6	RLNS	
9767.0	10156.6	Cozzette	
9996.0	10385.6	Corcoran	
10159.0	10548.6	Segó	



DESIGN TARGET DETAILS							
Name	TVD	+N/-S	+E/-W	Northing	Easting	Latitude	Longitude
PBHL (TR 523-24-597)	10459.0	-1854.7	1077.8	1653330.10	2231564.40	39° 35' 43.820 N	108° 13' 38.258 W

SECTION DETAILS										
Sec	MD	Inc	Azi	TVD	+N/-S	+E/-W	Dleg	TFace	VSect	Target
1	0.0	0.00	0.00	0.0	0.0	0.0	0.00	0.00	0.0	
2	180.0	0.00	0.00	180.0	0.0	0.0	0.00	0.00	0.0	
3	913.4	22.00	149.84	895.5	-120.3	69.9	3.00	149.84	139.1	
4	5525.8	22.00	149.84	5172.0	-1614.2	938.1	0.00	0.00	1867.0	
5	6992.6	0.00	0.00	6603.0	-1854.7	1077.8	1.50	180.00	2145.2	
6	10848.6	0.00	0.00	10459.0	-1854.7	1077.8	0.00	0.00	2145.2	PBHL (TR 523-24-597)