

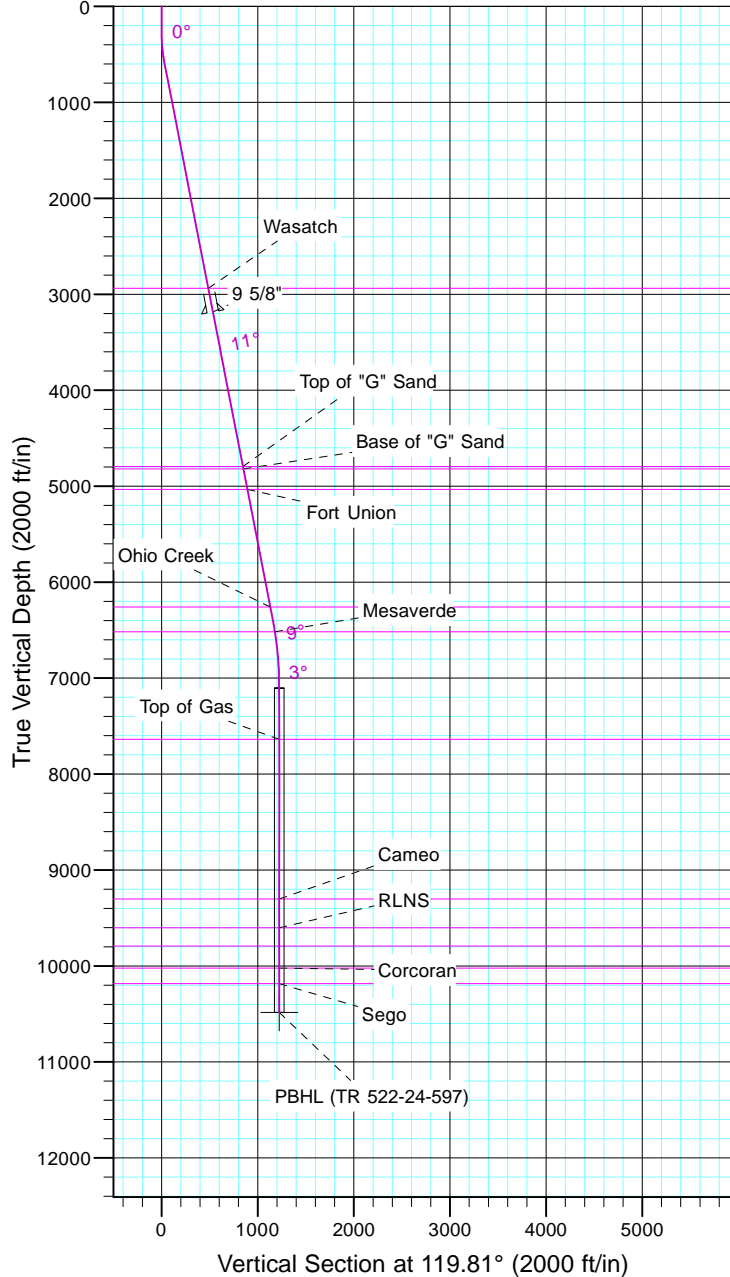
TEP Rocky Mountain LLC

Project: Garfield County, CO NAD83
 Site: TR 1-24-597 Pad
 Well: TR 522-24-597
 Wellbore: OH
 Design: Plan #1



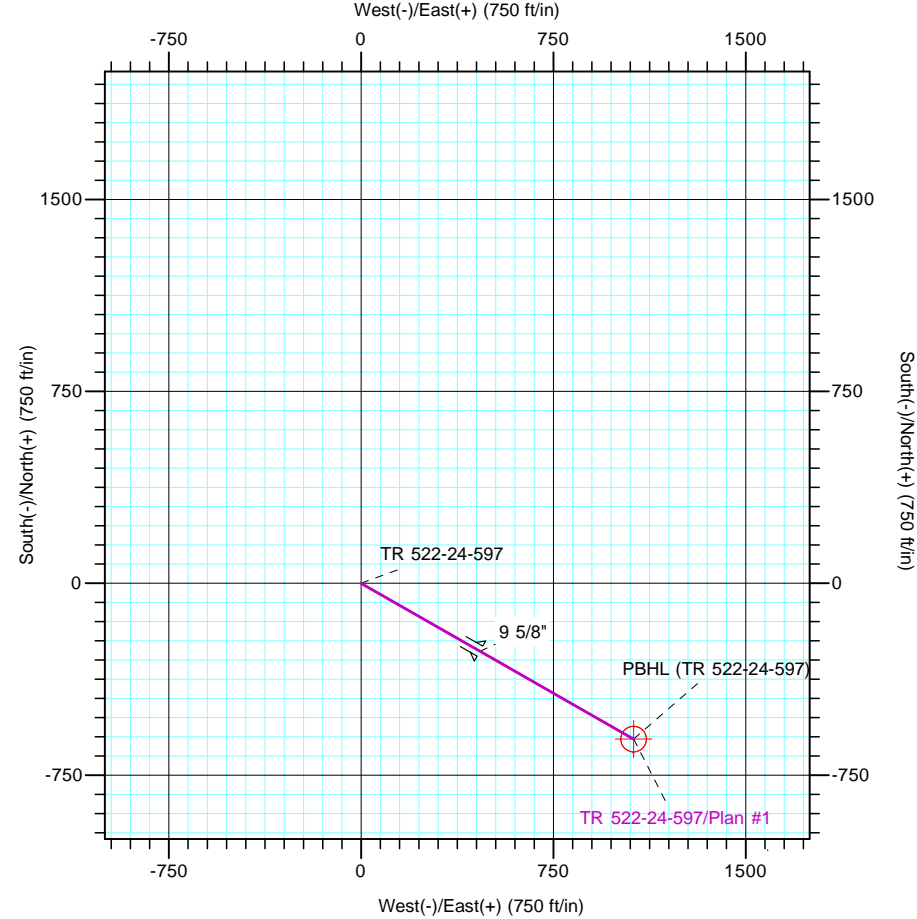
Azimuths to True North
 Magnetic North: 11.57°

Magnetic Field
 Strength: 53050.6snT
 Dip Angle: 66.03°
 Date: 12/31/2004
 Model: IGRF2000



CASING DETAILS			
TVD	MD	Name	Size
3184.7	3235.0	9 5/8"	9.625

FORMATION TOP DETAILS		
TVDPath	MDPath	Formation
2939.0	2984.7	Wasatch
4794.0	4874.4	Top of "G" Sand
4820.0	4900.9	Base of "G" Sand
5034.0	5118.9	Fort Union
6258.0	6365.8	Ohio Creek
6518.0	6630.2	Mesaverde
7639.0	7753.5	Top of Gas
9302.0	9416.5	Cameo
9603.0	9717.5	RLNS
9793.0	9907.5	Cozzette
10022.0	10136.5	Corcoran
10185.0	10299.5	Segó



DESIGN TARGET DETAILS							
Name	TVD	+N/-S	+E/-W	Northing	Easting	Latitude	Longitude
PBHL (TR 522-24-597)	10485.0	-608.9	1062.8	1654587.30	2231596.40	39° 35' 56.249 N	108° 13' 38.331 W

SECTION DETAILS										
Sec	MD	Inc	Azi	TVD	+N/-S	+E/-W	Dleg	TFace	VSect	Target
1	0.0	0.00	0.00	0.0	0.0	0.0	0.00	0.00	0.0	
2	250.0	0.00	0.00	250.0	0.0	0.0	0.00	0.00	0.0	
3	616.5	11.00	119.81	614.3	-17.4	30.4	3.00	119.81	35.1	
4	6486.4	11.00	119.81	6376.4	-574.1	1001.9	0.00	0.00	1154.7	
5	7219.5	0.00	0.00	7105.0	-608.9	1062.8	1.50	180.00	1224.9	
6	10599.5	0.00	0.00	10485.0	-608.9	1062.8	0.00	0.00	1224.9	PBHL (TR 522-24-597)