

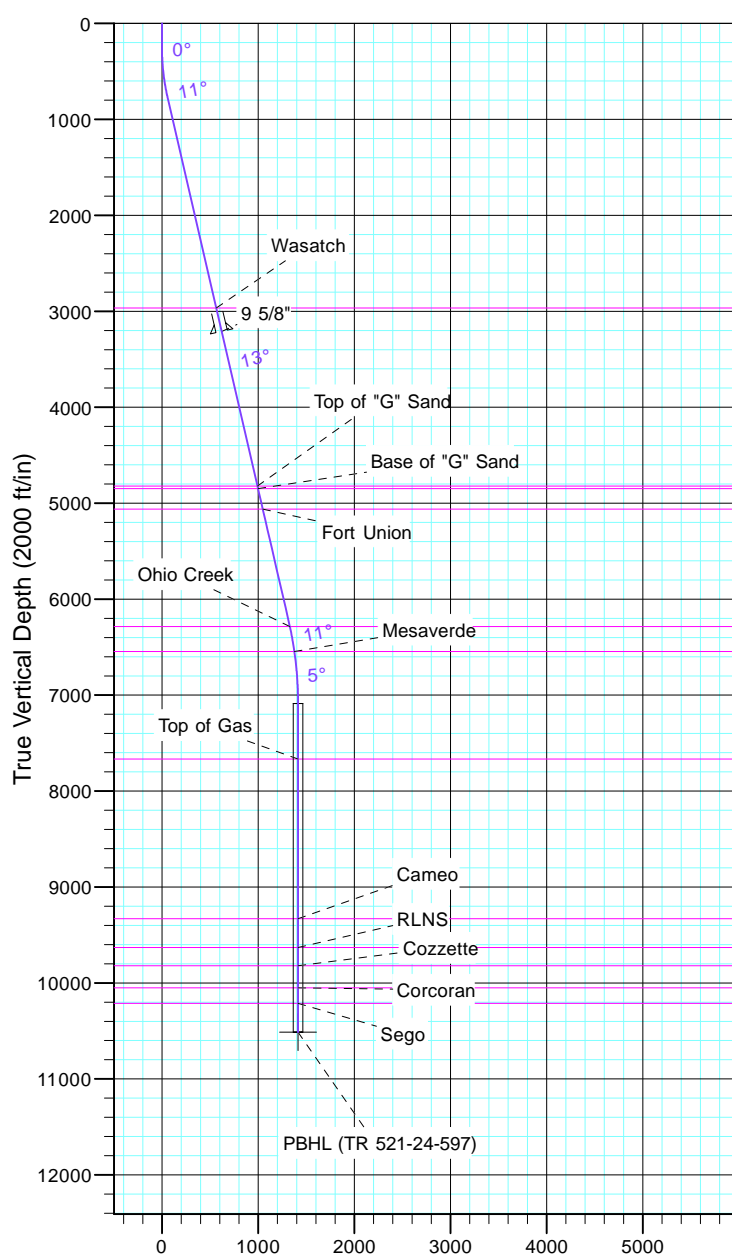
TEP Rocky Mountain LLC

Project: Garfield County, CO NAD83
 Site: TR 1-24-597 Pad
 Well: TR 521-24-597
 Wellbore: OH
 Design: Plan #1



Azimuths to True North
 Magnetic North: 11.57°

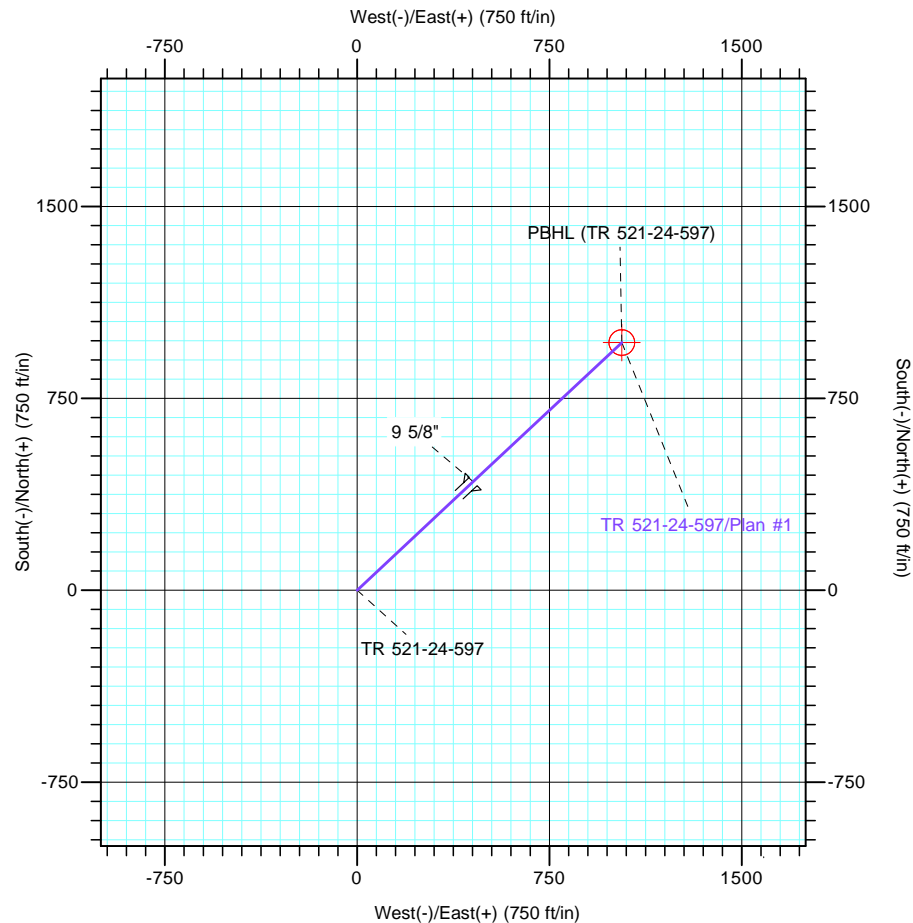
Magnetic Field
 Strength: 53050.7snT
 Dip Angle: 66.03°
 Date: 12/31/2004
 Model: IGRF2000



Vertical Section at 46.83° (2000 ft/in)

CASING DETAILS			
TVD	MD	Name	Size
3210.5	3279.0	9 5/8"	9.625

FORMATION TOP DETAILS			
TVDPath	MDPath	Formation	
2967.0	3029.1	Wasatch	
4822.0	4932.9	Top of "G" Sand	
4848.0	4959.5	Base of "G" Sand	
5062.0	5179.2	Fort Union	
6286.0	6435.2	Ohio Creek	
6546.0	6699.4	Mesaverde	
7667.0	7822.3	Top of Gas	
9330.0	9485.3	Cameo	
9631.0	9786.3	RLNS	
9821.0	9976.3	Cozzette	
10050.0	10205.3	Corcoran	
10213.0	10368.3	Segó	



DESIGN TARGET DETAILS									
Name	TVD	+N/-S	+E/-W	Northing	Easting	Latitude	Longitude		
PBHL (TR 521-24-597)	10513.0	968.3	1032.4	1656193.60	2231637.30	39° 36' 12.130 N	108° 13' 38.425 W		

SECTION DETAILS										
Sec	MD	Inc	Azi	TVD	+N/-S	+E/-W	Dleg	TFace	VSect	Target
1	0.0	0.00	0.00	0.0	0.0	0.0	0.00	0.00	0.0	
2	260.0	0.00	0.00	260.0	0.0	0.0	0.00	0.00	0.0	
3	779.9	13.00	46.83	775.5	40.2	42.8	2.50	46.83	58.7	
4	6376.7	13.00	46.83	6228.9	901.3	961.0	0.00	0.00	1317.5	
5	7243.3	0.00	0.00	7088.0	968.3	1032.4	1.50	180.00	1415.4	
6	10668.3	0.00	0.00	10513.0	968.3	1032.4	0.00	0.00	1415.4	PBHL (TR 521-24-597)