

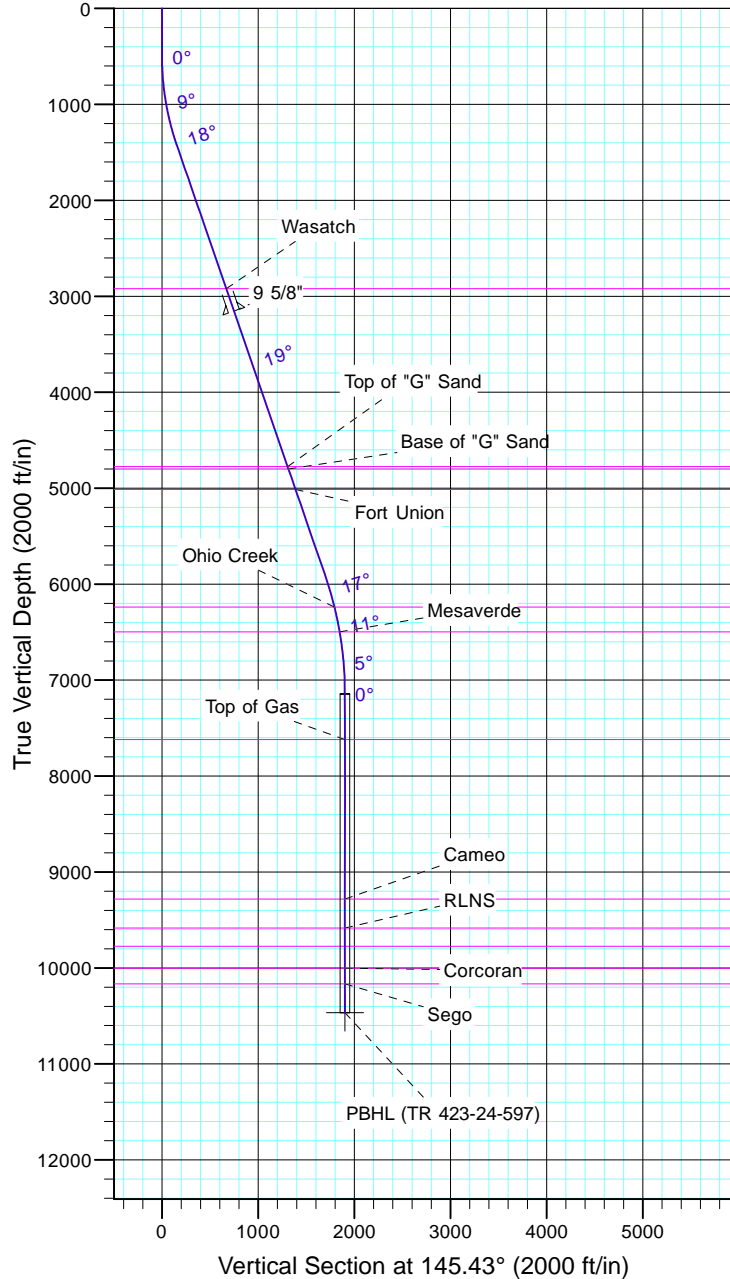
# TEP Rocky Mountain LLC

Project: Garfield County, CO NAD83  
 Site: TR 1-24-597 Pad  
 Well: TR 423-24-597  
 Wellbore: OH  
 Design: Plan #1



Azimuths to True North  
 Magnetic North: 11.57°

Magnetic Field  
 Strength: 53050.6nT  
 Dip Angle: 66.03°  
 Date: 12/31/2004  
 Model: IGRF2000

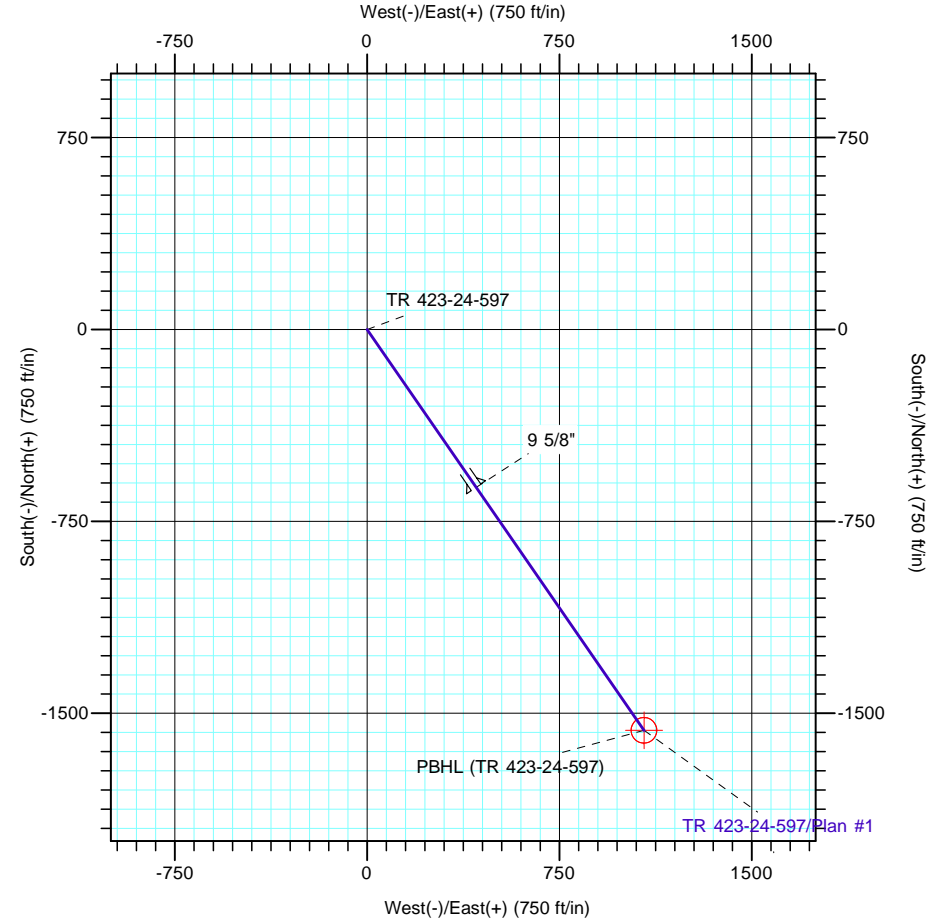


CASING DETAILS

TVD	MD	Name	Size
3156.4	3273.0	9 5/8"	9.625

FORMATION TOP DETAILS

TVDPath	MDPath	Formation
2920.0	3023.0	Wasatch
4775.0	4984.9	Top of "G" Sand
4801.0	5012.4	Base of "G" Sand
5015.0	5238.7	Fort Union
6239.0	6528.1	Ohio Creek
6499.0	6793.7	Mesaverde
7620.0	7917.9	Top of Gas
9283.0	9580.9	Cameo
9584.0	9881.9	RLNS
9774.0	10071.9	Cozzette
10003.0	10300.9	Corcoran
10166.0	10463.9	Sego



DESIGN TARGET DETAILS

Name	TVD	+N/-S	+E/-W	Northing	Easting	Latitude	Longitude
PBHL (TR 423-24-597)	10466.0	-1566.8	1079.8	1653630.00	2231572.10	39° 35' 46.785 N	108° 13' 38.274 W

SECTION DETAILS

Sec	MD	Inc	Azi	TVD	+N/-S	+E/-W	Dleg	TFace	VSect	Target
1	0.0	0.00	0.00	0.0	0.0	0.0	0.00	0.00	0.0	
2	500.0	0.00	0.00	500.0	0.0	0.0	0.00	0.00	0.0	
3	1449.9	19.00	145.43	1432.6	-128.5	88.6	2.00	145.43	156.1	
4	6176.3	19.00	145.43	5901.5	-1395.4	961.7	0.00	0.00	1694.7	
5	7442.9	0.00	0.00	7145.0	-1566.8	1079.8	1.50	180.00	1902.8	
6	10763.9	0.00	0.00	10466.0	-1566.8	1079.8	0.00	0.00	1902.8	PBHL (TR 423-24-597)