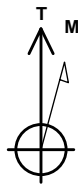


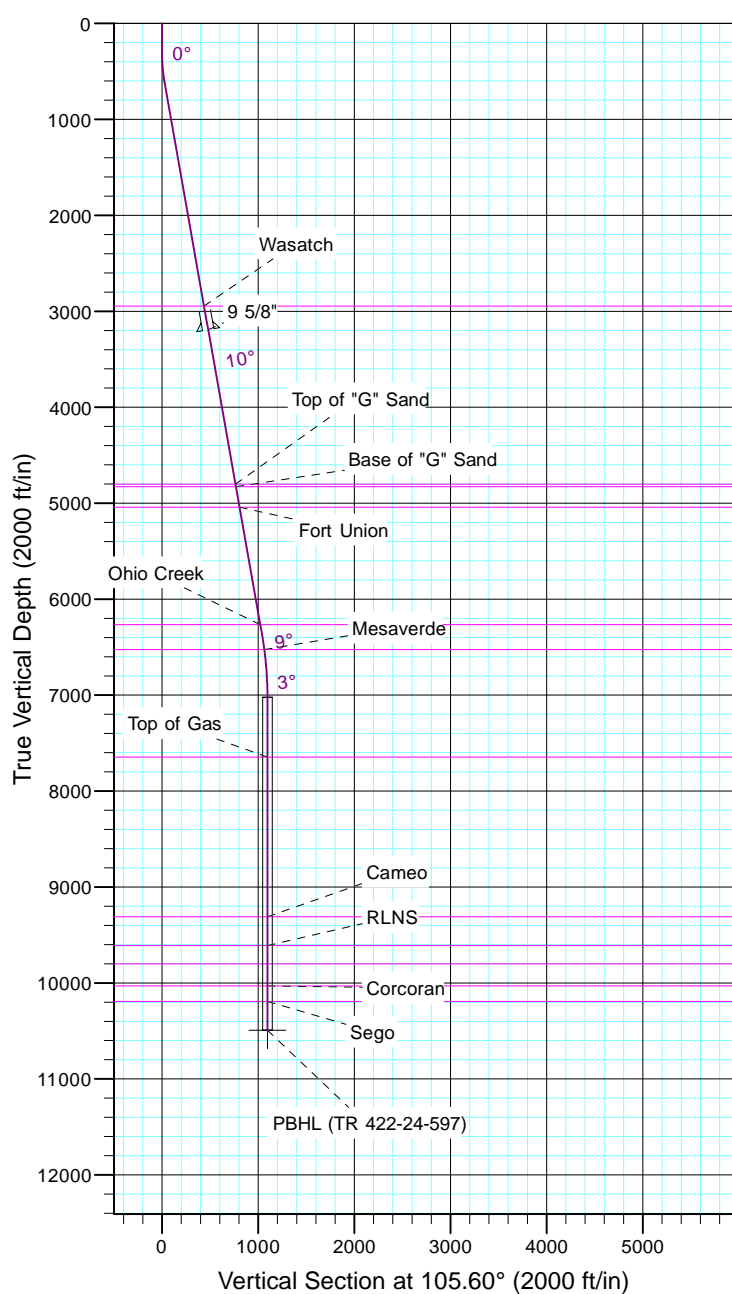
# TEP Rocky Mountain LLC

Project: Garfield County, CO NAD83  
 Site: TR 1-24-597 Pad  
 Well: TR 422-24-597  
 Wellbore: OH  
 Design: Plan #1



Azimuths to True North  
 Magnetic North: 11.57°

Magnetic Field  
 Strength: 53050.6snT  
 Dip Angle: 66.03°  
 Date: 12/31/2004  
 Model: IGRF2000

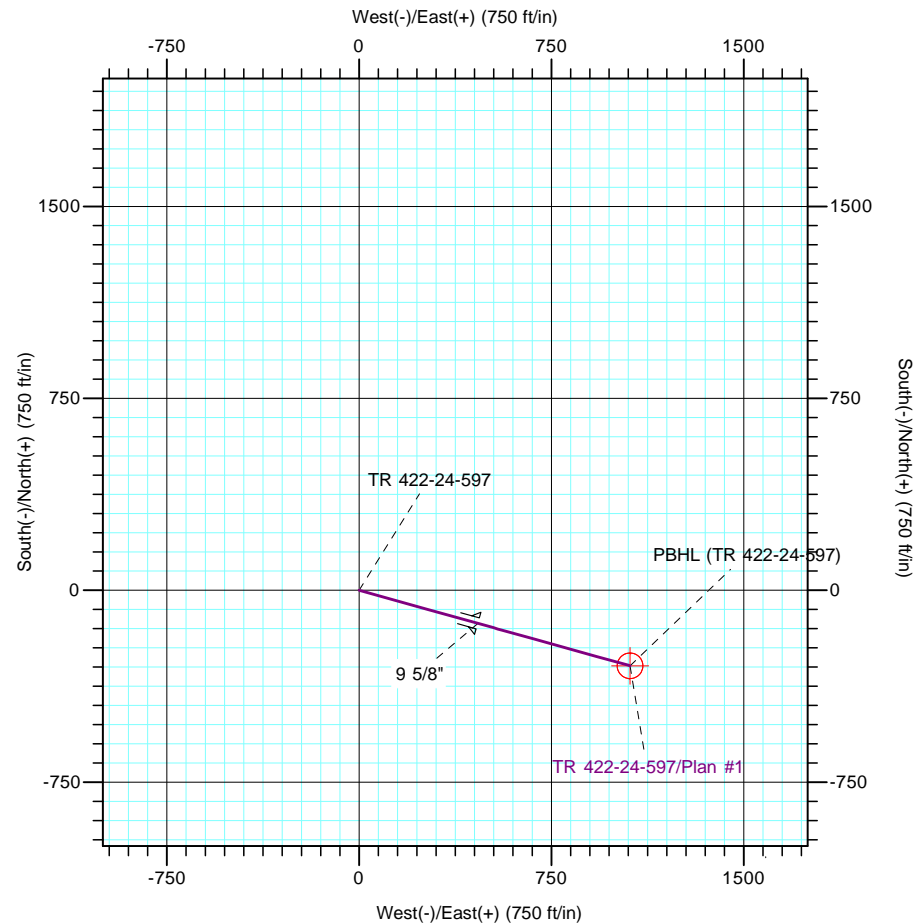


CASING DETAILS

TVD	MD	Name	Size
3192.8	3234.0	9 5/8"	9.625

FORMATION TOP DETAILS

TVDPath	MDPath	Formation
2947.0	2984.4	Wasatch
4802.0	4868.0	Top of "G" Sand
4828.0	4894.4	Base of "G" Sand
5042.0	5111.7	Fort Union
6266.0	6354.6	Ohio Creek
6526.0	6618.0	Mesaverde
7647.0	7740.4	Top of Gas
9310.0	9403.4	Cameo
9611.0	9704.4	RLNS
9801.0	9894.4	Cozzette
10030.0	10123.4	Corcoran
10193.0	10286.4	Sego



DESIGN TARGET DETAILS

Name	TVD	+N/-S	+E/-W	Northing	Easting	Latitude	Longitude
PBHL (TR 422-24-597)	10493.0	-295.1	1056.6	1654907.00	2231604.50	39° 35' 59.410 N	108° 13' 38.350 W

SECTION DETAILS

Sec	MD	Inc	Azi	TVD	+N/-S	+E/-W	Dleg	TFace	VSect	Target
1	0.0	0.00	0.00	0.0	0.0	0.0	0.00	0.00	0.0	
2	300.0	0.00	0.00	300.0	0.0	0.0	0.00	0.00	0.0	
3	633.3	10.00	105.60	631.6	-7.8	27.9	3.00	105.60	29.0	
4	6449.8	10.00	105.60	6359.7	-279.5	1000.8	0.00	0.00	1039.0	
5	7116.4	0.00	0.00	7023.0	-295.1	1056.6	1.50	180.00	1097.1	
6	10586.4	0.00	0.00	10493.0	-295.1	1056.6	0.00	0.00	1097.1	PBHL (TR 422-24-597)