

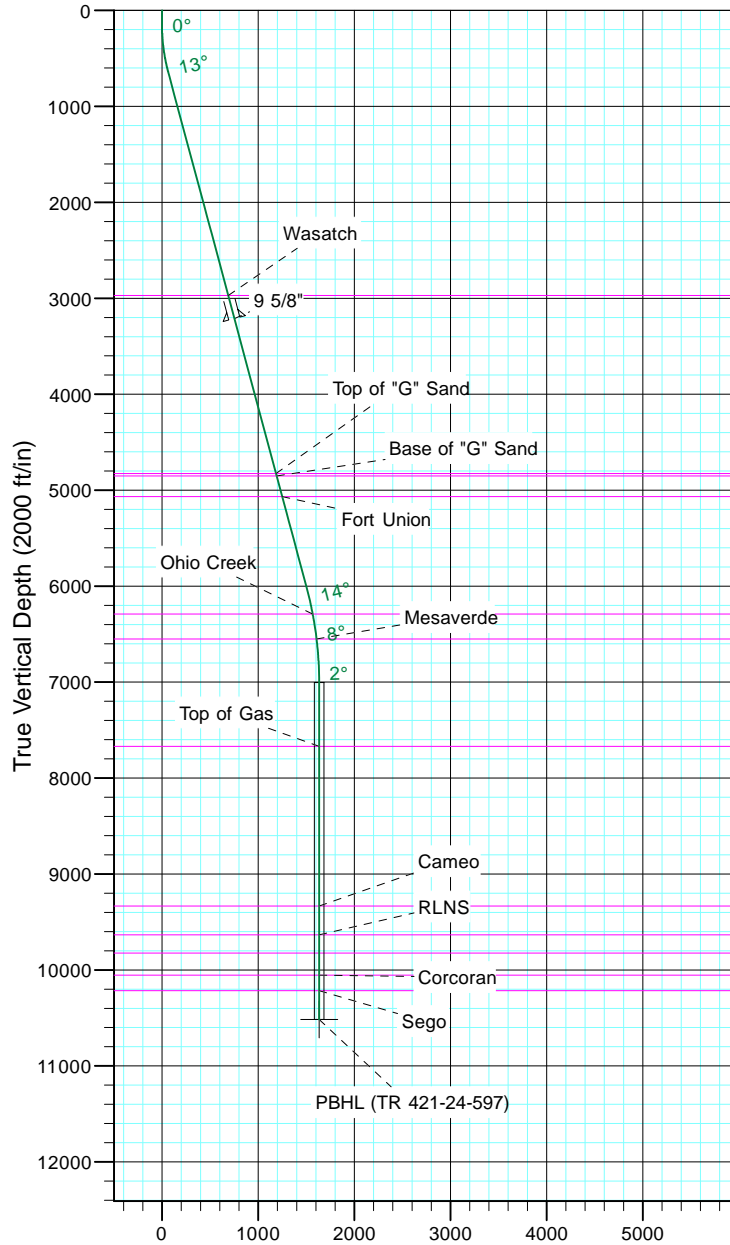
# TEP Rocky Mountain LLC

Project: Garfield County, CO NAD83  
 Site: TR 1-24-597 Pad  
 Well: TR 421-24-597  
 Wellbore: OH  
 Design: Plan #1



Azimuths to True North  
 Magnetic North: 11.57°

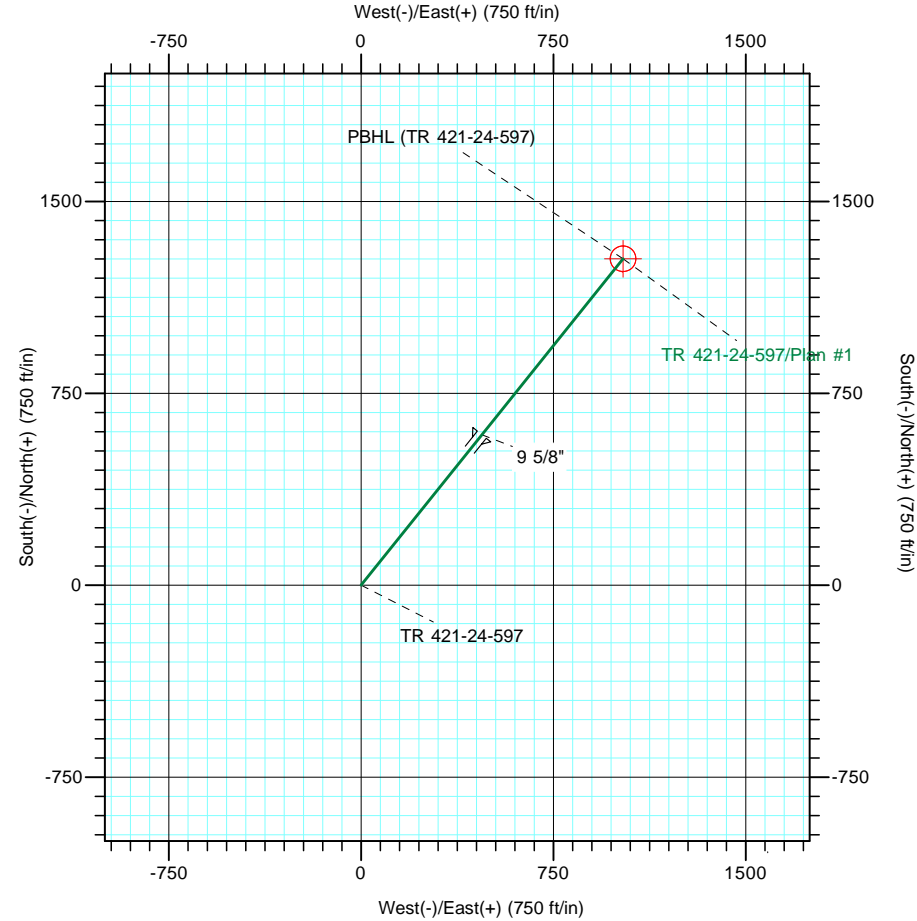
Magnetic Field  
 Strength: 53050.7snT  
 Dip Angle: 66.03°  
 Date: 12/31/2004  
 Model: IGRF2000



Vertical Section at 38.68° (2000 ft/in)

CASING DETAILS			
TVD	MD	Name	Size
3212.7	3309.0	9 5/8"	9.625

FORMATION TOP DETAILS		
TVDPath	MDPath	Formation
2971.0	3058.8	Wasatch
4826.0	4979.3	Top of "G" Sand
4852.0	5006.2	Base of "G" Sand
5066.0	5227.7	Fort Union
6290.0	6492.4	Ohio Creek
6550.0	6755.5	Mesaverde
7671.0	7877.6	Top of Gas
9334.0	9540.6	Cameo
9635.0	9841.6	RLNS
9825.0	10031.6	Cozzette
10054.0	10260.6	Corcoran
10217.0	10423.6	Sego



DESIGN TARGET DETAILS							
Name	TVD	+N/-S	+E/-W	Northing	Easting	Latitude	Longitude
PBHL (TR 421-24-597)	10517.0	1276.1	1021.6	1656513.10	2231645.40	39° 36' 15.288 N	108° 13' 38.444 W

SECTION DETAILS										
Sec	MD	Inc	Azi	TVD	+N/-S	+E/-W	Dleg	TFace	VSect	Target
1	0.0	0.00	0.00	0.0	0.0	0.0	0.00	0.00	0.0	
2	150.0	0.00	0.00	150.0	0.0	0.0	0.00	0.00	0.0	
3	650.1	15.00	38.68	644.4	50.8	40.7	3.00	38.68	65.1	
4	6210.4	15.00	38.68	6015.2	1174.4	940.2	0.00	0.00	1504.5	
5	7210.6	0.00	0.00	7004.0	1276.1	1021.6	1.50	180.00	1634.6	
6	10723.6	0.00	0.00	10517.0	1276.1	1021.6	0.00	0.00	1634.6	PBHL (TR 421-24-597)