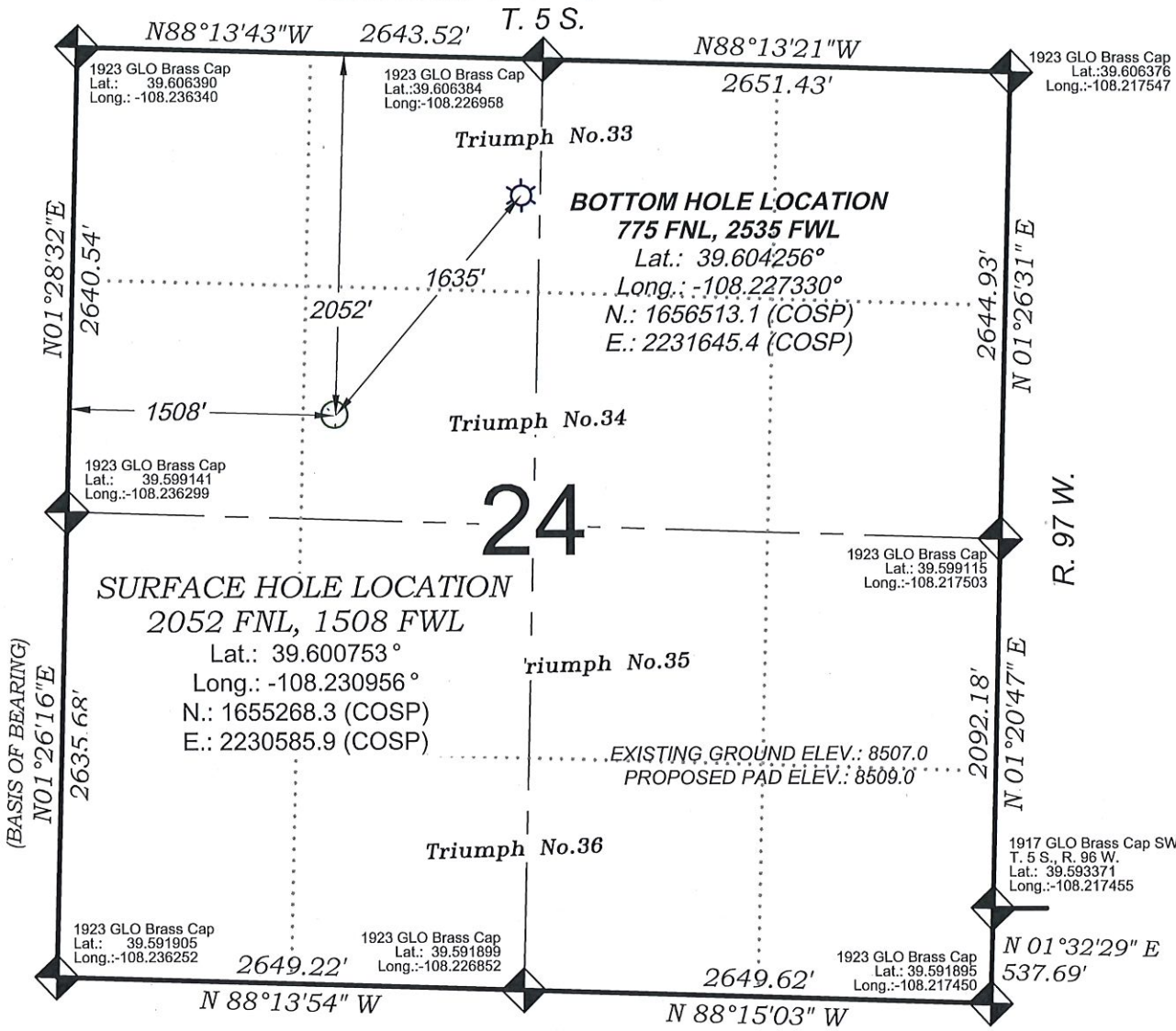


# Chevron TR 421-24-597



**SURFACE HOLE LOCATION**  
 2052 FNL, 1508 FWL  
 Lat.: 39.600753°  
 Long.: -108.230956°  
 N.: 1655268.3 (COSP)  
 E.: 2230585.9 (COSP)

**BOTTOM HOLE LOCATION**  
 775 FNL, 2535 FWL  
 Lat.: 39.604256°  
 Long.: -108.227330°  
 N.: 1656513.1 (COSP)  
 E.: 2231645.4 (COSP)

## 24

SEE CONSTRUCTION LAYOUT PLAT  
 FOR VISIBLE IMPROVEMENTS  
 WITHIN 500' OF THIS LOCATION



### - LEGEND -

- FIELD LOCATED SECTION MONUMENTS AS DESCRIBED
- FIELD SURVEYED WELL LOCATION
- CALCULATED BOTTOM HOLE LOCATION
- CALCULATED SECTION CORNER LOCATION

### SURVEYORS STATEMENT

I, MICHAEL J. LANGHORNE, A REGISTERED LAND SURVEYOR IN THE STATE OF COLORADO DO HEREBY CERTIFY THAT THE SURVEY SHOWN HEREON WAS PREPARED UNDER MY DIRECT SUPERVISION AND HAS BEEN STAKED ON THE GROUND AS SHOWN ON THE PLAT AND CHECKING THAT THIS MAP IS A TRUE REPRESENTATION THEREOF.

*Michael J. Langhorne*  
 36572

MICHAEL J. LANGHORNE, COLORADO REGISTRATION NO. 36572  
 FOR AND ON BEHALF OF  
 BOOKCLIFF SURVEY SERVICES, INC.

### REFERENCES

- 1) INDEPENDENT RE-SURVEY T. 5 S., R. 97 W., 6th P.M (GLO PLAT)
- 2) U.S.G.S. QUAD: Circle Dot Gulch, CO

REVISED: 6/5/17

136 East Third Street  
 Rifle, Colorado  
 81650 Ph. (970)  
 625-2720 Fax (970)  
 625-2773

SURVEY DATE:	10/22/13
MAP DATE:	5/8/17
SCALE:	1" = 1000'
PLAT:	1 of 1
PROJECT:	TEP TR

### WELL LOCATION PLAT Prepared for:

TEP Rocky Mountain LLC  
 SE1/4 NW1/4, SECTION 24  
 T. 5 S., R. 97 W. of the 6th. P.M.  
 GARFIELD COUNTY, COLORADO