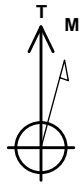


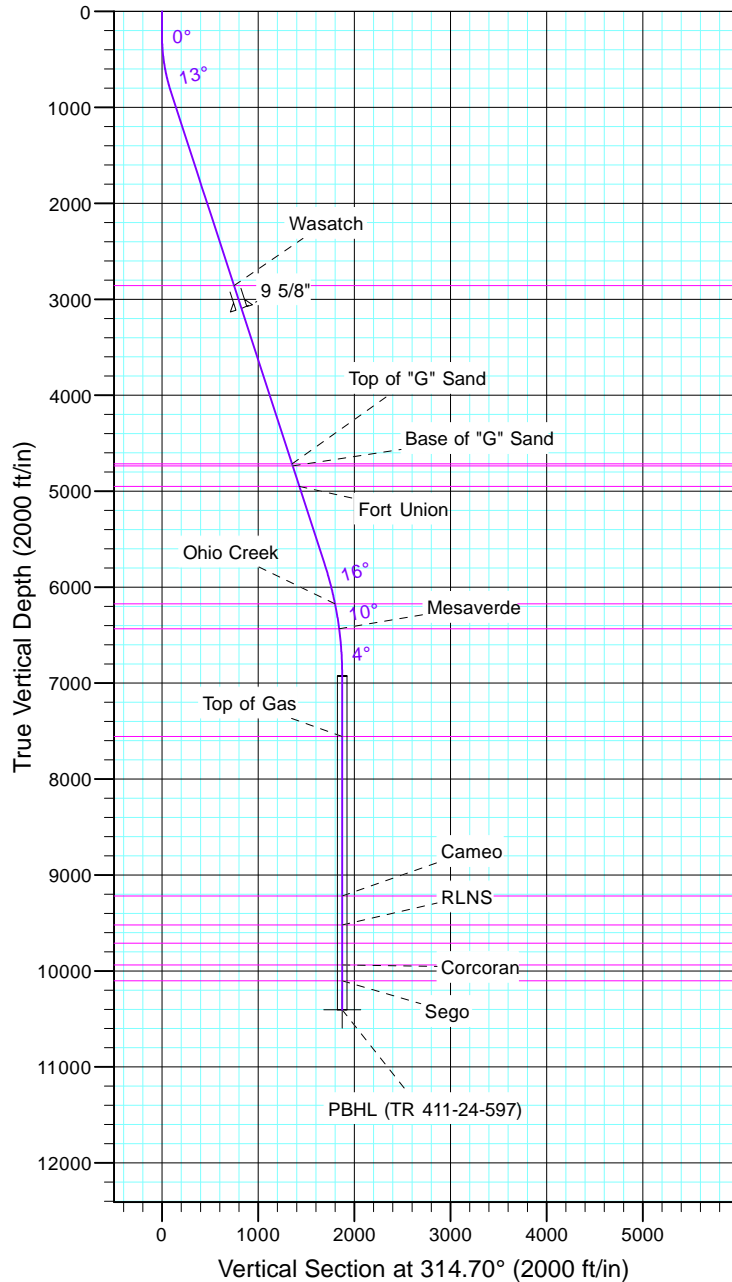
TEP Rocky Mountain LLC

Project: Garfield County, CO NAD83
 Site: TR 1-24-597 Pad
 Well: TR 411-24-597
 Wellbore: OH
 Design: Plan #1



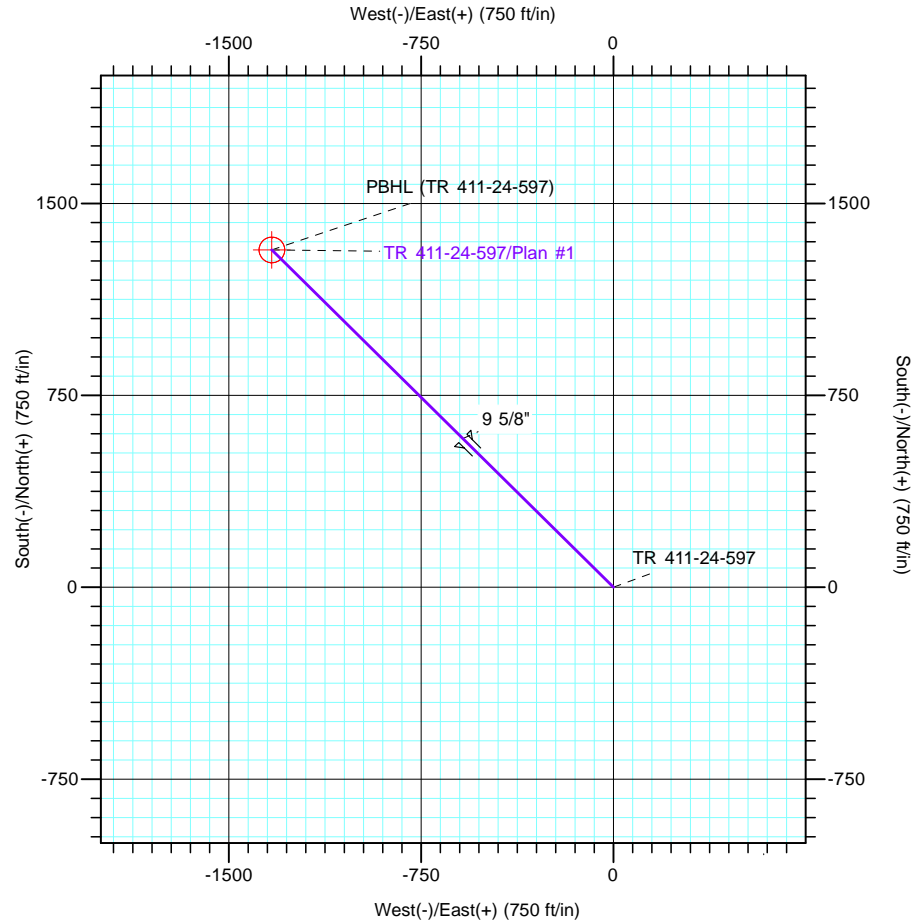
Azimuths to True North
 Magnetic North: 11.57°

Magnetic Field
 Strength: 53050.7snT
 Dip Angle: 66.03°
 Date: 12/31/2004
 Model: IGRF2000



CASING DETAILS			
TVD	MD	Name	Size
3097.0	3223.0	9 5/8"	9.625

FORMATION TOP DETAILS		
TVDPath	MDPath	Formation
2859.0	2972.7	Wasatch
4714.0	4923.2	Top of "G" Sand
4737.0	4947.3	Base of "G" Sand
4951.0	5172.4	Fort Union
6175.0	6452.0	Ohio Creek
6435.0	6715.6	Mesaverde
7556.0	7837.9	Top of Gas
9219.0	9500.9	Cameo
9520.0	9801.9	RLNS
9710.0	9991.9	Cozzette
9939.0	10220.9	Corcoran
10102.0	10383.9	Sego



DESIGN TARGET DETAILS							
Name	TVD	+N/-S	+E/-W	Northing	Easting	Latitude	Longitude
PBHL (TR 411-24-597)	10405.0	1318.4	-1332.5	1656603.70	2229261.90	39° 36' 15.475 N	108° 14' 8.918 W

SECTION DETAILS											
Sec	MD	Inc	Azi	TVD	+N/-S	+E/-W	Dleg	TFace	VSect	Target	
1	0.0	0.00	0.00	0.0	0.0	0.0	0.00	0.00	0.0		
2	250.0	0.00	0.00	250.0	0.0	0.0	0.00	0.00	0.0		
3	850.0	18.00	314.70	840.2	65.7	-66.4	3.00	314.70	93.5		
4	6009.0	18.00	314.70	5746.7	1187.0	-1199.7	0.00	0.00	1687.6		
5	7208.9	0.00	0.00	6927.0	1318.4	-1332.5	1.50	180.00	1874.5		
6	10686.9	0.00	0.00	10405.0	1318.4	-1332.5	0.00	0.00	1874.5	PBHL (TR 411-24-597)	