

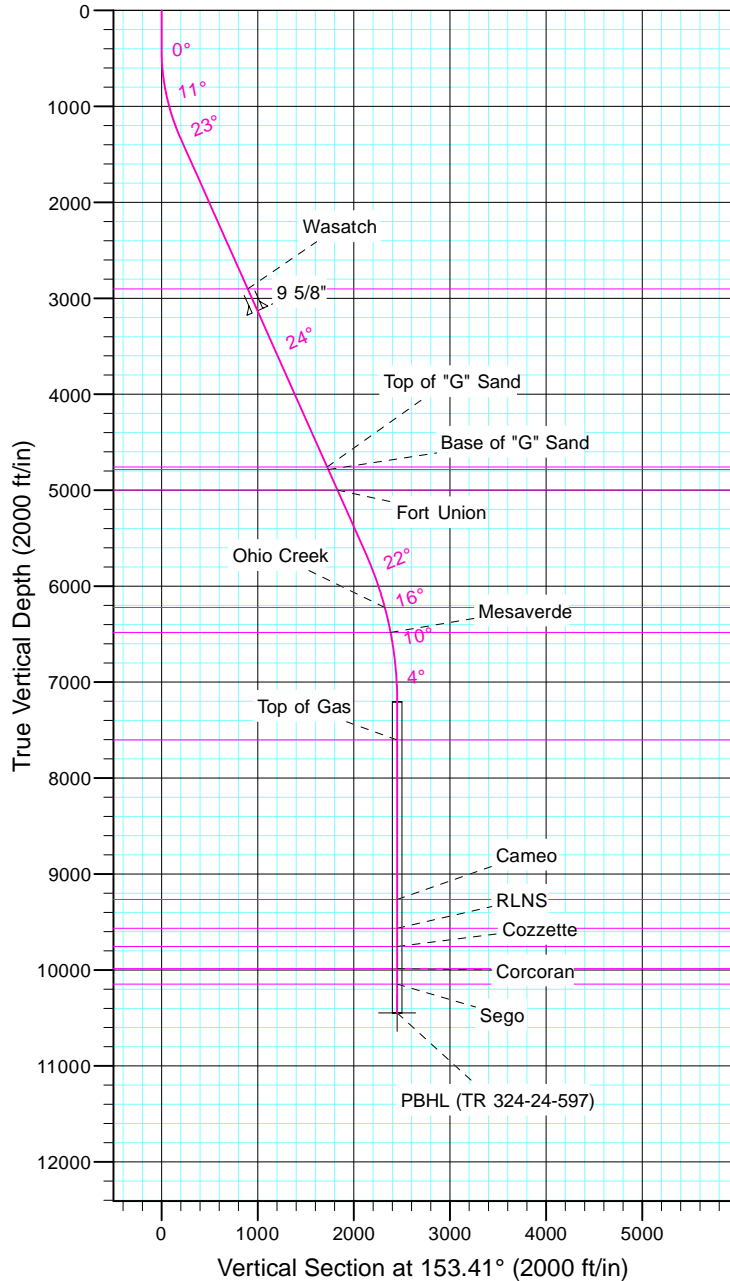
TEP Rocky Mountain LLC

Project: Garfield County, CO NAD83
 Site: TR 1-24-597 Pad
 Well: TR 324-24-597
 Wellbore: OH
 Design: Plan #1



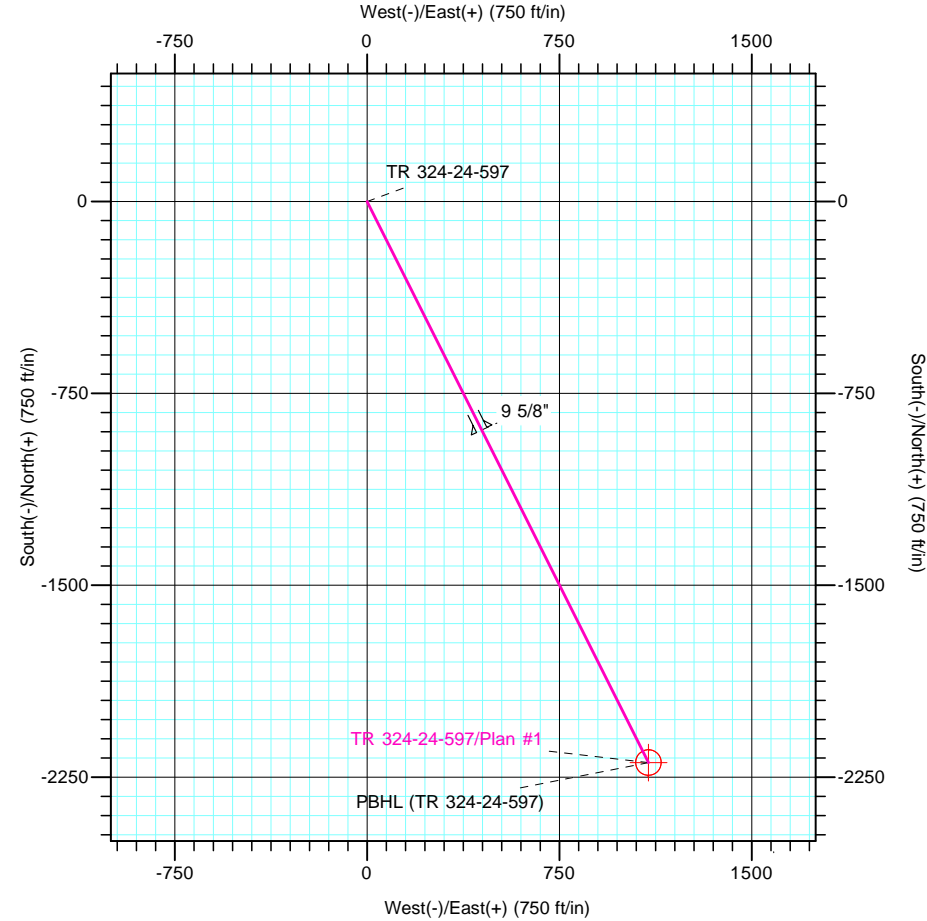
Azimuths to True North
 Magnetic North: 11.57°

Magnetic Field
 Strength: 53050.6snT
 Dip Angle: 66.03°
 Date: 12/31/2004
 Model: IGRF2000



CASING DETAILS			
TVD	MD	Name	Size
3131.0	3329.0	9 5/8"	9.625

FORMATION TOP DETAILS		
TVDPath	MDPath	Formation
2903.0	3079.4	Wasatch
4758.0	5109.9	Top of "G" Sand
4784.0	5138.4	Base of "G" Sand
4998.0	5372.6	Fort Union
6222.0	6693.7	Ohio Creek
6482.0	6960.5	Mesaverde
7603.0	8086.0	Top of Gas
9266.0	9749.0	Cameo
9567.0	10050.0	RLNS
9757.0	10240.0	Cozzette
9986.0	10469.0	Corcoran
10149.0	10632.0	Sego



DESIGN TARGET DETAILS							
Name	TVD	+N/-S	+E/-W	Northing	Easting	Latitude	Longitude
PBHL (TR 324-24-597)	10449.0	-2192.6	1097.3	1652998.10	2231566.00	39° 35' 40.541 N	108° 13' 38.110 W

SECTION DETAILS										
Sec	MD	Inc	Azi	TVD	+N/-S	+E/-W	Dleg	TFace	VSect	Target
1	0.0	0.00	0.00	0.0	0.0	0.0	0.00	0.00	0.0	
2	400.0	0.00	0.00	400.0	0.0	0.0	0.00	0.00	0.0	
3	1359.8	24.00	153.41	1332.0	-177.1	88.6	2.50	153.41	198.1	
4	6090.3	24.00	153.41	5653.7	-1897.4	949.6	0.00	0.00	2121.8	
5	7690.0	0.00	0.00	7207.0	-2192.6	1097.3	1.50	180.00	2451.9	
6	10932.0	0.00	0.00	10449.0	-2192.6	1097.3	0.00	0.00	2451.9	PBHL (TR 324-24-597)