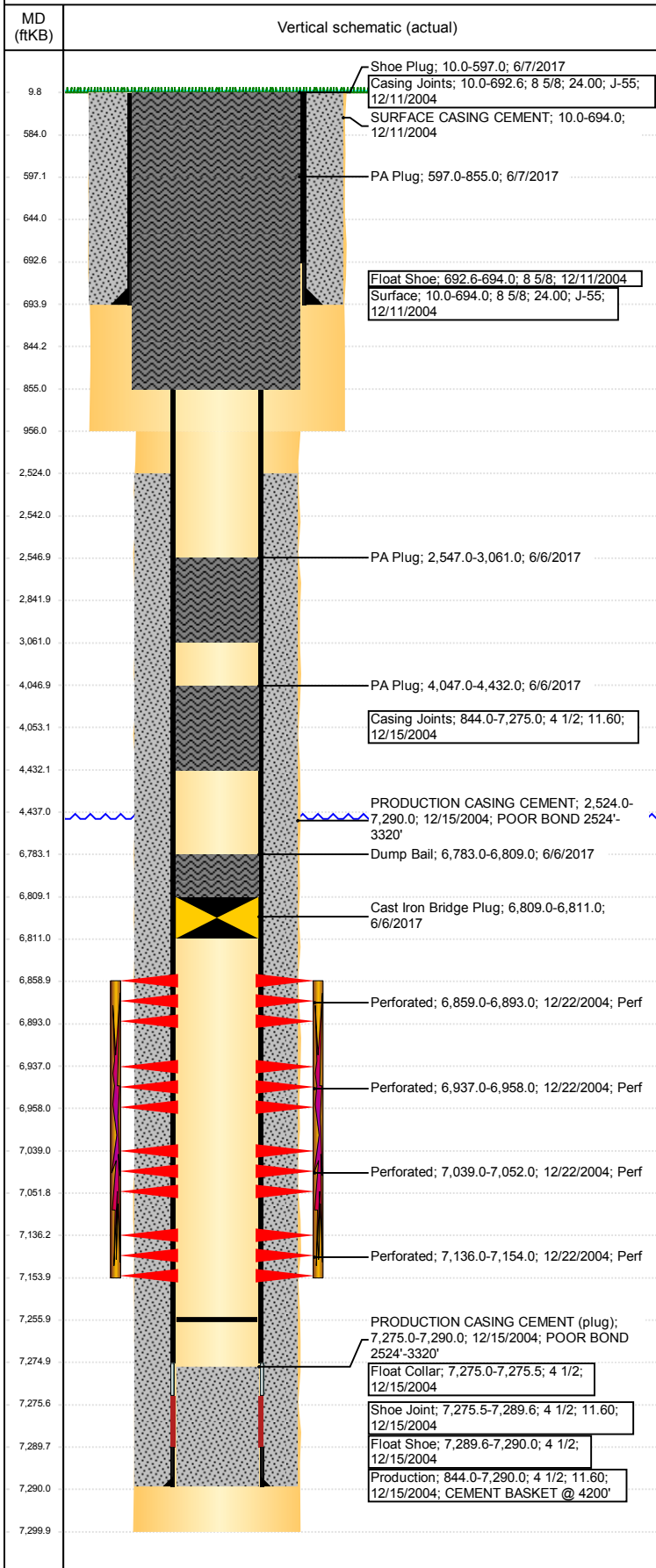


Well Name: KESSLER 19-22

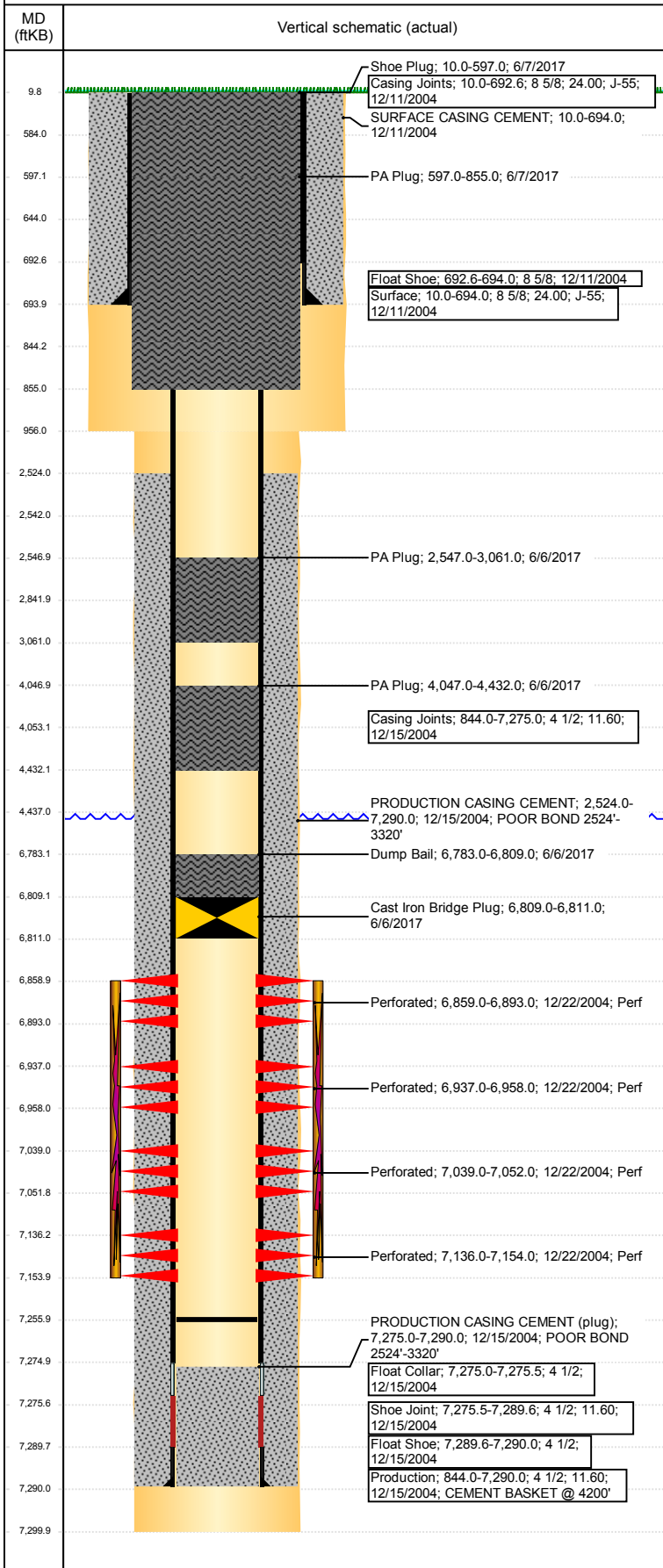
VERTICAL - ORIGINAL HOLE, 6/23/2017 10:55:43 AM



Well Header								
API 05-123-22380	Business Unit DJ BASIN		District 15		Well Config VERTICAL			
Original KB Elevation (ft) 4,800	KB - GL / MSL (ftKB) 10.00		Spud Date 12/10/2004		P & A Date 6/7/2017			
Comment FRAC'D INTO 2008 POOR CEMENT BOND TOC - 3320'								
Directions To Well HWY 392 & RDS 27, WEST 3/4, SOUTH 1/10, WEST TO 2ND WELLHEAD.								
Congressional Location								
Quarter 3 NW	Quarter 4 NW	Section 19	Township 6	Twntshp N/S Dir N	Range 66	Range E/W Dir W		
Bottom Hole Location								
North-South Distance (ft)		From N or S Line		East-West Distance (ft)		From E or W Line		
Plug Back Total Depths								
Date	Depth (ftKB)	Method		Com				
12/15/2004	7,275.0	CASING TALLY		TOP OF FLOAT COLLAR				
12/21/2004	7,220.0	CASED HOLE LOG		DEPTH LOGGER ON CBL				
3/28/2011	7,256.0	TAG		TBG TALLY				
Wellbore Sections								
Section Des		Size (in)		Act Top, MD (ftKB)		Act Btm, MD (ftKB)		
SURFACE		12 1/4		10		956		
PRODUCTION		7 7/8		956		7,300		
Zone Statuses								
Zone Name	Status Date	Status	Fluid Type	Job	Prod Method			
CODELL	1/4/2005	PR	Water	DRILLING/CO...	Flowing			
CODELL	3/29/2011	PR						
CODELL	1/19/2015	PR						
CODELL	6/6/2017	P&A		PLUG AND AB...				
NIOBRARA	1/4/2005	PR	Water	DRILLING/CO...	Flowing			
NIOBRARA	3/29/2011	PR						
NIOBRARA	1/19/2015	PR						
NIOBRARA	6/6/2017	P&A		PLUG AND AB...				
Casing Strings								
Csg Des	Run Date	OD (in)	Wt/Len (lb/ft)	Grade	Top, MD (ftKB)	MD (ftKB)		
Surface	12/11/2004	8 5/8	24.00	J-55	10.0	694.0		
Production	12/15/2004	4 1/2	11.60		10.0	7,290.0		
Cement								
Description SURFACE CASING CEMENT				Top Depth (ftKB) 10.0		Bottom Depth (ftKB) 694.0		
Description PRODUCTION CASING CEMENT				Top Depth (ftKB) 2,524.0		Bottom Depth (ftKB) 7,290.0		
Description Dump Bail				Top Depth (ftKB) 6,783.0		Bottom Depth (ftKB) 6,809.0		
Description PA Plug				Top Depth (ftKB) 4,047.0		Bottom Depth (ftKB) 4,432.0		
Description PA Plug				Top Depth (ftKB) 2,547.0		Bottom Depth (ftKB) 3,061.0		
Description PA Plug				Top Depth (ftKB) 597.0		Bottom Depth (ftKB) 855.0		
Description Shoe Plug				Top Depth (ftKB) 10.0		Bottom Depth (ftKB) 597.0		
Tubing Strings								
Tubing Description Tubing - Production		Run Date 3/28/2011	String... 2 3/8	ID (in) 2.00	Wt (lb/ft) 4.70	Grade J-55	Len (ft) 7,113.64	Set De...
Other In Hole								
Run Date		Des		OD (in)	Top (ftKB)	Btm (ftKB)		
6/6/2017		Cast Iron Bridge Plug		3.99	6,809.0	6,811.0		
Logs								
Date	Type				Top, MD (ftKB)	Btm, MD (ftKB)		
12/16/2004	COMPENSATED DENSITY				3,550.0	7,272.0		
12/16/2004	INDUCTION				688.0	7,292.0		
12/21/2004	CBL/CCL/GR				2,300.0	7,218.0		
5/25/2017	GYRO				0.0	7,100.0		

Well Name: KESSLER 19-22

VERTICAL - ORIGINAL HOLE, 6/23/2017 10:55:44 AM



Perforation Data

Linked Zone	Bnch/St g	Sum of Entered Shot Total	Top (ftKB)	Btm (ftKB)	Date
NIOBRARA, ORIGINAL HOLE	A	0	6,859.00	6,893.00	12/22/2004
NIOBRARA, ORIGINAL HOLE	B	0	6,937.00	6,958.00	12/22/2004
NIOBRARA, ORIGINAL HOLE	C	0	7,039.00	7,052.00	12/22/2004
CODELL, ORIGINAL HOLE		0	7,136.00	7,154.00	12/22/2004
Total (Sum)		0			

Stimulation Intervals

Start Date 12/29/2004	Primary Job Type DRILLING/COMPLETION - ORIGINAL	
Technical Result	Tech Result Details	Tech Result Note
Comment LIMITED ENTRY		