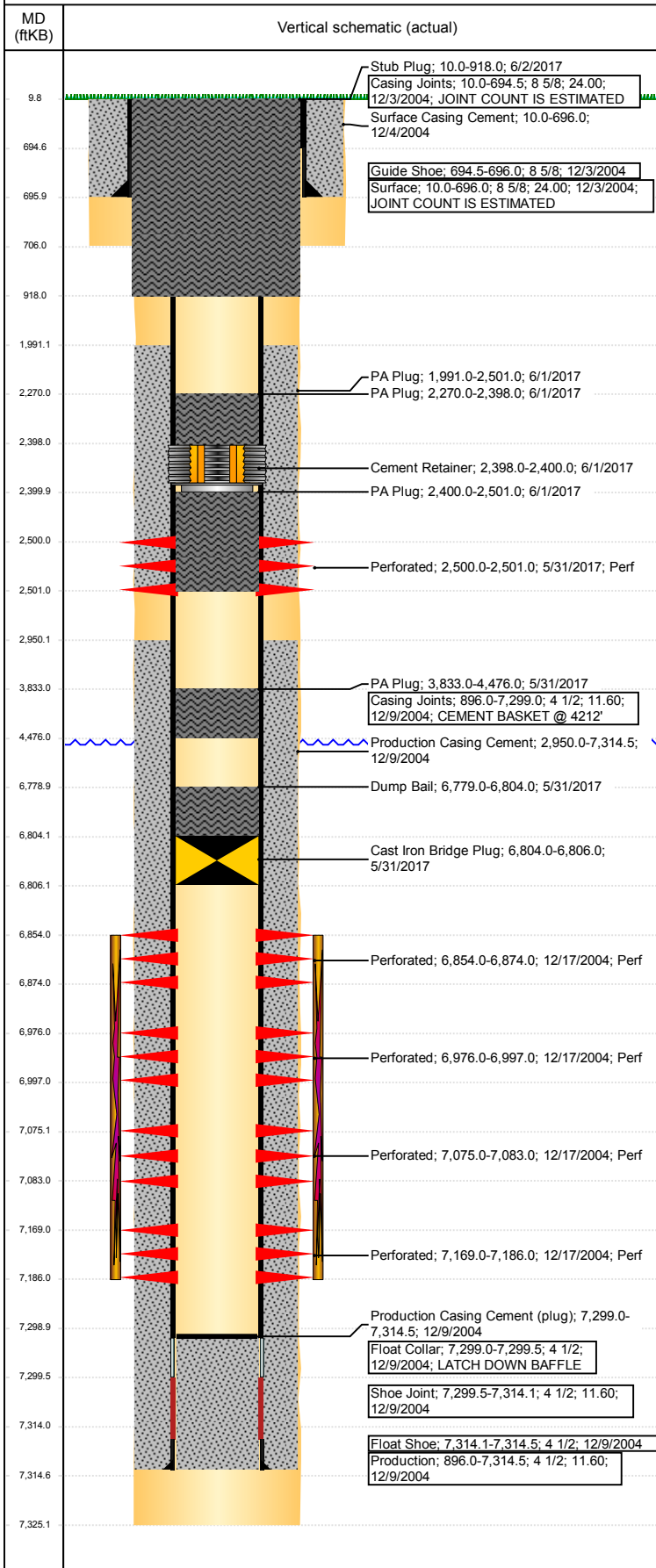


# Wellbore Schematic Input Report

**Well Name: KESSLER 19-21**

VERTICAL - ORIGINAL HOLE, 6/23/2017 10:52:34 AM



## Well Header

API 05-123-22379	Business Unit DJ BASIN	District 15	Well Config VERTICAL
Original KB Elevation (ft) 4,801	KB - GL / MSL (ftKB) 10.00	Spud Date 12/2/2004	P & A Date 6/2/2017

Comment  
CBL N/A IN GREELEY WELL FILE. VERY LITTLE TUBING DETAILS IN WELL FILE.

Directions To Well

## Congressional Location

Quarter 3 NE	Quarter 4 NW	Section 19	Township 6	Twntshp N/S Dir N	Range 66	Range E/W Dir W
-----------------	-----------------	---------------	---------------	----------------------	-------------	--------------------

## Bottom Hole Location

North-South Distance (ft)	From N or S Line	East-West Distance (ft)	From E or W Line
---------------------------	------------------	-------------------------	------------------

## Plug Back Total Depths

Date	Depth (ftKB)	Method	Com
12/9/2004	7,299.0	CASING TALLY	TOP OF LATCH DOWN BAFFLE
12/16/2004	7,281.0	CASED HOLE LOG	DEPTH LOGGER ON CBL
7/22/2005	7,299.0	TAG	MOST RECENT CLEAN OUT

## Wellbore Sections

Section Des	Size (in)	Act Top, MD (ftKB)	Act Btm, MD (ftKB)
SURFACE	12 1/4	10	706
PRODUCTION	7 7/8	706	7,325

## Zone Statuses

Zone Name	Status Date	Status	Fluid Type	Job	Prod Method
NIOBRARA	2/16/2005	PR	Water	DRILLING/CO...	Flowing
NIOBRARA	7/29/2010	PR		PLUG AND AB...	
NIOBRARA	5/31/2017	P&A		DRILLING/CO...	
CODELL	2/16/2005	PR	Water	DRILLING/CO...	Flowing
CODELL	7/29/2010	PR		PLUG AND AB...	
CODELL	5/31/2017	P&A		PLUG AND AB...	

## Casing Strings

Csg Des	Run Date	OD (in)	Wt/Len (lb/ft)	Grade	Top, MD (ftKB)	MD (ftKB)
Surface	12/3/2004	8 5/8	24.00		10.0	696.0
Production	12/9/2004	4 1/2	11.60		10.0	7,314.5

## Cement

Description	Top Depth (ftKB)	Bottom Depth (ftKB)
Surface Casing Cement	10.0	696.0
Production Casing Cement	2,950.0	7,314.5
PA Plug	3,833.0	4,476.0
Dump Bail	6,779.0	6,804.0
PA Plug	2,270.0	2,398.0
PA Plug	2,400.0	2,501.0
PA Plug	1,991.0	2,501.0
Stub Plug	10.0	918.0

## Tubing Strings

Tubing Description	Run Date	String...	ID (in)	Wt (lb/ft)	Grade	Len (ft)	Set De...
Tubing	7/22/2005	2 3/8				7,134.00	

## Other In Hole

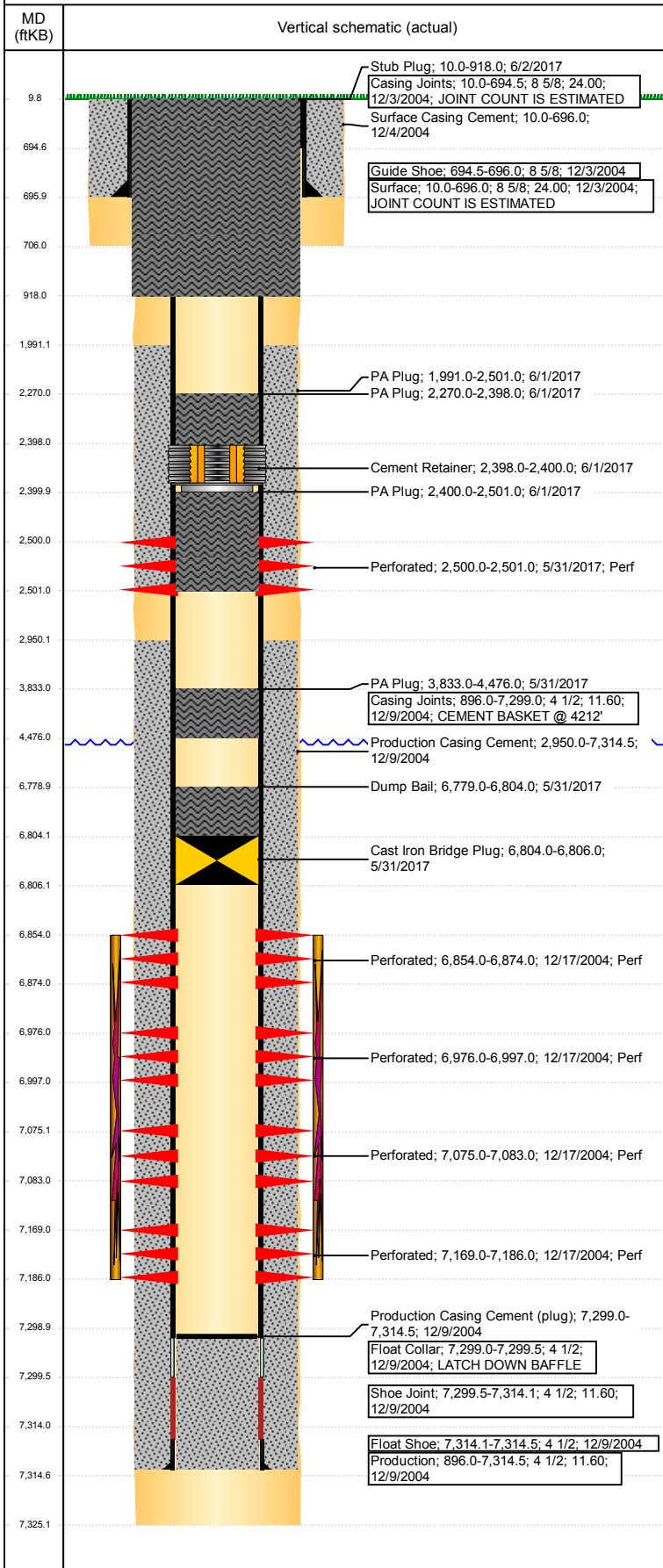
Run Date	Des	OD (in)	Top (ftKB)	Btm (ftKB)
5/31/2017	Cast Iron Bridge Plug	3.99	6,804.0	6,806.0
6/1/2017	Cement Retainer	3.99	2,398.0	2,400.0

## Logs

Date	Type	Top, MD (ftKB)	Btm, MD (ftKB)
12/8/2004	COMPENSATED DENSITY	3,450.0	7,295.0
12/8/2004	INDUCTION	696.0	7,315.0
12/16/2004	CBL/CCL/GR	2,700.0	7,279.0
5/25/2017	GYRO	0.0	7,100.0

**Well Name: KESSLER 19-21**

VERTICAL - ORIGINAL HOLE, 6/23/2017 10:52:35 AM



Perforation Data					
Linked Zone	Bnch/St g	Sum of Entered Shot Total	Top (ftKB)	Btm (ftKB)	Date
NIOBRARA, ORIGINAL HOLE	A	4	2,500.00	2,501.00	5/31/2017
NIOBRARA, ORIGINAL HOLE	B	80	6,854.00	6,874.00	12/17/2004
NIOBRARA, ORIGINAL HOLE	C	21	6,976.00	6,997.00	12/17/2004
NIOBRARA, ORIGINAL HOLE		32	7,075.00	7,083.00	12/17/2004
CODELL, ORIGINAL HOLE		68	7,169.00	7,186.00	12/17/2004
Total (Sum)		205			
Stimulation Intervals					
Start Date 12/22/2004		Primary Job Type DRILLING/COMPLETION - ORIGINAL			
Technical Result		Tech Result Details		Tech Result Note	
Comment LIMITED ENTRY FRAC BROKE CODELL W/1000 GAL 15% HCL					