

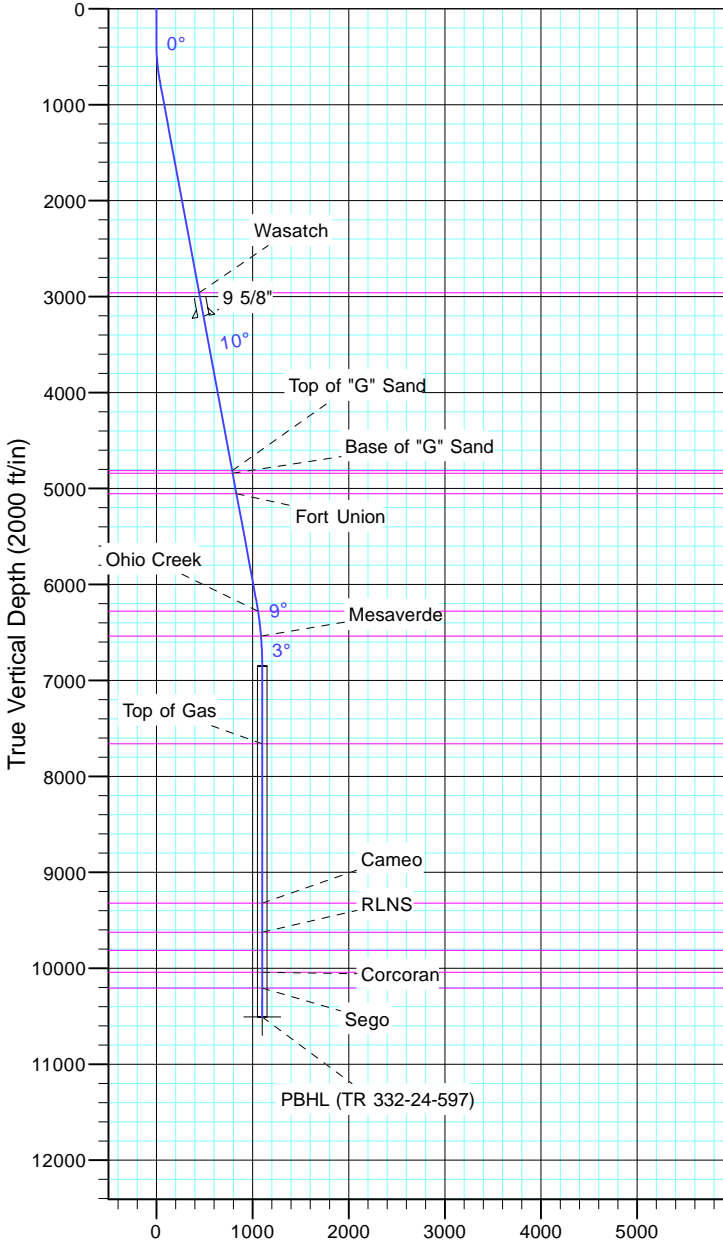
# TEP Rocky Mountain LLC

Project: Garfield County, CO NAD83  
 Site: TR 1-24-597 Pad  
 Well: TR 332-24-597  
 Wellbore: OH  
 Design: Plan #1



Azimuths to True North  
 Magnetic North: 11.57°

Magnetic Field  
 Strength: 53050.7snT  
 Dip Angle: 66.03°  
 Date: 12/31/2004  
 Model: IGRF2000



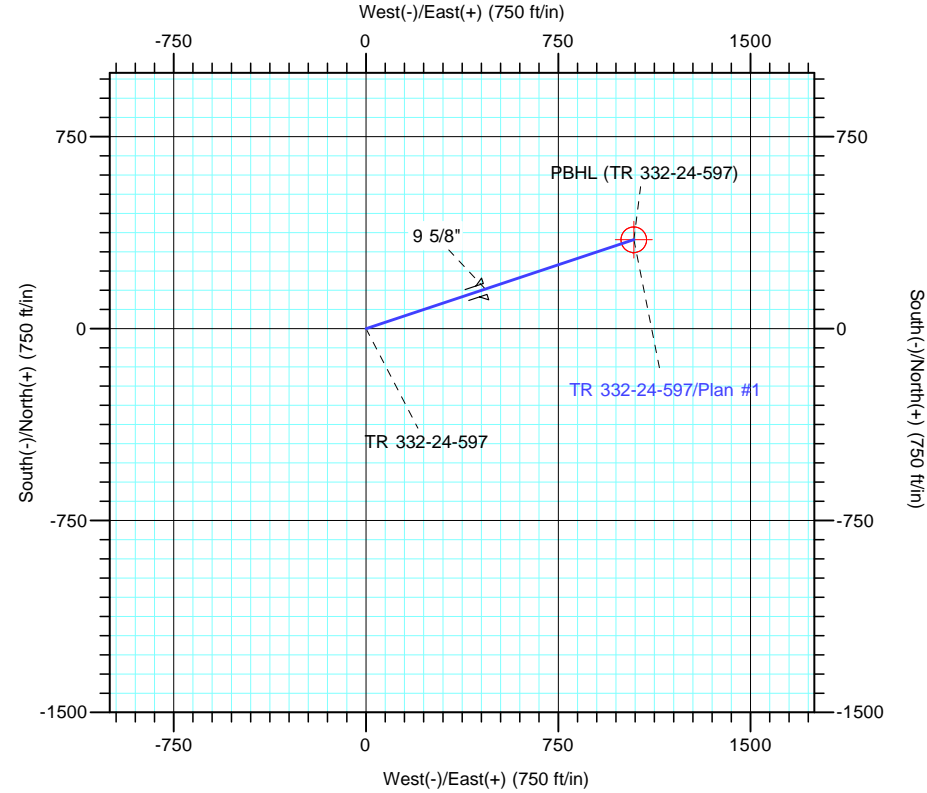
Vertical Section at 71.60° (2000 ft/in)

CASING DETAILS

TVD	MD	Name	Size
3206.1	3250.0	9 5/8"	9.625

FORMATION TOP DETAILS

TVDPath	MDPath	Formation
2960.0	2999.7	Wasatch
4815.0	4886.3	Top of "G" Sand
4841.0	4912.7	Base of "G" Sand
5055.0	5130.4	Fort Union
6279.0	6374.8	Ohio Creek
6539.0	6636.7	Mesaverde
7660.0	7758.0	Top of Gas
9323.0	9421.0	Cameo
9624.0	9722.0	RLNS
9814.0	9912.0	Cozzette
10043.0	10141.0	Corcoran
10206.0	10304.0	Segó



DESIGN TARGET DETAILS

Name	TVD	+N/-S	+E/-W	Northing	Easting	Latitude	Longitude
PBHL (TR 332-24-597)	10506.0	347.5	1044.5	1655561.10	2231621.20	39° 36' 5.877 N	108° 13' 38.388 W

SECTION DETAILS

Sec	MD	Inc	Azi	TVD	+N/-S	+E/-W	Dleg	TFace	VSect	Target
1	0.0	0.00	0.00	0.0	0.0	0.0	0.00	0.00	0.0	
2	350.0	0.00	0.00	350.0	0.0	0.0	0.00	0.00	0.0	
3	770.0	10.50	71.60	767.7	12.1	36.4	2.50	71.60	38.4	
4	6249.0	10.50	71.60	6154.9	327.3	983.8	0.00	0.00	1036.8	
5	6949.0	0.00	0.00	6851.0	347.5	1044.5	1.50	180.00	1100.8	
6	10604.0	0.00	0.00	10506.0	347.5	1044.5	0.00	0.00	1100.8	PBHL (TR 332-24-597)