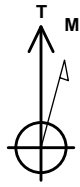


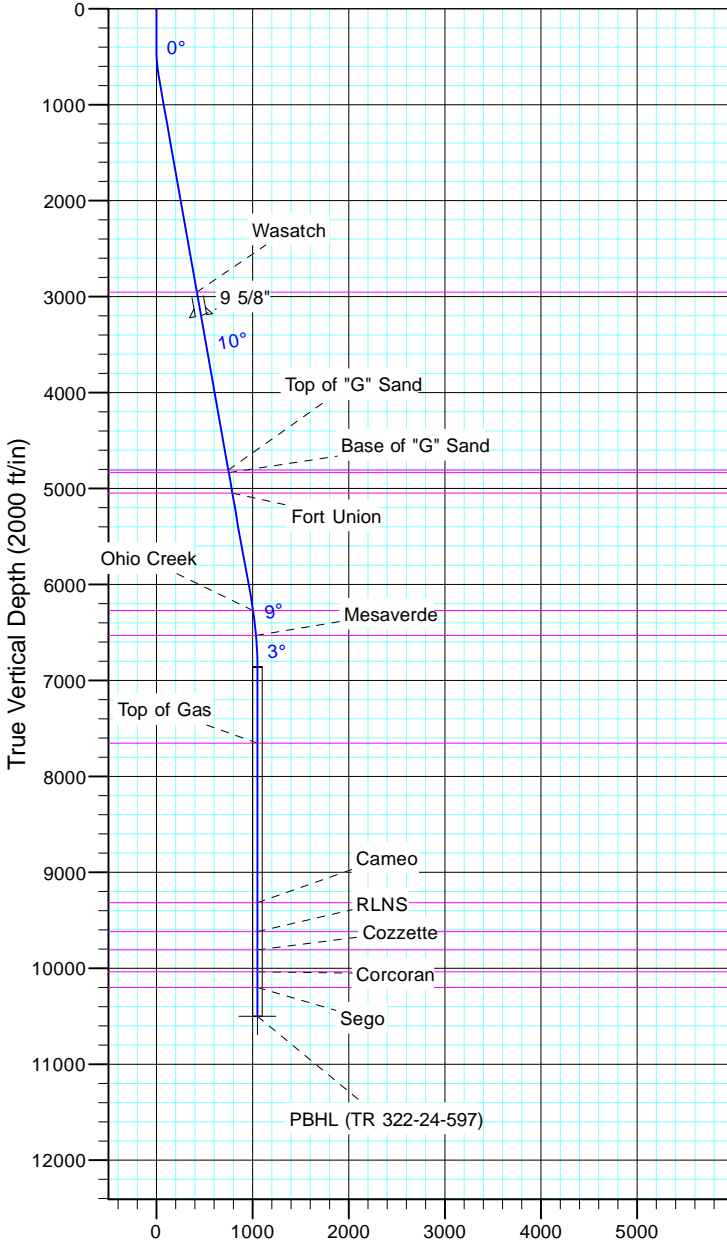
# TEP Rocky Mountain LLC

Project: Garfield County, CO NAD83  
 Site: TR 1-24-597 Pad  
 Well: TR 322-24-597  
 Wellbore: OH  
 Design: Plan #1



Azimuths to True North  
 Magnetic North: 11.57°

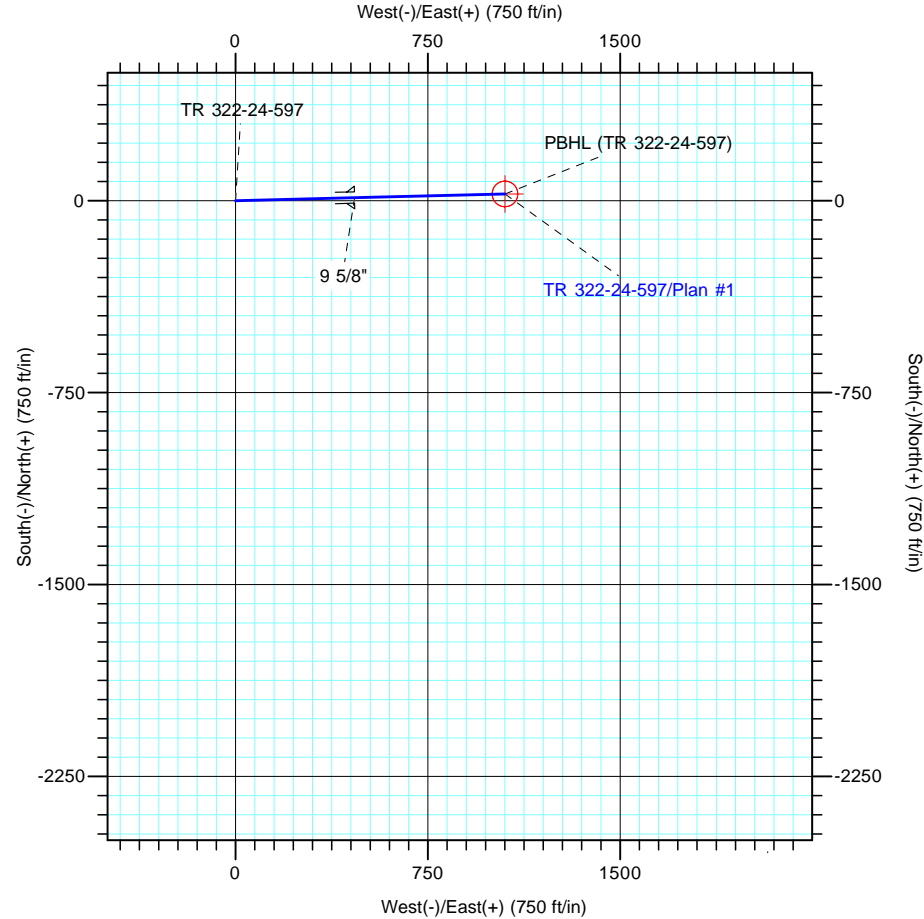
Magnetic Field  
 Strength: 53050.7snT  
 Dip Angle: 66.03°  
 Date: 12/31/2004  
 Model: IGRF2000



Vertical Section at 88.55° (2000 ft/in)

CASING DETAILS			
TVD	MD	Name	Size
3200.2	3240.0	9 5/8"	9.625

FORMATION TOP DETAILS		
TVDPath	MDPath	Formation
2954.0	2990.0	Wasatch
4809.0	4873.6	Top of "G" Sand
4835.0	4900.0	Base of "G" Sand
5049.0	5117.3	Fort Union
6273.0	6360.1	Ohio Creek
6533.0	6622.0	Mesaverde
7654.0	7743.4	Top of Gas
9317.0	9406.4	Cameo
9618.0	9707.4	RLNS
9808.0	9897.4	Cozzette
10037.0	10126.4	Corcoran
10200.0	10289.4	Sego



DESIGN TARGET DETAILS							
Name	TVD	+N/-S	+E/-W	Northing	Easting	Latitude	Longitude
PBHL (TR 322-24-597)	10500.0	26.6	1050.7	1655234.50	2231612.90	39° 36' 2.648 N	108° 13' 38.369 W

SECTION DETAILS										
Sec	MD	Inc	Azi	TVD	+N/-S	+E/-W	Dleg	TFace	VSect	Target
1	0.0	0.00	0.00	0.0	0.0	0.0	0.00	0.00	0.0	
2	400.0	0.00	0.00	400.0	0.0	0.0	0.00	0.00	0.0	
3	733.4	10.00	88.55	731.8	0.7	29.0	3.00	88.55	29.0	
4	6282.5	10.00	88.55	6196.5	25.1	992.6	0.00	0.00	992.9	
5	6949.4	0.00	0.00	6860.0	26.6	1050.7	1.50	180.00	1051.0	
6	10589.4	0.00	0.00	10500.0	26.6	1050.7	0.00	0.00	1051.0	PBHL (TR 322-24-597)