

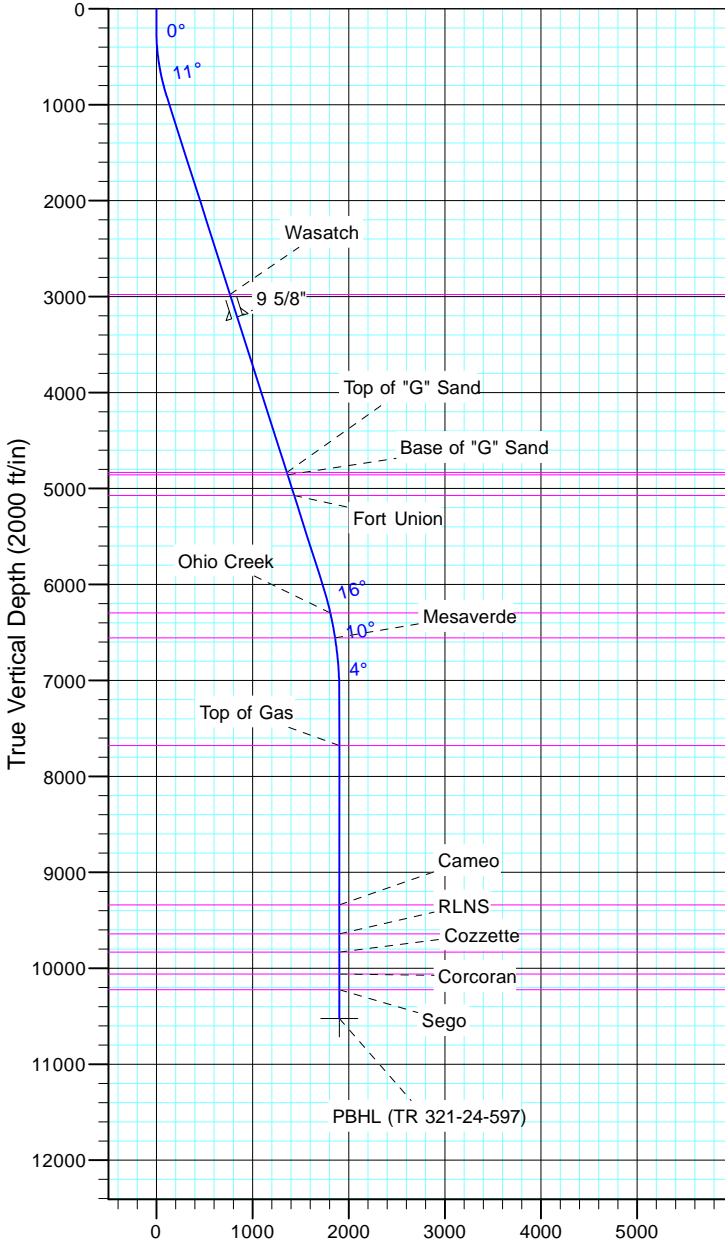
TEP Rocky Mountain LLC

Project: Garfield County, CO NAD83
 Site: TR 1-24-597 Pad
 Well: TR 321-24-597
 Wellbore: OH
 Design: Plan #1



Azimuths to True North
 Magnetic North: 11.57°

Magnetic Field
 Strength: 53050.7snT
 Dip Angle: 66.03°
 Date: 12/31/2004
 Model: IGRF2000



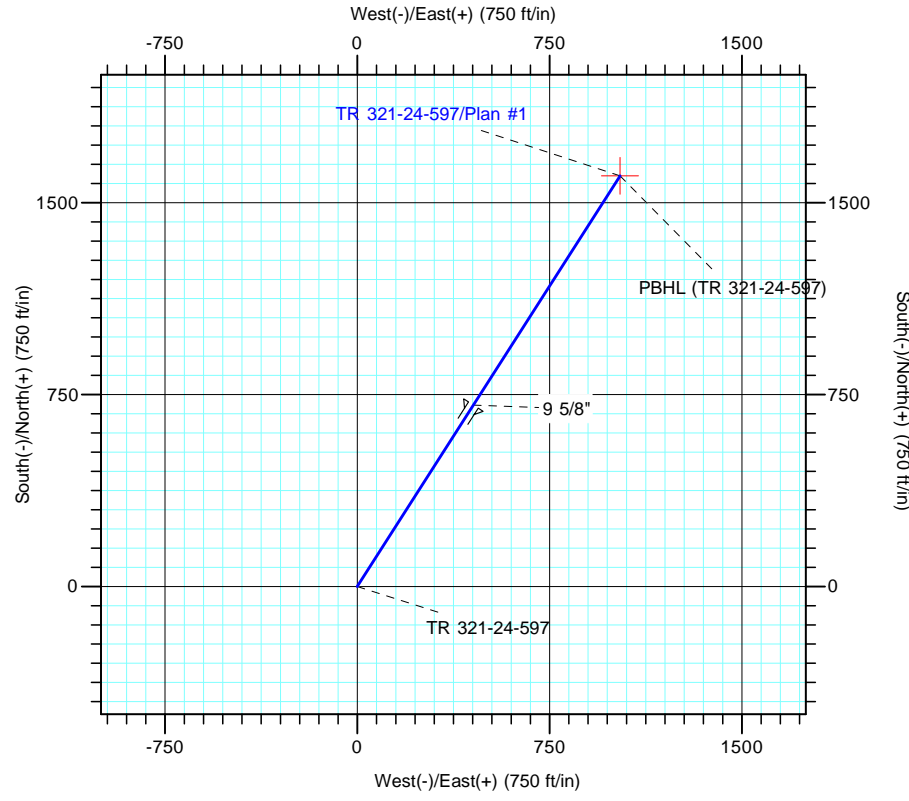
Vertical Section at 32.56° (2000 ft/in)

CASING DETAILS

TVD	MD	Name	Size
3215.9	3341.0	9 5/8"	9.625

FORMATION TOP DETAILS

TVDPath	MDPath	Formation
2978.0	3091.4	Wasatch
4833.0	5038.3	Top of "G" Sand
4859.0	5065.6	Base of "G" Sand
5073.0	5290.2	Fort Union
6297.0	6570.8	Ohio Creek
6557.0	6835.6	Mesaverde
7678.0	7958.9	Top of Gas
9341.0	9621.9	Cameo
9642.0	9922.9	RLNS
9832.0	10112.9	Cozzette
10061.0	10341.9	Corcoran
10224.0	10504.9	Sego



DESIGN TARGET DETAILS

Name	TVD	+N/-S	+E/-W	Northing	Easting	Latitude	Longitude
PBHL (TR 321-24-597)	10524.0	1604.5	1024.7	1656835.50	2231653.60	39° 36' 18.476 N	108° 13' 38.463 W

SECTION DETAILS

Sec	MD	Inc	Azi	TVD	+N/-S	+E/-W	Dleg	TFace	VSect	Target
1	0.0	0.00	0.00	0.0	0.0	0.0	0.00	0.00	0.0	
2	220.0	0.00	0.00	220.0	0.0	0.0	0.00	0.00	0.0	
3	927.1	17.68	32.56	915.9	91.2	58.2	2.50	32.56	108.2	
4	6246.5	17.68	32.56	5984.1	1452.5	927.7	0.00	0.00	1723.5	
5	7424.9	0.00	0.00	7144.0	1604.5	1024.7	1.50	180.00	1903.8	
6	10804.9	0.00	0.00	10524.0	1604.5	1024.7	0.00	0.00	1903.8	PBHL (TR 321-24-597)