

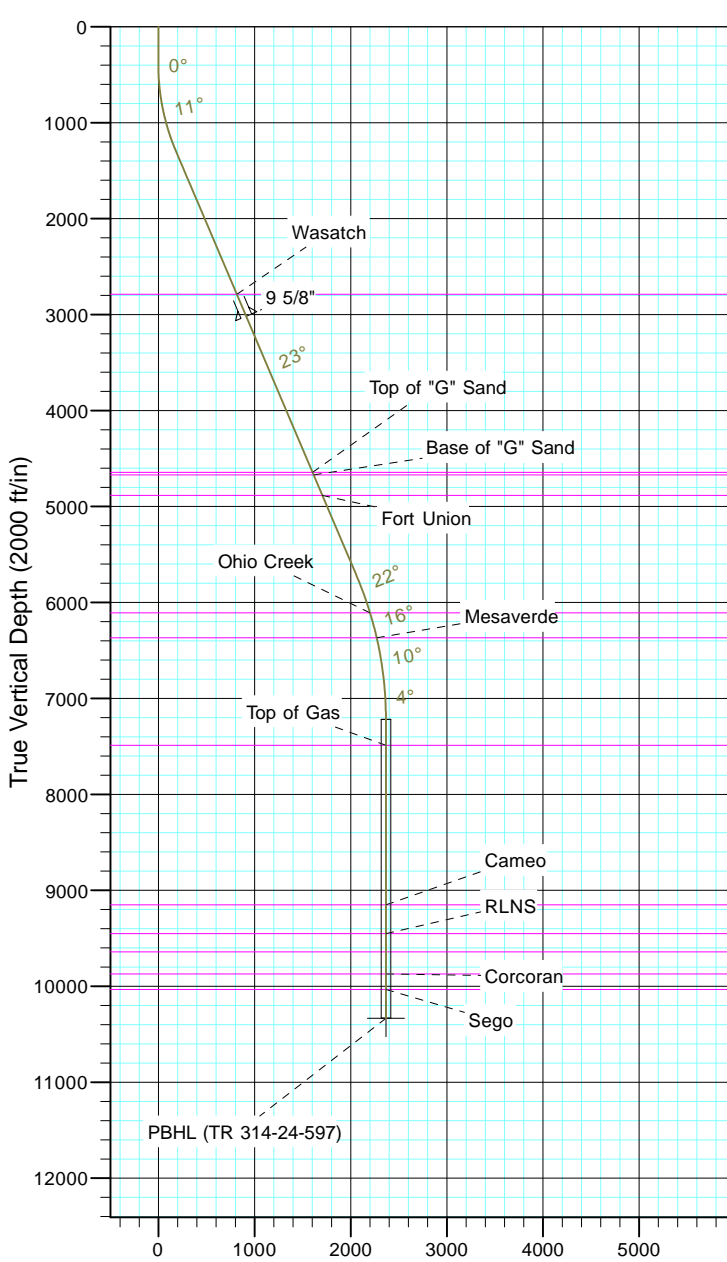
TEP Rocky Mountain LLC

Project: Garfield County, CO NAD83
 Site: TR 1-24-597 Pad
 Well: TR 314-24-597
 Wellbore: OH
 Design: Plan #1



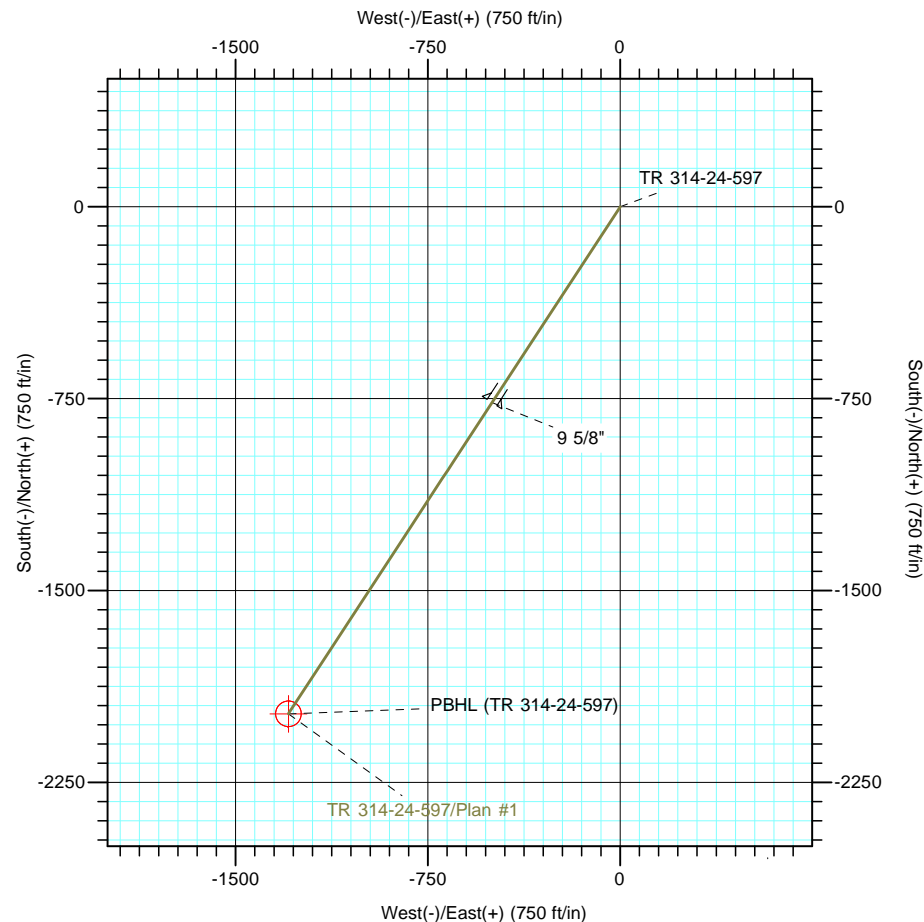
Azimuths to True North
 Magnetic North: 11.57°

Magnetic Field
 Strength: 53050.6snT
 Dip Angle: 66.03°
 Date: 12/31/2004
 Model: IGRF2000



CASING DETAILS			
TVD	MD	Name	Size
3019.6	3193.0	9 5/8"	9.625

FORMATION TOP DETAILS			
TVDPath	MDPath	Formation	
2789.0	2942.5	Wasatch	
4644.0	4957.7	Top of "G" Sand	
4670.0	4986.0	Base of "G" Sand	
4884.0	5218.5	Fort Union	
6108.0	6539.8	Ohio Creek	
6368.0	6808.9	Mesaverde	
7489.0	7937.1	Top of Gas	
9152.0	9600.1	Cameo	
9453.0	9901.1	RLNS	
9643.0	10091.1	Cozzette	
9872.0	10320.1	Corcoran	
10035.0	10483.1	Sego	



DESIGN TARGET DETAILS							
Name	TVD	+N/-S	+E/-W	Northing	Easting	Latitude	Longitude
PBHL (TR 314-24-597)	10335.0	-1981.8	-1294.0	1653275.00	2229177.30	39° 35' 42.566 N	108° 14' 8.718 W

SECTION DETAILS										
Sec	MD	Inc	Azi	TVD	+N/-S	+E/-W	Dleg	TFace	VSect	Target
1	0.0	0.00	0.00	0.0	0.0	0.0	0.00	0.00	0.0	
2	400.0	0.00	0.00	400.0	0.0	0.0	0.00	0.00	0.0	
3	1320.1	23.00	213.14	1295.6	-152.6	-99.6	2.50	213.14	182.2	
4	6133.6	23.00	213.14	5726.4	-1727.5	-1128.0	0.00	0.00	2063.2	
5	7667.1	0.00	0.00	7219.0	-1981.8	-1294.0	1.50	180.00	2366.8	
6	10783.1	0.00	0.00	10335.0	-1981.8	-1294.0	0.00	0.00	2366.8	PBHL (TR 314-24-597)