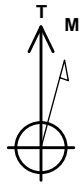


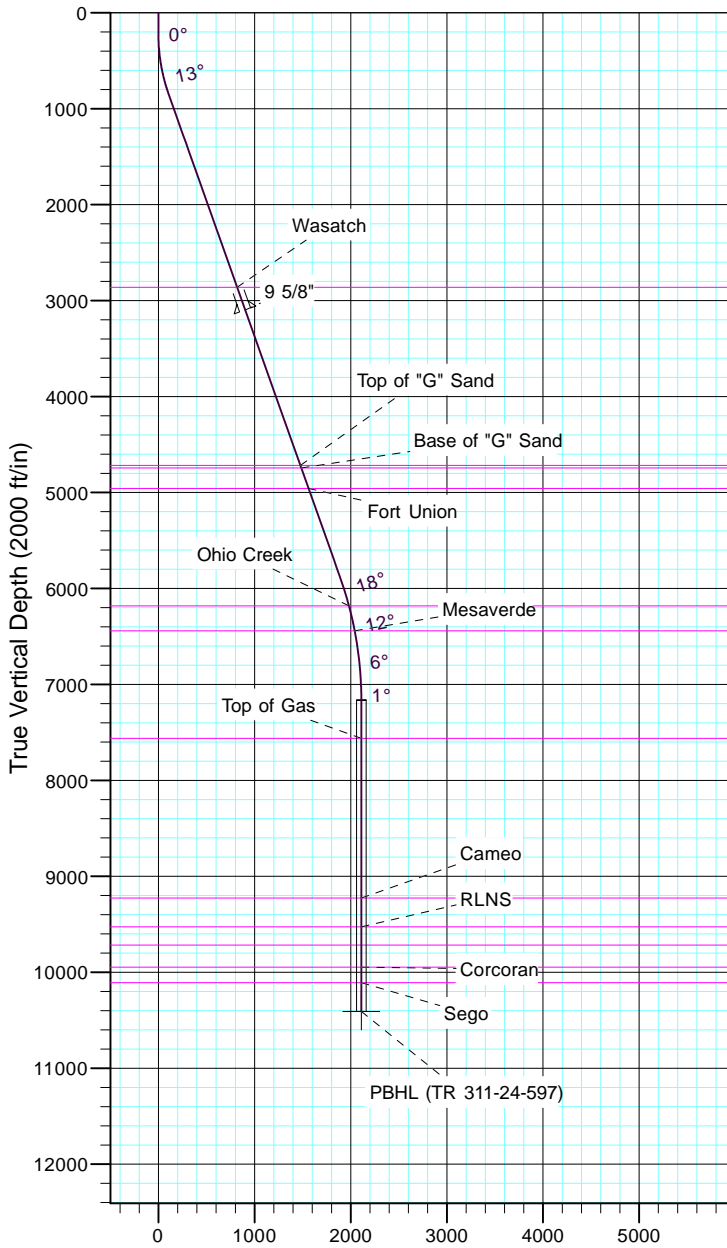
TEP Rocky Mountain LLC

Project: Garfield County, CO NAD83
 Site: TR 1-24-597 Pad
 Well: TR 311-24-597
 Wellbore: OH
 Design: Plan #1



Azimuths to True North
 Magnetic North: 11.57°

Magnetic Field
 Strength: 53050.7snT
 Dip Angle: 66.03°
 Date: 12/31/2004
 Model: IGRF2000



Vertical Section at 320.64° (2000 ft/in)

CASING DETAILS			
TVD	MD	Name	Size
3099.1	3248.0	9 5/8"	9.625

FORMATION TOP DETAILS		
TVDPath	MDPath	Formation
2863.0	2997.6	Wasatch
4718.0	4965.5	Top of "G" Sand
4744.0	4993.1	Base of "G" Sand
4958.0	5220.1	Fort Union
6182.0	6514.6	Ohio Creek
6442.0	6781.4	Mesaverde
7563.0	7906.7	Top of Gas
9226.0	9569.7	Cameo
9527.0	9870.7	RLNS
9717.0	10060.7	Cozzette
9946.0	10289.7	Corcoran
10109.0	10452.7	Sego

DESIGN TARGET DETAILS							
Name	TVD	+N/-S	+E/-W	Northing	Easting	Latitude	Longitude
PBHL (TR 311-24-597)	10409.0	1632.0	-1338.7	1656923.10	2229270.00	39° 36' 18.633 N	108° 14' 8.937 W

SECTION DETAILS										
Sec	MD	Inc	Azi	TVD	+N/-S	+E/-W	Dleg	TFace	VSect	Target
1	0.0	0.00	0.00	0.0	0.0	0.0	0.00	0.00	0.0	
2	220.0	0.00	0.00	220.0	0.0	0.0	0.00	0.00	0.0	
3	870.1	19.50	320.64	857.7	84.7	-69.5	3.00	320.64	109.6	
4	6207.4	19.50	320.64	5888.7	1462.5	-1199.6	0.00	0.00	1891.6	
5	7507.7	0.00	0.00	7164.0	1632.0	-1338.7	1.50	180.00	2110.8	
6	10752.7	0.00	0.00	10409.0	1632.0	-1338.7	0.00	0.00	2110.8	PBHL (TR 311-24-597)

