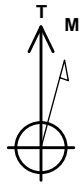


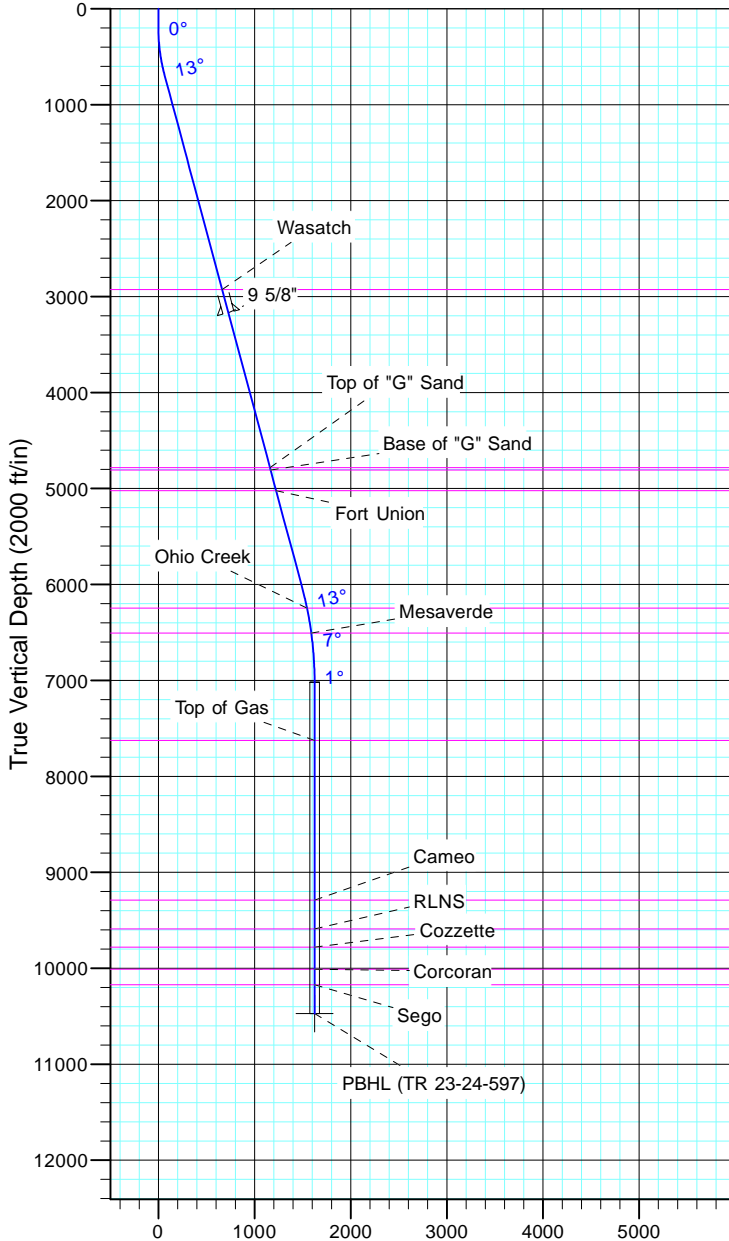
TEP Rocky Mountain LLC

Project: Garfield County, CO NAD83
 Site: TR 1-24-597 Pad
 Well: TR 23-24-597
 Wellbore: OH
 Design: Plan #1



Azimuths to True North
 Magnetic North: 11.57°

Magnetic Field
 Strength: 53050.6snT
 Dip Angle: 66.03°
 Date: 12/31/2004
 Model: IGRF2000



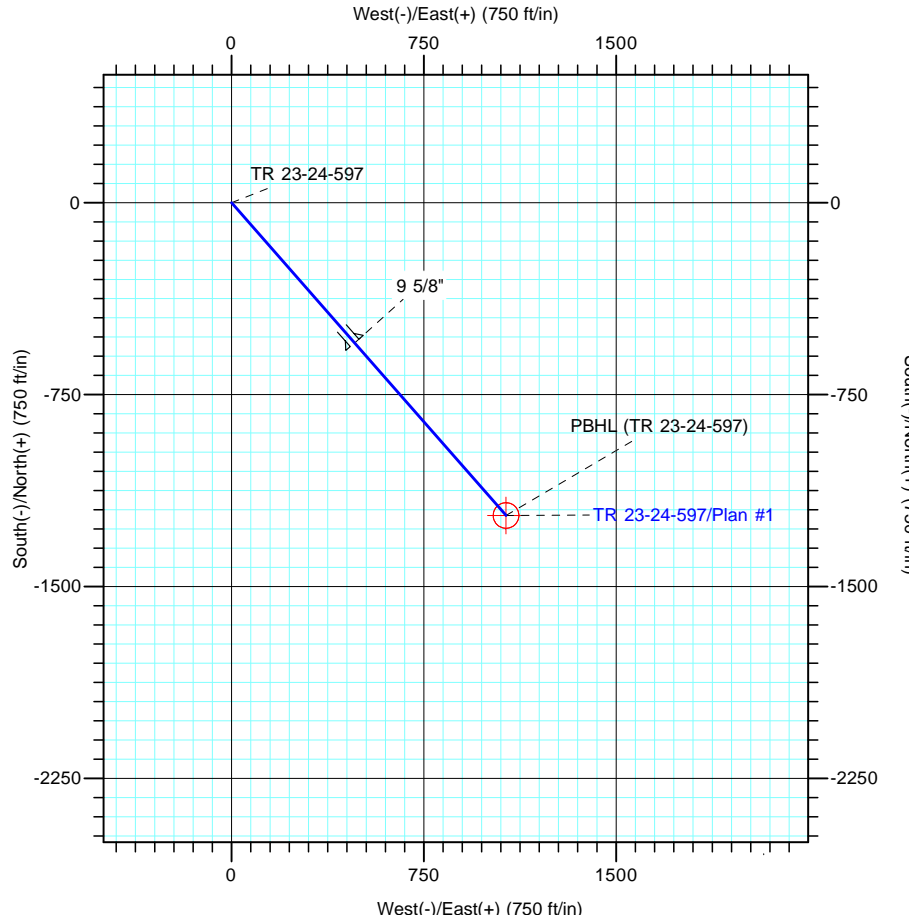
Vertical Section at 138.79° (2000 ft/in)

CASING DETAILS

TVD	MD	Name	Size
3169.0	3262.0	9 5/8"	9.625

FORMATION TOP DETAILS

TVDPath	MDPath	Formation
2927.0	3011.5	Wasatch
4782.0	4931.9	Top of "G" Sand
4808.0	4958.8	Base of "G" Sand
5022.0	5180.4	Fort Union
6246.0	6445.9	Ohio Creek
6506.0	6709.7	Mesaverde
7627.0	7832.3	Top of Gas
9290.0	9495.3	Cameo
9591.0	9796.3	RLNS
9781.0	9986.3	Cozzette
10010.0	10215.3	Corcoran
10173.0	10378.3	Segó



DESIGN TARGET DETAILS

Name	TVD	+N/-S	+E/-W	Northing	Easting	Latitude	Longitude
PBHL (TR 23-24-597)	10473.0	-1222.4	1070.3	1653968.10	2231580.70	39° 35' 50.128 N	108° 13' 38.294 W

SECTION DETAILS

Sec	MD	Inc	Azi	TVD	+N/-S	+E/-W	Dleg	TFace	VSect	Target
1	0.0	0.00	0.00	0.0	0.0	0.0	0.00	0.00	0.0	
2	200.0	0.00	0.00	200.0	0.0	0.0	0.00	0.00	0.0	
3	700.0	15.00	138.79	694.3	-49.0	42.9	3.00	138.79	65.1	
4	6223.3	15.00	138.79	6029.4	-1124.5	984.6	0.00	0.00	1494.6	
5	7223.3	0.00	0.00	7018.0	-1222.4	1070.3	1.50	180.00	1624.7	
6	10678.3	0.00	0.00	10473.0	-1222.4	1070.3	0.00	0.00	1624.7	PBHL (TR 23-24-597)