

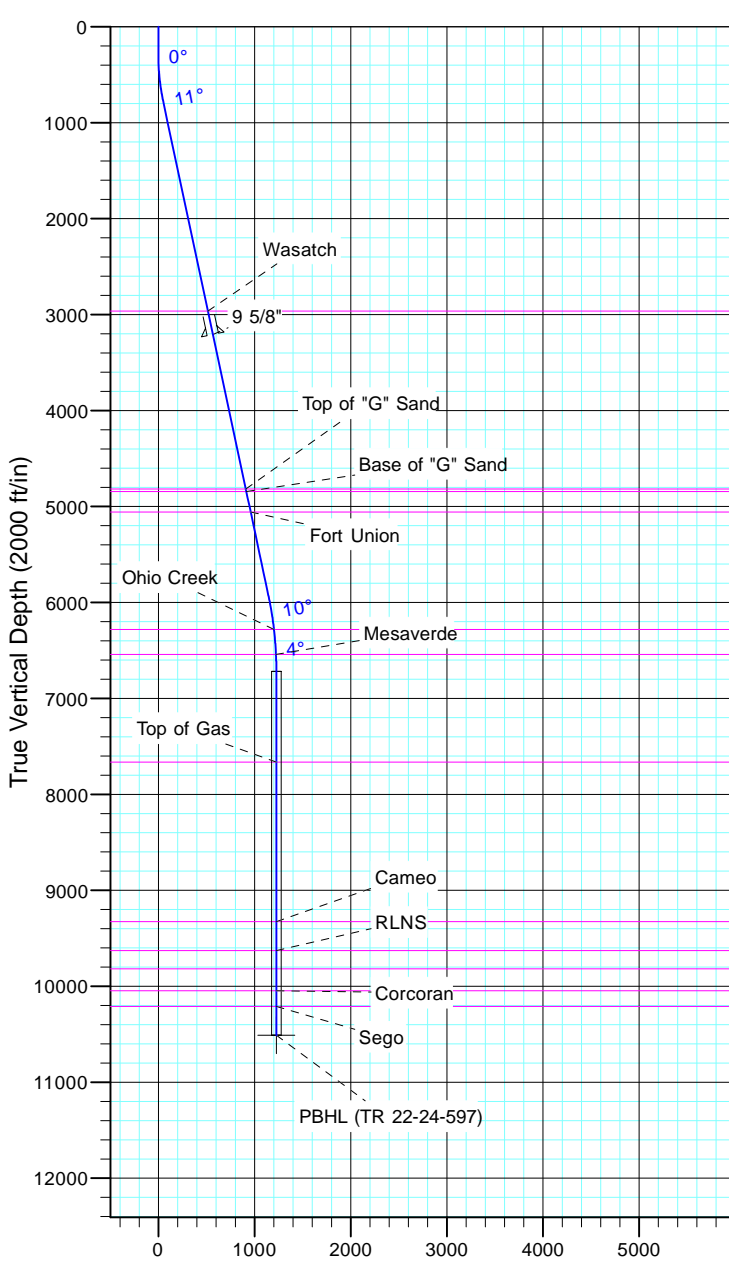
TEP Rocky Mountain LLC

Project: Garfield County, CO NAD83
 Site: TR 1-24-597 Pad
 Well: TR 22-24-597
 Wellbore: OH
 Design: Plan #1



Azimuths to True North
 Magnetic North: 11.57°

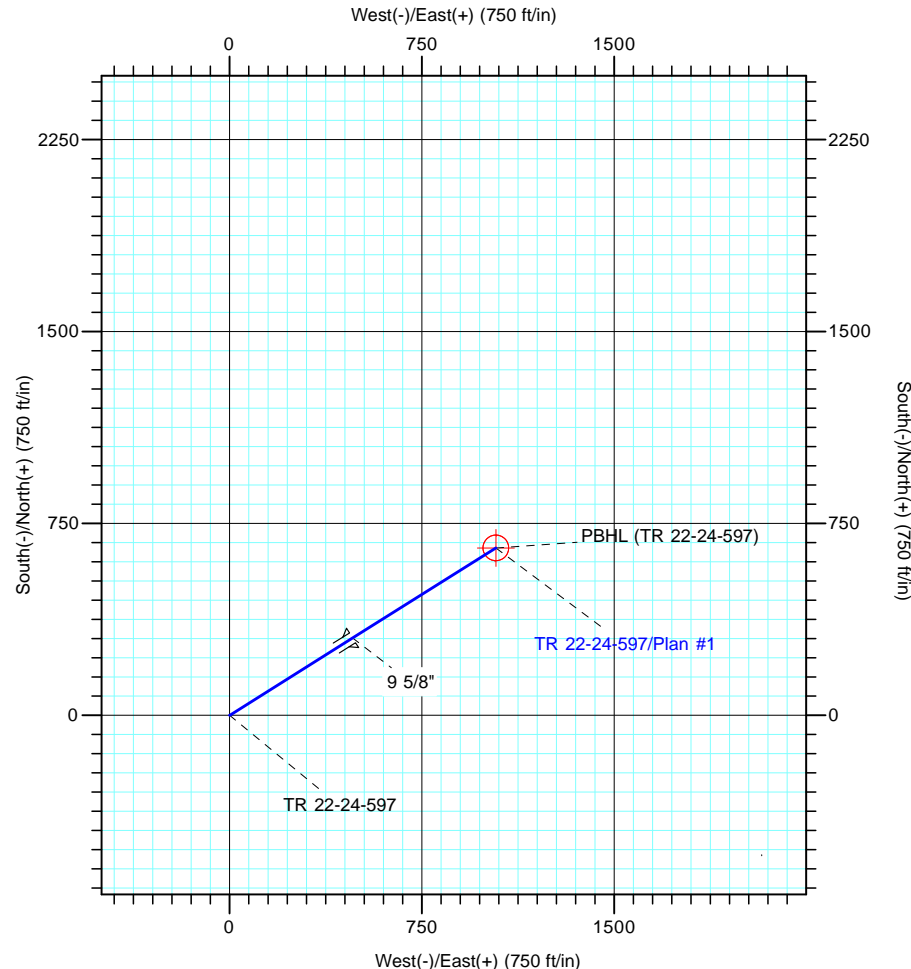
Magnetic Field
 Strength: 53050.7snT
 Dip Angle: 66.03°
 Date: 12/31/2004
 Model: IGRF2000



Vertical Section at 57.78° (2000 ft/in)

CASING DETAILS			
TVD	MD	Name	Size
3208.2	3266.0	9 5/8"	9.625

FORMATION TOP DETAILS		
TVDPath	MDPath	Formation
2964.0	3016.3	Wasatch
4819.0	4912.8	Top of "G" Sand
4845.0	4939.4	Base of "G" Sand
5059.0	5158.1	Fort Union
6283.0	6406.3	Ohio Creek
6543.0	6667.2	Mesaverde
7664.0	7788.3	Top of Gas
9327.0	9451.3	Cameo
9628.0	9752.3	RLNS
9818.0	9942.3	Cozzette
10047.0	10171.3	Corcoran
10210.0	10334.3	Segó



DESIGN TARGET DETAILS							
Name	TVD	+N/-S	+E/-W	Northing	Easting	Latitude	Longitude
PBHL (TR 22-24-597)	10510.0	654.4	1038.4	1655873.90	2231629.10	39° 36' 8.969 N	108° 13' 38.407 W

SECTION DETAILS										
Sec	MD	Inc	Azi	TVD	+N/-S	+E/-W	Dleg	TFace	VSect	Target
1	0.0	0.00	0.00	0.0	0.0	0.0	0.00	0.00	0.0	
2	300.0	0.00	0.00	300.0	0.0	0.0	0.00	0.00	0.0	
3	779.9	12.00	57.78	776.4	26.7	42.4	2.50	57.78	50.1	
4	6042.5	12.00	57.78	5924.0	609.9	967.8	0.00	0.00	1144.0	
5	6842.3	0.00	0.00	6718.0	654.4	1038.4	1.50	180.00	1227.4	
6	10634.3	0.00	0.00	10510.0	654.4	1038.4	0.00	0.00	1227.4	PBHL (TR 22-24-597)