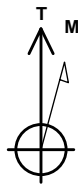


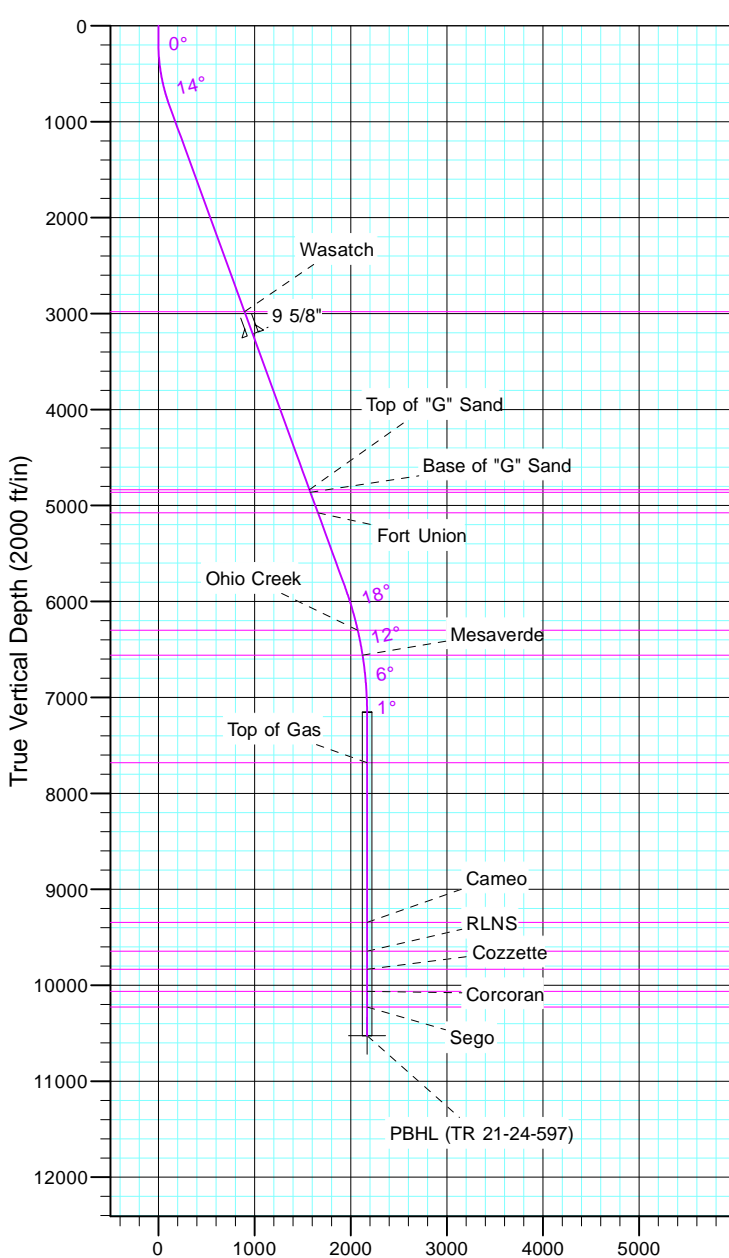
TEP Rocky Mountain LLC

Project: Garfield County, CO NAD83
 Site: TR 1-24-597 Pad
 Well: TR 21-24-597
 Wellbore: OH
 Design: Plan #1



Azimuths to True North
 Magnetic North: 11.57°

Magnetic Field
 Strength: 53050.7snT
 Dip Angle: 66.03°
 Date: 12/31/2004
 Model: IGRF2000



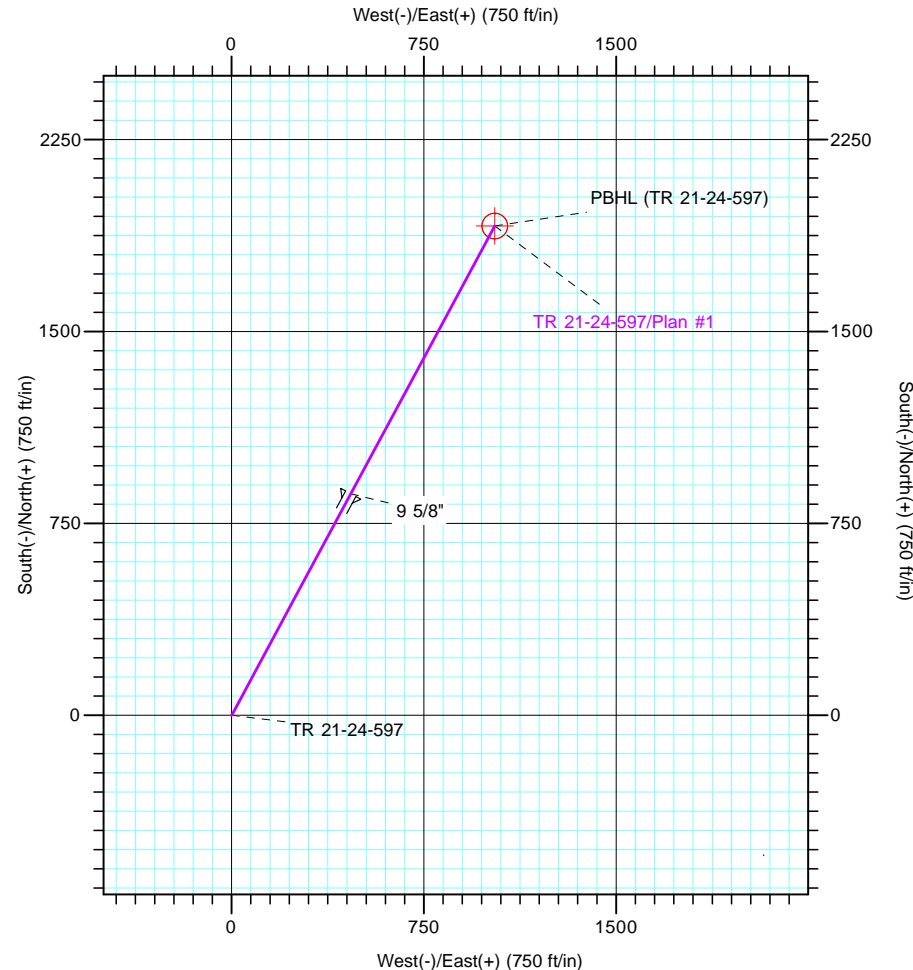
Vertical Section at 28.23° (2000 ft/in)

CASING DETAILS

TVD	MD	Name	Size
3215.7	3382.0	9 5/8"	9.625

FORMATION TOP DETAILS

TVDPath	MDPath	Formation
2981.0	3132.3	Wasatch
4836.0	5106.3	Top of "G" Sand
4862.0	5134.0	Base of "G" Sand
5076.0	5361.7	Fort Union
6300.0	6654.8	Ohio Creek
6560.0	6919.7	Mesaverde
7681.0	8043.1	Top of Gas
9344.0	9706.1	Cameo
9645.0	10007.1	RLNS
9835.0	10197.1	Cozzette
10064.0	10426.1	Corcoran
10227.0	10589.1	Segó



DESIGN TARGET DETAILS

Name	TVD	+N/-S	+E/-W	Northing	Easting	Latitude	Longitude
PBHL (TR 21-24-597)	10527.0	1912.3	1026.5	1657155.30	2231661.70	39° 36' 21.637 N	108° 13' 38.482 W

SECTION DETAILS

Sec	MD	Inc	Azi	TVD	+N/-S	+E/-W	Dleg	TFace	VSect	Target
1	0.0	0.00	0.00	0.0	0.0	0.0	0.00	0.00	0.0	
2	180.0	0.00	0.00	180.0	0.0	0.0	0.00	0.00	0.0	
3	846.6	20.00	28.23	833.1	101.5	54.5	3.00	28.23	115.2	
4	6182.9	20.00	28.23	5847.7	1709.4	917.6	0.00	0.00	1940.1	
5	7516.1	0.00	0.00	7154.0	1912.3	1026.5	1.50	180.00	2170.4	
6	10889.1	0.00	0.00	10527.0	1912.3	1026.5	0.00	0.00	2170.4	PBHL (TR 21-24-597)