

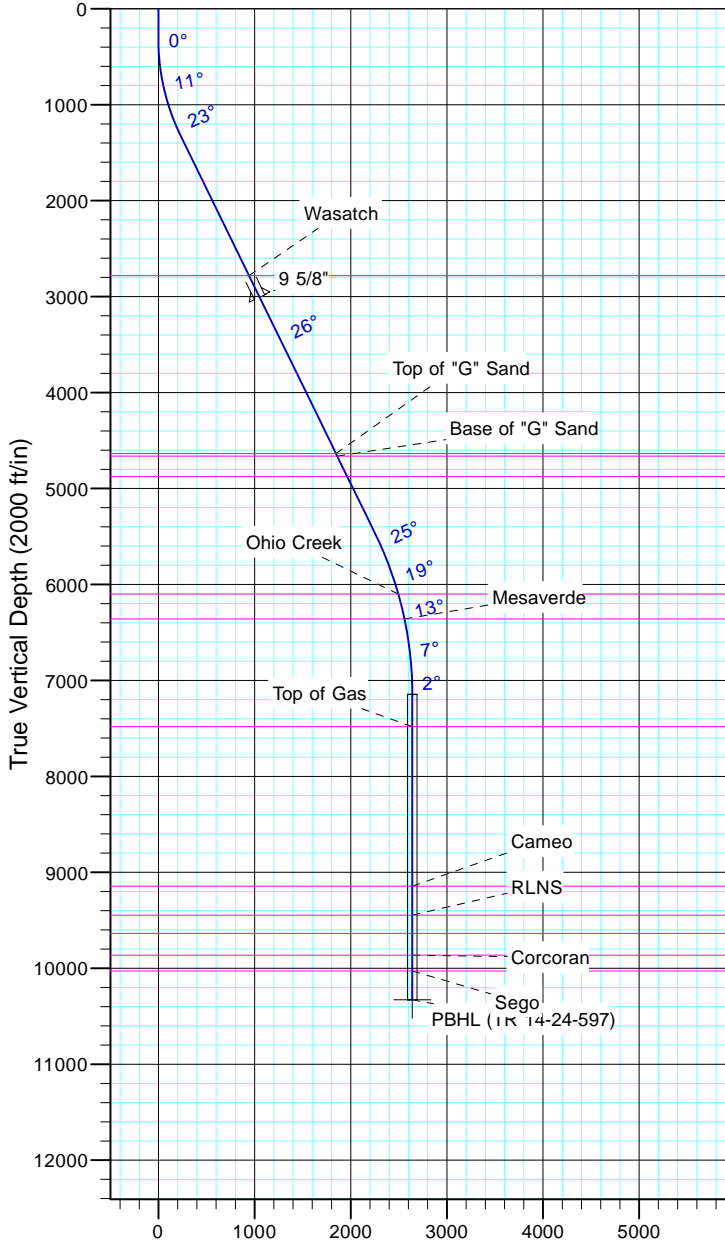
# TEP Rocky Mountain LLC

Project: Garfield County, CO NAD83  
 Site: TR 1-24-597 Pad  
 Well: TR 14-24-597  
 Wellbore: OH  
 Design: Plan #1



Azimuths to True North  
 Magnetic North: 11.57°

Magnetic Field  
 Strength: 53050.6snT  
 Dip Angle: 66.03°  
 Date: 12/31/2004  
 Model: IGRF2000



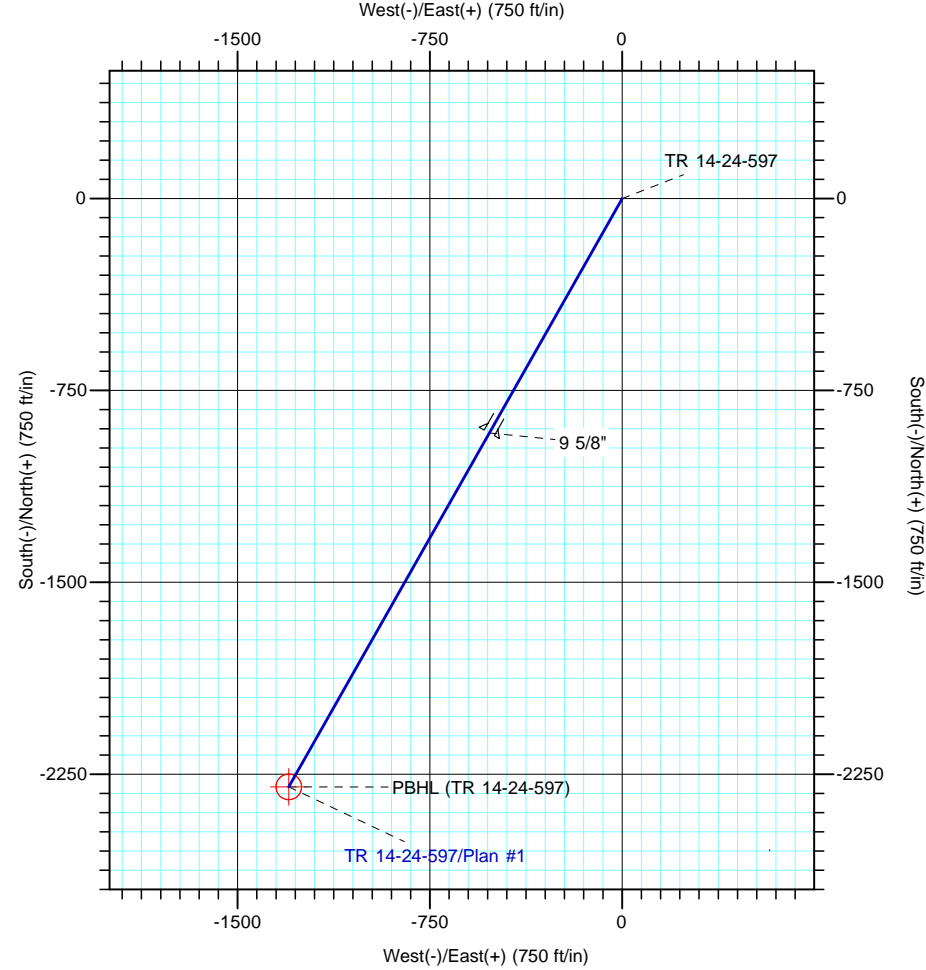
Vertical Section at 209.49° (2000 ft/in)

CASING DETAILS

| TVD    | MD     | Name   | Size  |
|--------|--------|--------|-------|
| 3007.2 | 3232.0 | 9 5/8" | 9.625 |

FORMATION TOP DETAILS

| TVDPath | MDPath  | Formation        |
|---------|---------|------------------|
| 2782.0  | 2981.5  | Wasatch          |
| 4637.0  | 5045.4  | Top of "G" Sand  |
| 4663.0  | 5074.4  | Base of "G" Sand |
| 4877.0  | 5312.5  | Fort Union       |
| 6101.0  | 6648.8  | Ohio Creek       |
| 6361.0  | 6916.7  | Mesaverde        |
| 7482.0  | 8043.3  | Top of Gas       |
| 9145.0  | 9706.3  | Cameo            |
| 9446.0  | 10007.3 | RLNS             |
| 9636.0  | 10197.3 | Cozzette         |
| 9865.0  | 10426.3 | Corcoran         |
| 10028.0 | 10589.3 | Segó             |



DESIGN TARGET DETAILS

| Name                | TVD     | +N/-S   | +E/-W   | Northing   | Easting    | Latitude         | Longitude        |
|---------------------|---------|---------|---------|------------|------------|------------------|------------------|
| PBHL (TR 14-24-597) | 10328.0 | -2299.1 | -1300.5 | 1652951.60 | 2229169.00 | 39° 35' 39.369 N | 108° 14' 8.699 W |

SECTION DETAILS

| Sec | MD      | Inc   | Azi    | TVD     | +N/-S   | +E/-W   | Dleg | TFace  | Vsect  | Target              |
|-----|---------|-------|--------|---------|---------|---------|------|--------|--------|---------------------|
| 1   | 0.0     | 0.00  | 0.00   | 0.0     | 0.0     | 0.0     | 0.00 | 0.00   | 0.0    |                     |
| 2   | 320.0   | 0.00  | 0.00   | 320.0   | 0.0     | 0.0     | 0.00 | 0.00   | 0.0    |                     |
| 3   | 1360.2  | 26.00 | 209.49 | 1324.8  | -201.9  | -114.2  | 2.50 | 209.49 | 232.0  |                     |
| 4   | 5973.7  | 26.00 | 209.49 | 5471.3  | -1962.5 | -1110.1 | 0.00 | 0.00   | 2254.8 |                     |
| 5   | 7707.3  | 0.00  | 0.00   | 7146.0  | -2299.1 | -1300.5 | 1.50 | 180.00 | 2641.4 |                     |
| 6   | 10889.3 | 0.00  | 0.00   | 10328.0 | -2299.1 | -1300.5 | 0.00 | 0.00   | 2641.4 | PBHL (TR 14-24-597) |