

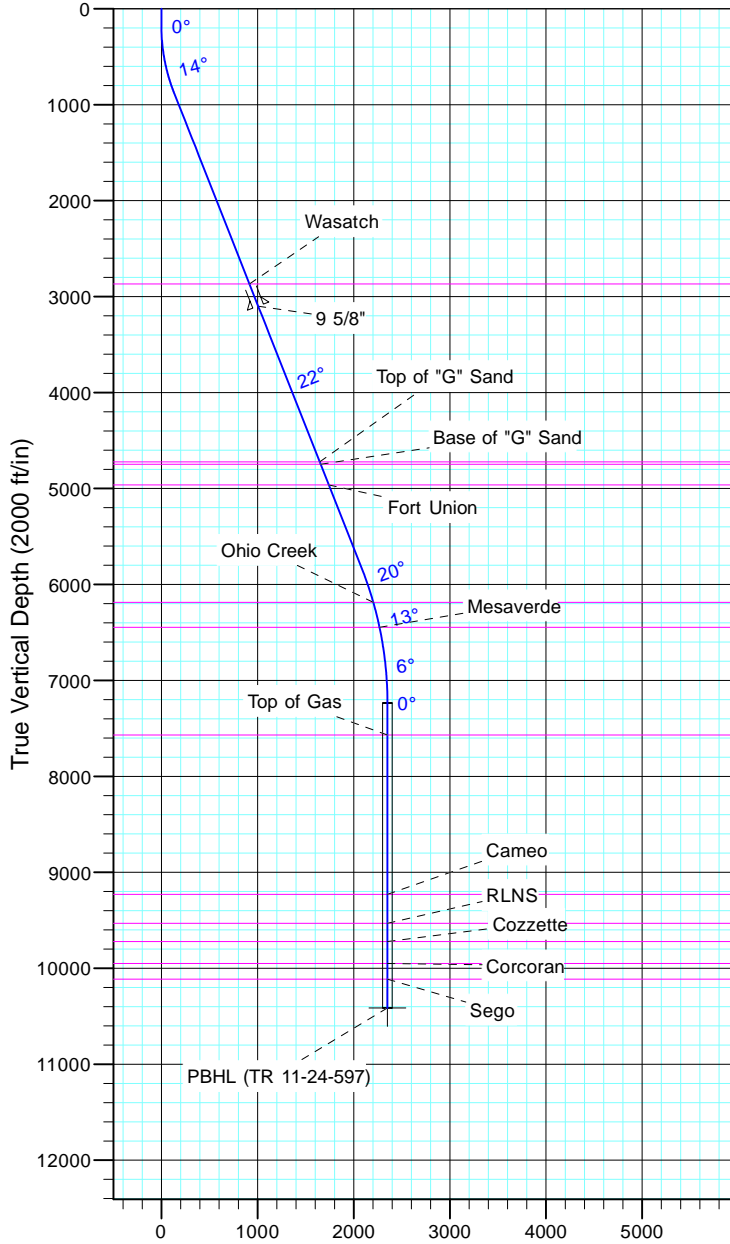
TEP Rocky Mountain LLC

Project: Garfield County, CO NAD83
 Site: TR 1-24-597 Pad
 Well: TR 11-24-597
 Wellbore: OH
 Design: Plan #1



Azimuths to True North
 Magnetic North: 11.57°

Magnetic Field
 Strength: 53050.7snT
 Dip Angle: 66.03°
 Date: 12/31/2004
 Model: IGRF2000



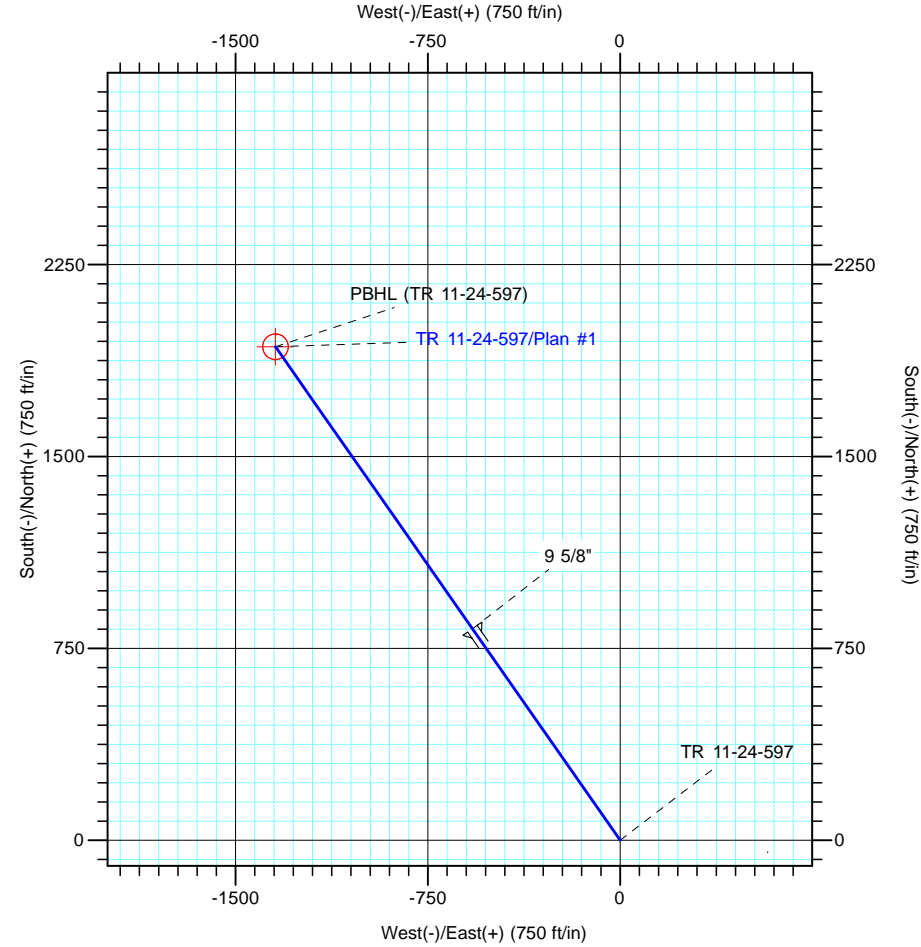
Vertical Section at 325.12° (2000 ft/in)

CASING DETAILS

TVD	MD	Name	Size
3100.2	3283.0	9 5/8"	9.625

FORMATION TOP DETAILS

TVDPath	MDPath	Formation
2868.0	3033.4	Wasatch
4723.0	5027.1	Top of "G" Sand
4749.0	5055.1	Base of "G" Sand
4963.0	5285.1	Fort Union
6187.0	6594.2	Ohio Creek
6447.0	6862.1	Mesaverde
7568.0	7988.9	Top of Gas
9231.0	9651.9	Cameo
9532.0	9952.9	RLNS
9722.0	10142.9	Cozzette
9951.0	10371.9	Corcoran
10114.0	10534.9	Segó



DESIGN TARGET DETAILS

Name	TVD	+N/-S	+E/-W	Northing	Easting	Latitude	Longitude
PBHL (TR 11-24-597)	10414.0	1929.1	-1344.7	1657226.00	2229277.70	39° 36' 21.627 N	108° 14' 8.955 W

SECTION DETAILS

Sec	MD	Inc	Azi	TVD	+N/-S	+E/-W	Dleg	TFace	VSect	Target
1	0.0	0.00	0.00	0.0	0.0	0.0	0.00	0.00	0.0	
2	180.0	0.00	0.00	180.0	0.0	0.0	0.00	0.00	0.0	
3	896.7	21.50	325.12	880.0	109.0	-76.0	3.00	325.12	132.9	
4	6224.4	21.50	325.12	5837.0	1711.0	-1192.7	0.00	0.00	2085.7	
5	7657.9	0.00	0.00	7237.0	1929.1	-1344.7	1.50	180.00	2351.5	
6	10834.9	0.00	0.00	10414.0	1929.1	-1344.7	0.00	0.00	2351.5	PBHL (TR 11-24-597)