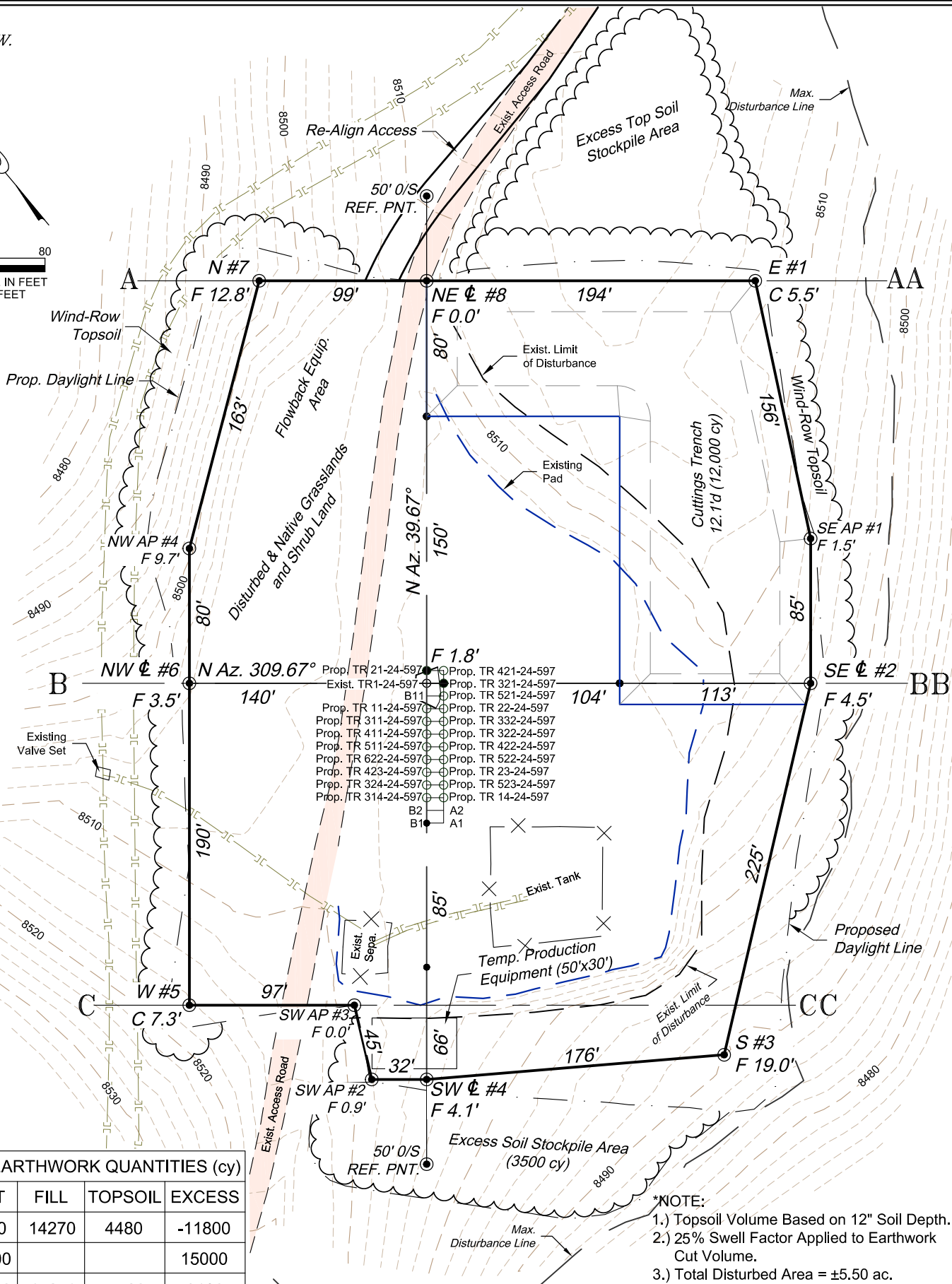
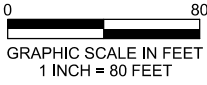
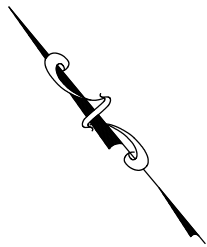


Section 24
T. 5 S., R. 97 W.



- Prop. TR 21-24-597
- Prop. TR 421-24-597
- Exist. TR 1-24-597
- Prop. TR 321-24-597
- Prop. TR 521-24-597
- Prop. TR 22-24-597
- Prop. TR 11-24-597
- Prop. TR 332-24-597
- Prop. TR 311-24-597
- Prop. TR 411-24-597
- Prop. TR 511-24-597
- Prop. TR 622-24-597
- Prop. TR 423-24-597
- Prop. TR 324-24-597
- Prop. TR 314-24-597
- Prop. TR 23-24-597
- Prop. TR 523-24-597
- Prop. TR 14-24-597

ESTIMATED EARTHWORK QUANTITIES (cy)

ITEM	CUT	FILL	TOPSOIL	EXCESS
PAD	6870	14270	4480	-11800
TRENCH	15000			15000
TOTALS	21870	14270	4480	3120

*NOTE:

- 1.) Topsoil Volume Based on 12" Soil Depth.
- 2.) 25% Swell Factor Applied to Earthwork Cut Volume.
- 3.) Total Disturbed Area = ±5.50 ac.

REVISED: 6/12/17

136 East Third Street
Rifle, Colorado 81650
Ph. (970) 625-2720
Fax (970) 625-2773



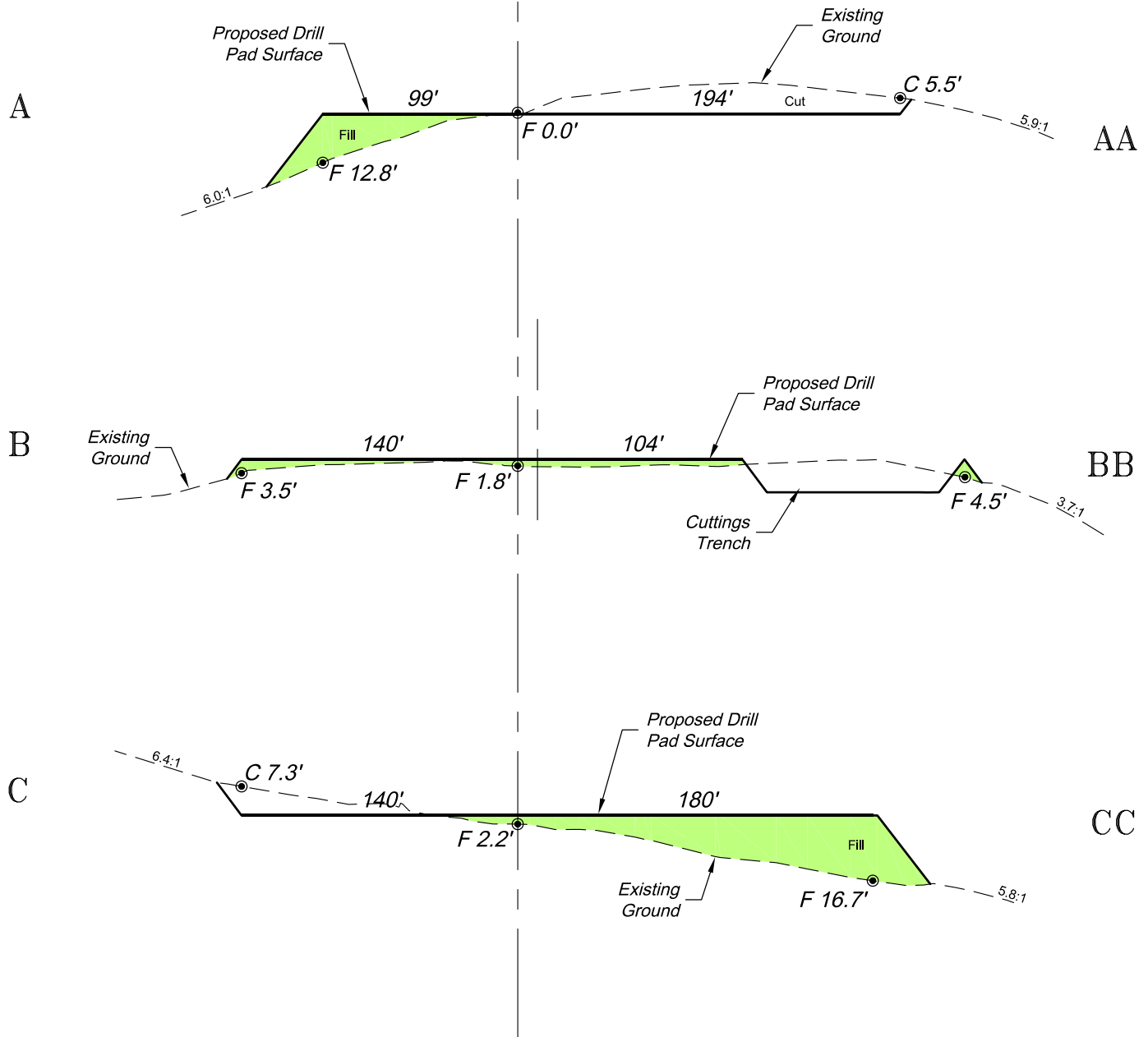
SCALE: 1" = 80'
DATE: 6/1/17
PLAT: 2 of 8
PROJECT: Trail Ridge
DFT: cs

Construction Plan Prepared for:



TR 1-24-597 Drill Pad - Plat 2
CONSTRUCTION LAYOUT

☼
WELLS



SCALE: Horiz.: 1" = 80'
Vert.: 1" = 40'

*NOTE:
CUT SLOPES: 1.5:1
FILL SLOPES: 1.5:1,
UNLESS OTHERWISE NOTED.

REVISED: 6/5/17

136 East Third Street
Rifle, Colorado 81650
Ph. (970) 625-2720
Fax (970) 625-2773



SCALE: As Noted
DATE: 6/1/17
PLAT: 3 of 8
PROJECT: Trail Ridge
DFT: cs

Construction Plan Prepared for:



TEP Rocky Mountain LLC

TR 1-24-597 Drill Pad
CONSTRUCTION LAYOUT
CROSS SECTIONS