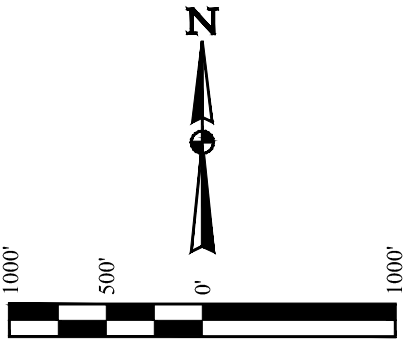


T3N, R63W, 6th P.M.

BONANZA CREEK ENERGY
OPERATING COMPANY, LLC
STATE LONGHORN D14-11-12XRLNB
SW 1/4 SW 1/4, SECTION 11, T3N, R63W, 6th P.M.
WELD COUNTY, COLORADO

BASIS OF BEARINGS
BASIS OF BEARINGS IS A G.P.S. OBSERVATION

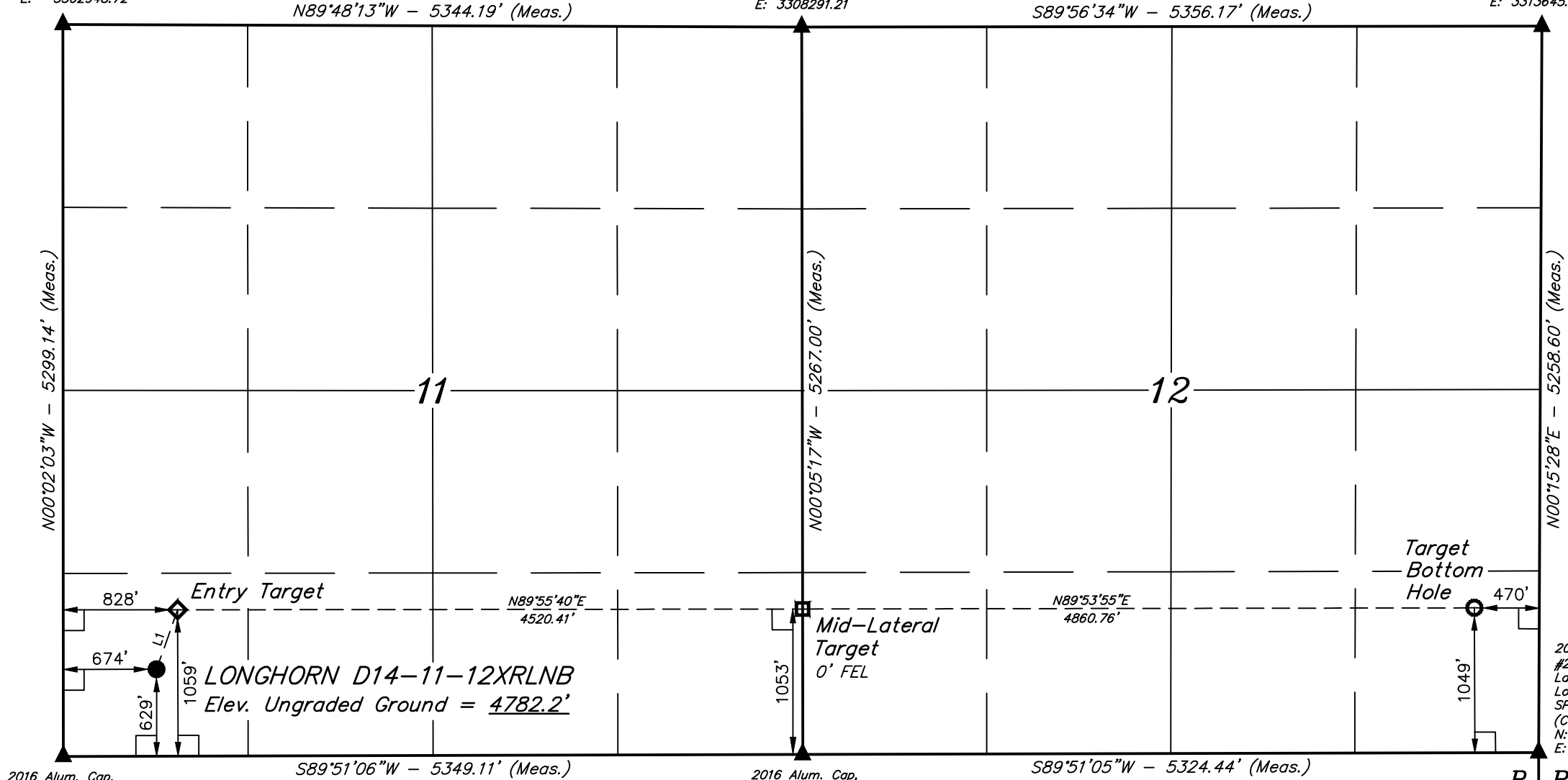
BASIS OF ELEVATION
SPOT ELEVATION LOCATED AT THE NORTHEAST CORNER OF SECTION 24, T5N, R62W, 6th P.M. TAKEN FROM THE POINT OF ROCKS, QUADRANGLE, COLORADO, WELD COUNTY, 7.5 MINUTE QUAD (TOPOGRAPHIC MAP) PUBLISHED BY THE UNITED STATES DEPARTMENT OF THE INTERIOR, GEOLOGICAL SURVEY. SAID ELEVATION IS MARKED AS BEING 4530 FEET.



2016 Alum. Cap,
#28285, 0.3' High
Lat: 40.247300°
Long: 104.414669°
SP NAD 83
(CO. NORTH)
N: 1334787.17
E: 3302948.72

2016 Alum. Cap,
#28285, 0.3' High
Lat: 40.247275°
Long: 104.395531°
SP NAD 83
(CO. NORTH)
N: 1334843.48
E: 3308291.21

2016 Alum. Cap,
#28285, 0.3' High
Lat: 40.247308°
Long: 104.376347°
SP NAD 83
(CO. NORTH)
N: 1334923.60
E: 3313645.37



2016 Alum. Cap,
#28285, 0.3' High
Lat: 40.232758°
Long: 104.414628°
SP NAD 83
(CO. NORTH)
N: 1329489.99
E: 3303025.85

2016 Alum. Cap,
#28285, 0.3' High
Lat: 40.232819°
Long: 104.395472°
SP NAD 83
(CO. NORTH)
N: 1329578.50
E: 3308372.82

2016 Alum. Cap,
#28285, 0.3' High
Lat: 40.232878°
Long: 104.376408°
SP NAD 83
(CO. NORTH)
N: 1329666.63
E: 3313695.12

LINE TABLE		
LINE	DIRECTION	LENGTH
L1	N19°34'53"E	457.24'

LEGEND:

- └─┘ = 90° SYMBOL
● = PROPOSED WELLHEAD.
○ = TARGET BOTTOM HOLE.
◇ = ENTRY TARGET.
□ = MID-LATERAL TARGET.
▲ = SECTION CORNERS LOCATED. (NAD 83)

PDOP = 1.4

NAD 83 (SURFACE LOCATION)	NAD 83 (ENTRY TARGET)	NAD 83 (MID-LATERAL TARGET)	NAD 83 (TARGET BOTTOM HOLE)
LATITUDE = 40°14'04.17" (40.234492)	LATITUDE = 40°14'08.42" (40.235672)	LATITUDE = 40°14'08.55" (40.235708)	LATITUDE = 40°14'08.70" (40.235750)
LONGITUDE = 104°24'43.98" (104.412217)	LONGITUDE = 104°24'42.02" (104.411672)	LONGITUDE = 104°23'43.74" (104.395483)	LONGITUDE = 104°22'41.08" (104.378078)
STATE PLANE NAD 83 (CO. NORTH.)	STATE PLANE NAD 83 (CO. NORTH.)	STATE PLANE NAD 83 (CO. NORTH.)	STATE PLANE NAD 83 (CO. NORTH.)
N: 1330129.52 E: 3303690.63	N: 1330562.30 E: 3303837.81	N: 1330631.10 E: 3308356.50	N: 1330707.55 E: 3313215.37

CERTIFICATE
THIS IS TO CERTIFY THAT THE ABOVE PLAT WAS PREPARED FROM FIELD NOTES OF ACTUAL SURVEYS MADE BY ME OR UNDER MY SUPERVISION, AND THAT THE SAME ARE TRUE AND CORRECT TO THE BEST OF MY KNOWLEDGE AND BELIEF.

REGISTERED LAND SURVEYOR
REGISTRATION NO. 28285
STATE OF COLORADO
06-22-17

REV: 1 06-22-17 K.B. (SL & ET MOVES)



UELS, LLC
Corporate Office * 85 South 200 East
Vernal, UT 84078 * (435) 789-1017

SURVEYED BY	GREG WEIMER, C.T.	05-17-17	SCALE
DRAWN BY	D.COX	05-31-17	1" = 1000'

WELL LOCATION PLAT