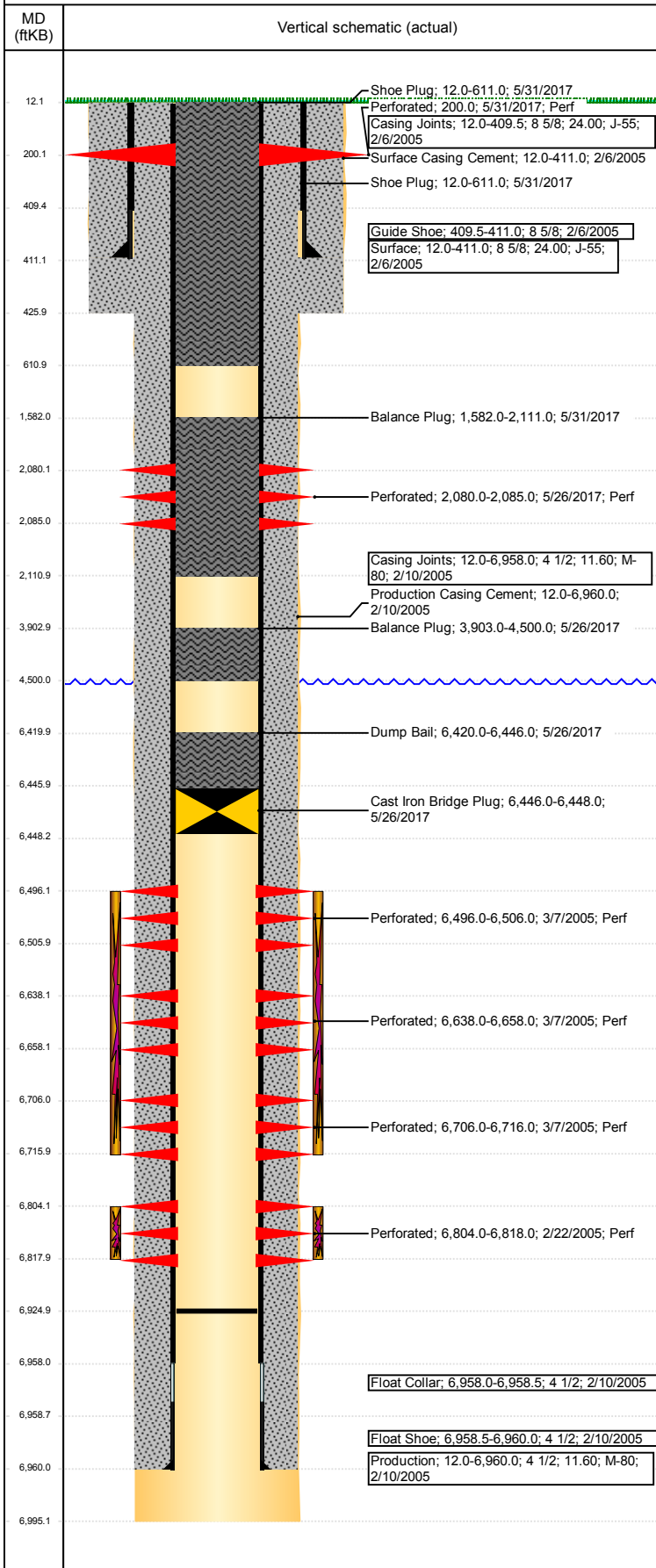


Well Name: PAULINE PJ 5

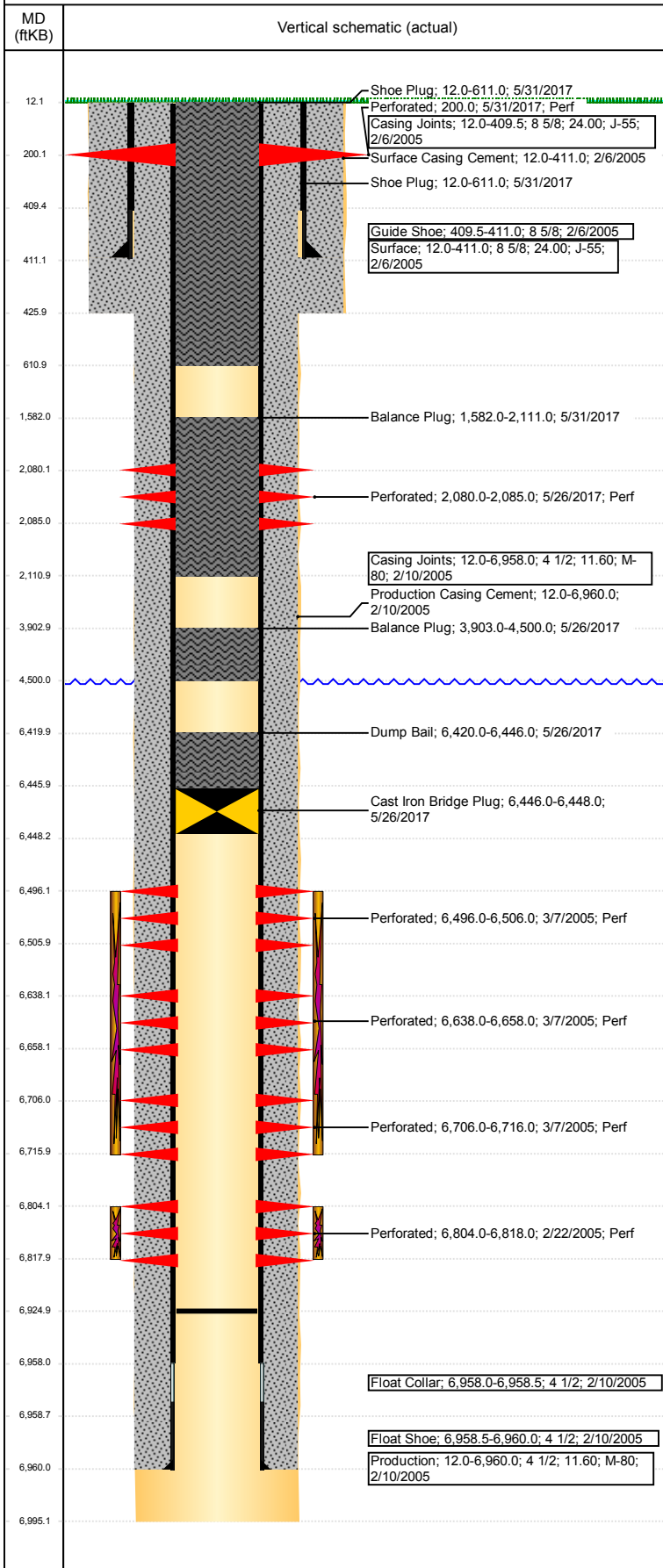
Vertical - Original Hole, 6/22/2017 10:18:33 AM



Well Header								
API 05-123-25616		Business Unit DJ BASIN		District 15	Well Config Vertical			
Original KB Elevation (ft) 4,604		KB - GL / MSL (ftKB) 12.00		Spud Date 2/5/2005		P & A Date 5/31/2017		
Comment DISCREPANCY: DRL RPT SURF TD 365'; STATE RPT SURF TD 411'								
Directions To Well								
Congressional Location								
Quarter 3	Quarter 4	Section	Township	Twntshp N/S Dir	Range	Range E/W Dir		
Bottom Hole Location								
North-South Distance (ft)		From N or S Line		East-West Distance (ft)		From E or W Line		
Plug Back Total Depths								
Date	Depth (ftKB)	Method		Com				
2/15/2005	6,922.0	CASED HOLE LOG		DEPTH LOGGER ON CBL				
3/17/2005	6,925.0	TAG		CLEANED OUT TO LAND TUBING				
Wellbore Sections								
Section Des		Size (in)		Act Top, MD (ftKB)		Act Btm, MD (ftKB)		
SURFACE		12 1/4		12		426		
PRODUCTION		7 7/8		426		6,995		
Zone Statuses								
Zone Name	Status Date	Status	Fluid Type	Job	Prod Method			
CODELL	3/26/2005	PR		COMPLETION...				
CODELL	5/26/2017	P&A		PLUG AND AB...				
NIOBRARA	3/26/2005	PR		COMPLETION...				
NIOBRARA	5/26/2017	P&A		PLUG AND AB...				
Casing Strings								
Csg Des		Run Date	OD (in)	Wt/Len (lb/ft)	Grade	Top, MD (ftKB)	MD (ftKB)	
Surface		2/6/2005	8 5/8	24.00	J-55	12.0	411.0	
Production		2/10/2005	4 1/2	11.60	M-80	12.0	6,960.0	
Cement								
Description Surface Casing Cement				Top Depth (ftKB) 12.0		Bottom Depth (ftKB) 411.0		
Description Production Casing Cement				Top Depth (ftKB) 12.0		Bottom Depth (ftKB) 6,960.0		
Description Dump Bail				Top Depth (ftKB) 6,420.0		Bottom Depth (ftKB) 6,446.0		
Description Balance Plug				Top Depth (ftKB) 3,903.0		Bottom Depth (ftKB) 4,500.0		
Description Balance Plug				Top Depth (ftKB) 1,582.0		Bottom Depth (ftKB) 2,111.0		
Description Shoe Plug				Top Depth (ftKB) 12.0		Bottom Depth (ftKB) 611.0		
Description Shoe Plug				Top Depth (ftKB) 12.0		Bottom Depth (ftKB) 611.0		
Tubing Strings								
Tubing Description Tubing		Run Date 3/17/2005	String... 2 3/8	ID (in) 2.00	Wt (lb/ft) 4.70	Grade J-55	Len (ft) 6,474.00	Set De...
Other In Hole								
Run Date		Des			OD (in)	Top (ftKB)	Btm (ftKB)	
5/26/2017		Cast Iron Bridge Plug			3.99	6,446.0	6,448.0	
Logs								
Date		Type			Top, MD (ftKB)		Btm, MD (ftKB)	
2/15/2005		CBL/CCL/GR			0.0		6,919.0	
11/23/2015		GYRO			10.0		6,400.0	
Perforation Data								
Linked Zone		Bnch/St g	Sum of Entered Shot Total	Top (ftKB)	Btm (ftKB)		Date	
CODELL, Original Hole			4	200.00	200.00		5/31/2017	
			0	2,080.00	2,085.00		5/26/2017	
NIOBRARA, Original Hole		A	40	6,496.00	6,506.00		3/7/2005	
NIOBRARA, Original Hole		B	80	6,638.00	6,658.00		3/7/2005	
NIOBRARA, Original Hole		C	40	6,706.00	6,716.00		3/7/2005	
CODELL, Original Hole			56	6,804.00	6,818.00		2/22/2005	

Well Name: PAULINE PJ 5

Vertical - Original Hole, 6/22/2017 10:18:34 AM



Perforation Data					
Linked Zone	Bnch/St g	Sum of Entered Shot Total	Top (ftKB)	Btm (ftKB)	Date
Total (Sum)		220			
Stimulation Intervals					
Start Date 2/24/2005		Primary Job Type COMPLETION - ORIGINAL			
Technical Result		Tech Result Details		Tech Result Note	
Comment					
Start Date 2/24/2005		Primary Job Type COMPLETION - ORIGINAL			
Technical Result		Tech Result Details		Tech Result Note	
Comment					