



Weld County, Colorado  
Section 34-T01N-R65W  
Buford 33-05-1L  
plan1

Azimuth Corrections:

To convert a Magnetic Direction to a True Direction, Add 8.28° East

Buford 33-05-1L Surf loc: 770 FSL 794 FWL Section 34-T01N-R65W			
NAD83 Colorado - HARN Universal Transverse Mercator (US Survey Feet) Zone 13N (108 W to 102 W) RKB=5136+25 @ 5161.00ft			
Northing	Easting	Latitude	Longitude
14527892.90	1736550.30	40.00267561	-104.65671502

Section Details

Sec	MD	Inc	Azi	TVD	+N/-S	+E/-W	Dleg	Vsect	Annotation
1	0.00	0.00	0.00	0.00	0.00	0.00	0.00	0.00	
2	5000.00	0.00	0.00	5000.00	0.00	0.00	0.00	0.00	KOP Begin 10°/100' build
3	5626.28	62.63	252.29	5508.81	-94.18	-294.85	10.00	11.86	Begin 62.60° tangent section
4	8506.96	62.63	252.29	6833.26	-872.56	-2731.71	0.00	109.89	Begin 10°/100' build/turn
5	9562.04	89.83	359.90	7182.00	-322.60	-3370.49	10.00	844.52	
6	19235.69	89.83	359.90	7211.04	9350.99	-3386.99	0.00	9945.49	

DESIGN TARGET DETAILS

Name	TVD	+N/-S	+E/-W	Northing	Easting	Latitude	Longitude
LP Buford 33-05-1L 470 FSL 2580 FEL	7182.00	-322.60	-3370.49	14527570.30	1733179.82	40.00182473	-104.66875480
BHL Buford 33-05-1L 470 FNL 2580 FEL	7211.00	9337.52	-3424.18	14537230.40	1733126.13	40.02835326	-104.66881831

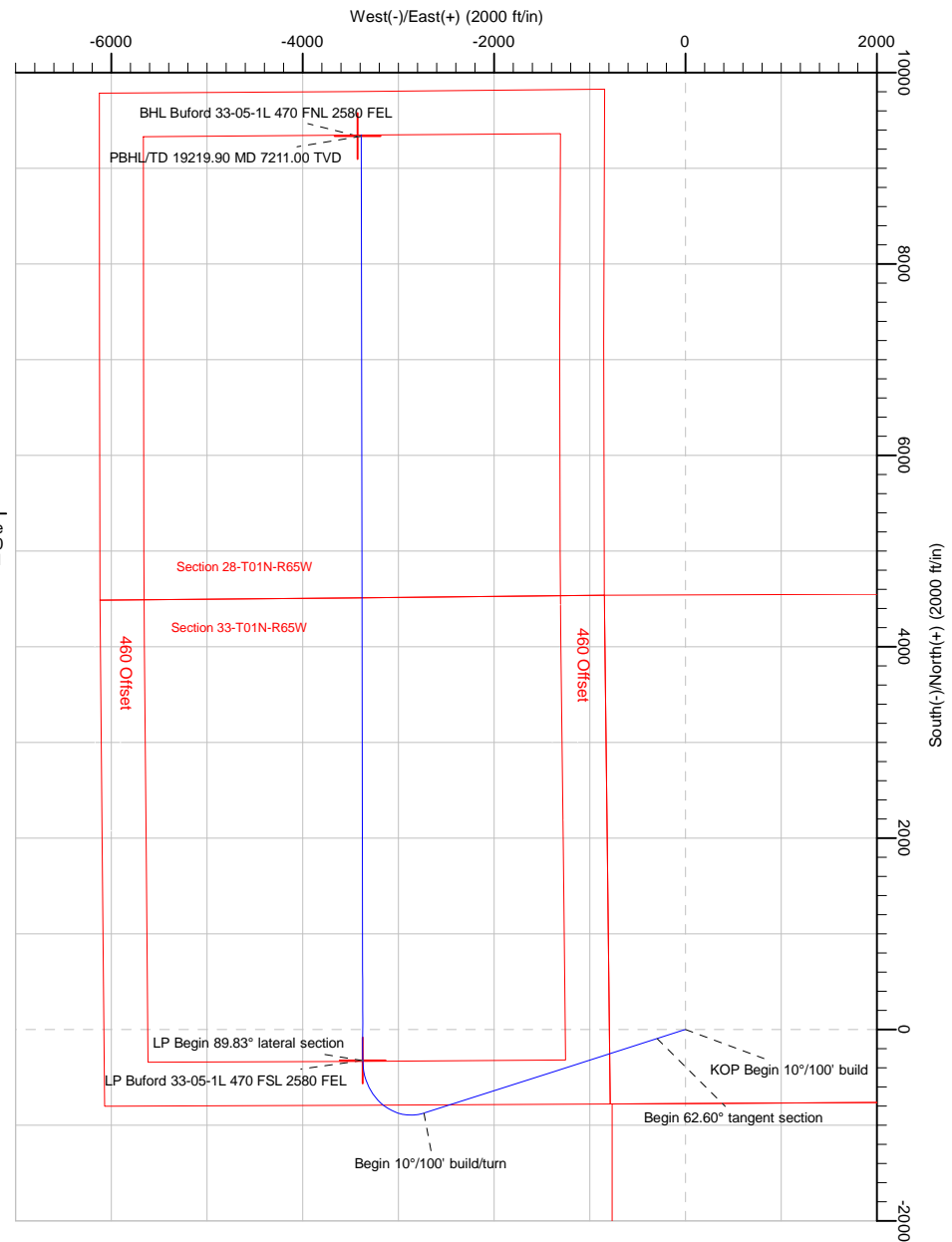
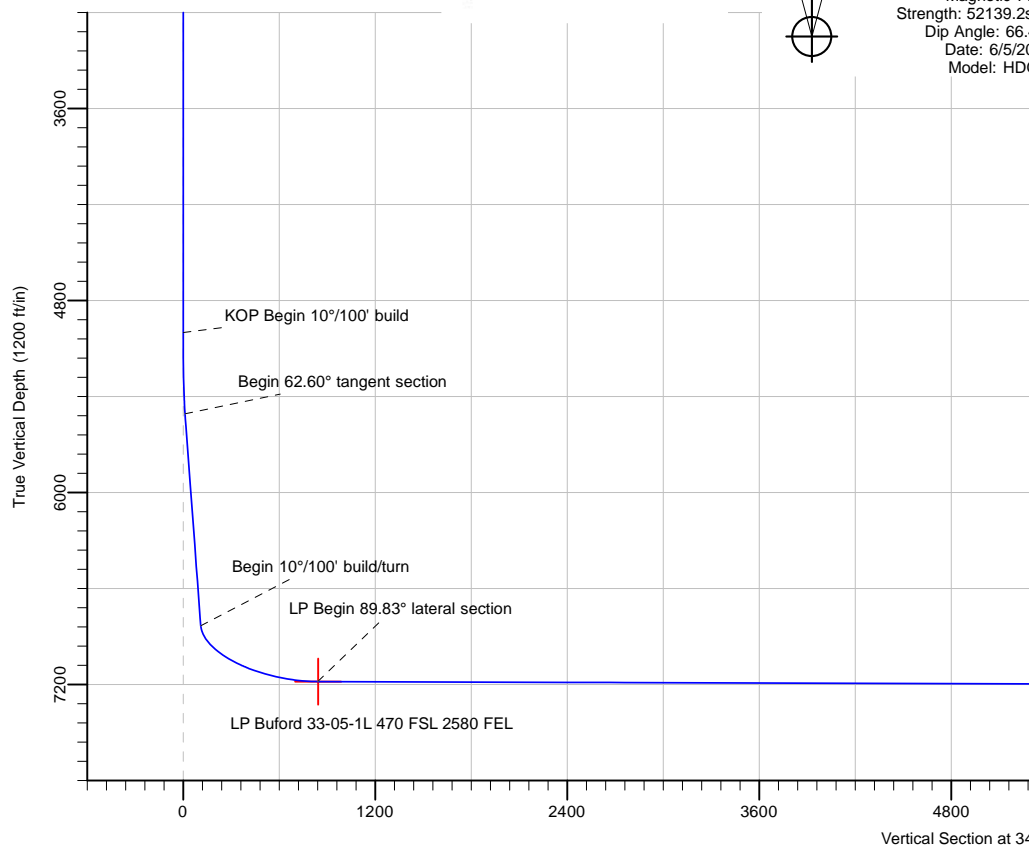


PRODIRECTIONAL



Azimuths to Grid North  
True North: -0.22°  
Magnetic North: 8.06°

Magnetic Field  
Strength: 52139.2snT  
Dip Angle: 66.45°  
Date: 6/5/2017  
Model: HDGM



PBHL/TD 19219.90 MD 7211.00 TVD

BHL Buford 33-05-1L 470 FNL 2580 FEL

Note: All lease lines and hard lines are estimates only and are subject to customers approval.

<b>Database:</b>	DB_Aug0116_LT_v14	<b>Local Co-ordinate Reference:</b>	Well Buford 33-05-1L
<b>Company:</b>	Confluence Resources	<b>TVD Reference:</b>	RKB=5136+25 @ 5161.00ft
<b>Project:</b>	Weld County, Colorado	<b>MD Reference:</b>	RKB=5136+25 @ 5161.00ft
<b>Site:</b>	Section 34-T01N-R65W	<b>North Reference:</b>	Grid
<b>Well:</b>	Buford 33-05-1L	<b>Survey Calculation Method:</b>	Minimum Curvature
<b>Wellbore:</b>	Original Hole		
<b>Design:</b>	plan1		

<b>Project</b>	Weld County, Colorado		
<b>Map System:</b>	Universal Transverse Mercator (US Survey Feet)	<b>System Datum:</b>	Mean Sea Level
<b>Geo Datum:</b>	NAD83 Colorado - HARN		
<b>Map Zone:</b>	Zone 13N (108 W to 102 W)		

Site		Section 34-T01N-R65W			
Site Position:		Northing:	14,527,892.80 usft	Latitude:	40.00267560
From:	Map	Easting:	1,736,525.30 usft	Longitude:	-104.65680429
Position Uncertainty:	0.00 ft	Slot Radius:	13-3/16 "	Grid Convergence:	0.22 °

Well	Buford 33-05-1L, Surf loc: 770 FSL 794 FWL Section 34-T01N-R65W					
Well Position	+N/-S	0.10 ft	Northing:	14,527,892.90 usft	Latitude:	40.00267561
	+E/-W	25.00 ft	Easting:	1,736,550.30 usft	Longitude:	-104.65671501
Position Uncertainty		0.00 ft	Wellhead Elevation:		Ground Level:	5,136.00 ft

<b>Wellbore</b>	Original Hole				
<b>Magnetics</b>	<b>Model Name</b>	<b>Sample Date</b>	<b>Declination (°)</b>	<b>Dip Angle (°)</b>	<b>Field Strength (nT)</b>
	HDGM	6/5/2017	8.28	66.45	52,139.20000000

<b>Design</b>	plan1			
<b>Audit Notes:</b>				
<b>Version:</b>	<b>Phase:</b>	PLAN	<b>Tie On Depth:</b>	0.00
<b>Vertical Section:</b>	<b>Depth From (TVD) (ft)</b>	<b>+N/-S (ft)</b>	<b>+E/-W (ft)</b>	<b>Direction (°)</b>
	0.00	0.00	0.00	340.09

<b>Plan Survey Tool Program</b>	<b>Date</b>			
<b>Depth From (ft)</b>	<b>Depth To (ft)</b>	<b>Survey (Wellbore)</b>	<b>Tool Name</b>	<b>Remarks</b>
1	0.00	19,219.90	plan1 (Original Hole)	

<b>Plan Sections</b>										
<b>Measured Depth (ft)</b>	<b>Inclination (°)</b>	<b>Azimuth (°)</b>	<b>Vertical Depth (ft)</b>	<b>+N/-S (ft)</b>	<b>+E/-W (ft)</b>	<b>Dogleg Rate (°/100ft)</b>	<b>Build Rate (°/100ft)</b>	<b>Turn Rate (°/100ft)</b>	<b>TFO (°)</b>	<b>Target</b>
0.00	0.00	0.00	0.00	0.00	0.00	0.00	0.00	0.00	0.00	
5,000.00	0.00	0.00	5,000.00	0.00	0.00	0.00	0.00	0.00	0.00	
5,626.28	62.63	252.29	5,508.81	-94.18	-294.85	10.00	10.00	0.00	252.29	
8,506.96	62.63	252.29	6,833.26	-872.56	-2,731.71	0.00	0.00	0.00	0.00	
9,562.04	89.83	359.90	7,182.00	-322.60	-3,370.49	10.00	2.58	10.20	98.46	LP Buford 33-05-1L 4'
19,235.69	89.83	359.90	7,211.04	9,350.99	-3,386.99	0.00	0.00	0.00	0.00	BHL Buford 33-05-1L

<b>Database:</b>	DB_Aug0116_LT_v14	<b>Local Co-ordinate Reference:</b>	Well Buford 33-05-1L
<b>Company:</b>	Confluence Resources	<b>TVD Reference:</b>	RKB=5136+25 @ 5161.00ft
<b>Project:</b>	Weld County, Colorado	<b>MD Reference:</b>	RKB=5136+25 @ 5161.00ft
<b>Site:</b>	Section 34-T01N-R65W	<b>North Reference:</b>	Grid
<b>Well:</b>	Buford 33-05-1L	<b>Survey Calculation Method:</b>	Minimum Curvature
<b>Wellbore:</b>	Original Hole		
<b>Design:</b>	plan1		

Planned Survey									
Measured Depth (ft)	Inclination (°)	Azimuth (°)	Vertical Depth (ft)	+N/-S (ft)	+E/-W (ft)	Vertical Section (ft)	Dogleg Rate (°/100ft)	Build Rate (°/100ft)	Turn Rate (°/100ft)
0.00	0.00	0.00	0.00	0.00	0.00	0.00	0.00	0.00	0.00
100.00	0.00	0.00	100.00	0.00	0.00	0.00	0.00	0.00	0.00
200.00	0.00	0.00	200.00	0.00	0.00	0.00	0.00	0.00	0.00
300.00	0.00	0.00	300.00	0.00	0.00	0.00	0.00	0.00	0.00
400.00	0.00	0.00	400.00	0.00	0.00	0.00	0.00	0.00	0.00
500.00	0.00	0.00	500.00	0.00	0.00	0.00	0.00	0.00	0.00
600.00	0.00	0.00	600.00	0.00	0.00	0.00	0.00	0.00	0.00
700.00	0.00	0.00	700.00	0.00	0.00	0.00	0.00	0.00	0.00
800.00	0.00	0.00	800.00	0.00	0.00	0.00	0.00	0.00	0.00
900.00	0.00	0.00	900.00	0.00	0.00	0.00	0.00	0.00	0.00
1,000.00	0.00	0.00	1,000.00	0.00	0.00	0.00	0.00	0.00	0.00
1,100.00	0.00	0.00	1,100.00	0.00	0.00	0.00	0.00	0.00	0.00
1,200.00	0.00	0.00	1,200.00	0.00	0.00	0.00	0.00	0.00	0.00
1,300.00	0.00	0.00	1,300.00	0.00	0.00	0.00	0.00	0.00	0.00
1,400.00	0.00	0.00	1,400.00	0.00	0.00	0.00	0.00	0.00	0.00
1,500.00	0.00	0.00	1,500.00	0.00	0.00	0.00	0.00	0.00	0.00
1,600.00	0.00	0.00	1,600.00	0.00	0.00	0.00	0.00	0.00	0.00
1,700.00	0.00	0.00	1,700.00	0.00	0.00	0.00	0.00	0.00	0.00
1,800.00	0.00	0.00	1,800.00	0.00	0.00	0.00	0.00	0.00	0.00
1,900.00	0.00	0.00	1,900.00	0.00	0.00	0.00	0.00	0.00	0.00
2,000.00	0.00	0.00	2,000.00	0.00	0.00	0.00	0.00	0.00	0.00
2,100.00	0.00	0.00	2,100.00	0.00	0.00	0.00	0.00	0.00	0.00
2,200.00	0.00	0.00	2,200.00	0.00	0.00	0.00	0.00	0.00	0.00
2,300.00	0.00	0.00	2,300.00	0.00	0.00	0.00	0.00	0.00	0.00
2,400.00	0.00	0.00	2,400.00	0.00	0.00	0.00	0.00	0.00	0.00
2,500.01	0.00	0.00	2,500.01	0.00	0.00	0.00	0.00	0.00	0.00
2,600.01	0.00	0.00	2,600.01	0.00	0.00	0.00	0.00	0.00	0.00
2,700.01	0.00	0.00	2,700.01	0.00	0.00	0.00	0.00	0.00	0.00
2,800.01	0.00	0.00	2,800.01	0.00	0.00	0.00	0.00	0.00	0.00
2,900.01	0.00	0.00	2,900.01	0.00	0.00	0.00	0.00	0.00	0.00
3,000.01	0.00	0.00	3,000.01	0.00	0.00	0.00	0.00	0.00	0.00
3,100.01	0.00	0.00	3,100.01	0.00	0.00	0.00	0.00	0.00	0.00
3,200.01	0.00	0.00	3,200.01	0.00	0.00	0.00	0.00	0.00	0.00
3,300.01	0.00	0.00	3,300.01	0.00	0.00	0.00	0.00	0.00	0.00
3,400.01	0.00	0.00	3,400.01	0.00	0.00	0.00	0.00	0.00	0.00
3,500.01	0.00	0.00	3,500.01	0.00	0.00	0.00	0.00	0.00	0.00
3,600.01	0.00	0.00	3,600.01	0.00	0.00	0.00	0.00	0.00	0.00
3,700.01	0.00	0.00	3,700.01	0.00	0.00	0.00	0.00	0.00	0.00
3,800.01	0.00	0.00	3,800.01	0.00	0.00	0.00	0.00	0.00	0.00
3,900.01	0.00	0.00	3,900.01	0.00	0.00	0.00	0.00	0.00	0.00
4,000.01	0.00	0.00	4,000.01	0.00	0.00	0.00	0.00	0.00	0.00
4,100.01	0.00	0.00	4,100.01	0.00	0.00	0.00	0.00	0.00	0.00
4,200.01	0.00	0.00	4,200.01	0.00	0.00	0.00	0.00	0.00	0.00
4,300.01	0.00	0.00	4,300.01	0.00	0.00	0.00	0.00	0.00	0.00
4,400.01	0.00	0.00	4,400.01	0.00	0.00	0.00	0.00	0.00	0.00
4,500.01	0.00	0.00	4,500.01	0.00	0.00	0.00	0.00	0.00	0.00
4,600.01	0.00	0.00	4,600.01	0.00	0.00	0.00	0.00	0.00	0.00
4,700.01	0.00	0.00	4,700.01	0.00	0.00	0.00	0.00	0.00	0.00
4,800.01	0.00	0.00	4,800.01	0.00	0.00	0.00	0.00	0.00	0.00
4,900.01	0.00	0.00	4,900.01	0.00	0.00	0.00	0.00	0.00	0.00
5,000.00	0.00	0.00	5,000.00	0.00	0.00	0.00	0.00	0.00	0.00
KOP Begin 10°/100' build									
5,000.01	0.00	252.29	5,000.01	0.00	0.00	0.00	0.00	0.00	0.00
5,100.01	10.00	252.29	5,099.50	-2.65	-8.29	0.33	10.00	10.00	0.00

<b>Database:</b>	DB_Aug0116_LT_v14	<b>Local Co-ordinate Reference:</b>	Well Buford 33-05-1L
<b>Company:</b>	Confluence Resources	<b>TVD Reference:</b>	RKB=5136+25 @ 5161.00ft
<b>Project:</b>	Weld County, Colorado	<b>MD Reference:</b>	RKB=5136+25 @ 5161.00ft
<b>Site:</b>	Section 34-T01N-R65W	<b>North Reference:</b>	Grid
<b>Well:</b>	Buford 33-05-1L	<b>Survey Calculation Method:</b>	Minimum Curvature
<b>Wellbore:</b>	Original Hole		
<b>Design:</b>	plan1		

Planned Survey									
Measured Depth (ft)	Inclination (°)	Azimuth (°)	Vertical Depth (ft)	+N/-S (ft)	+E/-W (ft)	Vertical Section (ft)	Dogleg Rate (°/100ft)	Build Rate (°/100ft)	Turn Rate (°/100ft)
5,200.01	20.00	252.29	5,195.97	-10.51	-32.92	1.32	10.00	10.00	0.00
5,300.01	30.00	252.29	5,286.49	-23.36	-73.13	2.94	10.00	10.00	0.00
5,400.01	40.00	252.29	5,368.30	-40.79	-127.70	5.14	10.00	10.00	0.00
5,500.01	50.00	252.29	5,438.92	-62.28	-194.97	7.84	10.00	10.00	0.00
5,600.01	60.00	252.29	5,496.20	-87.17	-272.90	10.98	10.00	10.00	0.00
5,626.01	62.60	252.29	5,508.68	-94.11	-294.63	11.85	10.00	10.00	0.00
Begin 62.60° tangent section									
5,626.28	62.63	252.29	5,508.81	-94.18	-294.85	11.86	10.00	10.00	0.00
5,700.01	62.63	252.29	5,542.71	-114.11	-357.23	14.37	0.00	0.00	0.00
5,800.01	62.63	252.29	5,588.69	-141.13	-441.82	17.77	0.00	0.00	0.00
5,900.01	62.63	252.29	5,634.66	-168.15	-526.41	21.18	0.00	0.00	0.00
6,000.01	62.63	252.29	5,680.64	-195.17	-611.01	24.58	0.00	0.00	0.00
6,100.01	62.63	252.29	5,726.62	-222.19	-695.60	27.98	0.00	0.00	0.00
6,200.01	62.63	252.29	5,772.59	-249.21	-780.19	31.39	0.00	0.00	0.00
6,300.01	62.63	252.29	5,818.57	-276.23	-864.79	34.79	0.00	0.00	0.00
6,400.01	62.63	252.29	5,864.55	-303.25	-949.38	38.19	0.00	0.00	0.00
6,500.01	62.63	252.29	5,910.53	-330.27	-1,033.97	41.60	0.00	0.00	0.00
6,600.01	62.63	252.29	5,956.50	-357.29	-1,118.57	45.00	0.00	0.00	0.00
6,700.01	62.63	252.29	6,002.48	-384.31	-1,203.16	48.40	0.00	0.00	0.00
6,800.01	62.63	252.29	6,048.46	-411.33	-1,287.75	51.81	0.00	0.00	0.00
6,900.01	62.63	252.29	6,094.43	-438.36	-1,372.35	55.21	0.00	0.00	0.00
7,000.01	62.63	252.29	6,140.41	-465.38	-1,456.94	58.61	0.00	0.00	0.00
7,100.01	62.63	252.29	6,186.39	-492.40	-1,541.53	62.01	0.00	0.00	0.00
7,200.01	62.63	252.29	6,232.36	-519.42	-1,626.13	65.42	0.00	0.00	0.00
7,300.01	62.63	252.29	6,278.34	-546.44	-1,710.72	68.82	0.00	0.00	0.00
7,400.01	62.63	252.29	6,324.32	-573.46	-1,795.31	72.22	0.00	0.00	0.00
7,500.02	62.63	252.29	6,370.30	-600.48	-1,879.91	75.63	0.00	0.00	0.00
7,600.02	62.63	252.29	6,416.27	-627.50	-1,964.50	79.03	0.00	0.00	0.00
7,700.02	62.63	252.29	6,462.25	-654.52	-2,049.09	82.43	0.00	0.00	0.00
7,800.02	62.63	252.29	6,508.23	-681.54	-2,133.69	85.84	0.00	0.00	0.00
7,900.02	62.63	252.29	6,554.20	-708.56	-2,218.28	89.24	0.00	0.00	0.00
8,000.02	62.63	252.29	6,600.18	-735.58	-2,302.87	92.64	0.00	0.00	0.00
8,100.02	62.63	252.29	6,646.16	-762.60	-2,387.47	96.05	0.00	0.00	0.00
8,200.02	62.63	252.29	6,692.14	-789.63	-2,472.06	99.45	0.00	0.00	0.00
8,300.02	62.63	252.29	6,738.11	-816.65	-2,556.65	102.85	0.00	0.00	0.00
8,400.02	62.63	252.29	6,784.09	-843.67	-2,641.25	106.25	0.00	0.00	0.00
8,500.02	62.63	252.29	6,830.07	-870.69	-2,725.84	109.66	0.00	0.00	0.00
8,506.78	62.63	252.29	6,833.18	-872.52	-2,731.56	109.89	0.00	0.00	0.00
Begin 10°/100' build/turn									
8,506.96	62.63	252.29	6,833.26	-872.56	-2,731.71	109.89	0.00	0.00	0.00
8,600.02	61.65	262.75	6,876.84	-890.34	-2,811.87	120.48	10.00	-1.05	11.25
8,700.02	61.50	274.13	6,924.56	-892.73	-2,899.57	148.10	10.00	-0.15	11.37
8,800.02	62.30	285.43	6,971.78	-877.74	-2,986.29	191.72	10.00	0.79	11.30
8,900.02	63.99	296.48	7,017.07	-845.84	-3,069.39	250.02	10.00	1.69	11.05
9,000.02	66.49	307.15	7,059.05	-797.99	-3,146.35	321.22	10.00	2.50	10.67
9,100.02	69.69	317.37	7,096.44	-735.64	-3,214.83	403.16	10.00	3.20	10.22
9,200.02	73.46	327.13	7,128.11	-660.69	-3,272.75	493.36	10.00	3.77	9.77
9,300.02	77.66	336.51	7,153.10	-575.41	-3,318.34	589.06	10.00	4.20	9.37
9,400.02	82.17	345.58	7,170.64	-482.41	-3,350.22	687.37	10.00	4.51	9.07
9,500.02	86.87	354.45	7,180.21	-384.50	-3,367.44	785.29	10.00	4.70	8.87
9,559.59	89.71	359.69	7,181.99	-325.05	-3,370.48	842.21	10.00	4.77	8.80
LP Begin 89.83° lateral section									
9,562.04	89.83	359.90	7,182.00	-322.60	-3,370.49	844.52	10.00	4.78	8.78

<b>Database:</b>	DB_Aug0116_LT_v14	<b>Local Co-ordinate Reference:</b>	Well Buford 33-05-1L
<b>Company:</b>	Confluence Resources	<b>TVD Reference:</b>	RKB=5136+25 @ 5161.00ft
<b>Project:</b>	Weld County, Colorado	<b>MD Reference:</b>	RKB=5136+25 @ 5161.00ft
<b>Site:</b>	Section 34-T01N-R65W	<b>North Reference:</b>	Grid
<b>Well:</b>	Buford 33-05-1L	<b>Survey Calculation Method:</b>	Minimum Curvature
<b>Wellbore:</b>	Original Hole		
<b>Design:</b>	plan1		

Planned Survey									
Measured Depth (ft)	Inclination (°)	Azimuth (°)	Vertical Depth (ft)	+N/-S (ft)	+E/-W (ft)	Vertical Section (ft)	Dogleg Rate (°/100ft)	Build Rate (°/100ft)	Turn Rate (°/100ft)
9,600.02	89.83	359.90	7,182.11	-284.63	-3,370.55	880.25	0.00	0.00	0.00
9,700.02	89.83	359.90	7,182.41	-184.63	-3,370.72	974.33	0.00	0.00	0.00
9,800.02	89.83	359.90	7,182.71	-84.63	-3,370.89	1,068.41	0.00	0.00	0.00
9,900.02	89.83	359.90	7,183.01	15.37	-3,371.06	1,162.49	0.00	0.00	0.00
10,000.02	89.83	359.90	7,183.31	115.37	-3,371.23	1,256.57	0.00	0.00	0.00
10,100.02	89.83	359.90	7,183.62	215.37	-3,371.40	1,350.65	0.00	0.00	0.00
10,200.02	89.83	359.90	7,183.92	315.37	-3,371.58	1,444.73	0.00	0.00	0.00
10,300.02	89.83	359.90	7,184.22	415.37	-3,371.75	1,538.81	0.00	0.00	0.00
10,400.02	89.83	359.90	7,184.52	515.37	-3,371.92	1,632.89	0.00	0.00	0.00
10,500.02	89.83	359.90	7,184.82	615.37	-3,372.09	1,726.97	0.00	0.00	0.00
10,600.02	89.83	359.90	7,185.12	715.37	-3,372.26	1,821.05	0.00	0.00	0.00
10,700.02	89.83	359.90	7,185.42	815.37	-3,372.43	1,915.13	0.00	0.00	0.00
10,800.02	89.83	359.90	7,185.72	915.37	-3,372.60	2,009.21	0.00	0.00	0.00
10,900.02	89.83	359.90	7,186.02	1,015.37	-3,372.77	2,103.29	0.00	0.00	0.00
11,000.02	89.83	359.90	7,186.32	1,115.37	-3,372.94	2,197.37	0.00	0.00	0.00
11,100.02	89.83	359.90	7,186.62	1,215.37	-3,373.11	2,291.45	0.00	0.00	0.00
11,200.02	89.83	359.90	7,186.92	1,315.37	-3,373.28	2,385.53	0.00	0.00	0.00
11,300.02	89.83	359.90	7,187.22	1,415.37	-3,373.45	2,479.61	0.00	0.00	0.00
11,400.02	89.83	359.90	7,187.52	1,515.37	-3,373.62	2,573.69	0.00	0.00	0.00
11,500.02	89.83	359.90	7,187.82	1,615.37	-3,373.79	2,667.77	0.00	0.00	0.00
11,600.02	89.83	359.90	7,188.12	1,715.37	-3,373.96	2,761.85	0.00	0.00	0.00
11,700.02	89.83	359.90	7,188.42	1,815.37	-3,374.13	2,855.93	0.00	0.00	0.00
11,800.02	89.83	359.90	7,188.72	1,915.36	-3,374.31	2,950.01	0.00	0.00	0.00
11,900.02	89.83	359.90	7,189.02	2,015.36	-3,374.48	3,044.09	0.00	0.00	0.00
12,000.02	89.83	359.90	7,189.32	2,115.36	-3,374.65	3,138.17	0.00	0.00	0.00
12,100.02	89.83	359.90	7,189.62	2,215.36	-3,374.82	3,232.25	0.00	0.00	0.00
12,200.02	89.83	359.90	7,189.92	2,315.36	-3,374.99	3,326.33	0.00	0.00	0.00
12,300.02	89.83	359.90	7,190.22	2,415.36	-3,375.16	3,420.41	0.00	0.00	0.00
12,400.03	89.83	359.90	7,190.52	2,515.36	-3,375.33	3,514.49	0.00	0.00	0.00
12,500.03	89.83	359.90	7,190.82	2,615.36	-3,375.50	3,608.57	0.00	0.00	0.00
12,600.03	89.83	359.90	7,191.12	2,715.36	-3,375.67	3,702.65	0.00	0.00	0.00
12,700.03	89.83	359.90	7,191.42	2,815.36	-3,375.84	3,796.73	0.00	0.00	0.00
12,800.03	89.83	359.90	7,191.72	2,915.36	-3,376.01	3,890.81	0.00	0.00	0.00
12,900.03	89.83	359.90	7,192.02	3,015.36	-3,376.18	3,984.89	0.00	0.00	0.00
13,000.03	89.83	359.90	7,192.32	3,115.36	-3,376.35	4,078.97	0.00	0.00	0.00
13,100.03	89.83	359.90	7,192.62	3,215.36	-3,376.52	4,173.05	0.00	0.00	0.00
13,200.03	89.83	359.90	7,192.92	3,315.36	-3,376.69	4,267.13	0.00	0.00	0.00
13,300.03	89.83	359.90	7,193.22	3,415.36	-3,376.86	4,361.21	0.00	0.00	0.00
13,400.03	89.83	359.90	7,193.52	3,515.36	-3,377.03	4,455.29	0.00	0.00	0.00
13,500.03	89.83	359.90	7,193.82	3,615.36	-3,377.21	4,549.37	0.00	0.00	0.00
13,600.03	89.83	359.90	7,194.12	3,715.36	-3,377.38	4,643.45	0.00	0.00	0.00
13,700.03	89.83	359.90	7,194.42	3,815.36	-3,377.55	4,737.53	0.00	0.00	0.00
13,800.03	89.83	359.90	7,194.72	3,915.36	-3,377.72	4,831.61	0.00	0.00	0.00
13,900.03	89.83	359.90	7,195.02	4,015.36	-3,377.89	4,925.70	0.00	0.00	0.00
14,000.03	89.83	359.90	7,195.32	4,115.36	-3,378.06	5,019.78	0.00	0.00	0.00
14,100.03	89.83	359.90	7,195.62	4,215.36	-3,378.23	5,113.86	0.00	0.00	0.00
14,200.03	89.83	359.90	7,195.92	4,315.36	-3,378.40	5,207.94	0.00	0.00	0.00
14,300.03	89.83	359.90	7,196.22	4,415.36	-3,378.57	5,302.02	0.00	0.00	0.00
14,400.03	89.83	359.90	7,196.52	4,515.35	-3,378.74	5,396.10	0.00	0.00	0.00
14,500.03	89.83	359.90	7,196.82	4,615.35	-3,378.91	5,490.18	0.00	0.00	0.00
14,600.03	89.83	359.90	7,197.12	4,715.35	-3,379.08	5,584.26	0.00	0.00	0.00
14,700.03	89.83	359.90	7,197.42	4,815.35	-3,379.25	5,678.34	0.00	0.00	0.00
14,800.03	89.83	359.90	7,197.72	4,915.35	-3,379.42	5,772.42	0.00	0.00	0.00
14,900.03	89.83	359.90	7,198.02	5,015.35	-3,379.59	5,866.50	0.00	0.00	0.00

<b>Database:</b>	DB_Aug0116_LT_v14	<b>Local Co-ordinate Reference:</b>	Well Buford 33-05-1L
<b>Company:</b>	Confluence Resources	<b>TVD Reference:</b>	RKB=5136+25 @ 5161.00ft
<b>Project:</b>	Weld County, Colorado	<b>MD Reference:</b>	RKB=5136+25 @ 5161.00ft
<b>Site:</b>	Section 34-T01N-R65W	<b>North Reference:</b>	Grid
<b>Well:</b>	Buford 33-05-1L	<b>Survey Calculation Method:</b>	Minimum Curvature
<b>Wellbore:</b>	Original Hole		
<b>Design:</b>	plan1		

Planned Survey									
Measured Depth (ft)	Inclination (°)	Azimuth (°)	Vertical Depth (ft)	+N/-S (ft)	+E/-W (ft)	Vertical Section (ft)	Dogleg Rate (°/100ft)	Build Rate (°/100ft)	Turn Rate (°/100ft)
15,000.03	89.83	359.90	7,198.32	5,115.35	-3,379.76	5,960.58	0.00	0.00	0.00
15,100.03	89.83	359.90	7,198.63	5,215.35	-3,379.94	6,054.66	0.00	0.00	0.00
15,200.03	89.83	359.90	7,198.93	5,315.35	-3,380.11	6,148.74	0.00	0.00	0.00
15,300.03	89.83	359.90	7,199.23	5,415.35	-3,380.28	6,242.82	0.00	0.00	0.00
15,400.03	89.83	359.90	7,199.53	5,515.35	-3,380.45	6,336.90	0.00	0.00	0.00
15,500.03	89.83	359.90	7,199.83	5,615.35	-3,380.62	6,430.98	0.00	0.00	0.00
15,600.03	89.83	359.90	7,200.13	5,715.35	-3,380.79	6,525.06	0.00	0.00	0.00
15,700.03	89.83	359.90	7,200.43	5,815.35	-3,380.96	6,619.14	0.00	0.00	0.00
15,800.03	89.83	359.90	7,200.73	5,915.35	-3,381.13	6,713.22	0.00	0.00	0.00
15,900.03	89.83	359.90	7,201.03	6,015.35	-3,381.30	6,807.30	0.00	0.00	0.00
16,000.03	89.83	359.90	7,201.33	6,115.35	-3,381.47	6,901.38	0.00	0.00	0.00
16,100.03	89.83	359.90	7,201.63	6,215.35	-3,381.64	6,995.46	0.00	0.00	0.00
16,200.03	89.83	359.90	7,201.93	6,315.35	-3,381.81	7,089.54	0.00	0.00	0.00
16,300.03	89.83	359.90	7,202.23	6,415.35	-3,381.98	7,183.62	0.00	0.00	0.00
16,400.03	89.83	359.90	7,202.53	6,515.35	-3,382.15	7,277.70	0.00	0.00	0.00
16,500.03	89.83	359.90	7,202.83	6,615.35	-3,382.32	7,371.78	0.00	0.00	0.00
16,600.03	89.83	359.90	7,203.13	6,715.35	-3,382.49	7,465.86	0.00	0.00	0.00
16,700.03	89.83	359.90	7,203.43	6,815.35	-3,382.67	7,559.94	0.00	0.00	0.00
16,800.03	89.83	359.90	7,203.73	6,915.35	-3,382.84	7,654.02	0.00	0.00	0.00
16,900.03	89.83	359.90	7,204.03	7,015.34	-3,383.01	7,748.10	0.00	0.00	0.00
17,000.03	89.83	359.90	7,204.33	7,115.34	-3,383.18	7,842.18	0.00	0.00	0.00
17,100.03	89.83	359.90	7,204.63	7,215.34	-3,383.35	7,936.26	0.00	0.00	0.00
17,200.03	89.83	359.90	7,204.93	7,315.34	-3,383.52	8,030.34	0.00	0.00	0.00
17,300.03	89.83	359.90	7,205.23	7,415.34	-3,383.69	8,124.42	0.00	0.00	0.00
17,400.04	89.83	359.90	7,205.53	7,515.34	-3,383.86	8,218.50	0.00	0.00	0.00
17,500.04	89.83	359.90	7,205.83	7,615.34	-3,384.03	8,312.58	0.00	0.00	0.00
17,600.04	89.83	359.90	7,206.13	7,715.34	-3,384.20	8,406.66	0.00	0.00	0.00
17,700.04	89.83	359.90	7,206.43	7,815.34	-3,384.37	8,500.74	0.00	0.00	0.00
17,800.04	89.83	359.90	7,206.73	7,915.34	-3,384.54	8,594.82	0.00	0.00	0.00
17,900.04	89.83	359.90	7,207.03	8,015.34	-3,384.71	8,688.90	0.00	0.00	0.00
18,000.04	89.83	359.90	7,207.33	8,115.34	-3,384.88	8,782.98	0.00	0.00	0.00
18,100.04	89.83	359.90	7,207.63	8,215.34	-3,385.05	8,877.06	0.00	0.00	0.00
18,200.04	89.83	359.90	7,207.93	8,315.34	-3,385.22	8,971.14	0.00	0.00	0.00
18,300.04	89.83	359.90	7,208.23	8,415.34	-3,385.40	9,065.22	0.00	0.00	0.00
18,400.04	89.83	359.90	7,208.53	8,515.34	-3,385.57	9,159.30	0.00	0.00	0.00
18,500.04	89.83	359.90	7,208.83	8,615.34	-3,385.74	9,253.38	0.00	0.00	0.00
18,600.04	89.83	359.90	7,209.13	8,715.34	-3,385.91	9,347.46	0.00	0.00	0.00
18,700.04	89.83	359.90	7,209.43	8,815.34	-3,386.08	9,441.54	0.00	0.00	0.00
18,800.04	89.83	359.90	7,209.73	8,915.34	-3,386.25	9,535.62	0.00	0.00	0.00
18,900.04	89.83	359.90	7,210.03	9,015.34	-3,386.42	9,629.70	0.00	0.00	0.00
19,000.04	89.83	359.90	7,210.33	9,115.34	-3,386.59	9,723.78	0.00	0.00	0.00
19,100.04	89.83	359.90	7,210.63	9,215.34	-3,386.76	9,817.86	0.00	0.00	0.00
19,200.04	89.83	359.90	7,210.93	9,315.34	-3,386.93	9,911.94	0.00	0.00	0.00
19,219.90	89.83	359.90	7,210.99	9,335.20	-3,386.96	9,930.63	0.00	0.00	0.00
<b>PBHL/TD 19219.90 MD 7211.00 TVD</b>									
19,235.69	89.83	359.90	7,211.04	9,350.99	-3,386.99	9,945.49	0.00	0.00	0.00

<b>Database:</b>	DB_Aug0116_LT_v14	<b>Local Co-ordinate Reference:</b>	Well Buford 33-05-1L
<b>Company:</b>	Confluence Resources	<b>TVD Reference:</b>	RKB=5136+25 @ 5161.00ft
<b>Project:</b>	Weld County, Colorado	<b>MD Reference:</b>	RKB=5136+25 @ 5161.00ft
<b>Site:</b>	Section 34-T01N-R65W	<b>North Reference:</b>	Grid
<b>Well:</b>	Buford 33-05-1L	<b>Survey Calculation Method:</b>	Minimum Curvature
<b>Wellbore:</b>	Original Hole		
<b>Design:</b>	plan1		

Design Targets									
Target Name	Dip Angle	Dip Dir.	TVD	+N/-S	+E/-W	Northing	Easting	Latitude	Longitude
- hit/miss target	(°)	(°)	(ft)	(ft)	(ft)	(usft)	(usft)		
- Shape									
LP Buford 33-05-1L 470	0.00	359.79	7,182.00	-322.60	-3,370.49	14,527,570.30	1,733,179.82	40.00182473	-104.66875480
- plan hits target center									
- Point									
BHL Buford 33-05-1L 47	0.00	359.79	7,211.00	9,337.52	-3,424.18	14,537,230.40	1,733,126.13	40.02835327	-104.66881831
- plan misses target center by 37.28ft at 19219.90ft MD (7210.99 TVD, 9335.20 N, -3386.96 E)									
- Point									

Plan Annotations				
Measured Depth	Vertical Depth	Local Coordinates		Comment
(ft)	(ft)	+N/-S (ft)	+E/-W (ft)	
5,000.00	5,000.00	0.00	0.00	KOP Begin 10°/100' build
5,626.01	5,508.68	-94.11	-294.63	Begin 62.60° tangent section
8,506.78	6,833.18	-872.52	-2,731.56	Begin 10°/100' build/turn
9,559.59	7,181.99	-325.05	-3,370.48	LP Begin 89.83° lateral section
19,219.90	7,210.99	9,335.20	-3,386.96	PBHL/TD 19219.90 MD 7211.00 TVD

<b>Database:</b>	DB_Aug0116_LT_v14	<b>Local Co-ordinate Reference:</b>	Well Buford 33-05-1L
<b>Company:</b>	Confluence Resources	<b>TVD Reference:</b>	RKB=5136+25 @ 5161.00ft
<b>Project:</b>	Weld County, Colorado	<b>MD Reference:</b>	RKB=5136+25 @ 5161.00ft
<b>Site:</b>	Section 34-T01N-R65W	<b>North Reference:</b>	Grid
<b>Well:</b>	Buford 33-05-1L	<b>Survey Calculation Method:</b>	Minimum Curvature
<b>Wellbore:</b>	Original Hole		
<b>Design:</b>	plan1		

<b>Project</b>	Weld County, Colorado		
<b>Map System:</b>	Universal Transverse Mercator (US Survey Feet)	<b>System Datum:</b>	Mean Sea Level
<b>Geo Datum:</b>	NAD83 Colorado - HARN		
<b>Map Zone:</b>	Zone 13N (108 W to 102 W)		

Site		Section 34-T01N-R65W			
Site Position:		Northing:	14,527,892.80 usft	Latitude:	40.00267560
From:	Map	Easting:	1,736,525.30 usft	Longitude:	-104.65680429
Position Uncertainty:	0.00 ft	Slot Radius:	13-3/16 "	Grid Convergence:	0.22 °

Well	Buford 33-05-1L, Surf loc: 770 FSL 794 FWL Section 34-T01N-R65W					
Well Position	+N/-S	0.00 ft	Northing:	14,527,892.90 usft	Latitude:	40.00267561
	+E/-W	0.00 ft	Easting:	1,736,550.30 usft	Longitude:	-104.65671501
Position Uncertainty		0.00 ft	Wellhead Elevation:		Ground Level:	5,136.00 ft

<b>Wellbore</b>	Original Hole				
<b>Magnetics</b>	<b>Model Name</b>	<b>Sample Date</b>	<b>Declination (°)</b>	<b>Dip Angle (°)</b>	<b>Field Strength (nT)</b>
	HDGM	6/5/2017	8.28	66.45	52,139.20000000

<b>Design</b>	plan1			
<b>Audit Notes:</b>				
<b>Version:</b>	<b>Phase:</b>	PLAN	<b>Tie On Depth:</b>	0.00
<b>Vertical Section:</b>	<b>Depth From (TVD) (ft)</b>	<b>+N/-S (ft)</b>	<b>+E/-W (ft)</b>	<b>Direction (°)</b>
	0.00	0.00	0.00	340.09

<b>Plan Survey Tool Program</b>	<b>Date</b>			
<b>Depth From (ft)</b>	<b>Depth To (ft)</b>	<b>Survey (Wellbore)</b>	<b>Tool Name</b>	<b>Remarks</b>
1	0.00	19,219.90 plan1 (Original Hole)		

<b>Plan Sections</b>										
<b>Measured Depth (ft)</b>	<b>Inclination (°)</b>	<b>Azimuth (°)</b>	<b>Vertical Depth (ft)</b>	<b>+N/-S (ft)</b>	<b>+E/-W (ft)</b>	<b>Dogleg Rate (°/100ft)</b>	<b>Build Rate (°/100ft)</b>	<b>Turn Rate (°/100ft)</b>	<b>TFO (°)</b>	<b>Target</b>
0.00	0.00	0.00	0.00	0.00	0.00	0.00	0.00	0.00	0.00	
5,000.00	0.00	0.00	5,000.00	0.00	0.00	0.00	0.00	0.00	0.00	
5,626.28	62.63	252.29	5,508.81	-94.18	-294.85	10.00	10.00	0.00	252.29	
8,506.96	62.63	252.29	6,833.26	-872.56	-2,731.71	0.00	0.00	0.00	0.00	
9,562.04	89.83	359.90	7,182.00	-322.60	-3,370.49	10.00	2.58	10.20	98.46	LP Buford 33-05-1L 4'
19,235.69	89.83	359.90	7,211.04	9,350.99	-3,386.99	0.00	0.00	0.00	0.00	BHL Buford 33-05-1L



<b>Database:</b>	DB_Aug0116_LT_v14	<b>Local Co-ordinate Reference:</b>	Well Buford 33-05-1L
<b>Company:</b>	Confluence Resources	<b>TVD Reference:</b>	RKB=5136+25 @ 5161.00ft
<b>Project:</b>	Weld County, Colorado	<b>MD Reference:</b>	RKB=5136+25 @ 5161.00ft
<b>Site:</b>	Section 34-T01N-R65W	<b>North Reference:</b>	Grid
<b>Well:</b>	Buford 33-05-1L	<b>Survey Calculation Method:</b>	Minimum Curvature
<b>Wellbore:</b>	Original Hole		
<b>Design:</b>	plan1		

Planned Survey									
Measured Depth (ft)	Inclination (°)	Azimuth (°)	Vertical Depth (ft)	+N/-S (ft)	+E/-W (ft)	Map Northing (usft)	Map Easting (usft)	Latitude	Longitude
0.00	0.00	0.00	0.00	0.00	0.00	14,527,892.90	1,736,550.30	40.00267561	-104.65671501
100.00	0.00	0.00	100.00	0.00	0.00	14,527,892.90	1,736,550.30	40.00267561	-104.65671501
200.00	0.00	0.00	200.00	0.00	0.00	14,527,892.90	1,736,550.30	40.00267561	-104.65671501
300.00	0.00	0.00	300.00	0.00	0.00	14,527,892.90	1,736,550.30	40.00267561	-104.65671501
400.00	0.00	0.00	400.00	0.00	0.00	14,527,892.90	1,736,550.30	40.00267561	-104.65671501
500.00	0.00	0.00	500.00	0.00	0.00	14,527,892.90	1,736,550.30	40.00267561	-104.65671501
600.00	0.00	0.00	600.00	0.00	0.00	14,527,892.90	1,736,550.30	40.00267561	-104.65671501
700.00	0.00	0.00	700.00	0.00	0.00	14,527,892.90	1,736,550.30	40.00267561	-104.65671501
800.00	0.00	0.00	800.00	0.00	0.00	14,527,892.90	1,736,550.30	40.00267561	-104.65671501
900.00	0.00	0.00	900.00	0.00	0.00	14,527,892.90	1,736,550.30	40.00267561	-104.65671501
1,000.00	0.00	0.00	1,000.00	0.00	0.00	14,527,892.90	1,736,550.30	40.00267561	-104.65671501
1,100.00	0.00	0.00	1,100.00	0.00	0.00	14,527,892.90	1,736,550.30	40.00267561	-104.65671501
1,200.00	0.00	0.00	1,200.00	0.00	0.00	14,527,892.90	1,736,550.30	40.00267561	-104.65671501
1,300.00	0.00	0.00	1,300.00	0.00	0.00	14,527,892.90	1,736,550.30	40.00267561	-104.65671501
1,400.00	0.00	0.00	1,400.00	0.00	0.00	14,527,892.90	1,736,550.30	40.00267561	-104.65671501
1,500.00	0.00	0.00	1,500.00	0.00	0.00	14,527,892.90	1,736,550.30	40.00267561	-104.65671501
1,600.00	0.00	0.00	1,600.00	0.00	0.00	14,527,892.90	1,736,550.30	40.00267561	-104.65671501
1,700.00	0.00	0.00	1,700.00	0.00	0.00	14,527,892.90	1,736,550.30	40.00267561	-104.65671501
1,800.00	0.00	0.00	1,800.00	0.00	0.00	14,527,892.90	1,736,550.30	40.00267561	-104.65671501
1,900.00	0.00	0.00	1,900.00	0.00	0.00	14,527,892.90	1,736,550.30	40.00267561	-104.65671501
2,000.00	0.00	0.00	2,000.00	0.00	0.00	14,527,892.90	1,736,550.30	40.00267561	-104.65671501
2,100.00	0.00	0.00	2,100.00	0.00	0.00	14,527,892.90	1,736,550.30	40.00267561	-104.65671501
2,200.00	0.00	0.00	2,200.00	0.00	0.00	14,527,892.90	1,736,550.30	40.00267561	-104.65671501
2,300.00	0.00	0.00	2,300.00	0.00	0.00	14,527,892.90	1,736,550.30	40.00267561	-104.65671501
2,400.00	0.00	0.00	2,400.00	0.00	0.00	14,527,892.90	1,736,550.30	40.00267561	-104.65671501
2,500.01	0.00	0.00	2,500.01	0.00	0.00	14,527,892.90	1,736,550.30	40.00267561	-104.65671501
2,600.01	0.00	0.00	2,600.01	0.00	0.00	14,527,892.90	1,736,550.30	40.00267561	-104.65671501
2,700.01	0.00	0.00	2,700.01	0.00	0.00	14,527,892.90	1,736,550.30	40.00267561	-104.65671501
2,800.01	0.00	0.00	2,800.01	0.00	0.00	14,527,892.90	1,736,550.30	40.00267561	-104.65671501
2,900.01	0.00	0.00	2,900.01	0.00	0.00	14,527,892.90	1,736,550.30	40.00267561	-104.65671501
3,000.01	0.00	0.00	3,000.01	0.00	0.00	14,527,892.90	1,736,550.30	40.00267561	-104.65671501
3,100.01	0.00	0.00	3,100.01	0.00	0.00	14,527,892.90	1,736,550.30	40.00267561	-104.65671501
3,200.01	0.00	0.00	3,200.01	0.00	0.00	14,527,892.90	1,736,550.30	40.00267561	-104.65671501
3,300.01	0.00	0.00	3,300.01	0.00	0.00	14,527,892.90	1,736,550.30	40.00267561	-104.65671501
3,400.01	0.00	0.00	3,400.01	0.00	0.00	14,527,892.90	1,736,550.30	40.00267561	-104.65671501
3,500.01	0.00	0.00	3,500.01	0.00	0.00	14,527,892.90	1,736,550.30	40.00267561	-104.65671501
3,600.01	0.00	0.00	3,600.01	0.00	0.00	14,527,892.90	1,736,550.30	40.00267561	-104.65671501
3,700.01	0.00	0.00	3,700.01	0.00	0.00	14,527,892.90	1,736,550.30	40.00267561	-104.65671501
3,800.01	0.00	0.00	3,800.01	0.00	0.00	14,527,892.90	1,736,550.30	40.00267561	-104.65671501
3,900.01	0.00	0.00	3,900.01	0.00	0.00	14,527,892.90	1,736,550.30	40.00267561	-104.65671501
4,000.01	0.00	0.00	4,000.01	0.00	0.00	14,527,892.90	1,736,550.30	40.00267561	-104.65671501
4,100.01	0.00	0.00	4,100.01	0.00	0.00	14,527,892.90	1,736,550.30	40.00267561	-104.65671501
4,200.01	0.00	0.00	4,200.01	0.00	0.00	14,527,892.90	1,736,550.30	40.00267561	-104.65671501
4,300.01	0.00	0.00	4,300.01	0.00	0.00	14,527,892.90	1,736,550.30	40.00267561	-104.65671501
4,400.01	0.00	0.00	4,400.01	0.00	0.00	14,527,892.90	1,736,550.30	40.00267561	-104.65671501
4,500.01	0.00	0.00	4,500.01	0.00	0.00	14,527,892.90	1,736,550.30	40.00267561	-104.65671501
4,600.01	0.00	0.00	4,600.01	0.00	0.00	14,527,892.90	1,736,550.30	40.00267561	-104.65671501
4,700.01	0.00	0.00	4,700.01	0.00	0.00	14,527,892.90	1,736,550.30	40.00267561	-104.65671501
4,800.01	0.00	0.00	4,800.01	0.00	0.00	14,527,892.90	1,736,550.30	40.00267561	-104.65671501
4,900.01	0.00	0.00	4,900.01	0.00	0.00	14,527,892.90	1,736,550.30	40.00267561	-104.65671501
5,000.00	0.00	0.00	5,000.00	0.00	0.00	14,527,892.90	1,736,550.30	40.00267561	-104.65671501
KOP Begin 10°/100' build									
5,000.01	0.00	252.29	5,000.01	0.00	0.00	14,527,892.90	1,736,550.30	40.00267561	-104.65671501
5,100.01	10.00	252.29	5,099.50	-2.65	-8.29	14,527,890.26	1,736,542.01	40.00266842	-104.65674466

<b>Database:</b>	DB_Aug0116_LT_v14	<b>Local Co-ordinate Reference:</b>	Well Buford 33-05-1L
<b>Company:</b>	Confluence Resources	<b>TVD Reference:</b>	RKB=5136+25 @ 5161.00ft
<b>Project:</b>	Weld County, Colorado	<b>MD Reference:</b>	RKB=5136+25 @ 5161.00ft
<b>Site:</b>	Section 34-T01N-R65W	<b>North Reference:</b>	Grid
<b>Well:</b>	Buford 33-05-1L	<b>Survey Calculation Method:</b>	Minimum Curvature
<b>Wellbore:</b>	Original Hole		
<b>Design:</b>	plan1		

Planned Survey									
Measured Depth (ft)	Inclination (°)	Azimuth (°)	Vertical Depth (ft)	+N/-S (ft)	+E/-W (ft)	Map Northing (usft)	Map Easting (usft)	Latitude	Longitude
5,200.01	20.00	252.29	5,195.97	-10.51	-32.92	14,527,882.39	1,736,517.38	40.00264708	-104.65683271
5,300.01	30.00	252.29	5,286.49	-23.36	-73.13	14,527,869.55	1,736,477.17	40.00261224	-104.65697646
5,400.01	40.00	252.29	5,368.30	-40.79	-127.70	14,527,852.12	1,736,422.60	40.00256495	-104.65717156
5,500.01	50.00	252.29	5,438.92	-62.28	-194.97	14,527,830.63	1,736,355.33	40.00250665	-104.65741208
5,600.01	60.00	252.29	5,496.20	-87.17	-272.90	14,527,805.73	1,736,277.39	40.00243911	-104.65769071
5,626.01	62.60	252.29	5,508.68	-94.11	-294.63	14,527,798.80	1,736,255.67	40.00242029	-104.65776836
Begin 62.60° tangent section									
5,626.28	62.63	252.29	5,508.81	-94.18	-294.85	14,527,798.72	1,736,255.45	40.00242009	-104.65776918
5,700.01	62.63	252.29	5,542.71	-114.11	-357.23	14,527,778.80	1,736,193.07	40.00236603	-104.65799218
5,800.01	62.63	252.29	5,588.69	-141.13	-441.82	14,527,751.78	1,736,108.48	40.00229272	-104.65829462
5,900.01	62.63	252.29	5,634.66	-168.15	-526.41	14,527,724.76	1,736,023.89	40.00221941	-104.65859705
6,000.01	62.63	252.29	5,680.64	-195.17	-611.01	14,527,697.74	1,735,939.29	40.00214610	-104.65889949
6,100.01	62.63	252.29	5,726.62	-222.19	-695.60	14,527,670.72	1,735,854.70	40.00207278	-104.65920193
6,200.01	62.63	252.29	5,772.59	-249.21	-780.19	14,527,643.70	1,735,770.11	40.00199947	-104.65950436
6,300.01	62.63	252.29	5,818.57	-276.23	-864.79	14,527,616.68	1,735,685.51	40.00192615	-104.65980680
6,400.01	62.63	252.29	5,864.55	-303.25	-949.38	14,527,589.65	1,735,600.92	40.00185283	-104.66010923
6,500.01	62.63	252.29	5,910.53	-330.27	-1,033.97	14,527,562.63	1,735,516.33	40.00177952	-104.66041167
6,600.01	62.63	252.29	5,956.50	-357.29	-1,118.57	14,527,535.61	1,735,431.73	40.00170620	-104.66071410
6,700.01	62.63	252.29	6,002.48	-384.31	-1,203.16	14,527,508.59	1,735,347.14	40.00163288	-104.66101653
6,800.01	62.63	252.29	6,048.46	-411.33	-1,287.75	14,527,481.57	1,735,262.55	40.00155956	-104.66131896
6,900.01	62.63	252.29	6,094.43	-438.36	-1,372.35	14,527,454.55	1,735,177.96	40.00148624	-104.66162140
7,000.01	62.63	252.29	6,140.41	-465.38	-1,456.94	14,527,427.53	1,735,093.36	40.00141292	-104.66192383
7,100.01	62.63	252.29	6,186.39	-492.40	-1,541.53	14,527,400.51	1,735,008.77	40.00133960	-104.66222626
7,200.01	62.63	252.29	6,232.36	-519.42	-1,626.13	14,527,373.49	1,734,924.18	40.00126627	-104.66252869
7,300.01	62.63	252.29	6,278.34	-546.44	-1,710.72	14,527,346.47	1,734,839.58	40.00119295	-104.66283111
7,400.01	62.63	252.29	6,324.32	-573.46	-1,795.31	14,527,319.45	1,734,754.99	40.00111962	-104.66313354
7,500.02	62.63	252.29	6,370.30	-600.48	-1,879.91	14,527,292.43	1,734,670.40	40.00104630	-104.66343597
7,600.02	62.63	252.29	6,416.27	-627.50	-1,964.50	14,527,265.41	1,734,585.80	40.00097297	-104.66373840
7,700.02	62.63	252.29	6,462.25	-654.52	-2,049.09	14,527,238.38	1,734,501.21	40.00089965	-104.66404082
7,800.02	62.63	252.29	6,508.23	-681.54	-2,133.69	14,527,211.36	1,734,416.62	40.00082632	-104.66434325
7,900.02	62.63	252.29	6,554.20	-708.56	-2,218.28	14,527,184.34	1,734,332.02	40.00075299	-104.66464567
8,000.02	62.63	252.29	6,600.18	-735.58	-2,302.87	14,527,157.32	1,734,247.43	40.00067966	-104.66494810
8,100.02	62.63	252.29	6,646.16	-762.60	-2,387.47	14,527,130.30	1,734,162.84	40.00060633	-104.66525052
8,200.02	62.63	252.29	6,692.14	-789.63	-2,472.06	14,527,103.28	1,734,078.24	40.00053300	-104.66555294
8,300.02	62.63	252.29	6,738.11	-816.65	-2,556.65	14,527,076.26	1,733,993.65	40.00045967	-104.66585537
8,400.02	62.63	252.29	6,784.09	-843.67	-2,641.25	14,527,049.24	1,733,909.06	40.00038633	-104.66615779
8,500.02	62.63	252.29	6,830.07	-870.69	-2,725.84	14,527,022.22	1,733,824.47	40.00031300	-104.66646021
8,506.78	62.63	252.29	6,833.18	-872.52	-2,731.56	14,527,020.39	1,733,818.74	40.00030804	-104.66648066
Begin 10°/100' build/turn									
8,506.96	62.63	252.29	6,833.26	-872.56	-2,731.71	14,527,020.34	1,733,818.59	40.00030791	-104.66648120
8,600.02	61.65	262.75	6,876.84	-890.34	-2,811.87	14,527,002.57	1,733,738.43	40.00025992	-104.66676766
8,700.02	61.50	274.13	6,924.56	-892.73	-2,899.57	14,527,000.18	1,733,650.73	40.00025426	-104.66708086
8,800.02	62.30	285.43	6,971.78	-877.74	-2,986.29	14,527,015.16	1,733,564.01	40.00029630	-104.66739031
8,900.02	63.99	296.48	7,017.07	-845.84	-3,069.39	14,527,047.07	1,733,480.91	40.00038476	-104.66768662
9,000.02	66.49	307.15	7,059.05	-797.99	-3,146.35	14,527,094.92	1,733,403.95	40.00051696	-104.66796078
9,100.02	69.69	317.37	7,096.44	-735.64	-3,214.83	14,527,157.27	1,733,335.48	40.00068888	-104.66820447
9,200.02	73.46	327.13	7,128.11	-660.69	-3,272.75	14,527,232.22	1,733,277.56	40.00089530	-104.66841027
9,300.02	77.66	336.51	7,153.10	-575.41	-3,318.34	14,527,317.49	1,733,231.97	40.00112993	-104.66857194
9,400.02	82.17	345.58	7,170.64	-482.41	-3,350.22	14,527,410.50	1,733,200.08	40.00138567	-104.66868457
9,500.02	86.87	354.45	7,180.21	-384.50	-3,367.44	14,527,508.41	1,733,182.87	40.00165473	-104.66874472
9,559.59	89.71	359.69	7,181.99	-325.05	-3,370.48	14,527,567.85	1,733,179.83	40.00181799	-104.66875480
LP Begin 89.83° lateral section									
9,562.04	89.83	359.90	7,182.00	-322.60	-3,370.49	14,527,570.30	1,733,179.82	40.00182473	-104.66875480
9,600.02	89.83	359.90	7,182.11	-284.63	-3,370.55	14,527,608.28	1,733,179.75	40.00192901	-104.66875452



<b>Database:</b>	DB_Aug0116_LT_v14	<b>Local Co-ordinate Reference:</b>	Well Buford 33-05-1L
<b>Company:</b>	Confluence Resources	<b>TVD Reference:</b>	RKB=5136+25 @ 5161.00ft
<b>Project:</b>	Weld County, Colorado	<b>MD Reference:</b>	RKB=5136+25 @ 5161.00ft
<b>Site:</b>	Section 34-T01N-R65W	<b>North Reference:</b>	Grid
<b>Well:</b>	Buford 33-05-1L	<b>Survey Calculation Method:</b>	Minimum Curvature
<b>Wellbore:</b>	Original Hole		
<b>Design:</b>	plan1		

Planned Survey									
Measured Depth (ft)	Inclination (°)	Azimuth (°)	Vertical Depth (ft)	+N/-S (ft)	+E/-W (ft)	Map Northing (usft)	Map Easting (usft)	Latitude	Longitude
9,700.02	89.83	359.90	7,182.41	-184.63	-3,370.72	14,527,708.28	1,733,179.58	40.00220363	-104.66875381
9,800.02	89.83	359.90	7,182.71	-84.63	-3,370.89	14,527,808.28	1,733,179.41	40.00247824	-104.66875309
9,900.02	89.83	359.90	7,183.01	15.37	-3,371.06	14,527,908.28	1,733,179.24	40.00275286	-104.66875237
10,000.02	89.83	359.90	7,183.31	115.37	-3,371.23	14,528,008.28	1,733,179.07	40.00302747	-104.66875165
10,100.02	89.83	359.90	7,183.62	215.37	-3,371.40	14,528,108.28	1,733,178.90	40.00330209	-104.66875094
10,200.02	89.83	359.90	7,183.92	315.37	-3,371.58	14,528,208.28	1,733,178.73	40.00357670	-104.66875022
10,300.02	89.83	359.90	7,184.22	415.37	-3,371.75	14,528,308.27	1,733,178.56	40.00385131	-104.66874950
10,400.02	89.83	359.90	7,184.52	515.37	-3,371.92	14,528,408.27	1,733,178.39	40.00412593	-104.66874878
10,500.02	89.83	359.90	7,184.82	615.37	-3,372.09	14,528,508.27	1,733,178.22	40.00440054	-104.66874806
10,600.02	89.83	359.90	7,185.12	715.37	-3,372.26	14,528,608.27	1,733,178.05	40.00467516	-104.66874735
10,700.02	89.83	359.90	7,185.42	815.37	-3,372.43	14,528,708.27	1,733,177.88	40.00494977	-104.66874663
10,800.02	89.83	359.90	7,185.72	915.37	-3,372.60	14,528,808.27	1,733,177.71	40.00522439	-104.66874591
10,900.02	89.83	359.90	7,186.02	1,015.37	-3,372.77	14,528,908.27	1,733,177.54	40.00549900	-104.66874519
11,000.02	89.83	359.90	7,186.32	1,115.37	-3,372.94	14,529,008.27	1,733,177.37	40.00577362	-104.66874447
11,100.02	89.83	359.90	7,186.62	1,215.37	-3,373.11	14,529,108.27	1,733,177.19	40.00604823	-104.66874376
11,200.02	89.83	359.90	7,186.92	1,315.37	-3,373.28	14,529,208.27	1,733,177.02	40.00632285	-104.66874304
11,300.02	89.83	359.90	7,187.22	1,415.37	-3,373.45	14,529,308.27	1,733,176.85	40.00659746	-104.66874232
11,400.02	89.83	359.90	7,187.52	1,515.37	-3,373.62	14,529,408.27	1,733,176.68	40.00687207	-104.66874160
11,500.02	89.83	359.90	7,187.82	1,615.37	-3,373.79	14,529,508.27	1,733,176.51	40.00714669	-104.66874088
11,600.02	89.83	359.90	7,188.12	1,715.37	-3,373.96	14,529,608.27	1,733,176.34	40.00742130	-104.66874017
11,700.02	89.83	359.90	7,188.42	1,815.37	-3,374.13	14,529,708.27	1,733,176.17	40.00769592	-104.66873945
11,800.02	89.83	359.90	7,188.72	1,915.36	-3,374.31	14,529,808.27	1,733,176.00	40.00797053	-104.66873873
11,900.02	89.83	359.90	7,189.02	2,015.36	-3,374.48	14,529,908.27	1,733,175.83	40.00824515	-104.66873801
12,000.02	89.83	359.90	7,189.32	2,115.36	-3,374.65	14,530,008.26	1,733,175.66	40.00851976	-104.66873729
12,100.02	89.83	359.90	7,189.62	2,215.36	-3,374.82	14,530,108.26	1,733,175.49	40.00879438	-104.66873658
12,200.02	89.83	359.90	7,189.92	2,315.36	-3,374.99	14,530,208.26	1,733,175.32	40.00906899	-104.66873586
12,300.02	89.83	359.90	7,190.22	2,415.36	-3,375.16	14,530,308.26	1,733,175.15	40.00934361	-104.66873514
12,400.03	89.83	359.90	7,190.52	2,515.36	-3,375.33	14,530,408.26	1,733,174.98	40.00961822	-104.66873442
12,500.03	89.83	359.90	7,190.82	2,615.36	-3,375.50	14,530,508.26	1,733,174.81	40.00989283	-104.66873370
12,600.03	89.83	359.90	7,191.12	2,715.36	-3,375.67	14,530,608.26	1,733,174.64	40.01016745	-104.66873298
12,700.03	89.83	359.90	7,191.42	2,815.36	-3,375.84	14,530,708.26	1,733,174.46	40.01044206	-104.66873227
12,800.03	89.83	359.90	7,191.72	2,915.36	-3,376.01	14,530,808.26	1,733,174.29	40.01071668	-104.66873155
12,900.03	89.83	359.90	7,192.02	3,015.36	-3,376.18	14,530,908.26	1,733,174.12	40.01099129	-104.66873083
13,000.03	89.83	359.90	7,192.32	3,115.36	-3,376.35	14,531,008.26	1,733,173.95	40.01126591	-104.66873011
13,100.03	89.83	359.90	7,192.62	3,215.36	-3,376.52	14,531,108.26	1,733,173.78	40.01154052	-104.66872939
13,200.03	89.83	359.90	7,192.92	3,315.36	-3,376.69	14,531,208.26	1,733,173.61	40.01181513	-104.66872867
13,300.03	89.83	359.90	7,193.22	3,415.36	-3,376.86	14,531,308.26	1,733,173.44	40.01208975	-104.66872796
13,400.03	89.83	359.90	7,193.52	3,515.36	-3,377.03	14,531,408.26	1,733,173.27	40.01236436	-104.66872724
13,500.03	89.83	359.90	7,193.82	3,615.36	-3,377.21	14,531,508.26	1,733,173.10	40.01263898	-104.66872652
13,600.03	89.83	359.90	7,194.12	3,715.36	-3,377.38	14,531,608.26	1,733,172.93	40.01291359	-104.66872580
13,700.03	89.83	359.90	7,194.42	3,815.36	-3,377.55	14,531,708.25	1,733,172.76	40.01318821	-104.66872508
13,800.03	89.83	359.90	7,194.72	3,915.36	-3,377.72	14,531,808.25	1,733,172.59	40.01346282	-104.66872436
13,900.03	89.83	359.90	7,195.02	4,015.36	-3,377.89	14,531,908.25	1,733,172.42	40.01373743	-104.66872365
14,000.03	89.83	359.90	7,195.32	4,115.36	-3,378.06	14,532,008.25	1,733,172.25	40.01401205	-104.66872293
14,100.03	89.83	359.90	7,195.62	4,215.36	-3,378.23	14,532,108.25	1,733,172.08	40.01428666	-104.66872221
14,200.03	89.83	359.90	7,195.92	4,315.36	-3,378.40	14,532,208.25	1,733,171.91	40.01456128	-104.66872149
14,300.03	89.83	359.90	7,196.22	4,415.36	-3,378.57	14,532,308.25	1,733,171.74	40.01483589	-104.66872077
14,400.03	89.83	359.90	7,196.52	4,515.35	-3,378.74	14,532,408.25	1,733,171.56	40.01511050	-104.66872005
14,500.03	89.83	359.90	7,196.82	4,615.35	-3,378.91	14,532,508.25	1,733,171.39	40.01538512	-104.66871934
14,600.03	89.83	359.90	7,197.12	4,715.35	-3,379.08	14,532,608.25	1,733,171.22	40.01565973	-104.66871862
14,700.03	89.83	359.90	7,197.42	4,815.35	-3,379.25	14,532,708.25	1,733,171.05	40.01593435	-104.66871790
14,800.03	89.83	359.90	7,197.72	4,915.35	-3,379.42	14,532,808.25	1,733,170.88	40.01620896	-104.66871718
14,900.03	89.83	359.90	7,198.02	5,015.35	-3,379.59	14,532,908.25	1,733,170.71	40.01648358	-104.66871646
15,000.03	89.83	359.90	7,198.32	5,115.35	-3,379.76	14,533,008.25	1,733,170.54	40.01675819	-104.66871574
15,100.03	89.83	359.90	7,198.63	5,215.35	-3,379.94	14,533,108.25	1,733,170.37	40.01703280	-104.66871503

<b>Database:</b>	DB_Aug0116_LT_v14	<b>Local Co-ordinate Reference:</b>	Well Buford 33-05-1L
<b>Company:</b>	Confluence Resources	<b>TVD Reference:</b>	RKB=5136+25 @ 5161.00ft
<b>Project:</b>	Weld County, Colorado	<b>MD Reference:</b>	RKB=5136+25 @ 5161.00ft
<b>Site:</b>	Section 34-T01N-R65W	<b>North Reference:</b>	Grid
<b>Well:</b>	Buford 33-05-1L	<b>Survey Calculation Method:</b>	Minimum Curvature
<b>Wellbore:</b>	Original Hole		
<b>Design:</b>	plan1		

Planned Survey									
Measured Depth (ft)	Inclination (°)	Azimuth (°)	Vertical Depth (ft)	+N/-S (ft)	+E/-W (ft)	Map Northing (usft)	Map Easting (usft)	Latitude	Longitude
15,200.03	89.83	359.90	7,198.93	5,315.35	-3,380.11	14,533,208.25	1,733,170.20	40.01730742	-104.66871431
15,300.03	89.83	359.90	7,199.23	5,415.35	-3,380.28	14,533,308.24	1,733,170.03	40.01758203	-104.66871359
15,400.03	89.83	359.90	7,199.53	5,515.35	-3,380.45	14,533,408.24	1,733,169.86	40.01785665	-104.66871287
15,500.03	89.83	359.90	7,199.83	5,615.35	-3,380.62	14,533,508.24	1,733,169.69	40.01813126	-104.66871215
15,600.03	89.83	359.90	7,200.13	5,715.35	-3,380.79	14,533,608.24	1,733,169.52	40.01840587	-104.66871143
15,700.03	89.83	359.90	7,200.43	5,815.35	-3,380.96	14,533,708.24	1,733,169.35	40.01868049	-104.66871071
15,800.03	89.83	359.90	7,200.73	5,915.35	-3,381.13	14,533,808.24	1,733,169.18	40.01895510	-104.66871000
15,900.03	89.83	359.90	7,201.03	6,015.35	-3,381.30	14,533,908.24	1,733,169.01	40.01922972	-104.66870928
16,000.03	89.83	359.90	7,201.33	6,115.35	-3,381.47	14,534,008.24	1,733,168.83	40.01950433	-104.66870856
16,100.03	89.83	359.90	7,201.63	6,215.35	-3,381.64	14,534,108.24	1,733,168.66	40.01977894	-104.66870784
16,200.03	89.83	359.90	7,201.93	6,315.35	-3,381.81	14,534,208.24	1,733,168.49	40.02005356	-104.66870712
16,300.03	89.83	359.90	7,202.23	6,415.35	-3,381.98	14,534,308.24	1,733,168.32	40.02032817	-104.66870640
16,400.03	89.83	359.90	7,202.53	6,515.35	-3,382.15	14,534,408.24	1,733,168.15	40.02060278	-104.66870568
16,500.03	89.83	359.90	7,202.83	6,615.35	-3,382.32	14,534,508.24	1,733,167.98	40.02087740	-104.66870496
16,600.03	89.83	359.90	7,203.13	6,715.35	-3,382.49	14,534,608.24	1,733,167.81	40.02115201	-104.66870425
16,700.03	89.83	359.90	7,203.43	6,815.35	-3,382.67	14,534,708.24	1,733,167.64	40.02142663	-104.66870353
16,800.03	89.83	359.90	7,203.73	6,915.35	-3,382.84	14,534,808.24	1,733,167.47	40.02170124	-104.66870281
16,900.03	89.83	359.90	7,204.03	7,015.34	-3,383.01	14,534,908.24	1,733,167.30	40.02197585	-104.66870209
17,000.03	89.83	359.90	7,204.33	7,115.34	-3,383.18	14,535,008.23	1,733,167.13	40.02225047	-104.66870137
17,100.03	89.83	359.90	7,204.63	7,215.34	-3,383.35	14,535,108.23	1,733,166.96	40.02252508	-104.66870065
17,200.03	89.83	359.90	7,204.93	7,315.34	-3,383.52	14,535,208.23	1,733,166.79	40.02279970	-104.66869993
17,300.03	89.83	359.90	7,205.23	7,415.34	-3,383.69	14,535,308.23	1,733,166.62	40.02307431	-104.66869921
17,400.04	89.83	359.90	7,205.53	7,515.34	-3,383.86	14,535,408.23	1,733,166.45	40.02334892	-104.66869850
17,500.04	89.83	359.90	7,205.83	7,615.34	-3,384.03	14,535,508.23	1,733,166.28	40.02362354	-104.66869778
17,600.04	89.83	359.90	7,206.13	7,715.34	-3,384.20	14,535,608.23	1,733,166.10	40.02389815	-104.66869706
17,700.04	89.83	359.90	7,206.43	7,815.34	-3,384.37	14,535,708.23	1,733,165.93	40.02417276	-104.66869634
17,800.04	89.83	359.90	7,206.73	7,915.34	-3,384.54	14,535,808.23	1,733,165.76	40.02444738	-104.66869562
17,900.04	89.83	359.90	7,207.03	8,015.34	-3,384.71	14,535,908.23	1,733,165.59	40.02472199	-104.66869490
18,000.04	89.83	359.90	7,207.33	8,115.34	-3,384.88	14,536,008.23	1,733,165.42	40.02499660	-104.66869418
18,100.04	89.83	359.90	7,207.63	8,215.34	-3,385.05	14,536,108.23	1,733,165.25	40.02527122	-104.66869346
18,200.04	89.83	359.90	7,207.93	8,315.34	-3,385.22	14,536,208.23	1,733,165.08	40.02554583	-104.66869274
18,300.04	89.83	359.90	7,208.23	8,415.34	-3,385.40	14,536,308.23	1,733,164.91	40.02582045	-104.66869203
18,400.04	89.83	359.90	7,208.53	8,515.34	-3,385.57	14,536,408.23	1,733,164.74	40.02609506	-104.66869131
18,500.04	89.83	359.90	7,208.83	8,615.34	-3,385.74	14,536,508.23	1,733,164.57	40.02636967	-104.66869059
18,600.04	89.83	359.90	7,209.13	8,715.34	-3,385.91	14,536,608.23	1,733,164.40	40.02664429	-104.66868987
18,700.04	89.83	359.90	7,209.43	8,815.34	-3,386.08	14,536,708.22	1,733,164.23	40.02691890	-104.66868915
18,800.04	89.83	359.90	7,209.73	8,915.34	-3,386.25	14,536,808.22	1,733,164.06	40.02719351	-104.66868843
18,900.04	89.83	359.90	7,210.03	9,015.34	-3,386.42	14,536,908.22	1,733,163.89	40.02746813	-104.66868771
19,000.04	89.83	359.90	7,210.33	9,115.34	-3,386.59	14,537,008.22	1,733,163.72	40.02774274	-104.66868699
19,100.04	89.83	359.90	7,210.63	9,215.34	-3,386.76	14,537,108.22	1,733,163.55	40.02801735	-104.66868627
19,200.04	89.83	359.90	7,210.93	9,315.34	-3,386.93	14,537,208.22	1,733,163.37	40.02829197	-104.66868555
19,219.90	89.83	359.90	7,210.99	9,335.20	-3,386.96	14,537,228.08	1,733,163.34	40.02834651	-104.66868541
<b>PBHL/TD 19219.90 MD 7211.00 TVD</b>									
19,235.69	89.83	359.90	7,211.04	9,350.99	-3,386.99	14,537,243.87	1,733,163.31	40.02838987	-104.66868530

<b>Database:</b>	DB_Aug0116_LT_v14	<b>Local Co-ordinate Reference:</b>	Well Buford 33-05-1L
<b>Company:</b>	Confluence Resources	<b>TVD Reference:</b>	RKB=5136+25 @ 5161.00ft
<b>Project:</b>	Weld County, Colorado	<b>MD Reference:</b>	RKB=5136+25 @ 5161.00ft
<b>Site:</b>	Section 34-T01N-R65W	<b>North Reference:</b>	Grid
<b>Well:</b>	Buford 33-05-1L	<b>Survey Calculation Method:</b>	Minimum Curvature
<b>Wellbore:</b>	Original Hole		
<b>Design:</b>	plan1		

Design Targets									
Target Name	Dip Angle	Dip Dir.	TVD	+N/-S	+E/-W	Northing	Easting	Latitude	Longitude
- hit/miss target	(°)	(°)	(ft)	(ft)	(ft)	(usft)	(usft)		
- Shape									
LP Buford 33-05-1L 470	0.00	359.79	7,182.00	-322.60	-3,370.49	14,527,570.30	1,733,179.82	40.00182473	-104.66875480
- plan hits target center									
- Point									
BHL Buford 33-05-1L 47	0.00	359.79	7,211.00	9,337.52	-3,424.18	14,537,230.40	1,733,126.13	40.02835327	-104.66881831
- plan misses target center by 37.28ft at 19219.90ft MD (7210.99 TVD, 9335.20 N, -3386.96 E)									
- Point									

Plan Annotations				
Measured Depth	Vertical Depth	Local Coordinates		Comment
(ft)	(ft)	+N/-S (ft)	+E/-W (ft)	
5,000.00	5,000.00	0.00	0.00	KOP Begin 10°/100' build
5,626.01	5,508.68	-94.11	-294.63	Begin 62.60° tangent section
8,506.78	6,833.18	-872.52	-2,731.56	Begin 10°/100' build/turn
9,559.59	7,181.99	-325.05	-3,370.48	LP Begin 89.83° lateral section
19,219.90	7,210.99	9,335.20	-3,386.96	PBHL/TD 19219.90 MD 7211.00 TVD