



Weld County, Colorado  
Section 34-T01N-R65W  
Buford 33-04-4L  
plan1

Azimuth Corrections:

To convert a Magnetic Direction to a True Direction, Add 8.28° East

Buford 33-04-4L Surf loc: 770 FSL 819 FWL Section 34-T01N-R65W			
NAD83 Colorado - HARN Universal Transverse Mercator (US Survey Feet) Zone 13N (108 W to 102 W) RKB=5137+25 @ 5162.00ft			
Northing	Easting	Latitude	Longitude
14527893.00	1736575.30	40.00267562	-104.65662574

Section Details

Sec	MD	Inc	Azi	TVD	+N/-S	+E/-W	Dleg	Vsect	Annotation
1	0.00	0.00	0.00	0.00	0.00	0.00	0.00	0.00	
2	5000.00	0.00	0.00	5000.00	0.00	0.00	0.00	0.00	KOP Begin 10°/100' build
3	5501.20	50.12	245.90	5439.68	-83.95	-187.66	10.00	-32.76	Begin 50.08° tangent section
4	7974.32	50.12	245.90	7025.41	-858.93	-1920.06	0.00	-335.19	Begin 10°/100' build/turn
5	9056.06	89.98	359.90	7533.00	-315.70	-2475.58	10.00	332.84	
6	18716.33	89.98	359.90	7537.00	9344.55	-2491.93	0.00	9671.11	

DESIGN TARGET DETAILS

Name	TVD	+N/-S	+E/-W	Northing	Easting	Latitude	Longitude
LP Buford 33-04-4L 470 FSL 1660 FEL	7533.00	-315.70	-2475.58	14527577.30	1734099.72	40.00183451	-104.66546992
BHL Buford 33-04-4L 470 FNL 1660 FEL	7537.00	9344.42	-2529.15	14537237.40	1734046.16	40.02836305	-104.66553169

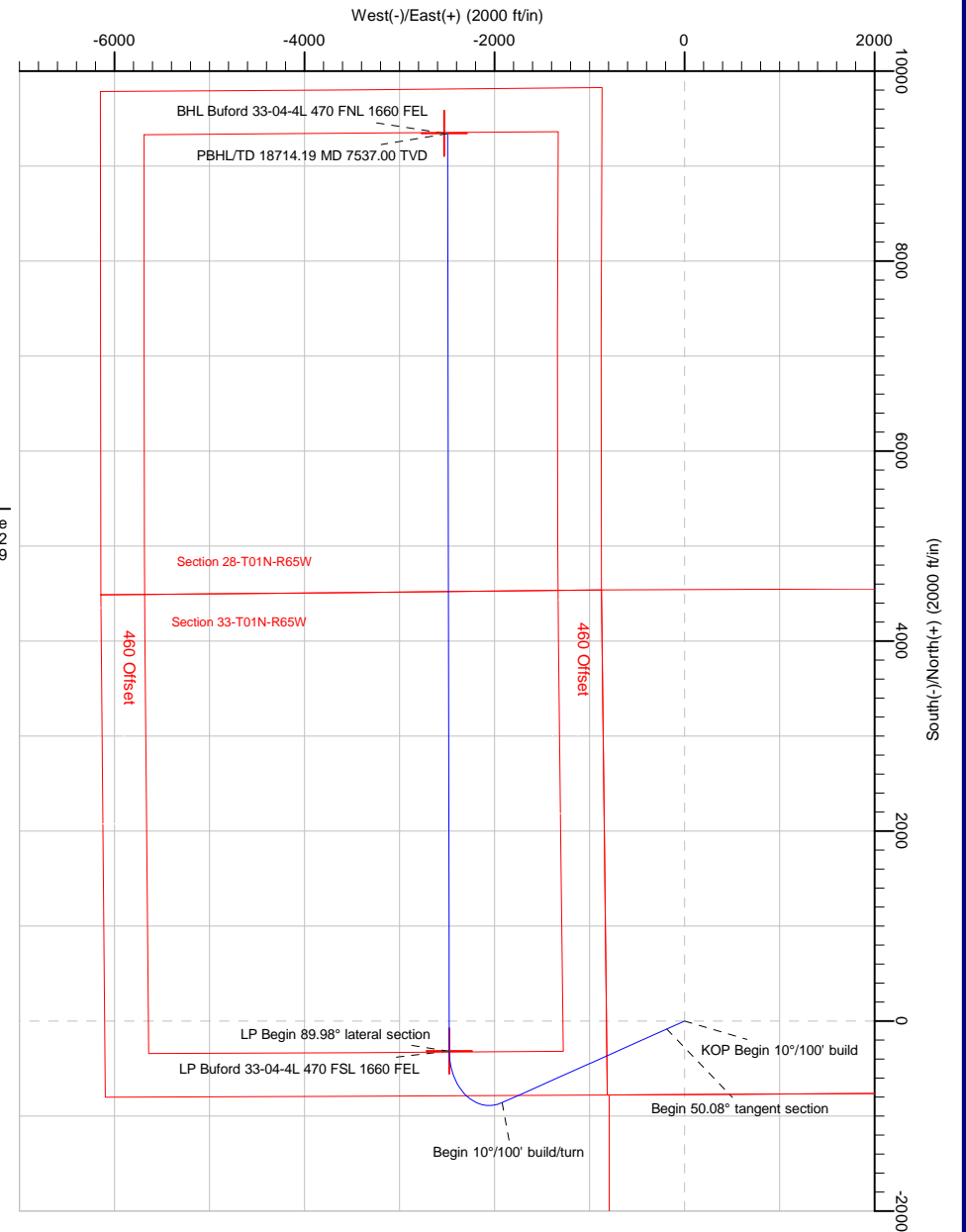
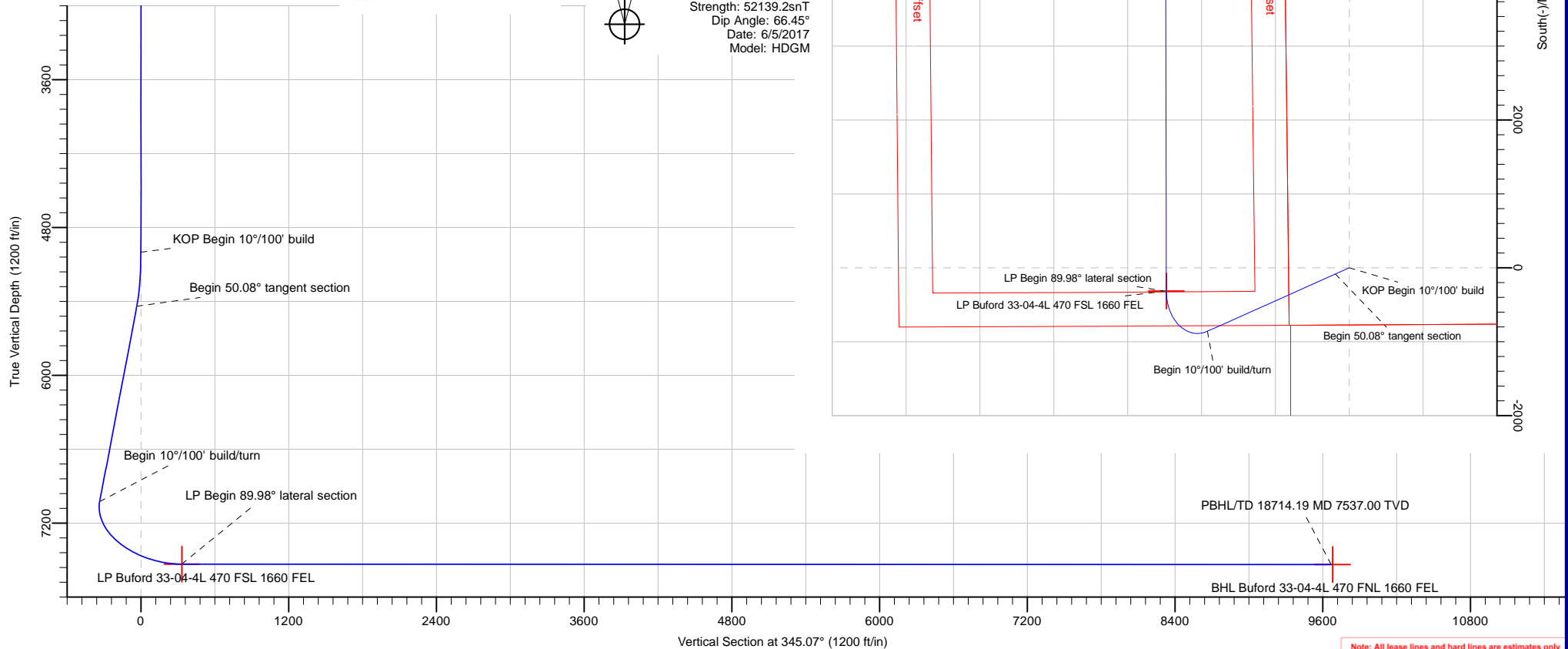


PRODIRECTIONAL



Azimuths to Grid North  
True North: -0.22°  
Magnetic North: 8.06°

Magnetic Field  
Strength: 52139.2snT  
Dip Angle: 66.45°  
Date: 6/5/2017  
Model: HDGM



Note: All lease lines and hard lines are estimates only and are subject to customers approval.

<b>Database:</b>	DB_Aug0116_LT_v14	<b>Local Co-ordinate Reference:</b>	Well Buford 33-04-4L
<b>Company:</b>	Confluence Resources	<b>TVD Reference:</b>	RKB=5137+25 @ 5162.00ft
<b>Project:</b>	Weld County, Colorado	<b>MD Reference:</b>	RKB=5137+25 @ 5162.00ft
<b>Site:</b>	Section 34-T01N-R65W	<b>North Reference:</b>	Grid
<b>Well:</b>	Buford 33-04-4L	<b>Survey Calculation Method:</b>	Minimum Curvature
<b>Wellbore:</b>	Original Hole		
<b>Design:</b>	plan1		

<b>Project</b>	Weld County, Colorado		
<b>Map System:</b>	Universal Transverse Mercator (US Survey Feet)	<b>System Datum:</b>	Mean Sea Level
<b>Geo Datum:</b>	NAD83 Colorado - HARN		
<b>Map Zone:</b>	Zone 13N (108 W to 102 W)		

Site		Section 34-T01N-R65W			
Site Position:		Northing:	14,527,892.80 usft	Latitude:	40.00267560
From:	Map	Easting:	1,736,525.30 usft	Longitude:	-104.65680429
Position Uncertainty:	0.00 ft	Slot Radius:	13-3/16 "	Grid Convergence:	0.22 °

Well	Buford 33-04-4L, Surf loc: 770 FSL 819 FWL Section 34-T01N-R65W					
Well Position	+N/-S	0.20 ft	Northing:	14,527,893.00 usft	Latitude:	40.00267562
	+E/-W	50.00 ft	Easting:	1,736,575.30 usft	Longitude:	-104.65662574
Position Uncertainty		0.00 ft	Wellhead Elevation:		Ground Level:	5,137.00 ft

<b>Wellbore</b>	Original Hole				
<b>Magnetics</b>	<b>Model Name</b>	<b>Sample Date</b>	<b>Declination (°)</b>	<b>Dip Angle (°)</b>	<b>Field Strength (nT)</b>
	HDGM	6/5/2017	8.28	66.45	52,139.20000000

<b>Design</b>	plan1			
<b>Audit Notes:</b>				
<b>Version:</b>	<b>Phase:</b>	PLAN	<b>Tie On Depth:</b>	0.00
<b>Vertical Section:</b>	<b>Depth From (TVD) (ft)</b>	<b>+N/-S (ft)</b>	<b>+E/-W (ft)</b>	<b>Direction (°)</b>
	0.00	0.00	0.00	345.07

<b>Plan Survey Tool Program</b>	<b>Date</b>			
<b>Depth From (ft)</b>	<b>Depth To (ft)</b>	<b>Survey (Wellbore)</b>	<b>Tool Name</b>	<b>Remarks</b>
1	0.00	18,714.20	plan1 (Original Hole)	

<b>Plan Sections</b>										
<b>Measured Depth (ft)</b>	<b>Inclination (°)</b>	<b>Azimuth (°)</b>	<b>Vertical Depth (ft)</b>	<b>+N/-S (ft)</b>	<b>+E/-W (ft)</b>	<b>Dogleg Rate (°/100ft)</b>	<b>Build Rate (°/100ft)</b>	<b>Turn Rate (°/100ft)</b>	<b>TFO (°)</b>	<b>Target</b>
0.00	0.00	0.00	0.00	0.00	0.00	0.00	0.00	0.00	0.00	
5,000.00	0.00	0.00	5,000.00	0.00	0.00	0.00	0.00	0.00	0.00	
5,501.20	50.12	245.90	5,439.68	-83.95	-187.66	10.00	10.00	0.00	245.90	
7,974.32	50.12	245.90	7,025.41	-858.93	-1,920.06	0.00	0.00	0.00	0.00	
9,056.06	89.98	359.90	7,533.00	-315.70	-2,475.59	10.00	3.68	10.54	105.95	LP Buford 33-04-4L 4'
18,716.33	89.98	359.90	7,537.00	9,344.55	-2,491.93	0.00	0.00	0.00	0.00	BHL Buford 33-04-4L

<b>Database:</b>	DB_Aug0116_LT_v14	<b>Local Co-ordinate Reference:</b>	Well Buford 33-04-4L
<b>Company:</b>	Confluence Resources	<b>TVD Reference:</b>	RKB=5137+25 @ 5162.00ft
<b>Project:</b>	Weld County, Colorado	<b>MD Reference:</b>	RKB=5137+25 @ 5162.00ft
<b>Site:</b>	Section 34-T01N-R65W	<b>North Reference:</b>	Grid
<b>Well:</b>	Buford 33-04-4L	<b>Survey Calculation Method:</b>	Minimum Curvature
<b>Wellbore:</b>	Original Hole		
<b>Design:</b>	plan1		

Planned Survey									
Measured Depth (ft)	Inclination (°)	Azimuth (°)	Vertical Depth (ft)	+N/-S (ft)	+E/-W (ft)	Vertical Section (ft)	Dogleg Rate (°/100ft)	Build Rate (°/100ft)	Turn Rate (°/100ft)
0.00	0.00	0.00	0.00	0.00	0.00	0.00	0.00	0.00	0.00
100.00	0.00	0.00	100.00	0.00	0.00	0.00	0.00	0.00	0.00
200.00	0.00	0.00	200.00	0.00	0.00	0.00	0.00	0.00	0.00
300.00	0.00	0.00	300.00	0.00	0.00	0.00	0.00	0.00	0.00
400.00	0.00	0.00	400.00	0.00	0.00	0.00	0.00	0.00	0.00
500.00	0.00	0.00	500.00	0.00	0.00	0.00	0.00	0.00	0.00
600.00	0.00	0.00	600.00	0.00	0.00	0.00	0.00	0.00	0.00
700.00	0.00	0.00	700.00	0.00	0.00	0.00	0.00	0.00	0.00
800.00	0.00	0.00	800.00	0.00	0.00	0.00	0.00	0.00	0.00
900.00	0.00	0.00	900.00	0.00	0.00	0.00	0.00	0.00	0.00
1,000.00	0.00	0.00	1,000.00	0.00	0.00	0.00	0.00	0.00	0.00
1,100.00	0.00	0.00	1,100.00	0.00	0.00	0.00	0.00	0.00	0.00
1,200.00	0.00	0.00	1,200.00	0.00	0.00	0.00	0.00	0.00	0.00
1,300.00	0.00	0.00	1,300.00	0.00	0.00	0.00	0.00	0.00	0.00
1,400.00	0.00	0.00	1,400.00	0.00	0.00	0.00	0.00	0.00	0.00
1,500.00	0.00	0.00	1,500.00	0.00	0.00	0.00	0.00	0.00	0.00
1,600.00	0.00	0.00	1,600.00	0.00	0.00	0.00	0.00	0.00	0.00
1,700.00	0.00	0.00	1,700.00	0.00	0.00	0.00	0.00	0.00	0.00
1,800.00	0.00	0.00	1,800.00	0.00	0.00	0.00	0.00	0.00	0.00
1,900.00	0.00	0.00	1,900.00	0.00	0.00	0.00	0.00	0.00	0.00
2,000.00	0.00	0.00	2,000.00	0.00	0.00	0.00	0.00	0.00	0.00
2,100.00	0.00	0.00	2,100.00	0.00	0.00	0.00	0.00	0.00	0.00
2,200.00	0.00	0.00	2,200.00	0.00	0.00	0.00	0.00	0.00	0.00
2,300.00	0.00	0.00	2,300.00	0.00	0.00	0.00	0.00	0.00	0.00
2,400.00	0.00	0.00	2,400.00	0.00	0.00	0.00	0.00	0.00	0.00
2,500.01	0.00	0.00	2,500.01	0.00	0.00	0.00	0.00	0.00	0.00
2,600.01	0.00	0.00	2,600.01	0.00	0.00	0.00	0.00	0.00	0.00
2,700.01	0.00	0.00	2,700.01	0.00	0.00	0.00	0.00	0.00	0.00
2,800.01	0.00	0.00	2,800.01	0.00	0.00	0.00	0.00	0.00	0.00
2,900.01	0.00	0.00	2,900.01	0.00	0.00	0.00	0.00	0.00	0.00
3,000.01	0.00	0.00	3,000.01	0.00	0.00	0.00	0.00	0.00	0.00
3,100.01	0.00	0.00	3,100.01	0.00	0.00	0.00	0.00	0.00	0.00
3,200.01	0.00	0.00	3,200.01	0.00	0.00	0.00	0.00	0.00	0.00
3,300.01	0.00	0.00	3,300.01	0.00	0.00	0.00	0.00	0.00	0.00
3,400.01	0.00	0.00	3,400.01	0.00	0.00	0.00	0.00	0.00	0.00
3,500.01	0.00	0.00	3,500.01	0.00	0.00	0.00	0.00	0.00	0.00
3,600.01	0.00	0.00	3,600.01	0.00	0.00	0.00	0.00	0.00	0.00
3,700.01	0.00	0.00	3,700.01	0.00	0.00	0.00	0.00	0.00	0.00
3,800.01	0.00	0.00	3,800.01	0.00	0.00	0.00	0.00	0.00	0.00
3,900.01	0.00	0.00	3,900.01	0.00	0.00	0.00	0.00	0.00	0.00
4,000.01	0.00	0.00	4,000.01	0.00	0.00	0.00	0.00	0.00	0.00
4,100.01	0.00	0.00	4,100.01	0.00	0.00	0.00	0.00	0.00	0.00
4,200.01	0.00	0.00	4,200.01	0.00	0.00	0.00	0.00	0.00	0.00
4,300.01	0.00	0.00	4,300.01	0.00	0.00	0.00	0.00	0.00	0.00
4,400.01	0.00	0.00	4,400.01	0.00	0.00	0.00	0.00	0.00	0.00
4,500.01	0.00	0.00	4,500.01	0.00	0.00	0.00	0.00	0.00	0.00
4,600.01	0.00	0.00	4,600.01	0.00	0.00	0.00	0.00	0.00	0.00
4,700.01	0.00	0.00	4,700.01	0.00	0.00	0.00	0.00	0.00	0.00
4,800.01	0.00	0.00	4,800.01	0.00	0.00	0.00	0.00	0.00	0.00
4,900.01	0.00	0.00	4,900.01	0.00	0.00	0.00	0.00	0.00	0.00
5,000.00	0.00	0.00	5,000.00	0.00	0.00	0.00	0.00	0.00	0.00
KOP Begin 10°/100' build									
5,000.01	0.00	245.90	5,000.01	0.00	0.00	0.00	0.00	0.00	0.00
5,100.01	10.00	245.90	5,099.50	-3.56	-7.95	-1.39	10.00	10.00	0.00

<b>Database:</b>	DB_Aug0116_LT_v14	<b>Local Co-ordinate Reference:</b>	Well Buford 33-04-4L
<b>Company:</b>	Confluence Resources	<b>TVD Reference:</b>	RKB=5137+25 @ 5162.00ft
<b>Project:</b>	Weld County, Colorado	<b>MD Reference:</b>	RKB=5137+25 @ 5162.00ft
<b>Site:</b>	Section 34-T01N-R65W	<b>North Reference:</b>	Grid
<b>Well:</b>	Buford 33-04-4L	<b>Survey Calculation Method:</b>	Minimum Curvature
<b>Wellbore:</b>	Original Hole		
<b>Design:</b>	plan1		

Planned Survey									
Measured Depth (ft)	Inclination (°)	Azimuth (°)	Vertical Depth (ft)	+N/-S (ft)	+E/-W (ft)	Vertical Section (ft)	Dogleg Rate (°/100ft)	Build Rate (°/100ft)	Turn Rate (°/100ft)
5,200.01	20.00	245.90	5,195.97	-14.11	-31.54	-5.51	10.00	10.00	0.00
5,300.01	30.00	245.90	5,286.49	-31.35	-70.08	-12.23	10.00	10.00	0.00
5,400.01	40.00	245.90	5,368.30	-54.74	-122.37	-21.36	10.00	10.00	0.00
5,500.01	50.00	245.90	5,438.92	-83.58	-186.83	-32.62	10.00	10.00	0.00
5,500.75	50.08	245.90	5,439.40	-83.81	-187.35	-32.71	10.00	10.00	0.00
<b>Begin 50.08° tangent section</b>									
5,501.20	50.12	245.90	5,439.68	-83.95	-187.66	-32.76	10.00	10.00	0.00
5,600.01	50.12	245.90	5,503.04	-114.91	-256.88	-44.84	0.00	0.00	0.00
5,700.01	50.12	245.90	5,567.16	-146.25	-326.93	-57.07	0.00	0.00	0.00
5,800.01	50.12	245.90	5,631.28	-177.59	-396.98	-69.30	0.00	0.00	0.00
5,900.01	50.12	245.90	5,695.39	-208.92	-467.03	-81.53	0.00	0.00	0.00
6,000.01	50.12	245.90	5,759.51	-240.26	-537.08	-93.76	0.00	0.00	0.00
6,100.01	50.12	245.90	5,823.63	-271.59	-607.13	-105.99	0.00	0.00	0.00
6,200.01	50.12	245.90	5,887.75	-302.93	-677.18	-118.22	0.00	0.00	0.00
6,300.01	50.12	245.90	5,951.87	-334.27	-747.23	-130.44	0.00	0.00	0.00
6,400.01	50.12	245.90	6,015.99	-365.60	-817.28	-142.67	0.00	0.00	0.00
6,500.01	50.12	245.90	6,080.11	-396.94	-887.33	-154.90	0.00	0.00	0.00
6,600.01	50.12	245.90	6,144.22	-428.27	-957.37	-167.13	0.00	0.00	0.00
6,700.01	50.12	245.90	6,208.34	-459.61	-1,027.42	-179.36	0.00	0.00	0.00
6,800.01	50.12	245.90	6,272.46	-490.95	-1,097.47	-191.59	0.00	0.00	0.00
6,900.01	50.12	245.90	6,336.58	-522.28	-1,167.52	-203.81	0.00	0.00	0.00
7,000.01	50.12	245.90	6,400.70	-553.62	-1,237.57	-216.04	0.00	0.00	0.00
7,100.01	50.12	245.90	6,464.82	-584.95	-1,307.62	-228.27	0.00	0.00	0.00
7,200.01	50.12	245.90	6,528.94	-616.29	-1,377.67	-240.50	0.00	0.00	0.00
7,300.01	50.12	245.90	6,593.05	-647.63	-1,447.72	-252.73	0.00	0.00	0.00
7,400.01	50.12	245.90	6,657.17	-678.96	-1,517.77	-264.96	0.00	0.00	0.00
7,500.02	50.12	245.90	6,721.29	-710.30	-1,587.82	-277.19	0.00	0.00	0.00
7,600.02	50.12	245.90	6,785.41	-741.63	-1,657.87	-289.41	0.00	0.00	0.00
7,700.02	50.12	245.90	6,849.53	-772.97	-1,727.92	-301.64	0.00	0.00	0.00
7,800.02	50.12	245.90	6,913.65	-804.31	-1,797.97	-313.87	0.00	0.00	0.00
7,900.02	50.12	245.90	6,977.77	-835.64	-1,868.01	-326.10	0.00	0.00	0.00
7,974.15	50.12	245.90	7,025.30	-858.87	-1,919.94	-335.17	0.00	0.00	0.00
<b>Begin 10°/100' build/turn</b>									
7,974.32	50.12	245.90	7,025.41	-858.93	-1,920.06	-335.19	0.00	0.00	0.00
8,000.02	49.46	249.15	7,042.00	-866.43	-1,938.19	-337.76	9.99	-2.57	12.65
8,100.02	47.80	262.30	7,108.26	-884.96	-2,010.59	-337.01	10.00	-1.66	13.15
8,200.02	47.70	275.83	7,175.66	-886.16	-2,084.27	-319.19	10.00	-0.10	13.52
8,300.02	49.16	289.06	7,242.18	-870.01	-2,157.00	-284.84	10.00	1.47	13.24
8,400.02	52.06	301.46	7,305.78	-836.99	-2,226.57	-235.01	10.00	2.89	12.40
8,500.02	56.14	312.75	7,364.54	-788.10	-2,290.85	-171.21	10.00	4.08	11.28
8,600.02	61.14	322.89	7,416.66	-724.83	-2,347.90	-95.38	10.00	5.01	10.15
8,700.02	66.84	332.05	7,460.56	-649.10	-2,395.99	-9.82	10.00	5.69	9.16
8,800.02	73.02	340.43	7,494.92	-563.22	-2,433.65	82.87	10.00	6.18	8.38
8,900.02	79.51	348.26	7,518.68	-469.79	-2,459.74	179.87	10.00	6.50	7.83
9,000.02	86.20	355.76	7,531.13	-371.65	-2,473.47	278.23	10.00	6.68	7.50
9,053.93	89.83	359.75	7,533.00	-317.83	-2,475.58	330.77	10.00	6.75	7.39
<b>LP Begin 89.98° lateral section</b>									
9,056.06	89.98	359.90	7,533.00	-315.70	-2,475.59	332.84	10.00	6.75	7.38
9,100.02	89.98	359.90	7,533.02	-271.74	-2,475.66	375.33	0.00	0.00	0.00
9,200.02	89.98	359.90	7,533.06	-171.74	-2,475.83	472.00	0.00	0.00	0.00
9,300.02	89.98	359.90	7,533.10	-71.74	-2,476.00	568.66	0.00	0.00	0.00
9,400.02	89.98	359.90	7,533.14	28.26	-2,476.17	665.33	0.00	0.00	0.00
9,500.02	89.98	359.90	7,533.18	128.26	-2,476.34	762.00	0.00	0.00	0.00

<b>Database:</b>	DB_Aug0116_LT_v14	<b>Local Co-ordinate Reference:</b>	Well Buford 33-04-4L
<b>Company:</b>	Confluence Resources	<b>TVD Reference:</b>	RKB=5137+25 @ 5162.00ft
<b>Project:</b>	Weld County, Colorado	<b>MD Reference:</b>	RKB=5137+25 @ 5162.00ft
<b>Site:</b>	Section 34-T01N-R65W	<b>North Reference:</b>	Grid
<b>Well:</b>	Buford 33-04-4L	<b>Survey Calculation Method:</b>	Minimum Curvature
<b>Wellbore:</b>	Original Hole		
<b>Design:</b>	plan1		

Planned Survey									
Measured Depth (ft)	Inclination (°)	Azimuth (°)	Vertical Depth (ft)	+N/-S (ft)	+E/-W (ft)	Vertical Section (ft)	Dogleg Rate (°/100ft)	Build Rate (°/100ft)	Turn Rate (°/100ft)
9,600.02	89.98	359.90	7,533.23	228.26	-2,476.51	858.66	0.00	0.00	0.00
9,700.02	89.98	359.90	7,533.27	328.26	-2,476.67	955.33	0.00	0.00	0.00
9,800.02	89.98	359.90	7,533.31	428.26	-2,476.84	1,052.00	0.00	0.00	0.00
9,900.02	89.98	359.90	7,533.35	528.26	-2,477.01	1,148.66	0.00	0.00	0.00
10,000.02	89.98	359.90	7,533.39	628.26	-2,477.18	1,245.33	0.00	0.00	0.00
10,100.02	89.98	359.90	7,533.43	728.26	-2,477.35	1,342.00	0.00	0.00	0.00
10,200.02	89.98	359.90	7,533.47	828.26	-2,477.52	1,438.67	0.00	0.00	0.00
10,300.02	89.98	359.90	7,533.52	928.26	-2,477.69	1,535.33	0.00	0.00	0.00
10,400.02	89.98	359.90	7,533.56	1,028.26	-2,477.86	1,632.00	0.00	0.00	0.00
10,500.02	89.98	359.90	7,533.60	1,128.26	-2,478.03	1,728.67	0.00	0.00	0.00
10,600.02	89.98	359.90	7,533.64	1,228.26	-2,478.20	1,825.33	0.00	0.00	0.00
10,700.02	89.98	359.90	7,533.68	1,328.26	-2,478.37	1,922.00	0.00	0.00	0.00
10,800.02	89.98	359.90	7,533.72	1,428.26	-2,478.54	2,018.67	0.00	0.00	0.00
10,900.02	89.98	359.90	7,533.76	1,528.26	-2,478.70	2,115.33	0.00	0.00	0.00
11,000.02	89.98	359.90	7,533.81	1,628.26	-2,478.87	2,212.00	0.00	0.00	0.00
11,100.02	89.98	359.90	7,533.85	1,728.26	-2,479.04	2,308.67	0.00	0.00	0.00
11,200.02	89.98	359.90	7,533.89	1,828.26	-2,479.21	2,405.34	0.00	0.00	0.00
11,300.02	89.98	359.90	7,533.93	1,928.26	-2,479.38	2,502.00	0.00	0.00	0.00
11,400.02	89.98	359.90	7,533.97	2,028.26	-2,479.55	2,598.67	0.00	0.00	0.00
11,500.02	89.98	359.90	7,534.01	2,128.26	-2,479.72	2,695.34	0.00	0.00	0.00
11,600.02	89.98	359.90	7,534.05	2,228.26	-2,479.89	2,792.00	0.00	0.00	0.00
11,700.02	89.98	359.90	7,534.09	2,328.26	-2,480.06	2,888.67	0.00	0.00	0.00
11,800.02	89.98	359.90	7,534.14	2,428.26	-2,480.23	2,985.34	0.00	0.00	0.00
11,900.02	89.98	359.90	7,534.18	2,528.26	-2,480.40	3,082.01	0.00	0.00	0.00
12,000.02	89.98	359.90	7,534.22	2,628.26	-2,480.57	3,178.67	0.00	0.00	0.00
12,100.02	89.98	359.90	7,534.26	2,728.26	-2,480.73	3,275.34	0.00	0.00	0.00
12,200.02	89.98	359.90	7,534.30	2,828.26	-2,480.90	3,372.01	0.00	0.00	0.00
12,300.02	89.98	359.90	7,534.34	2,928.26	-2,481.07	3,468.67	0.00	0.00	0.00
12,400.03	89.98	359.90	7,534.38	3,028.26	-2,481.24	3,565.34	0.00	0.00	0.00
12,500.03	89.98	359.90	7,534.43	3,128.26	-2,481.41	3,662.01	0.00	0.00	0.00
12,600.03	89.98	359.90	7,534.47	3,228.26	-2,481.58	3,758.67	0.00	0.00	0.00
12,700.03	89.98	359.90	7,534.51	3,328.26	-2,481.75	3,855.34	0.00	0.00	0.00
12,800.03	89.98	359.90	7,534.55	3,428.26	-2,481.92	3,952.01	0.00	0.00	0.00
12,900.03	89.98	359.90	7,534.59	3,528.26	-2,482.09	4,048.68	0.00	0.00	0.00
13,000.03	89.98	359.90	7,534.63	3,628.26	-2,482.26	4,145.34	0.00	0.00	0.00
13,100.03	89.98	359.90	7,534.67	3,728.26	-2,482.43	4,242.01	0.00	0.00	0.00
13,200.03	89.98	359.90	7,534.72	3,828.26	-2,482.60	4,338.68	0.00	0.00	0.00
13,300.03	89.98	359.90	7,534.76	3,928.26	-2,482.76	4,435.34	0.00	0.00	0.00
13,400.03	89.98	359.90	7,534.80	4,028.26	-2,482.93	4,532.01	0.00	0.00	0.00
13,500.03	89.98	359.90	7,534.84	4,128.26	-2,483.10	4,628.68	0.00	0.00	0.00
13,600.03	89.98	359.90	7,534.88	4,228.26	-2,483.27	4,725.34	0.00	0.00	0.00
13,700.03	89.98	359.90	7,534.92	4,328.26	-2,483.44	4,822.01	0.00	0.00	0.00
13,800.03	89.98	359.90	7,534.96	4,428.26	-2,483.61	4,918.68	0.00	0.00	0.00
13,900.03	89.98	359.90	7,535.01	4,528.26	-2,483.78	5,015.35	0.00	0.00	0.00
14,000.03	89.98	359.90	7,535.05	4,628.26	-2,483.95	5,112.01	0.00	0.00	0.00
14,100.03	89.98	359.90	7,535.09	4,728.26	-2,484.12	5,208.68	0.00	0.00	0.00
14,200.03	89.98	359.90	7,535.13	4,828.26	-2,484.29	5,305.35	0.00	0.00	0.00
14,300.03	89.98	359.90	7,535.17	4,928.26	-2,484.46	5,402.01	0.00	0.00	0.00
14,400.03	89.98	359.90	7,535.21	5,028.26	-2,484.63	5,498.68	0.00	0.00	0.00
14,500.03	89.98	359.90	7,535.25	5,128.26	-2,484.79	5,595.35	0.00	0.00	0.00
14,600.03	89.98	359.90	7,535.30	5,228.26	-2,484.96	5,692.01	0.00	0.00	0.00
14,700.03	89.98	359.90	7,535.34	5,328.26	-2,485.13	5,788.68	0.00	0.00	0.00
14,800.03	89.98	359.90	7,535.38	5,428.26	-2,485.30	5,885.35	0.00	0.00	0.00
14,900.03	89.98	359.90	7,535.42	5,528.26	-2,485.47	5,982.02	0.00	0.00	0.00

<b>Database:</b>	DB_Aug0116_LT_v14	<b>Local Co-ordinate Reference:</b>	Well Buford 33-04-4L
<b>Company:</b>	Confluence Resources	<b>TVD Reference:</b>	RKB=5137+25 @ 5162.00ft
<b>Project:</b>	Weld County, Colorado	<b>MD Reference:</b>	RKB=5137+25 @ 5162.00ft
<b>Site:</b>	Section 34-T01N-R65W	<b>North Reference:</b>	Grid
<b>Well:</b>	Buford 33-04-4L	<b>Survey Calculation Method:</b>	Minimum Curvature
<b>Wellbore:</b>	Original Hole		
<b>Design:</b>	plan1		

Planned Survey									
Measured Depth (ft)	Inclination (°)	Azimuth (°)	Vertical Depth (ft)	+N/-S (ft)	+E/-W (ft)	Vertical Section (ft)	Dogleg Rate (°/100ft)	Build Rate (°/100ft)	Turn Rate (°/100ft)
15,000.03	89.98	359.90	7,535.46	5,628.26	-2,485.64	6,078.68	0.00	0.00	0.00
15,100.03	89.98	359.90	7,535.50	5,728.26	-2,485.81	6,175.35	0.00	0.00	0.00
15,200.03	89.98	359.90	7,535.54	5,828.26	-2,485.98	6,272.02	0.00	0.00	0.00
15,300.03	89.98	359.90	7,535.59	5,928.26	-2,486.15	6,368.68	0.00	0.00	0.00
15,400.03	89.98	359.90	7,535.63	6,028.26	-2,486.32	6,465.35	0.00	0.00	0.00
15,500.03	89.98	359.90	7,535.67	6,128.26	-2,486.49	6,562.02	0.00	0.00	0.00
15,600.03	89.98	359.90	7,535.71	6,228.26	-2,486.66	6,658.68	0.00	0.00	0.00
15,700.03	89.98	359.90	7,535.75	6,328.26	-2,486.82	6,755.35	0.00	0.00	0.00
15,800.03	89.98	359.90	7,535.79	6,428.26	-2,486.99	6,852.02	0.00	0.00	0.00
15,900.03	89.98	359.90	7,535.83	6,528.26	-2,487.16	6,948.69	0.00	0.00	0.00
16,000.03	89.98	359.90	7,535.88	6,628.26	-2,487.33	7,045.35	0.00	0.00	0.00
16,100.03	89.98	359.90	7,535.92	6,728.26	-2,487.50	7,142.02	0.00	0.00	0.00
16,200.03	89.98	359.90	7,535.96	6,828.26	-2,487.67	7,238.69	0.00	0.00	0.00
16,300.03	89.98	359.90	7,536.00	6,928.26	-2,487.84	7,335.35	0.00	0.00	0.00
16,400.03	89.98	359.90	7,536.04	7,028.26	-2,488.01	7,432.02	0.00	0.00	0.00
16,500.03	89.98	359.90	7,536.08	7,128.26	-2,488.18	7,528.69	0.00	0.00	0.00
16,600.03	89.98	359.90	7,536.12	7,228.26	-2,488.35	7,625.35	0.00	0.00	0.00
16,700.03	89.98	359.90	7,536.17	7,328.26	-2,488.52	7,722.02	0.00	0.00	0.00
16,800.03	89.98	359.90	7,536.21	7,428.26	-2,488.69	7,818.69	0.00	0.00	0.00
16,900.03	89.98	359.90	7,536.25	7,528.26	-2,488.85	7,915.36	0.00	0.00	0.00
17,000.03	89.98	359.90	7,536.29	7,628.26	-2,489.02	8,012.02	0.00	0.00	0.00
17,100.03	89.98	359.90	7,536.33	7,728.26	-2,489.19	8,108.69	0.00	0.00	0.00
17,200.03	89.98	359.90	7,536.37	7,828.26	-2,489.36	8,205.36	0.00	0.00	0.00
17,300.03	89.98	359.90	7,536.41	7,928.26	-2,489.53	8,302.02	0.00	0.00	0.00
17,400.04	89.98	359.90	7,536.46	8,028.26	-2,489.70	8,398.69	0.00	0.00	0.00
17,500.04	89.98	359.90	7,536.50	8,128.26	-2,489.87	8,495.36	0.00	0.00	0.00
17,600.04	89.98	359.90	7,536.54	8,228.26	-2,490.04	8,592.02	0.00	0.00	0.00
17,700.04	89.98	359.90	7,536.58	8,328.26	-2,490.21	8,688.69	0.00	0.00	0.00
17,800.04	89.98	359.90	7,536.62	8,428.26	-2,490.38	8,785.36	0.00	0.00	0.00
17,900.04	89.98	359.90	7,536.66	8,528.26	-2,490.55	8,882.03	0.00	0.00	0.00
18,000.04	89.98	359.90	7,536.70	8,628.26	-2,490.72	8,978.69	0.00	0.00	0.00
18,100.04	89.98	359.90	7,536.74	8,728.26	-2,490.88	9,075.36	0.00	0.00	0.00
18,200.04	89.98	359.90	7,536.79	8,828.26	-2,491.05	9,172.03	0.00	0.00	0.00
18,300.04	89.98	359.90	7,536.83	8,928.26	-2,491.22	9,268.69	0.00	0.00	0.00
18,400.04	89.98	359.90	7,536.87	9,028.26	-2,491.39	9,365.36	0.00	0.00	0.00
18,500.04	89.98	359.90	7,536.91	9,128.26	-2,491.56	9,462.03	0.00	0.00	0.00
18,600.04	89.98	359.90	7,536.95	9,228.26	-2,491.73	9,558.69	0.00	0.00	0.00
18,700.04	89.98	359.90	7,536.99	9,328.26	-2,491.90	9,655.36	0.00	0.00	0.00
18,714.20	89.98	359.90	7,537.00	9,342.42	-2,491.92	9,669.05	0.00	0.00	0.00
<b>PBHL/TD 18714.19 MD 7537.00 TVD</b>									
18,716.33	89.98	359.90	7,537.00	9,344.55	-2,491.93	9,671.11	0.00	0.00	0.00

<b>Database:</b>	DB_Aug0116_LT_v14	<b>Local Co-ordinate Reference:</b>	Well Buford 33-04-4L
<b>Company:</b>	Confluence Resources	<b>TVD Reference:</b>	RKB=5137+25 @ 5162.00ft
<b>Project:</b>	Weld County, Colorado	<b>MD Reference:</b>	RKB=5137+25 @ 5162.00ft
<b>Site:</b>	Section 34-T01N-R65W	<b>North Reference:</b>	Grid
<b>Well:</b>	Buford 33-04-4L	<b>Survey Calculation Method:</b>	Minimum Curvature
<b>Wellbore:</b>	Original Hole		
<b>Design:</b>	plan1		

Design Targets									
Target Name	Dip Angle	Dip Dir.	TVD	+N/-S	+E/-W	Northing	Easting	Latitude	Longitude
- hit/miss target	(°)	(°)	(ft)	(ft)	(ft)	(usft)	(usft)		
- Shape									
LP Buford 33-04-4L 470	0.00	359.78	7,533.00	-315.70	-2,475.59	14,527,577.30	1,734,099.72	40.00183452	-104.66546991
- plan hits target center									
- Point									
BHL Buford 33-04-4L 47	0.00	359.78	7,537.00	9,344.42	-2,529.15	14,537,237.40	1,734,046.16	40.02836305	-104.66553169
- plan misses target center by 37.22ft at 18716.26ft MD (7537.00 TVD, 9344.48 N, -2491.93 E)									
- Point									

Plan Annotations				
Measured Depth	Vertical Depth	Local Coordinates		Comment
(ft)	(ft)	+N/-S (ft)	+E/-W (ft)	
5,000.00	5,000.00	0.00	0.00	KOP Begin 10°/100' build
5,500.75	5,439.40	-83.81	-187.35	Begin 50.08° tangent section
7,974.15	7,025.30	-858.87	-1,919.94	Begin 10°/100' build/turn
9,053.93	7,533.00	-317.83	-2,475.58	LP Begin 89.98° lateral section
18,714.20	7,537.00	9,342.42	-2,491.92	PBHL/TD 18714.19 MD 7537.00 TVD

<b>Database:</b>	DB_Aug0116_LT_v14	<b>Local Co-ordinate Reference:</b>	Well Buford 33-04-4L
<b>Company:</b>	Confluence Resources	<b>TVD Reference:</b>	RKB=5137+25 @ 5162.00ft
<b>Project:</b>	Weld County, Colorado	<b>MD Reference:</b>	RKB=5137+25 @ 5162.00ft
<b>Site:</b>	Section 34-T01N-R65W	<b>North Reference:</b>	Grid
<b>Well:</b>	Buford 33-04-4L	<b>Survey Calculation Method:</b>	Minimum Curvature
<b>Wellbore:</b>	Original Hole		
<b>Design:</b>	plan1		

<b>Project</b>	Weld County, Colorado		
<b>Map System:</b>	Universal Transverse Mercator (US Survey Feet)	<b>System Datum:</b>	Mean Sea Level
<b>Geo Datum:</b>	NAD83 Colorado - HARN		
<b>Map Zone:</b>	Zone 13N (108 W to 102 W)		

Site		Section 34-T01N-R65W			
Site Position:		Northing:	14,527,892.80 usft	Latitude:	40.00267560
From:	Map	Easting:	1,736,525.30 usft	Longitude:	-104.65680429
Position Uncertainty:	0.00 ft	Slot Radius:	13-3/16 "	Grid Convergence:	0.22 °

Well	Buford 33-04-4L, Surf loc: 770 FSL 819 FWL Section 34-T01N-R65W					
Well Position	+N/-S	0.00 ft	Northing:	14,527,893.00 usft	Latitude:	40.00267562
	+E/-W	0.00 ft	Easting:	1,736,575.30 usft	Longitude:	-104.65662574
Position Uncertainty		0.00 ft	Wellhead Elevation:		Ground Level:	5,137.00 ft

<b>Wellbore</b>	Original Hole				
<b>Magnetics</b>	<b>Model Name</b>	<b>Sample Date</b>	<b>Declination (°)</b>	<b>Dip Angle (°)</b>	<b>Field Strength (nT)</b>
	HDGM	6/5/2017	8.28	66.45	52,139.20000000

<b>Design</b>	plan1			
<b>Audit Notes:</b>				
<b>Version:</b>	<b>Phase:</b>	PLAN	<b>Tie On Depth:</b>	0.00
<b>Vertical Section:</b>	<b>Depth From (TVD) (ft)</b>	<b>+N/-S (ft)</b>	<b>+E/-W (ft)</b>	<b>Direction (°)</b>
	0.00	0.00	0.00	345.07

<b>Plan Survey Tool Program</b>	<b>Date</b>			
<b>Depth From (ft)</b>	<b>Depth To (ft)</b>	<b>Survey (Wellbore)</b>	<b>Tool Name</b>	<b>Remarks</b>
1	0.00	18,714.20 plan1 (Original Hole)		

<b>Plan Sections</b>										
<b>Measured Depth (ft)</b>	<b>Inclination (°)</b>	<b>Azimuth (°)</b>	<b>Vertical Depth (ft)</b>	<b>+N/-S (ft)</b>	<b>+E/-W (ft)</b>	<b>Dogleg Rate (°/100ft)</b>	<b>Build Rate (°/100ft)</b>	<b>Turn Rate (°/100ft)</b>	<b>TFO (°)</b>	<b>Target</b>
0.00	0.00	0.00	0.00	0.00	0.00	0.00	0.00	0.00	0.00	
5,000.00	0.00	0.00	5,000.00	0.00	0.00	0.00	0.00	0.00	0.00	
5,501.20	50.12	245.90	5,439.68	-83.95	-187.66	10.00	10.00	0.00	245.90	
7,974.32	50.12	245.90	7,025.41	-858.93	-1,920.06	0.00	0.00	0.00	0.00	
9,056.06	89.98	359.90	7,533.00	-315.70	-2,475.59	10.00	3.68	10.54	105.95	LP Buford 33-04-4L 4'
18,716.33	89.98	359.90	7,537.00	9,344.55	-2,491.93	0.00	0.00	0.00	0.00	BHL Buford 33-04-4L



<b>Database:</b>	DB_Aug0116_LT_v14	<b>Local Co-ordinate Reference:</b>	Well Buford 33-04-4L
<b>Company:</b>	Confluence Resources	<b>TVD Reference:</b>	RKB=5137+25 @ 5162.00ft
<b>Project:</b>	Weld County, Colorado	<b>MD Reference:</b>	RKB=5137+25 @ 5162.00ft
<b>Site:</b>	Section 34-T01N-R65W	<b>North Reference:</b>	Grid
<b>Well:</b>	Buford 33-04-4L	<b>Survey Calculation Method:</b>	Minimum Curvature
<b>Wellbore:</b>	Original Hole		
<b>Design:</b>	plan1		

Planned Survey									
Measured Depth (ft)	Inclination (°)	Azimuth (°)	Vertical Depth (ft)	+N/-S (ft)	+E/-W (ft)	Map Northing (usft)	Map Easting (usft)	Latitude	Longitude
0.00	0.00	0.00	0.00	0.00	0.00	14,527,893.00	1,736,575.30	40.00267562	-104.65662574
100.00	0.00	0.00	100.00	0.00	0.00	14,527,893.00	1,736,575.30	40.00267562	-104.65662574
200.00	0.00	0.00	200.00	0.00	0.00	14,527,893.00	1,736,575.30	40.00267562	-104.65662574
300.00	0.00	0.00	300.00	0.00	0.00	14,527,893.00	1,736,575.30	40.00267562	-104.65662574
400.00	0.00	0.00	400.00	0.00	0.00	14,527,893.00	1,736,575.30	40.00267562	-104.65662574
500.00	0.00	0.00	500.00	0.00	0.00	14,527,893.00	1,736,575.30	40.00267562	-104.65662574
600.00	0.00	0.00	600.00	0.00	0.00	14,527,893.00	1,736,575.30	40.00267562	-104.65662574
700.00	0.00	0.00	700.00	0.00	0.00	14,527,893.00	1,736,575.30	40.00267562	-104.65662574
800.00	0.00	0.00	800.00	0.00	0.00	14,527,893.00	1,736,575.30	40.00267562	-104.65662574
900.00	0.00	0.00	900.00	0.00	0.00	14,527,893.00	1,736,575.30	40.00267562	-104.65662574
1,000.00	0.00	0.00	1,000.00	0.00	0.00	14,527,893.00	1,736,575.30	40.00267562	-104.65662574
1,100.00	0.00	0.00	1,100.00	0.00	0.00	14,527,893.00	1,736,575.30	40.00267562	-104.65662574
1,200.00	0.00	0.00	1,200.00	0.00	0.00	14,527,893.00	1,736,575.30	40.00267562	-104.65662574
1,300.00	0.00	0.00	1,300.00	0.00	0.00	14,527,893.00	1,736,575.30	40.00267562	-104.65662574
1,400.00	0.00	0.00	1,400.00	0.00	0.00	14,527,893.00	1,736,575.30	40.00267562	-104.65662574
1,500.00	0.00	0.00	1,500.00	0.00	0.00	14,527,893.00	1,736,575.30	40.00267562	-104.65662574
1,600.00	0.00	0.00	1,600.00	0.00	0.00	14,527,893.00	1,736,575.30	40.00267562	-104.65662574
1,700.00	0.00	0.00	1,700.00	0.00	0.00	14,527,893.00	1,736,575.30	40.00267562	-104.65662574
1,800.00	0.00	0.00	1,800.00	0.00	0.00	14,527,893.00	1,736,575.30	40.00267562	-104.65662574
1,900.00	0.00	0.00	1,900.00	0.00	0.00	14,527,893.00	1,736,575.30	40.00267562	-104.65662574
2,000.00	0.00	0.00	2,000.00	0.00	0.00	14,527,893.00	1,736,575.30	40.00267562	-104.65662574
2,100.00	0.00	0.00	2,100.00	0.00	0.00	14,527,893.00	1,736,575.30	40.00267562	-104.65662574
2,200.00	0.00	0.00	2,200.00	0.00	0.00	14,527,893.00	1,736,575.30	40.00267562	-104.65662574
2,300.00	0.00	0.00	2,300.00	0.00	0.00	14,527,893.00	1,736,575.30	40.00267562	-104.65662574
2,400.00	0.00	0.00	2,400.00	0.00	0.00	14,527,893.00	1,736,575.30	40.00267562	-104.65662574
2,500.01	0.00	0.00	2,500.01	0.00	0.00	14,527,893.00	1,736,575.30	40.00267562	-104.65662574
2,600.01	0.00	0.00	2,600.01	0.00	0.00	14,527,893.00	1,736,575.30	40.00267562	-104.65662574
2,700.01	0.00	0.00	2,700.01	0.00	0.00	14,527,893.00	1,736,575.30	40.00267562	-104.65662574
2,800.01	0.00	0.00	2,800.01	0.00	0.00	14,527,893.00	1,736,575.30	40.00267562	-104.65662574
2,900.01	0.00	0.00	2,900.01	0.00	0.00	14,527,893.00	1,736,575.30	40.00267562	-104.65662574
3,000.01	0.00	0.00	3,000.01	0.00	0.00	14,527,893.00	1,736,575.30	40.00267562	-104.65662574
3,100.01	0.00	0.00	3,100.01	0.00	0.00	14,527,893.00	1,736,575.30	40.00267562	-104.65662574
3,200.01	0.00	0.00	3,200.01	0.00	0.00	14,527,893.00	1,736,575.30	40.00267562	-104.65662574
3,300.01	0.00	0.00	3,300.01	0.00	0.00	14,527,893.00	1,736,575.30	40.00267562	-104.65662574
3,400.01	0.00	0.00	3,400.01	0.00	0.00	14,527,893.00	1,736,575.30	40.00267562	-104.65662574
3,500.01	0.00	0.00	3,500.01	0.00	0.00	14,527,893.00	1,736,575.30	40.00267562	-104.65662574
3,600.01	0.00	0.00	3,600.01	0.00	0.00	14,527,893.00	1,736,575.30	40.00267562	-104.65662574
3,700.01	0.00	0.00	3,700.01	0.00	0.00	14,527,893.00	1,736,575.30	40.00267562	-104.65662574
3,800.01	0.00	0.00	3,800.01	0.00	0.00	14,527,893.00	1,736,575.30	40.00267562	-104.65662574
3,900.01	0.00	0.00	3,900.01	0.00	0.00	14,527,893.00	1,736,575.30	40.00267562	-104.65662574
4,000.01	0.00	0.00	4,000.01	0.00	0.00	14,527,893.00	1,736,575.30	40.00267562	-104.65662574
4,100.01	0.00	0.00	4,100.01	0.00	0.00	14,527,893.00	1,736,575.30	40.00267562	-104.65662574
4,200.01	0.00	0.00	4,200.01	0.00	0.00	14,527,893.00	1,736,575.30	40.00267562	-104.65662574
4,300.01	0.00	0.00	4,300.01	0.00	0.00	14,527,893.00	1,736,575.30	40.00267562	-104.65662574
4,400.01	0.00	0.00	4,400.01	0.00	0.00	14,527,893.00	1,736,575.30	40.00267562	-104.65662574
4,500.01	0.00	0.00	4,500.01	0.00	0.00	14,527,893.00	1,736,575.30	40.00267562	-104.65662574
4,600.01	0.00	0.00	4,600.01	0.00	0.00	14,527,893.00	1,736,575.30	40.00267562	-104.65662574
4,700.01	0.00	0.00	4,700.01	0.00	0.00	14,527,893.00	1,736,575.30	40.00267562	-104.65662574
4,800.01	0.00	0.00	4,800.01	0.00	0.00	14,527,893.00	1,736,575.30	40.00267562	-104.65662574
4,900.01	0.00	0.00	4,900.01	0.00	0.00	14,527,893.00	1,736,575.30	40.00267562	-104.65662574
5,000.00	0.00	0.00	5,000.00	0.00	0.00	14,527,893.00	1,736,575.30	40.00267562	-104.65662574
KOP Begin 10°/100' build									
5,000.01	0.00	245.90	5,000.01	0.00	0.00	14,527,893.00	1,736,575.30	40.00267562	-104.65662574
5,100.01	10.00	245.90	5,099.50	-3.56	-7.95	14,527,889.45	1,736,567.35	40.00266594	-104.65665417



<b>Database:</b>	DB_Aug0116_LT_v14	<b>Local Co-ordinate Reference:</b>	Well Buford 33-04-4L
<b>Company:</b>	Confluence Resources	<b>TVD Reference:</b>	RKB=5137+25 @ 5162.00ft
<b>Project:</b>	Weld County, Colorado	<b>MD Reference:</b>	RKB=5137+25 @ 5162.00ft
<b>Site:</b>	Section 34-T01N-R65W	<b>North Reference:</b>	Grid
<b>Well:</b>	Buford 33-04-4L	<b>Survey Calculation Method:</b>	Minimum Curvature
<b>Wellbore:</b>	Original Hole		
<b>Design:</b>	plan1		

Planned Survey									
Measured Depth (ft)	Inclination (°)	Azimuth (°)	Vertical Depth (ft)	+N/-S (ft)	+E/-W (ft)	Map Northing (usft)	Map Easting (usft)	Latitude	Longitude
5,200.01	20.00	245.90	5,195.97	-14.11	-31.54	14,527,878.89	1,736,543.75	40.00263720	-104.65673858
5,300.01	30.00	245.90	5,286.49	-31.35	-70.08	14,527,861.66	1,736,505.22	40.00259028	-104.65687640
5,400.01	40.00	245.90	5,368.30	-54.74	-122.37	14,527,838.26	1,736,452.93	40.00252659	-104.65706345
5,500.01	50.00	245.90	5,438.92	-83.58	-186.83	14,527,809.43	1,736,388.47	40.00244808	-104.65729404
5,500.75	50.08	245.90	5,439.40	-83.81	-187.35	14,527,809.19	1,736,387.95	40.00244744	-104.65729590
Begin 50.08° tangent section									
5,501.20	50.12	245.90	5,439.68	-83.95	-187.66	14,527,809.05	1,736,387.63	40.00244707	-104.65729701
5,600.01	50.12	245.90	5,503.04	-114.91	-256.88	14,527,778.09	1,736,318.42	40.00236276	-104.65754460
5,700.01	50.12	245.90	5,567.16	-146.25	-326.93	14,527,746.75	1,736,248.37	40.00227745	-104.65779517
5,800.01	50.12	245.90	5,631.28	-177.59	-396.98	14,527,715.42	1,736,178.32	40.00219214	-104.65804573
5,900.01	50.12	245.90	5,695.39	-208.92	-467.03	14,527,684.08	1,736,108.27	40.00210682	-104.65829629
6,000.01	50.12	245.90	5,759.51	-240.26	-537.08	14,527,652.75	1,736,038.22	40.00202150	-104.65854686
6,100.01	50.12	245.90	5,823.63	-271.59	-607.13	14,527,621.41	1,735,968.17	40.00193619	-104.65879742
6,200.01	50.12	245.90	5,887.75	-302.93	-677.18	14,527,590.07	1,735,898.12	40.00185087	-104.65904798
6,300.01	50.12	245.90	5,951.87	-334.27	-747.23	14,527,558.74	1,735,828.07	40.00176555	-104.65929854
6,400.01	50.12	245.90	6,015.99	-365.60	-817.28	14,527,527.40	1,735,758.02	40.00168024	-104.65954910
6,500.01	50.12	245.90	6,080.11	-396.94	-887.33	14,527,496.07	1,735,687.98	40.00159492	-104.65979965
6,600.01	50.12	245.90	6,144.22	-428.27	-957.37	14,527,464.73	1,735,617.93	40.00150960	-104.66005021
6,700.01	50.12	245.90	6,208.34	-459.61	-1,027.42	14,527,433.40	1,735,547.88	40.00142428	-104.66030077
6,800.01	50.12	245.90	6,272.46	-490.95	-1,097.47	14,527,402.06	1,735,477.83	40.00133896	-104.66055133
6,900.01	50.12	245.90	6,336.58	-522.28	-1,167.52	14,527,370.72	1,735,407.78	40.00125364	-104.66080188
7,000.01	50.12	245.90	6,400.70	-553.62	-1,237.57	14,527,339.39	1,735,337.73	40.00116832	-104.66105244
7,100.01	50.12	245.90	6,464.82	-584.95	-1,307.62	14,527,308.05	1,735,267.68	40.00108300	-104.66130299
7,200.01	50.12	245.90	6,528.94	-616.29	-1,377.67	14,527,276.72	1,735,197.63	40.00099767	-104.66155355
7,300.01	50.12	245.90	6,593.05	-647.63	-1,447.72	14,527,245.38	1,735,127.58	40.00091235	-104.66180410
7,400.01	50.12	245.90	6,657.17	-678.96	-1,517.77	14,527,214.04	1,735,057.53	40.00082703	-104.66205465
7,500.02	50.12	245.90	6,721.29	-710.30	-1,587.82	14,527,182.71	1,734,987.48	40.00074170	-104.66230521
7,600.02	50.12	245.90	6,785.41	-741.63	-1,657.87	14,527,151.37	1,734,917.43	40.00065638	-104.66255576
7,700.02	50.12	245.90	6,849.53	-772.97	-1,727.92	14,527,120.04	1,734,847.39	40.00057105	-104.66280631
7,800.02	50.12	245.90	6,913.65	-804.31	-1,797.97	14,527,088.70	1,734,777.34	40.00048573	-104.66305686
7,900.02	50.12	245.90	6,977.77	-835.64	-1,868.01	14,527,057.36	1,734,707.29	40.00040040	-104.66330741
7,974.15	50.12	245.90	7,025.30	-858.87	-1,919.94	14,527,034.13	1,734,655.36	40.00033715	-104.66349315
Begin 10°/100' build/turn									
7,974.32	50.12	245.90	7,025.41	-858.93	-1,920.06	14,527,034.08	1,734,655.24	40.00033700	-104.66349357
8,000.02	49.46	249.15	7,042.00	-866.43	-1,938.19	14,527,026.58	1,734,637.11	40.00031659	-104.66355841
8,100.02	47.80	262.30	7,108.26	-884.96	-2,010.59	14,527,008.05	1,734,564.71	40.00026645	-104.66381718
8,200.02	47.70	275.83	7,175.66	-886.16	-2,084.27	14,527,006.84	1,734,491.03	40.00026390	-104.66408030
8,300.02	49.16	289.06	7,242.18	-870.01	-2,157.00	14,527,023.00	1,734,418.30	40.00030902	-104.66433977
8,400.02	52.06	301.46	7,305.78	-836.99	-2,226.57	14,527,056.02	1,734,348.74	40.00040042	-104.66458772
8,500.02	56.14	312.75	7,364.54	-788.10	-2,290.85	14,527,104.91	1,734,284.45	40.00053534	-104.66481661
8,600.02	61.14	322.89	7,416.66	-724.83	-2,347.90	14,527,168.18	1,734,227.40	40.00070967	-104.66501948
8,700.02	66.84	332.05	7,460.56	-649.10	-2,395.99	14,527,243.90	1,734,179.31	40.00091812	-104.66519017
8,800.02	73.02	340.43	7,494.92	-563.22	-2,433.65	14,527,329.79	1,734,141.65	40.00115436	-104.66532350
8,900.02	79.51	348.26	7,518.68	-469.79	-2,459.74	14,527,423.22	1,734,115.56	40.00141120	-104.66541541
9,000.02	86.20	355.76	7,531.13	-371.65	-2,473.47	14,527,521.36	1,734,101.83	40.00168085	-104.66546311
9,053.93	89.83	359.75	7,533.00	-317.83	-2,475.58	14,527,575.17	1,734,099.73	40.00182866	-104.66546992
LP Begin 89.98° lateral section									
9,056.06	89.98	359.90	7,533.00	-315.70	-2,475.59	14,527,577.30	1,734,099.72	40.00183452	-104.66546991
9,100.02	89.98	359.90	7,533.02	-271.74	-2,475.66	14,527,621.26	1,734,099.64	40.00195523	-104.66546959
9,200.02	89.98	359.90	7,533.06	-171.74	-2,475.83	14,527,721.26	1,734,099.48	40.00222985	-104.66546885
9,300.02	89.98	359.90	7,533.10	-71.74	-2,476.00	14,527,821.26	1,734,099.31	40.00250446	-104.66546812
9,400.02	89.98	359.90	7,533.14	28.26	-2,476.17	14,527,921.26	1,734,099.14	40.00277908	-104.66546738
9,500.02	89.98	359.90	7,533.18	128.26	-2,476.34	14,528,021.26	1,734,098.97	40.00305369	-104.66546664
9,600.02	89.98	359.90	7,533.23	228.26	-2,476.51	14,528,121.26	1,734,098.80	40.00332831	-104.66546591



<b>Database:</b>	DB_Aug0116_LT_v14	<b>Local Co-ordinate Reference:</b>	Well Buford 33-04-4L
<b>Company:</b>	Confluence Resources	<b>TVD Reference:</b>	RKB=5137+25 @ 5162.00ft
<b>Project:</b>	Weld County, Colorado	<b>MD Reference:</b>	RKB=5137+25 @ 5162.00ft
<b>Site:</b>	Section 34-T01N-R65W	<b>North Reference:</b>	Grid
<b>Well:</b>	Buford 33-04-4L	<b>Survey Calculation Method:</b>	Minimum Curvature
<b>Wellbore:</b>	Original Hole		
<b>Design:</b>	plan1		

Planned Survey									
Measured Depth (ft)	Inclination (°)	Azimuth (°)	Vertical Depth (ft)	+N/-S (ft)	+E/-W (ft)	Map Northing (usft)	Map Easting (usft)	Latitude	Longitude
9,700.02	89.98	359.90	7,533.27	328.26	-2,476.67	14,528,221.26	1,734,098.63	40.00360293	-104.66546517
9,800.02	89.98	359.90	7,533.31	428.26	-2,476.84	14,528,321.26	1,734,098.46	40.00387754	-104.66546444
9,900.02	89.98	359.90	7,533.35	528.26	-2,477.01	14,528,421.26	1,734,098.29	40.00415216	-104.66546370
10,000.02	89.98	359.90	7,533.39	628.26	-2,477.18	14,528,521.26	1,734,098.12	40.00442677	-104.66546296
10,100.02	89.98	359.90	7,533.43	728.26	-2,477.35	14,528,621.26	1,734,097.95	40.00470139	-104.66546223
10,200.02	89.98	359.90	7,533.47	828.26	-2,477.52	14,528,721.26	1,734,097.78	40.00497600	-104.66546149
10,300.02	89.98	359.90	7,533.52	928.26	-2,477.69	14,528,821.26	1,734,097.61	40.00525062	-104.66546075
10,400.02	89.98	359.90	7,533.56	1,028.26	-2,477.86	14,528,921.26	1,734,097.45	40.00552524	-104.66546002
10,500.02	89.98	359.90	7,533.60	1,128.26	-2,478.03	14,529,021.26	1,734,097.28	40.00579985	-104.66545928
10,600.02	89.98	359.90	7,533.64	1,228.26	-2,478.20	14,529,121.26	1,734,097.11	40.00607447	-104.66545854
10,700.02	89.98	359.90	7,533.68	1,328.26	-2,478.37	14,529,221.26	1,734,096.94	40.00634908	-104.66545781
10,800.02	89.98	359.90	7,533.72	1,428.26	-2,478.54	14,529,321.26	1,734,096.77	40.00662370	-104.66545707
10,900.02	89.98	359.90	7,533.76	1,528.26	-2,478.70	14,529,421.26	1,734,096.60	40.00689831	-104.66545634
11,000.02	89.98	359.90	7,533.81	1,628.26	-2,478.87	14,529,521.26	1,734,096.43	40.00717293	-104.66545560
11,100.02	89.98	359.90	7,533.85	1,728.26	-2,479.04	14,529,621.26	1,734,096.26	40.00744755	-104.66545486
11,200.02	89.98	359.90	7,533.89	1,828.26	-2,479.21	14,529,721.26	1,734,096.09	40.00772216	-104.66545413
11,300.02	89.98	359.90	7,533.93	1,928.26	-2,479.38	14,529,821.26	1,734,095.92	40.00799678	-104.66545339
11,400.02	89.98	359.90	7,533.97	2,028.26	-2,479.55	14,529,921.26	1,734,095.75	40.00827139	-104.66545265
11,500.02	89.98	359.90	7,534.01	2,128.26	-2,479.72	14,530,021.26	1,734,095.58	40.00854601	-104.66545192
11,600.02	89.98	359.90	7,534.05	2,228.26	-2,479.89	14,530,121.26	1,734,095.42	40.00882062	-104.66545118
11,700.02	89.98	359.90	7,534.09	2,328.26	-2,480.06	14,530,221.26	1,734,095.25	40.00909524	-104.66545044
11,800.02	89.98	359.90	7,534.14	2,428.26	-2,480.23	14,530,321.26	1,734,095.08	40.00936986	-104.66544971
11,900.02	89.98	359.90	7,534.18	2,528.26	-2,480.40	14,530,421.26	1,734,094.91	40.00964447	-104.66544897
12,000.02	89.98	359.90	7,534.22	2,628.26	-2,480.57	14,530,521.26	1,734,094.74	40.00991909	-104.66544823
12,100.02	89.98	359.90	7,534.26	2,728.26	-2,480.73	14,530,621.26	1,734,094.57	40.01019370	-104.66544750
12,200.02	89.98	359.90	7,534.30	2,828.26	-2,480.90	14,530,721.26	1,734,094.40	40.01046832	-104.66544676
12,300.02	89.98	359.90	7,534.34	2,928.26	-2,481.07	14,530,821.26	1,734,094.23	40.01074293	-104.66544603
12,400.03	89.98	359.90	7,534.38	3,028.26	-2,481.24	14,530,921.26	1,734,094.06	40.01101755	-104.66544529
12,500.03	89.98	359.90	7,534.43	3,128.26	-2,481.41	14,531,021.26	1,734,093.89	40.01129216	-104.66544455
12,600.03	89.98	359.90	7,534.47	3,228.26	-2,481.58	14,531,121.26	1,734,093.72	40.01156678	-104.66544382
12,700.03	89.98	359.90	7,534.51	3,328.26	-2,481.75	14,531,221.26	1,734,093.55	40.01184139	-104.66544308
12,800.03	89.98	359.90	7,534.55	3,428.26	-2,481.92	14,531,321.26	1,734,093.39	40.01211601	-104.66544234
12,900.03	89.98	359.90	7,534.59	3,528.26	-2,482.09	14,531,421.26	1,734,093.22	40.01239063	-104.66544161
13,000.03	89.98	359.90	7,534.63	3,628.26	-2,482.26	14,531,521.26	1,734,093.05	40.01266524	-104.66544087
13,100.03	89.98	359.90	7,534.67	3,728.26	-2,482.43	14,531,621.26	1,734,092.88	40.01293986	-104.66544013
13,200.03	89.98	359.90	7,534.72	3,828.26	-2,482.60	14,531,721.26	1,734,092.71	40.01321447	-104.66543940
13,300.03	89.98	359.90	7,534.76	3,928.26	-2,482.76	14,531,821.26	1,734,092.54	40.01348909	-104.66543866
13,400.03	89.98	359.90	7,534.80	4,028.26	-2,482.93	14,531,921.26	1,734,092.37	40.01376370	-104.66543792
13,500.03	89.98	359.90	7,534.84	4,128.26	-2,483.10	14,532,021.26	1,734,092.20	40.01403832	-104.66543719
13,600.03	89.98	359.90	7,534.88	4,228.26	-2,483.27	14,532,121.26	1,734,092.03	40.01431293	-104.66543645
13,700.03	89.98	359.90	7,534.92	4,328.26	-2,483.44	14,532,221.26	1,734,091.86	40.01458755	-104.66543571
13,800.03	89.98	359.90	7,534.96	4,428.26	-2,483.61	14,532,321.26	1,734,091.69	40.01486216	-104.66543498
13,900.03	89.98	359.90	7,535.01	4,528.26	-2,483.78	14,532,421.25	1,734,091.52	40.01513678	-104.66543424
14,000.03	89.98	359.90	7,535.05	4,628.26	-2,483.95	14,532,521.25	1,734,091.36	40.01541139	-104.66543350
14,100.03	89.98	359.90	7,535.09	4,728.26	-2,484.12	14,532,621.25	1,734,091.19	40.01568601	-104.66543277
14,200.03	89.98	359.90	7,535.13	4,828.26	-2,484.29	14,532,721.25	1,734,091.02	40.01596062	-104.66543203
14,300.03	89.98	359.90	7,535.17	4,928.26	-2,484.46	14,532,821.25	1,734,090.85	40.01623524	-104.66543129
14,400.03	89.98	359.90	7,535.21	5,028.26	-2,484.63	14,532,921.25	1,734,090.68	40.01650985	-104.66543055
14,500.03	89.98	359.90	7,535.25	5,128.26	-2,484.79	14,533,021.25	1,734,090.51	40.01678447	-104.66542982
14,600.03	89.98	359.90	7,535.30	5,228.26	-2,484.96	14,533,121.25	1,734,090.34	40.01705908	-104.66542908
14,700.03	89.98	359.90	7,535.34	5,328.26	-2,485.13	14,533,221.25	1,734,090.17	40.01733370	-104.66542834
14,800.03	89.98	359.90	7,535.38	5,428.26	-2,485.30	14,533,321.25	1,734,090.00	40.01760832	-104.66542761
14,900.03	89.98	359.90	7,535.42	5,528.26	-2,485.47	14,533,421.25	1,734,089.83	40.01788293	-104.66542687
15,000.03	89.98	359.90	7,535.46	5,628.26	-2,485.64	14,533,521.25	1,734,089.66	40.01815755	-104.66542613
15,100.03	89.98	359.90	7,535.50	5,728.26	-2,485.81	14,533,621.25	1,734,089.49	40.01843216	-104.66542540



<b>Database:</b>	DB_Aug0116_LT_v14	<b>Local Co-ordinate Reference:</b>	Well Buford 33-04-4L
<b>Company:</b>	Confluence Resources	<b>TVD Reference:</b>	RKB=5137+25 @ 5162.00ft
<b>Project:</b>	Weld County, Colorado	<b>MD Reference:</b>	RKB=5137+25 @ 5162.00ft
<b>Site:</b>	Section 34-T01N-R65W	<b>North Reference:</b>	Grid
<b>Well:</b>	Buford 33-04-4L	<b>Survey Calculation Method:</b>	Minimum Curvature
<b>Wellbore:</b>	Original Hole		
<b>Design:</b>	plan1		

Planned Survey										
Measured Depth (ft)	Inclination (°)	Azimuth (°)	Vertical Depth (ft)	+N/-S (ft)	+E/-W (ft)	Map Northing (usft)	Map Easting (usft)	Latitude	Longitude	
15,200.03	89.98	359.90	7,535.54	5,828.26	-2,485.98	14,533,721.25	1,734,089.33	40.01870678	-104.66542466	
15,300.03	89.98	359.90	7,535.59	5,928.26	-2,486.15	14,533,821.25	1,734,089.16	40.01898139	-104.66542392	
15,400.03	89.98	359.90	7,535.63	6,028.26	-2,486.32	14,533,921.25	1,734,088.99	40.01925601	-104.66542319	
15,500.03	89.98	359.90	7,535.67	6,128.26	-2,486.49	14,534,021.25	1,734,088.82	40.01953062	-104.66542245	
15,600.03	89.98	359.90	7,535.71	6,228.26	-2,486.66	14,534,121.25	1,734,088.65	40.01980524	-104.66542171	
15,700.03	89.98	359.90	7,535.75	6,328.26	-2,486.82	14,534,221.25	1,734,088.48	40.02007985	-104.66542097	
15,800.03	89.98	359.90	7,535.79	6,428.26	-2,486.99	14,534,321.25	1,734,088.31	40.02035447	-104.66542024	
15,900.03	89.98	359.90	7,535.83	6,528.26	-2,487.16	14,534,421.25	1,734,088.14	40.02062908	-104.66541950	
16,000.03	89.98	359.90	7,535.88	6,628.26	-2,487.33	14,534,521.25	1,734,087.97	40.02090370	-104.66541876	
16,100.03	89.98	359.90	7,535.92	6,728.26	-2,487.50	14,534,621.25	1,734,087.80	40.02117831	-104.66541803	
16,200.03	89.98	359.90	7,535.96	6,828.26	-2,487.67	14,534,721.25	1,734,087.63	40.02145293	-104.66541729	
16,300.03	89.98	359.90	7,536.00	6,928.26	-2,487.84	14,534,821.25	1,734,087.46	40.02172754	-104.66541655	
16,400.03	89.98	359.90	7,536.04	7,028.26	-2,488.01	14,534,921.25	1,734,087.30	40.02200216	-104.66541581	
16,500.03	89.98	359.90	7,536.08	7,128.26	-2,488.18	14,535,021.25	1,734,087.13	40.02227677	-104.66541508	
16,600.03	89.98	359.90	7,536.12	7,228.26	-2,488.35	14,535,121.25	1,734,086.96	40.02255139	-104.66541434	
16,700.03	89.98	359.90	7,536.17	7,328.26	-2,488.52	14,535,221.25	1,734,086.79	40.02282600	-104.66541360	
16,800.03	89.98	359.90	7,536.21	7,428.26	-2,488.69	14,535,321.25	1,734,086.62	40.02310062	-104.66541287	
16,900.03	89.98	359.90	7,536.25	7,528.26	-2,488.85	14,535,421.25	1,734,086.45	40.02337523	-104.66541213	
17,000.03	89.98	359.90	7,536.29	7,628.26	-2,489.02	14,535,521.25	1,734,086.28	40.02364985	-104.66541139	
17,100.03	89.98	359.90	7,536.33	7,728.26	-2,489.19	14,535,621.25	1,734,086.11	40.02392446	-104.66541065	
17,200.03	89.98	359.90	7,536.37	7,828.26	-2,489.36	14,535,721.25	1,734,085.94	40.02419907	-104.66540992	
17,300.03	89.98	359.90	7,536.41	7,928.26	-2,489.53	14,535,821.25	1,734,085.77	40.02447369	-104.66540918	
17,400.04	89.98	359.90	7,536.46	8,028.26	-2,489.70	14,535,921.25	1,734,085.60	40.02474830	-104.66540844	
17,500.04	89.98	359.90	7,536.50	8,128.26	-2,489.87	14,536,021.25	1,734,085.43	40.02502292	-104.66540771	
17,600.04	89.98	359.90	7,536.54	8,228.26	-2,490.04	14,536,121.25	1,734,085.27	40.02529753	-104.66540697	
17,700.04	89.98	359.90	7,536.58	8,328.26	-2,490.21	14,536,221.25	1,734,085.10	40.02557215	-104.66540623	
17,800.04	89.98	359.90	7,536.62	8,428.26	-2,490.38	14,536,321.25	1,734,084.93	40.02584676	-104.66540549	
17,900.04	89.98	359.90	7,536.66	8,528.26	-2,490.55	14,536,421.25	1,734,084.76	40.02612138	-104.66540476	
18,000.04	89.98	359.90	7,536.70	8,628.26	-2,490.72	14,536,521.25	1,734,084.59	40.02639599	-104.66540402	
18,100.04	89.98	359.90	7,536.74	8,728.26	-2,490.88	14,536,621.25	1,734,084.42	40.02667061	-104.66540328	
18,200.04	89.98	359.90	7,536.79	8,828.26	-2,491.05	14,536,721.25	1,734,084.25	40.02694522	-104.66540254	
18,300.04	89.98	359.90	7,536.83	8,928.26	-2,491.22	14,536,821.25	1,734,084.08	40.02721984	-104.66540181	
18,400.04	89.98	359.90	7,536.87	9,028.26	-2,491.39	14,536,921.25	1,734,083.91	40.02749445	-104.66540107	
18,500.04	89.98	359.90	7,536.91	9,128.26	-2,491.56	14,537,021.25	1,734,083.74	40.02776907	-104.66540033	
18,600.04	89.98	359.90	7,536.95	9,228.26	-2,491.73	14,537,121.25	1,734,083.57	40.02804368	-104.66539959	
18,700.04	89.98	359.90	7,536.99	9,328.26	-2,491.90	14,537,221.25	1,734,083.40	40.02831830	-104.66539886	
18,714.20	89.98	359.90	7,537.00	9,342.42	-2,491.92	14,537,235.41	1,734,083.38	40.02835717	-104.66539875	
PBHL/TD 18714.19 MD 7537.00 TVD										
18,716.33	89.98	359.90	7,537.00	9,344.55	-2,491.93	14,537,237.54	1,734,083.38	40.02836304	-104.66539874	

Design Targets										
Target Name	Dip Angle (°)	Dip Dir. (°)	TVD (ft)	+N/-S (ft)	+E/-W (ft)	Northing (usft)	Easting (usft)	Latitude	Longitude	
LP Buford 33-04-4L 470 - hit/miss target - Shape - Point	0.00	359.78	7,533.00	-315.70	-2,475.59	14,527,577.30	1,734,099.72	40.00183452	-104.66546991	
BHL Buford 33-04-4L 47 - plan misses target center by 37.22ft at 18716.26ft MD (7537.00 TVD, 9344.48 N, -2491.93 E) - Point	0.00	359.78	7,537.00	9,344.42	-2,529.15	14,537,237.40	1,734,046.16	40.02836305	-104.66553169	

<b>Database:</b>	DB_Aug0116_LT_v14	<b>Local Co-ordinate Reference:</b>	Well Buford 33-04-4L
<b>Company:</b>	Confluence Resources	<b>TVD Reference:</b>	RKB=5137+25 @ 5162.00ft
<b>Project:</b>	Weld County, Colorado	<b>MD Reference:</b>	RKB=5137+25 @ 5162.00ft
<b>Site:</b>	Section 34-T01N-R65W	<b>North Reference:</b>	Grid
<b>Well:</b>	Buford 33-04-4L	<b>Survey Calculation Method:</b>	Minimum Curvature
<b>Wellbore:</b>	Original Hole		
<b>Design:</b>	plan1		

Plan Annotations				
Measured Depth (ft)	Vertical Depth (ft)	Local Coordinates		Comment
		+N/-S (ft)	+E/-W (ft)	
5,000.00	5,000.00	0.00	0.00	KOP Begin 10°/100' build
5,500.75	5,439.40	-83.81	-187.35	Begin 50.08° tangent section
7,974.15	7,025.30	-858.87	-1,919.94	Begin 10°/100' build/turn
9,053.93	7,533.00	-317.83	-2,475.58	LP Begin 89.98° lateral section
18,714.20	7,537.00	9,342.42	-2,491.92	PBHL/TD 18714.19 MD 7537.00 TVD