



Kerr-McGee Oil & Gas Onshore LP

A subsidiary of Anadarko Petroleum Corporation

1099 18th Street
Denver, CO 80202
720-929-6000

June 6, 2017

Matt Lepore
Director, Colorado Oil and Gas Conservation Commission
Department of Natural Resources
The Chancery Building
1120 Lincoln Street, Suite 801
Denver, CO 80203

Re: **30 Day Certification Letter - 318A.e**
ROBIN 9-12HZ – DOC # 401279251
Township 1 North, Range 65 West
Section 9: SWSE
Unit Acreage: 360 Acres
Unit Spacing: T1N-R65W Sec 9: SWSE; Sec 16: W2E2; Sec 21: W2E2
Weld County, Colorado

Dear Director Lepore:

Kerr-McGee Oil and Gas Onshore LP (“KMG”) hereby certifies that a thirty (30) day notice has been given by certified mail to all mineral owners in the proposed wellbore spacing unit. We have not received any objections to this spacing unit or location. KMG hereby respectfully requests approval of this well.

If you have any questions or issues regarding this permit, please contact me at (720) 929-6907.

Sincerely,

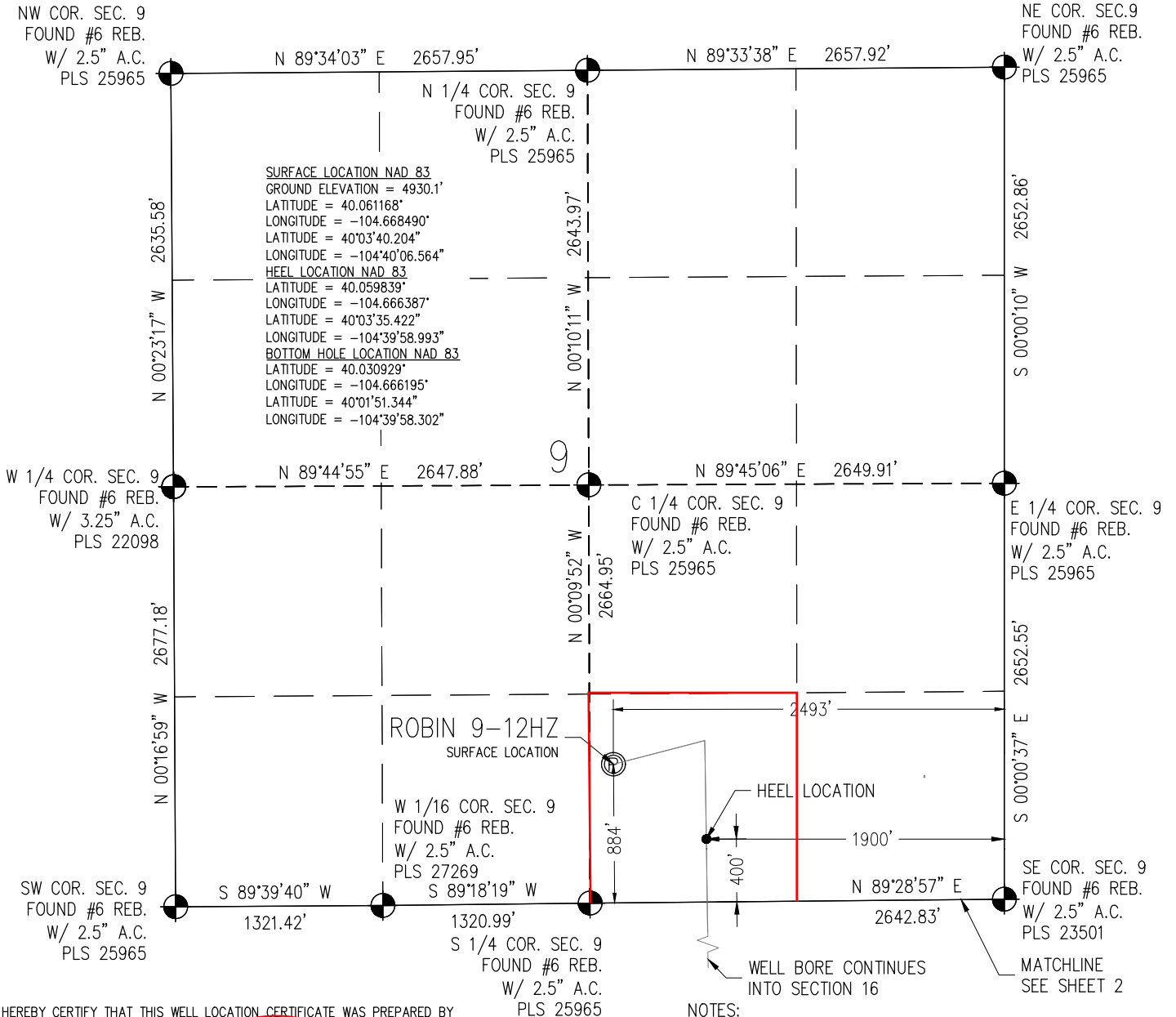
KERR-McGEE OIL AND GAS ONSHORE LP

A handwritten signature in black ink, appearing to read 'Shayelyn Marshall'.

Shayelyn Marshall
Regulatory Analyst II

PROPOSED SPACING UNIT

T1N, R65W



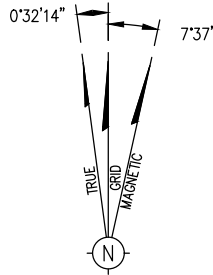
I HEREBY CERTIFY THAT THIS WELL LOCATION CERTIFICATE WAS PREPARED BY ME, OR UNDER MY DIRECT SUPERVISION, THAT THE FIELD WORK WAS COMPLETED ON 3/22/2017, THAT THIS IS NOT A LAND SURVEY PLAT OR AN IMPROVEMENT SURVEY PLAT, AND THAT IT IS NOT TO BE RELIED UPON FOR ESTABLISHMENT OF FENCE, BUILDING, OR OTHER FUTURE IMPROVEMENT LINES.

AARON A. DEMO
Professional Land Surveyor Registration No. 38285
State of Colorado
FOR AND ON BEHALF OF BASELINE ENGINEERING CORP.

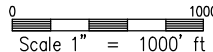
NOTICE
ACCORDING TO COLORADO STATE LAW YOU MUST COMMENCE ANY LEGAL ACTION BASED UPON ANY DEFECT IN THIS SURVEY WITHIN THREE YEARS AFTER YOU FIRST DISCOVER SUCH DEFECT. IN NO EVENT MAY ANY ACTION BASED UPON ANY DEFECT IN THIS SURVEY BE COMMENCED MORE THAN TEN YEARS FROM THE DATE ON THE CERTIFICATION SHOWN HERON.

NOTES:

- INDICATES SECTION CORNER
- INDICATES CALCULATED CORNER
- (C) INDICATES CALCULATED DIMENSION
- ELEVATION BASED ON NAVD88 (GEOID12B)
- BASIS OF BEARING DERIVED FROM COLORADO COORDINATE SYSTEM OF 1983 NORTH ZONE.
- ALL MEASURED DISTANCES ARE GRID. COMBINED SCALE FACTOR 0.99972702 CALCULATED FROM THE SE CORNER OF SECTION 9, T1N, R65W
- OPERATOR: JEFF VANHORN / PDOP = 1.5
- SEE ADDENDUM TO WELL LOCATION CERTIFICATE FOR EXISTING IMPROVEMENTS WITHIN 500' OF THE WELL PAD.
- WELL FOOTAGES ARE MEASURED AT RIGHT ANGLES TO THE SECTION LINES.
- THE BOTTOM OF HOLE BEARS S00°49'51"E 10531' FROM THE HEEL LOCATION



NOTE
MAGNETIC NORTH IS CURRENT AS OF 03/24/2017
MAGNETIC NORTH CHANGES WEST 00'06" PER YEAR.



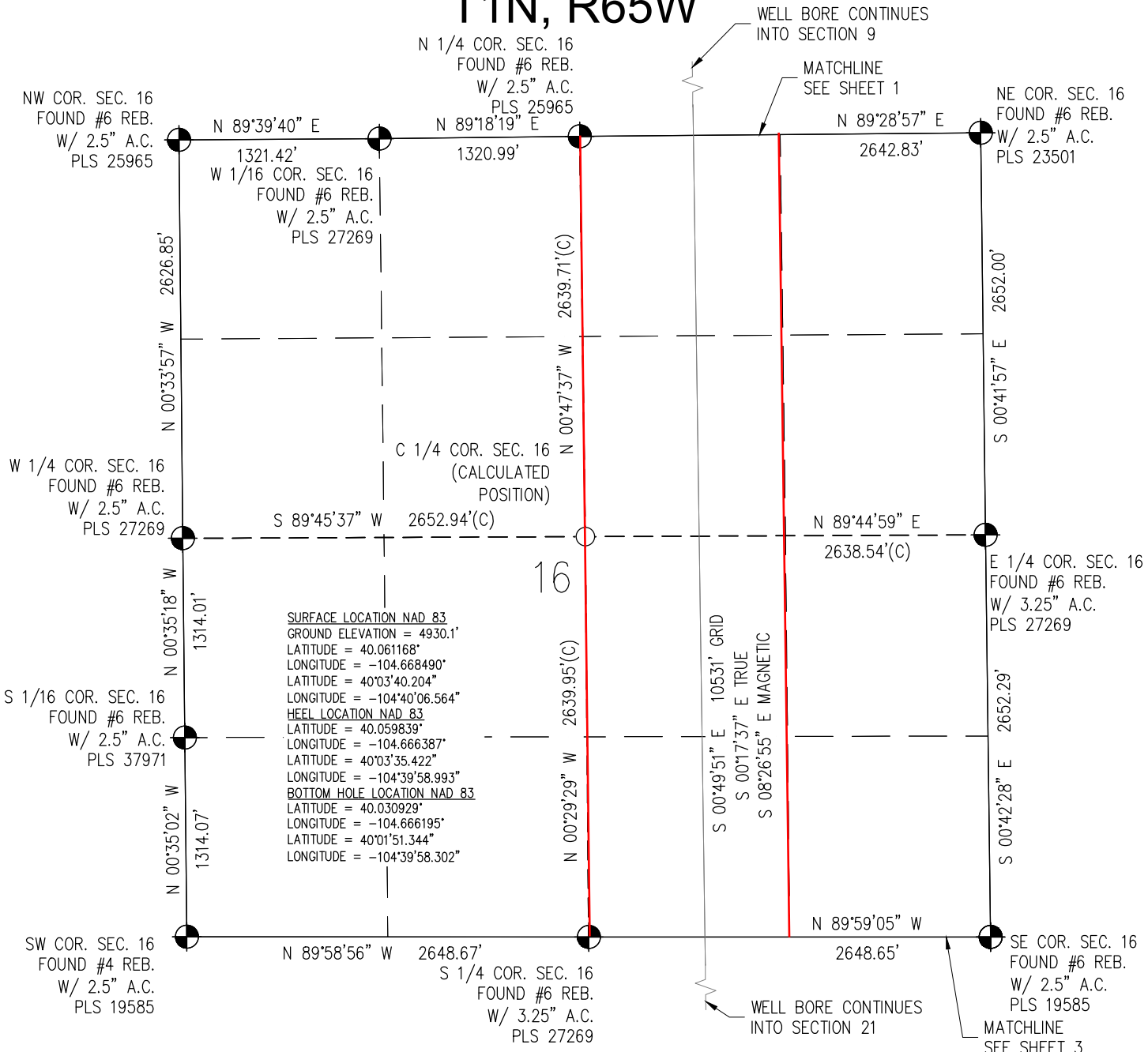
WELL PAD - ROBIN 9-6HZ
ROBIN 9-12HZ
WELL LOCATION CERTIFICATE
884' FSL & 2493' FEL SWSE (SURFACE)
400' FSL & 1900' FEL SWSE (HEEL)
LOCATED IN SECTION 9
T1N, R65W, 6TH P.M.
WELD COUNTY, COLORADO
468' FSL & 1850' FEL SWSE (BOTTOM)
LOCATED IN SECTION 21
T1N, R65W, 6TH P.M.
WELD COUNTY, COLORADO

**Kerr-McGee Oil &
Gas Onshore L.P.**
1099 18th Street
Denver, Colorado 80202

DRAWN BY JM	CHECKED BY AAD
INITIAL SUBMITTAL 3/31/2017	
REVISED 4/18/2017	
DRAWING SIZE 8.5" X 11"	
JOB NO. ANAO1NG5W09-02	
SHEET 1 OF 3	

BASELINE
Engineering - Planning - Surveying
4007 S. LINCOLN AVENUE, SUITE 405 - LOVELAND, COLORADO 80537
P: 970.353.7800 - F: 970.353.7801 - www.baselinescorp.com

T1N, R65W



SURFACE LOCATION NAD 83
 GROUND ELEVATION = 4930.1'
 LATITUDE = 40.061168"
 LONGITUDE = -104.668490"
HEEL LOCATION NAD 83
 LATITUDE = 40.03'40.204"
 LONGITUDE = -104.40'06.564"
BOTTOM HOLE LOCATION NAD 83
 LATITUDE = 40.030929"
 LONGITUDE = -104.39'58.993"
 LATITUDE = 40.01'51.344"
 LONGITUDE = -104.39'58.302"

I HEREBY CERTIFY THAT THIS WELL LOCATION CERTIFICATE WAS PREPARED BY ME, OR UNDER MY DIRECT SUPERVISION, THAT THE FIELD WORK WAS COMPLETED ON 3/22/2017, THAT THIS IS NOT A LAND SURVEY PLAT OR AN IMPROVEMENT SURVEY PLAT, AND THAT IT IS NOT TO BE RELIED UPON FOR ESTABLISHMENT OF FENCE, BUILDING, OR OTHER FUTURE IMPROVEMENT LINES.



AARON A. DEMO
 Professional Land Surveyor Registration No. 38285
 State of Colorado
 FOR AND ON BEHALF OF BASELINE ENGINEERING CORP.



NOTE
 MAGNETIC NORTH IS CURRENT AS OF 03/24/2017
 MAGNETIC NORTH CHANGES WEST 00'06\"/>

- NOTES:**
- INDICATES SECTION CORNER
 - INDICATES CALCULATED CORNER
 - (C) INDICATES CALCULATED DIMENSION
 - ELEVATION BASED ON NAVD88 (GEOID12B)
 - BASIS OF BEARING DERIVED FROM COLORADO COORDINATE SYSTEM OF 1983 NORTH ZONE.
 - ALL MEASURED DISTANCES ARE GRID. COMBINED SCALE FACTOR 0.99972702 CALCULATED FROM THE SE CORNER OF SECTION 9, T1N, R65W
 - OPERATOR: JEFF VANHORN / PDOP = 1.5
 - SEE ADDENDUM TO WELL LOCATION CERTIFICATE FOR EXISTING IMPROVEMENTS WITHIN 500' OF THE WELL PAD.
 - WELL FOOTAGES ARE MEASURED AT RIGHT ANGLES TO THE SECTION LINES.
 - THE BOTTOM OF HOLE BEARS S00°49'51\"/>

WELL PAD - ROBIN 9-6HZ
 ROBIN 9-12HZ
 WELL LOCATION CERTIFICATE
 884' FSL & 2493' FEL SWSE (SURFACE)
 400' FSL & 1900' FEL SWSE (HEEL)
 LOCATED IN SECTION 9
 T1N, R65W, 6TH P.M.
 WELD COUNTY, COLORADO
 468' FSL & 1850' FEL SWSE (BOTTOM)
 LOCATED IN SECTION 21
 T1N, R65W, 6TH P.M.
 WELD COUNTY, COLORADO

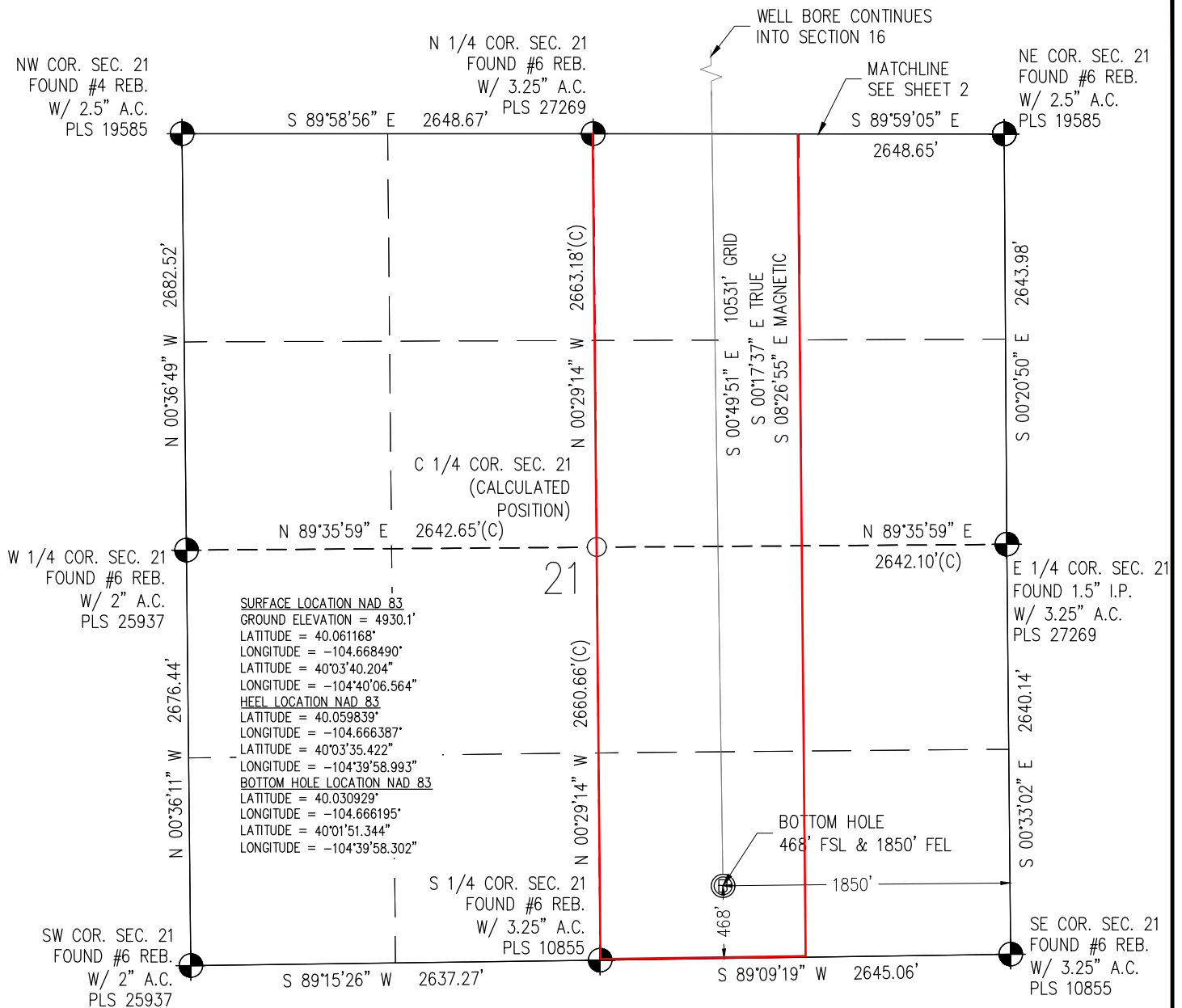
Kerr-McGee Oil & Gas Onshore L.P.
 1099 18th Street
 Denver, Colorado 80202

DRAWN BY	CHECKED BY
JMH	AAD
INITIAL SUBMITTAL	3/31/2017
REVISED	4/18/2017
DRAWING SIZE	8.5" X 11"
JOB NO.	ANAO1NG5W09-02
SHEET	2 OF 3

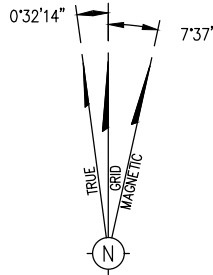
BASELINE
 Engineering - Planning - Surveying
 4007 S. LINCOLN AVENUE, SUITE 405 - LOVELAND, COLORADO 80537
 P: 970.353.7800 - F: 970.353.7801 - www.baselinescorp.com

M:_co - Well Head Staking\ANAO1NG5W09-02(Robin)\ANAO1NG5W09-02(Robin)_9-6HZ.PAD Well Cert.dwg, 4/18/2017 11:06:32 AM, Joyme Hobin

T1N, R65W



I HEREBY CERTIFY THAT THIS WELL LOCATION CERTIFICATE WAS PREPARED BY ME, OR UNDER MY DIRECT SUPERVISION, THAT THE FIELD WORK WAS COMPLETED ON 3/22/2017, THAT THIS IS NOT A LAND SURVEY PLAT OR AN IMPROVEMENT SURVEY PLAT, AND THAT IT IS NOT TO BE RELIED UPON FOR ESTABLISHMENT OF FENCE, BUILDING, OR OTHER FUTURE IMPROVEMENT LINES.



NOTE
 MAGNETIC NORTH IS CURRENT AS OF 03/24/2017
 MAGNETIC NORTH CHANGES WEST 00'06" PER YEAR.

Scale 1" = 1000' ft

AARON A. DEMO
 Professional Land Surveyor Registration No. 38285
 State of Colorado
 FOR AND ON BEHALF OF BASELINE ENGINEERING CORP.

NOTICE
 ACCORDING TO COLORADO STATE LAW YOU MUST COMMENCE ANY LEGAL ACTION BASED UPON ANY DEFECT IN THIS SURVEY WITHIN THREE YEARS AFTER YOU FIRST DISCOVER SUCH DEFECT. IN NO EVENT MAY ANY ACTION BASED UPON ANY DEFECT IN THIS SURVEY BE COMMENCED MORE THAN TEN YEARS FROM THE DATE ON THE CERTIFICATION SHOWN HEREON.



WELL PAD - ROBIN 9-6HZ
 ROBIN 9-12HZ
 WELL LOCATION CERTIFICATE
 884' FSL & 2493' FEL SWSE (SURFACE)
 400' FSL & 1900' FEL SWSE (HEEL)
 LOCATED IN SECTION 9
 T1N, R65W, 6TH P.M.
 WELD COUNTY, COLORADO
 468' FSL & 1850' FEL SWSE (BOTTOM)
 LOCATED IN SECTION 21
 T1N, R65W, 6TH P.M.
 WELD COUNTY, COLORADO

**Kerr-McGee Oil &
 Gas Onshore L.P.**
 1099 18th Street
 Denver, Colorado 80202

DRAWN BY JMH	CHECKED BY AAD
INITIAL SUBMITTAL 3/31/2017	
REVISED 4/18/2017	
DRAWING SIZE 8.5" X 11"	
JOB NO. ANAO1NG5W09-02	
SHEET 3 of 3	

BASELINE
 Engineering - Planning - Surveying

4007 S. LINCOLN AVENUE, SUITE 405 - LOVELAND, COLORADO 80537
 P: 970.353.7800 - F: 970.353.7801 - www.baselinincorp.com