

T1N, R65W

NW COR. SEC. 9
FOUND #6 REB.
W/ 2.5" A.C.
PLS 25965

NE COR. SEC.9
FOUND #6 REB.
W/ 2.5" A.C.
PLS 25965

N 89°34'03" E 2657.95'
N 1/4 COR. SEC. 9
FOUND #6 REB.
W/ 2.5" A.C.
PLS 25965
N 89°33'38" E 2657.92'

SURFACE LOCATION NAD 83
GROUND ELEVATION = 4930.1'
LATITUDE = 40.061168"
LONGITUDE = -104.668490"
LATITUDE = 40°03'40.204"
LONGITUDE = -104°40'06.564"
HEEL LOCATION NAD 83
LATITUDE = 40.059839"
LONGITUDE = -104.666387"
LATITUDE = 40°03'35.422"
LONGITUDE = -104°39'58.993"
BOTTOM HOLE LOCATION NAD 83
LATITUDE = 40.030929"
LONGITUDE = -104.666195"
LATITUDE = 40°01'51.344"
LONGITUDE = -104°39'58.302"

N 00°23'17" W 2635.58'

N 00°10'11" W 2643.97'

S 00°00'10" W 2652.86'

W 1/4 COR. SEC. 9
FOUND #6 REB.
W/ 3.25" A.C.
PLS 22098

N 89°44'55" E 2647.88'
N 89°45'06" E 2649.91'

C 1/4 COR. SEC. 9
FOUND #6 REB.
W/ 2.5" A.C.
PLS 25965

E 1/4 COR. SEC. 9
FOUND #6 REB.
W/ 2.5" A.C.
PLS 25965

N 00°16'59" W 2677.18'

N 00°09'52" W 2664.95'

S 00°00'37" E 2652.55'

ROBIN 9-12HZ
SURFACE LOCATION

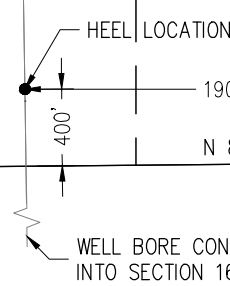
W 1/16 COR. SEC. 9
FOUND #6 REB.
W/ 2.5" A.C.
PLS 27269

SW COR. SEC. 9
FOUND #6 REB.
W/ 2.5" A.C.
PLS 25965

S 89°39'40" W 1321.42'
S 89°18'19" W 1320.99'
N 89°28'57" E 2642.83'

SE COR. SEC. 9
FOUND #6 REB.
W/ 2.5" A.C.
PLS 23501

S 1/4 COR. SEC. 9
FOUND #6 REB.
W/ 2.5" A.C.
PLS 25965

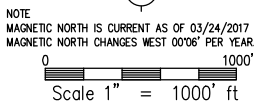


I HEREBY CERTIFY THAT THIS WELL LOCATION CERTIFICATE WAS PREPARED BY ME, OR UNDER MY DIRECT SUPERVISION, THAT THE FIELD WORK WAS COMPLETED ON 3/22/2017, THAT THIS IS NOT A LAND SURVEY PLAT OR AN IMPROVEMENT SURVEY PLAT, AND THAT IT IS NOT TO BE RELIED UPON FOR ESTABLISHMENT OF FENCE, BUILDING, OR OTHER FUTURE IMPROVEMENT LINES.



AARON A. DEMO
Professional Land Surveyor Registration No. 38285
State of Colorado
FOR AND ON BEHALF OF BASELINE ENGINEERING CORP.

NOTICE
ACCORDING TO COLORADO STATE LAW YOU MUST COMMENCE ANY LEGAL ACTION BASED UPON ANY DEFECT IN THIS SURVEY WITHIN THREE YEARS AFTER YOU FIRST DISCOVER SUCH DEFECT. IN NO EVENT MAY ANY ACTION BASED UPON ANY DEFECT IN THIS SURVEY BE COMMENCED MORE THAN TEN YEARS FROM THE DATE ON THE CERTIFICATION SHOWN HERON.



- NOTES:
- INDICATES SECTION CORNER
 - INDICATES CALCULATED CORNER
 - (C) INDICATES CALCULATED DIMENSION
 - ELEVATION BASED ON NAVD88 (GEOID12B)
 - BASIS OF BEARING DERIVED FROM COLORADO COORDINATE SYSTEM OF 1983 NORTH ZONE.
 - ALL MEASURED DISTANCES ARE GRID. COMBINED SCALE FACTOR 0.99972702 CALCULATED FROM THE SE CORNER OF SECTION 9, T1N, R65W
 - OPERATOR: JEFF VANHORN / PDOP = 1.5
 - SEE ADDENDUM TO WELL LOCATION CERTIFICATE FOR EXISTING IMPROVEMENTS WITHIN 500' OF THE WELL PAD.
 - WELL FOOTAGES ARE MEASURED AT RIGHT ANGLES TO THE SECTION LINES.
 - THE BOTTOM OF HOLE BEARS S00°49'51"E 10531' FROM THE HEEL LOCATION

WELL PAD - ROBIN 9-6HZ
ROBIN 9-12HZ
WELL LOCATION CERTIFICATE
884' FSL & 2493' FEL SWSE (SURFACE)
400' FSL & 1900' FEL SWSE (HEEL)
LOCATED IN SECTION 9
T1N, R65W, 6TH P.M.
WELD COUNTY, COLORADO
468' FSL & 1850' FEL SWSE (BOTTOM)
LOCATED IN SECTION 21
T1N, R65W, 6TH P.M.
WELD COUNTY, COLORADO

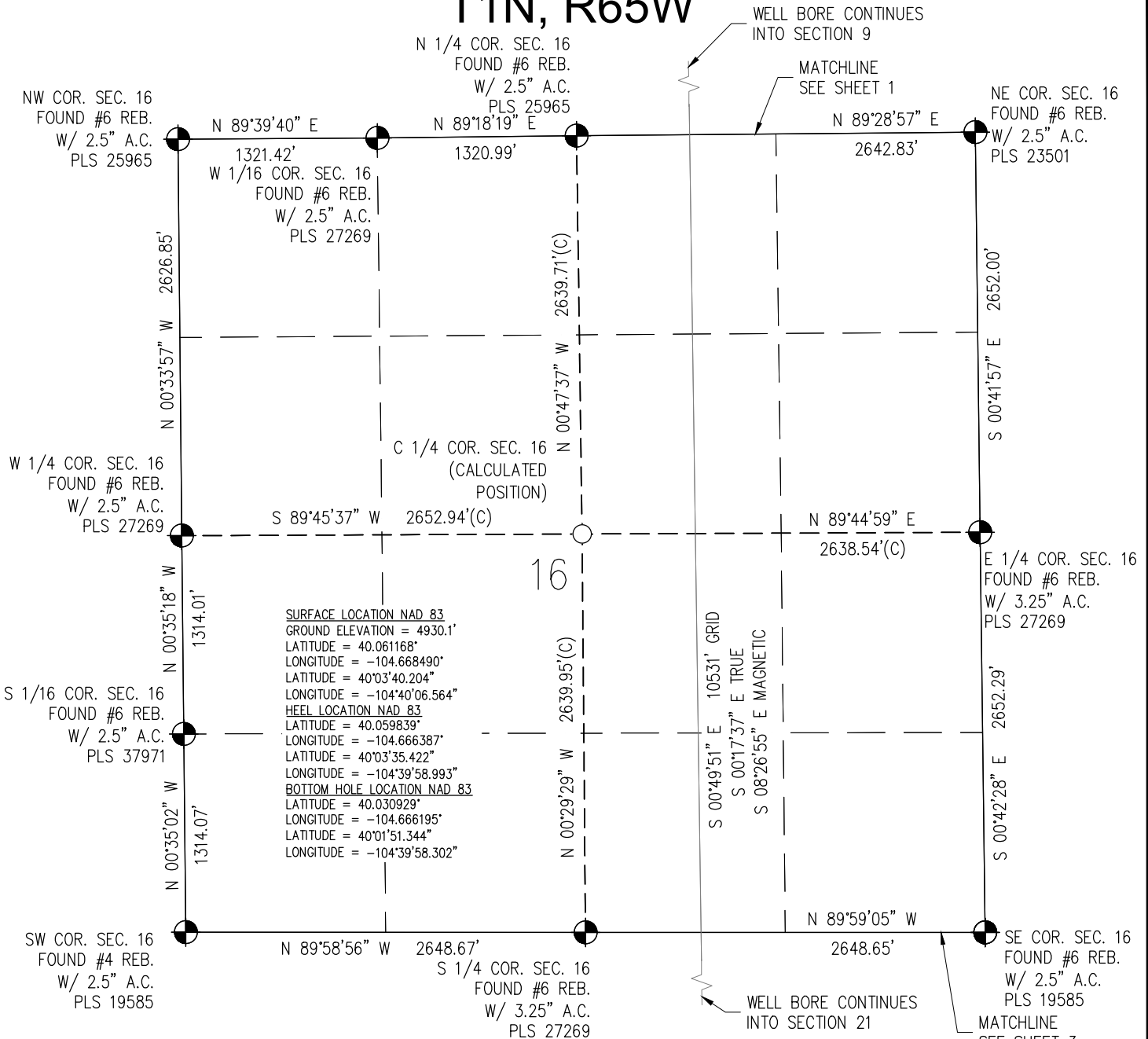
Kerr-McGee Oil & Gas Onshore L.P.
1099 18th Street
Denver, Colorado 80202

DRAWN BY JMH	CHECKED BY AAD
INITIAL SUBMITTAL 3/31/2017	
REVISED 4/18/2017	
DRAWING SIZE 8.5" X 11"	
JOB NO. ANAO1NG5W09-02	
SHEET 1 OF 3	

BASELINE
Engineering - Planning - Surveying
4007 S. LINCOLN AVENUE, SUITE 405 - LOVELAND, COLORADO 80537
P: 970.353.7800 - F: 970.353.7801 - www.baselinescorp.com

C:_co - Well Head Staking\ANAO1NG5W09-02(Robin)\ANAO1NG5W09-6HZ.PAD Well Cert.dwg, 4/18/2017 11:06:22 AM, Joyme Hobin

T1N, R65W

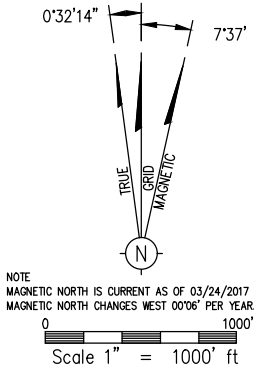


SURFACE LOCATION NAD 83
 GROUND ELEVATION = 4930.1'
 LATITUDE = 40.061168°
 LONGITUDE = -104.668490°
HEEL LOCATION NAD 83
 LATITUDE = 40.03'40.204°
 LONGITUDE = -104.40'06.564°
BOTTOM HOLE LOCATION NAD 83
 LATITUDE = 40.030929°
 LONGITUDE = -104.666195°
 LATITUDE = 40°01'51.344°
 LONGITUDE = -104°39'58.302°

I HEREBY CERTIFY THAT THIS WELL LOCATION CERTIFICATE WAS PREPARED BY ME, OR UNDER MY DIRECT SUPERVISION, THAT THE FIELD WORK WAS COMPLETED ON 3/22/2017, THAT THIS IS NOT A LAND SURVEY PLAT OR AN IMPROVEMENT SURVEY PLAT, AND THAT IT IS NOT TO BE RELIED UPON FOR ESTABLISHMENT OF FENCE, BUILDING, OR OTHER FUTURE IMPROVEMENT LINES.



AARON A. DEMO
 Professional Land Surveyor Registration No. 38285
 State of Colorado
 FOR AND ON BEHALF OF BASELINE ENGINEERING CORP.



- NOTES:**
- INDICATES SECTION CORNER
 - INDICATES CALCULATED CORNER
 - (C) INDICATES CALCULATED DIMENSION
 - ELEVATION BASED ON NAVD88 (GEOID12B)
 - BASIS OF BEARING DERIVED FROM COLORADO COORDINATE SYSTEM OF 1983 NORTH ZONE.
 - ALL MEASURED DISTANCES ARE GRID. COMBINED SCALE FACTOR 0.99972702 CALCULATED FROM THE SE CORNER OF SECTION 9, T1N, R65W
 - OPERATOR: JEFF VANHORN / PDOP = 1.5
 - SEE ADDENDUM TO WELL LOCATION CERTIFICATE FOR EXISTING IMPROVEMENTS WITHIN 500' OF THE WELL PAD.
 - WELL FOOTAGES ARE MEASURED AT RIGHT ANGLES TO THE SECTION LINES.
 - THE BOTTOM OF HOLE BEARS S00°49'51"E 10531' FROM THE HEEL LOCATION

NOTICE
 ACCORDING TO COLORADO STATE LAW YOU MUST COMMENCE ANY LEGAL ACTION BASED UPON ANY DEFECT IN THIS SURVEY WITHIN THREE YEARS AFTER YOU FIRST DISCOVER SUCH DEFECT. IN NO EVENT MAY ANY ACTION BASED UPON ANY DEFECT IN THIS SURVEY BE COMMENCED MORE THAN TEN YEARS FROM THE DATE ON THE CERTIFICATION SHOWN HERON.

WELL PAD - ROBIN 9-6HZ
 ROBIN 9-12HZ
 WELL LOCATION CERTIFICATE
 884' FSL & 2493' FEL SWSE (SURFACE)
 400' FSL & 1900' FEL SWSE (HEEL)
 LOCATED IN SECTION 9
 T1N, R65W, 6TH P.M.
 WELD COUNTY, COLORADO
 468' FSL & 1850' FEL SWSE (BOTTOM)
 LOCATED IN SECTION 21
 T1N, R65W, 6TH P.M.
 WELD COUNTY, COLORADO

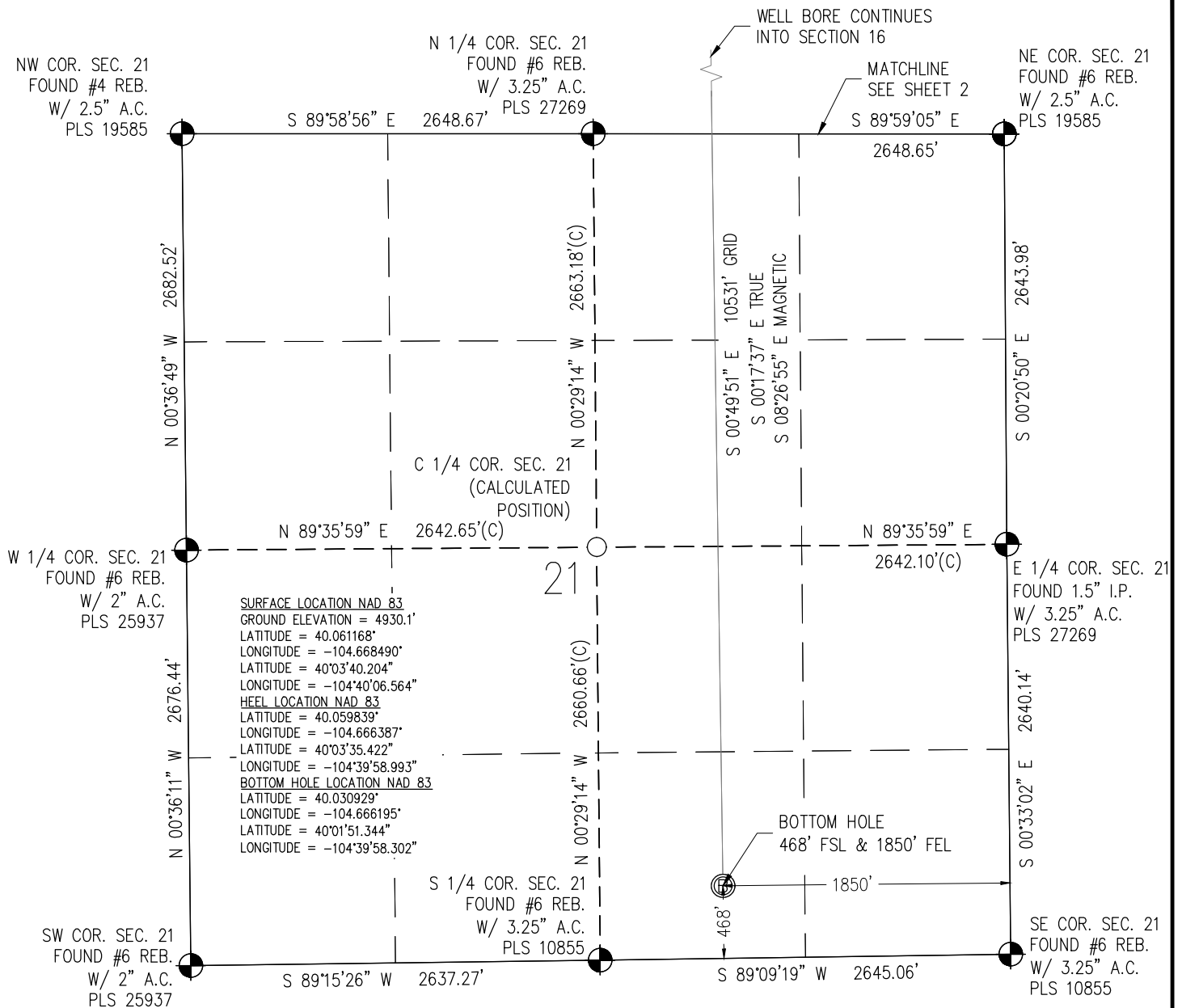
Kerr-McGee Oil & Gas Onshore L.P.
 1099 18th Street
 Denver, Colorado 80202

DRAWN BY	CHECKED BY
JMH	AAD
INITIAL SUBMITTAL	3/31/2017
REVISED	4/18/2017
DRAWING SIZE	8.5" X 11"
JOB NO.	ANAO1NG5W09-02
SHEET	2 of 3

BASELINE
 Engineering - Planning - Surveying
 4007 S. LINCOLN AVENUE, SUITE 405 - LOVELAND, COLORADO 80537
 P: 970.353.7800 - F: 970.353.7801 - www.baselinescorp.com

M:_co - Well Head Staking\ANAO1NG5W09-02(Robin)\ANAO1NG5W09-02(Robin)_9-6HZ.PAD Well Cert.dwg, 4/18/2017 11:06:32 AM, Joyme Hobin

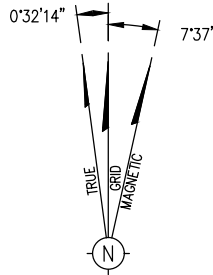
T1N, R65W



I HEREBY CERTIFY THAT THIS WELL LOCATION CERTIFICATE WAS PREPARED BY ME, OR UNDER MY DIRECT SUPERVISION, THAT THE FIELD WORK WAS COMPLETED ON 3/22/2017, THAT THIS IS NOT A LAND SURVEY PLAT OR AN IMPROVEMENT SURVEY PLAT, AND THAT IT IS NOT TO BE RELIED UPON FOR ESTABLISHMENT OF FENCE, BUILDING, OR OTHER FUTURE IMPROVEMENT LINES.

AARON A. DEMO
 Professional Land Surveyor Registration No. 38285
 State of Colorado
 FOR AND ON BEHALF OF BASELINE ENGINEERING CORP.

NOTICE
 ACCORDING TO COLORADO STATE LAW YOU MUST COMMENCE ANY LEGAL ACTION BASED UPON ANY DEFECT IN THIS SURVEY WITHIN THREE YEARS AFTER YOU FIRST DISCOVER SUCH DEFECT. IN NO EVENT MAY ANY ACTION BASED UPON ANY DEFECT IN THIS SURVEY BE COMMENCED MORE THAN TEN YEARS FROM THE DATE ON THE CERTIFICATION SHOWN HEREON.



NOTES:

- INDICATES SECTION CORNER
- INDICATES CALCULATED CORNER
- (C) INDICATES CALCULATED DIMENSION
- ELEVATION BASED ON NAVD88 (GEOID12B)
- BASIS OF BEARING DERIVED FROM COLORADO COORDINATE SYSTEM OF 1983 NORTH ZONE.
- ALL MEASURED DISTANCES ARE GRID. COMBINED SCALE FACTOR 0.99972702 CALCULATED FROM THE SE CORNER OF SECTION 9, T1N, R65W
- OPERATOR: JEFF VANHORN / PDOP = 1.5
- SEE ADDENDUM TO WELL LOCATION CERTIFICATE FOR EXISTING IMPROVEMENTS WITHIN 500' OF THE WELL PAD.
- WELL FOOTAGES ARE MEASURED AT RIGHT ANGLES TO THE SECTION LINES.
- THE BOTTOM OF HOLE BEARS S00°49'51"E 10531' FROM THE HEEL LOCATION

WELL PAD - ROBIN 9-6HZ
 ROBIN 9-12HZ
 WELL LOCATION CERTIFICATE
 884' FSL & 2493' FEL SWSE (SURFACE)
 400' FSL & 1900' FEL SWSE (HEEL)
 LOCATED IN SECTION 9
 T1N, R65W, 6TH P.M.
 WELD COUNTY, COLORADO
 468' FSL & 1850' FEL SWSE (BOTTOM)
 LOCATED IN SECTION 21
 T1N, R65W, 6TH P.M.
 WELD COUNTY, COLORADO

**Kerr-McGee Oil &
 Gas Onshore L.P.**
 1099 18th Street
 Denver, Colorado 80202

DRAWN BY JMH	CHECKED BY AAD
INITIAL SUBMITTAL 3/31/2017	
REVISED 4/18/2017	
DRAWING SIZE 8.5" X 11"	
JOB NO. ANAO1NG5W09-02	
SHEET 3 of 3	

BASELINE
 Engineering - Planning - Surveying
 4007 S. LINCOLN AVENUE, SUITE 405 - LOVELAND, COLORADO 80537
 P: 970.353.7800 - F: 970.353.7801 - www.baselinincorp.com

M:_co - Well Head Staking\ANAO1NG5W09-02(Robin)\ANAO1NG5W09-02(Robin)_9-6HZ.PAD Well Cert.dwg, 4/18/2017 11:06:42 AM, Joyme Hobin