

# T1N, R65W

NW COR. SEC. 9  
FOUND #6 REB.  
W/ 2.5" A.C.  
PLS 25965

NE COR. SEC.9  
FOUND #6 REB.  
W/ 2.5" A.C.  
PLS 25965

N 89°34'03" E 2657.95'

N 89°33'38" E 2657.92'

N 1/4 COR. SEC. 9  
FOUND #6 REB.  
W/ 2.5" A.C.  
PLS 25965

SURFACE LOCATION NAD 83  
GROUND ELEVATION = 4929.4'  
LATITUDE = 40.061169°  
LONGITUDE = -104.668812°  
LATITUDE = 40°03'40.210"  
LONGITUDE = -104°40'07.721"  
HEEL LOCATION NAD 83  
LATITUDE = 40.059837°  
LONGITUDE = -104.670385°  
LATITUDE = 40°03'35.414"  
LONGITUDE = -104°40'13.385"  
BOTTOM HOLE LOCATION NAD 83  
LATITUDE = 40.030916°  
LONGITUDE = -104.670360°  
LATITUDE = 40°01'51.298"  
LONGITUDE = -104°40'13.296"

N 00°23'17" W 2635.58'

N 00°10'11" W 2643.97'

S 00°00'10" W 2652.86'

W 1/4 COR. SEC. 9  
FOUND #6 REB.  
W/ 3.25" A.C.  
PLS 22098

N 89°44'55" E 2647.88'

N 89°45'06" E 2649.91'

C 1/4 COR. SEC. 9  
FOUND #6 REB.  
W/ 2.5" A.C.  
PLS 25965

E 1/4 COR. SEC. 9  
FOUND #6 REB.  
W/ 2.5" A.C.  
PLS 25965

N 00°16'59" W 2677.18'

N 00°09'52" W 2664.95'

S 00°00'37" E 2652.55'

SW COR. SEC. 9  
FOUND #6 REB.  
W/ 2.5" A.C.  
PLS 25965

W 1/16 COR. SEC. 9  
FOUND #6 REB.  
W/ 2.5" A.C.  
PLS 27269

ROBIN 9-8HZ  
SURFACE LOCATION

WELL BORE CONTINUES  
INTO SECTION 16

S 1/4 COR. SEC. 9  
FOUND #6 REB.  
W/ 2.5" A.C.  
PLS 25965

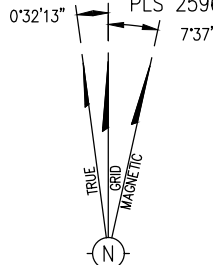
MATCHLINE  
SEE SHEET 2

SE COR. SEC. 9  
FOUND #6 REB.  
W/ 2.5" A.C.  
PLS 23501

I HEREBY CERTIFY THAT THIS WELL LOCATION CERTIFICATE WAS PREPARED BY ME, OR UNDER MY DIRECT SUPERVISION, THAT THE FIELD WORK WAS COMPLETED ON 3/22/2017, THAT THIS IS NOT A LAND SURVEY PLAT OR AN IMPROVEMENT SURVEY PLAT, AND THAT IT IS NOT TO BE RELIED UPON FOR ESTABLISHMENT OF FENCE, BUILDING, OR OTHER FUTURE IMPROVEMENT LINES.

AARON A. DEMO  
Professional Land Surveyor Registration No. 38285  
State of Colorado  
FOR AND ON BEHALF OF BASELINE ENGINEERING CORP.

NOTICE  
ACCORDING TO COLORADO STATE LAW YOU MUST COMMENCE ANY LEGAL ACTION BASED UPON ANY DEFECT IN THIS SURVEY WITHIN THREE YEARS AFTER YOU FIRST DISCOVER SUCH DEFECT. IN NO EVENT MAY ANY ACTION BASED UPON ANY DEFECT IN THIS SURVEY BE COMMENCED MORE THAN TEN YEARS FROM THE DATE ON THE CERTIFICATION SHOWN HEREON.



NOTE  
MAGNETIC NORTH IS CURRENT AS OF 03/24/2017  
MAGNETIC NORTH CHANGES WEST 00'06" PER YEAR.  
Scale 1" = 1000' ft

## NOTES:

1. INDICATES SECTION CORNER
2. INDICATES CALCULATED CORNER
3. (C) INDICATES CALCULATED DIMENSION
4. ELEVATION BASED ON NAVD88 (GEOID12B)
5. BASIS OF BEARING DERIVED FROM COLORADO COORDINATE SYSTEM OF 1983 NORTH ZONE.
6. ALL MEASURED DISTANCES ARE GRID. COMBINED SCALE FACTOR 0.99972702 CALCULATED FROM THE SE CORNER OF SECTION 9, T1N, R65W
7. OPERATOR: JEFF VANHORN / PDOP = 1.5
8. SEE ADDENDUM TO WELL LOCATION CERTIFICATE FOR EXISTING IMPROVEMENTS WITHIN 500' OF THE WELL PAD.
9. WELL FOOTAGES ARE MEASURED AT RIGHT ANGLES TO THE SECTION LINES.
10. THE BOTTOM OF HOLE BEARS S00°34'25"E 10535' FROM THE HEEL LOCATION

## WELL PAD - ROBIN 9-6HZ

ROBIN 9-6HZ  
WELL LOCATION CERTIFICATE  
884' FSL & 2583' FSL SWSE (SURFACE)  
400' FSL & 2268' FSL SEW (HEEL)  
LOCATED IN SECTION 9  
T1N, R65W, 6TH P.M.  
WELD COUNTY, COLORADO  
468' FSL & 2267' FSL SEW (BOTTOM)  
LOCATED IN SECTION 21  
T1N, R65W, 6TH P.M.  
WELD COUNTY, COLORADO

**Kerr-McGee Oil &  
Gas Onshore L.P.**

1099 18th Street  
Denver, Colorado 80202

DRAWN BY  
JMH

CHECKED BY  
AAD

INITIAL SUBMITTAL 3/31/2017

REVISED 4/18/2017

DRAWING SIZE 8.5" X 11"

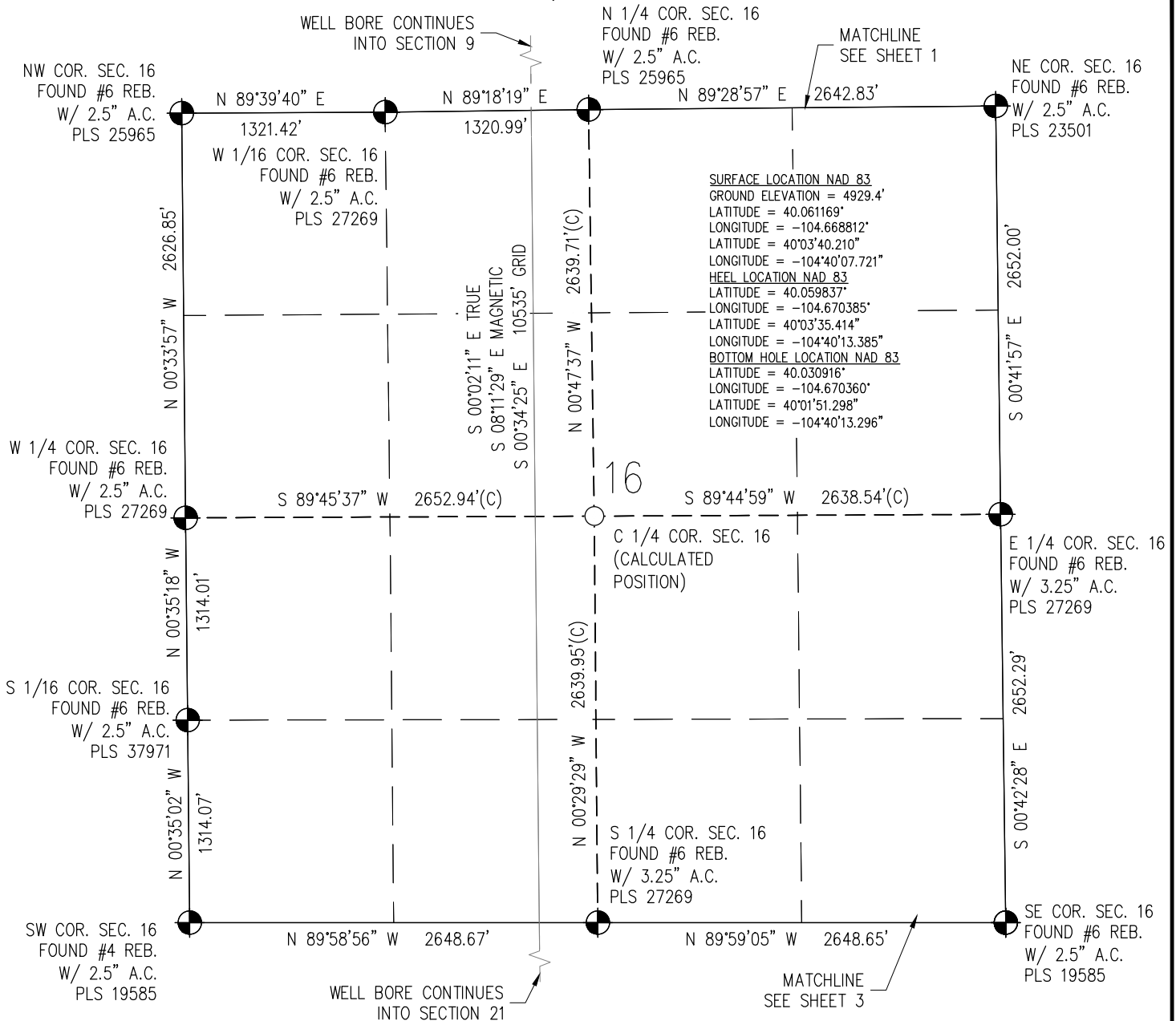
JOB NO. ANA01N65W09-02

SHEET 1 OF 3

**BASELINE**  
Engineering - Planning - Surveying

4007 S. LINCOLN AVENUE, SUITE 405 - LOVELAND, COLORADO 80537  
P: 970.353.7800 - F: 970.353.7801 - www.baselinescorp.com

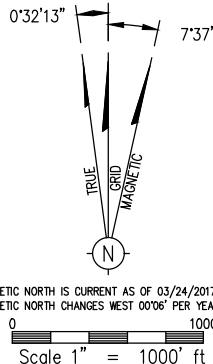
# T1N, R65W



I HEREBY CERTIFY THAT THIS WELL LOCATION CERTIFICATE WAS PREPARED BY ME, OR UNDER MY DIRECT SUPERVISION, THAT THE FIELD WORK WAS COMPLETED ON 3/22/2017, THAT THIS IS NOT A LAND SURVEY PLAT OR AN IMPROVEMENT SURVEY PLAT, AND THAT IT IS NOT TO BE RELIED UPON FOR ESTABLISHMENT OF FENCE, BUILDING, OR OTHER FUTURE IMPROVEMENT LINES.

AARON A. DEMO  
Professional Land Surveyor Registration No. 38285  
State of Colorado  
FOR AND ON BEHALF OF BASELINE ENGINEERING CORP.

NOTICE  
ACCORDING TO COLORADO STATE LAW YOU MUST COMMENCE ANY LEGAL ACTION BASED UPON ANY DEFECT IN THIS SURVEY WITHIN THREE YEARS AFTER YOU FIRST DISCOVER SUCH DEFECT. IN NO EVENT MAY ANY ACTION BASED UPON ANY DEFECT IN THIS SURVEY BE COMMENCED MORE THAN TEN YEARS FROM THE DATE ON THE CERTIFICATION SHOWN HEREON.



## NOTES:

1. ● INDICATES SECTION CORNER
2. ○ INDICATES CALCULATED CORNER
3. (C) INDICATES CALCULATED DIMENSION
4. ELEVATION BASED ON NAVD88 (GEOID12B)
5. BASIS OF BEARING DERIVED FROM COLORADO COORDINATE SYSTEM OF 1983 NORTH ZONE.
6. ALL MEASURED DISTANCES ARE GRID. COMBINED SCALE FACTOR 0.99972702 CALCULATED FROM THE SE CORNER OF SECTION 9, T1N, R65W
7. OPERATOR: JEFF VANHORN / PDOP = 1.5
8. SEE ADDENDUM TO WELL LOCATION CERTIFICATE FOR EXISTING IMPROVEMENTS WITHIN 500' OF THE WELL PAD.
9. WELL FOOTAGES ARE MEASURED AT RIGHT ANGLES TO THE SECTION LINES.
10. THE BOTTOM OF HOLE BEARS S00°34'25"E 10535' FROM THE HEEL LOCATION

## WELL PAD - ROBIN 9-6HZ

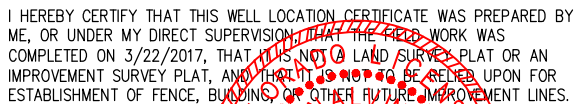
ROBIN 9-6HZ  
WELL LOCATION CERTIFICATE  
884' FSL & 2583' FSL SWSE (SURFACE)  
400' FSL & 2268' FSL SEW (HEEL)  
LOCATED IN SECTION 9  
T1N, R65W, 6TH P.M.  
WELD COUNTY, COLORADO  
468' FSL & 2267' FSL SEW (BOTTOM)  
LOCATED IN SECTION 21  
T1N, R65W, 6TH P.M.  
WELD COUNTY, COLORADO

**Kerr-McGee Oil &  
Gas Onshore L.P.**  
1099 18th Street  
Denver, Colorado 80202

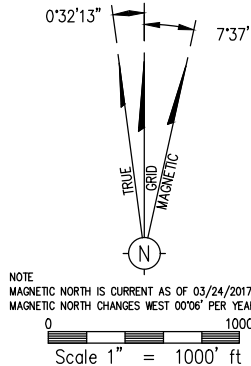
DRAWN BY	JMH	CHECKED BY	AAD
INITIAL SUBMITTAL	3/31/2017		
REVISED	4/18/2017		
DRAWING SIZE	8.5" X 11"		
JOB NO.	ANA01NG5W09-02		
SHEET	2 OF 3		


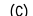
**BASELINE**  
Engineering - Planning - Surveying  
4007 S. LINCOLN AVENUE, SUITE 405 - LOVELAND, COLORADO 80537  
P: 970.353.7800 - F: 970.353.7801 - www.baselinecorp.com

M:\co - Well Head Staking\ANA01N65W09-02(Robin)\ANA01N65W09-02(Robin) 9-6HZ PAD Well Cert.dwg, 4/18/2017 11:04:42 AM, Jayme Hobin



NOTICE  
ACCORDING TO COLORADO STATE LAW YOU MUST COMMENCE ANY LEGAL ACTION BASED  
UPON ANY DEFECT IN THIS SURVEY WITHIN THREE YEARS AFTER YOU FIRST DISCOVER SUCH  
DEFECT. IN NO EVENT MAY ANY ACTION BASED UPON ANY DEFECT IN THIS SURVEY BE  
COMMENCED MORE THAN TEN YEARS FROM THE DATE ON THE CERTIFICATION SHOWN HEREON.



1.  INDICATES SECTION CORNER
2.  INDICATES CALCULATED CORNER
3. (C) INDICATES CALCULATED DIMENSION
4. ELEVATION BASED ON NAVD88 (GEOID12B)
5. BASIS OF BEARING DERIVED FROM COLORADO COORDINATE SYSTEM OF 1983 NORTH ZONE.
6. ALL MEASURED DISTANCES ARE GRID. COMBINED SCALE FACTOR 0.99972702 CALCULATED FROM THE SE CORNER OF SECTION 9, T1N, R65W
7. OPERATOR: JEFF VANHORN / PDOP = 1.5
8. SEE ADDENDUM TO WELL LOCATION CERTIFICATE FOR EXISTING IMPROVEMENTS WITHIN 500' OF THE WELL PAD.
9. WELL FOOTAGES ARE MEASURED AT RIGHT ANGLES TO THE SECTION LINES.
10. THE BOTTOM OF HOLE BEARS S00°34'25"E 10535' FROM THE HEEL LOCATION

ROBIN 9-8HZ  
WELL LOCATION CERTIFICATE  
884' FSL & 2583' FEL SWSE (SURFACE)  
400' FSL & 2268' FWL SESEW (HEEL)  
LOCATED IN SECTION 9  
T1N, R65W, 6TH P.M.  
WELD COUNTY, COLORADO  
468' FSL & 2267' FWL SESEW (BOTTOM)  
LOCATED IN SECTION 21  
T1N, R65W, 6TH P.M.  
WELD COUNTY, COLORADO

DRAWN BY JMH	CHECKED BY AAD
INITIAL SUBMITTAL	3/31/2017
REVISED	4/18/2017
DRAWING SIZE	8.5" X 11"
JOB NO.	ANA01N65W09-02
SHEET 3 OF 3	



**BASELINE**  
Engineering - Planning - Surveying  
4007 S. LINCOLN AVENUE, SUITE 405 • LOVELAND, COLORADO 80537  
P. 970.353.7600 • F. 970.353.7601 • [www.baselinecorp.com](http://www.baselinecorp.com)