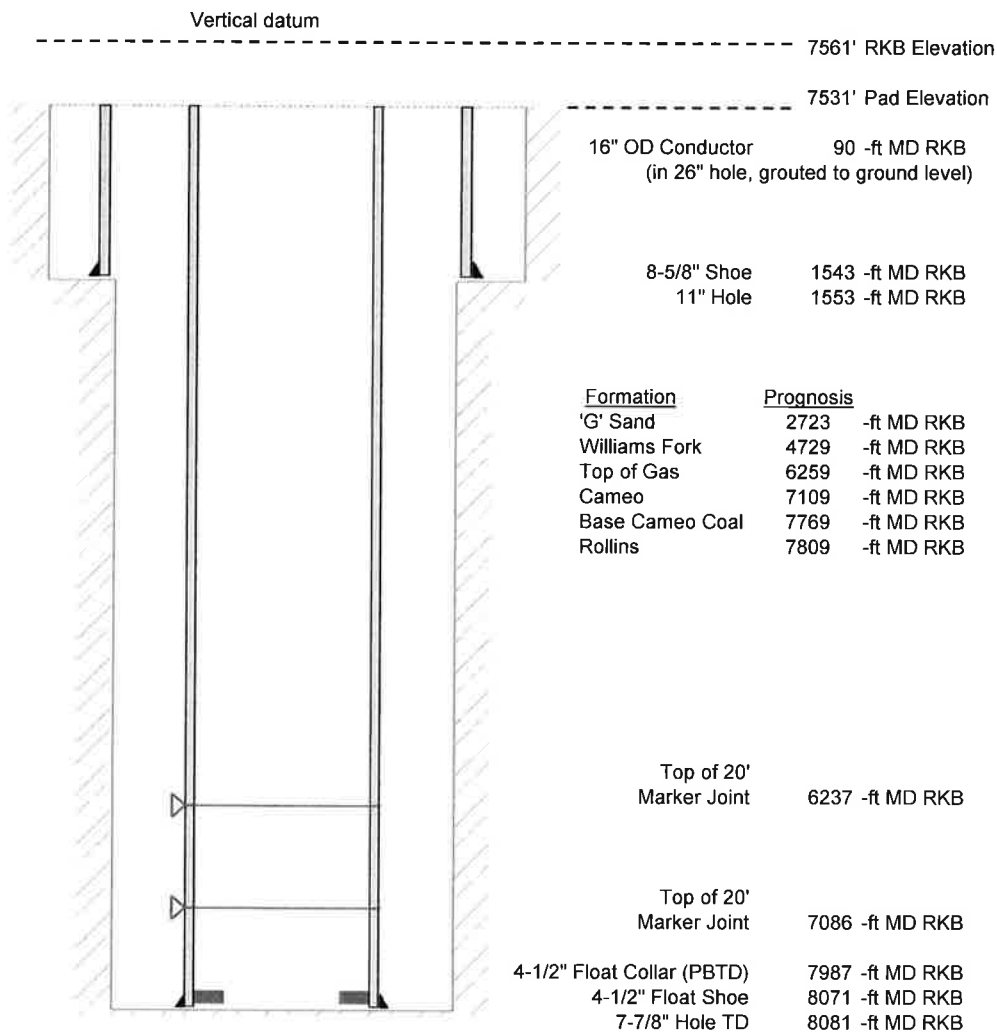


Laramie Energy, LLC  
Piceance Federal 29-19E  
Slot D3  
H&P 522 (30-ft KB)

API #: 05-077-10359  
SE/4 NE/4 S29/T9S/R93W/6th PM  
Mesa County, CO  
Date of diagram: 5/6/2017



#### Cementing details

8-5/8" 24# J55 STC Surface Csg	Lead	Tail
Density (ppg)	12.3	12.8
Volume (sx)	197	109
Yield (cf/sx)	2.45	2.18
Top (ft RKB)	30	1030
Bottom (ft RKB)	1030	1543
Returns (full or partial)	Full	Full

4-1/2" 11.6# Nexteel-80 LTC Prod Csg	Lead	Tail
Density (ppg)	12.5	13.3
Volume (sx)	883	410
Yield (cf/sx)	1.94	1.73
Est Top (ft RKB)	1030	6059
Est Bottom (ft RKB)	6059	8071
Returns (full or partial)	Full	Full

Displacement
8.3 ppg
124.3 bbls

Other Remarks: Surface cement: 35 bbls of cmt to surface. Production cement: 35 bbls of spacer to surface.