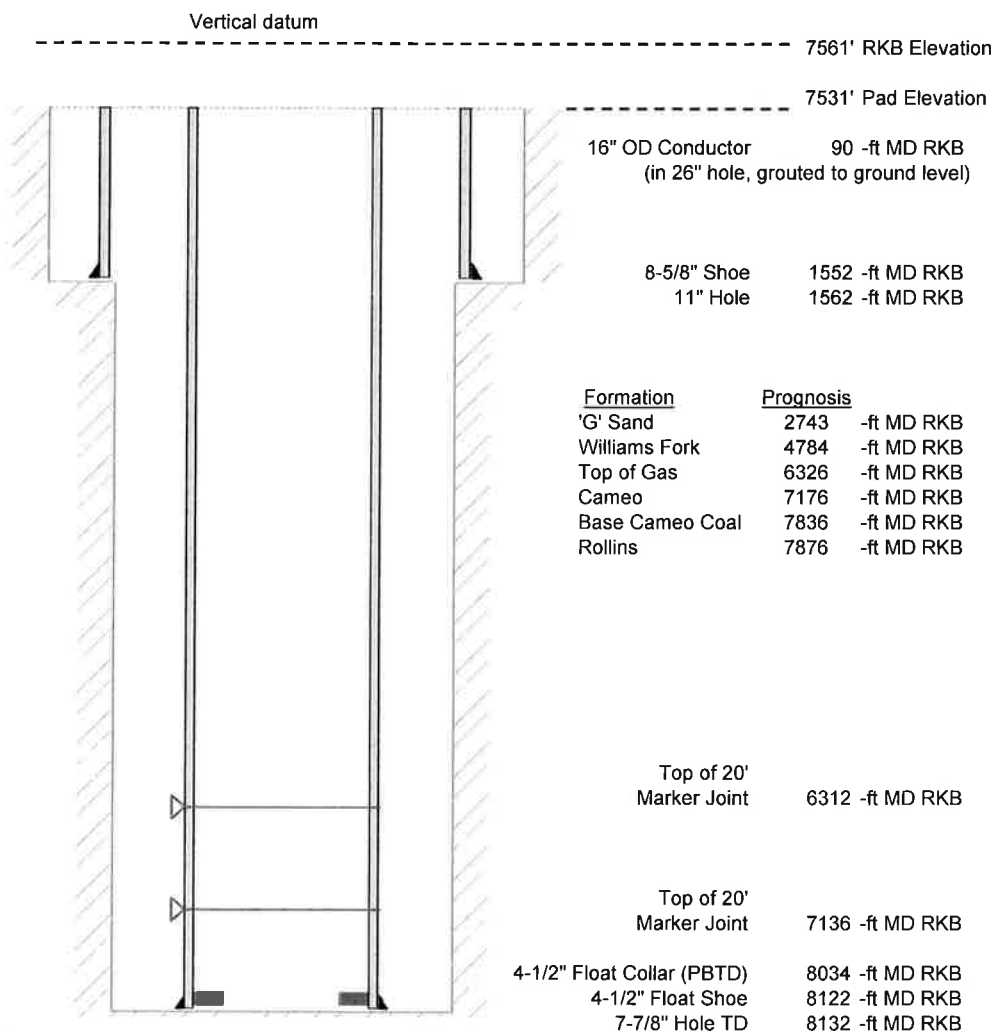


Laramie Energy, LLC
Piceance Federal 29-20E
Slot C2
H&P 522 (30-ft KB)

API #: 05-077-10363
SE/4 NE/4 S29/T9S/R93W/6th PM
Mesa County, CO
Date of diagram : 5/1/2017



Cementing details

8-5/8" 24# J55 STC Surface Csg	Lead	Tail
Density (ppg)	12.3	12.8
Volume (sx)	197	109
Yield (cf/sx)	2.45	2.18
Top (ft RKB)	30	1030
Bottom (ft RKB)	1030	1552
Returns (full or partial)	Full	Full

4-1/2" 11.6# Nexteel-80 LTC Prod Csg	Lead	Tail
Density (ppg)	12.5	13.3
Volume (sx)	896	410
Yield (cf/sx)	1.94	1.73
Est Top (ft RKB)	1030	6126
Est Bottom (ft RKB)	6126	8122
Returns (full or partial)	Full	Full

Displacement
8.3 ppg
126 bbls

Other Remarks : Surface - 36 BBLS cmt to surface / Production - 35 bbls spacer to surface