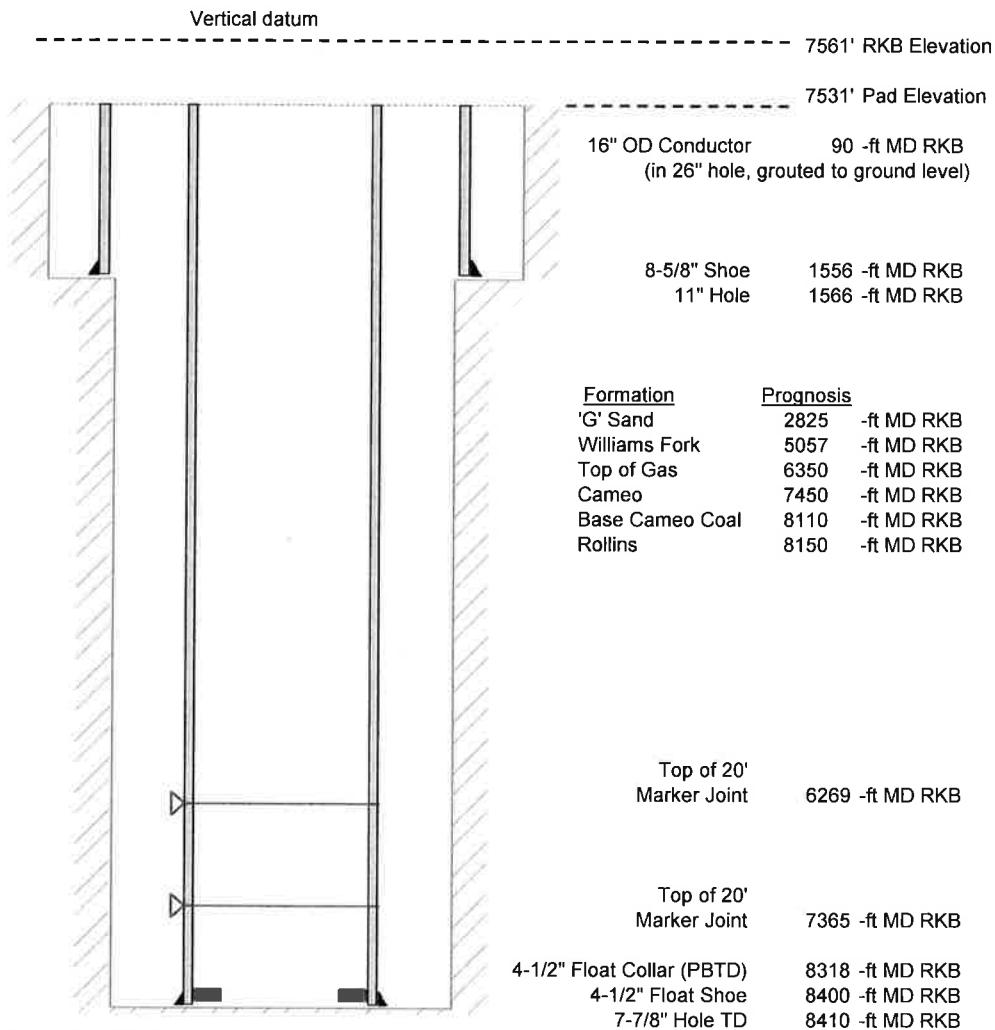


Laramie Energy, LLC
Piceance Federal 29-22E
Slot D2
H&P 522 (30-ft KB)

API #: 05-077-10361
SE/4 NE/4 S29/T9S/R93W/6th PM
Mesa County, CO
Date of diagram: 4/20/2017



Cementing details

8-5/8" 24# J55 STC Surface Csg	Lead	Tail
Density (ppg)	12.3	12.8
Volume (sx)	197	109
Yield (cf/sx)	2.45	2.18
Top (ft RKB)	30	1030
Bottom (ft RKB)	1030	1556
Returns (full or partial)	Full	Full

4-1/2" 11.6# Nexteel-80 LTC Prod Csg	Lead	Tail
Density (ppg)	12.5	13.3
Volume (sx)	900	461
Yield (cf/sx)	1.94	1.73
Est Top (ft RKB)	1030	
Est Bottom (ft RKB)	6150	8400
Returns (full or partial)	Full	Full

Displacement
8.3 ppg
129 bbls

Other Remarks: Surface- 30 bbls cement to surface Production- 18
bbls spacer to surface